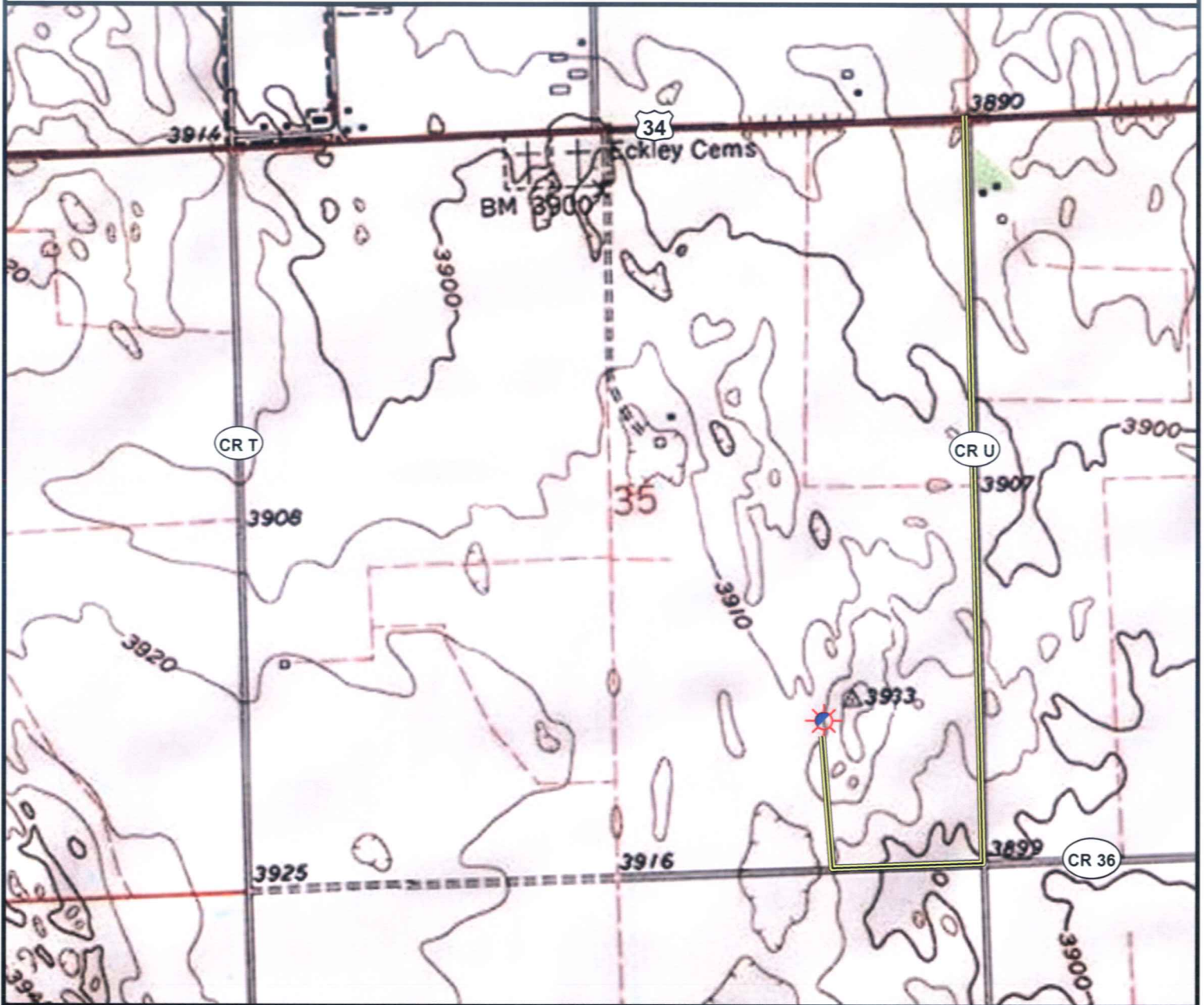


# Access Road Map



0 600 1,200 2,400 Feet

## Legend

- |  |                      |  |                       |
|--|----------------------|--|-----------------------|
|  | Proposed Well        |  | Building/Residence    |
|  | Existing Well        |  | Oil & Gas Equipment   |
|  | Water Well           |  | Water Body            |
|  | Pedestal             |  | Utility Box           |
|  | CattleGuard/Gate     |  | Railroad              |
|  | Bridge               |  | Fence                 |
|  | Disturbance Area     |  | Overhead Power Line   |
|  | 1000' Radius         |  | Pipeline              |
|  | Facilities Enclosure |  | Access Road           |
|  |                      |  | Intermittent Stream   |
|  |                      |  | Concrete Walled Ditch |

## Access Road Map

**GODSEY 44-35  
2N46W**

**Surface Location: T2N R46W S35**

Field Date: 3/29/2010  
Drawing Date: 3/31/2010  
Drafter: CGR  
Checked By: BHF

Topographic data courtesy of USGS

Prepared for:  
**AUGUSTUS ENERGY  
PARTNERS, LLC**  
P.O. Box 250  
Wray, CO 80758



Use our resources to find yours!  
[www.petro-fs.com](http://www.petro-fs.com)

1801 W. 13th Ave Suite 207  
Denver, CO 80204  
(303) 928-7128  
111 E. Third Street  
Rifle, CO 81650  
(970) 625-4740