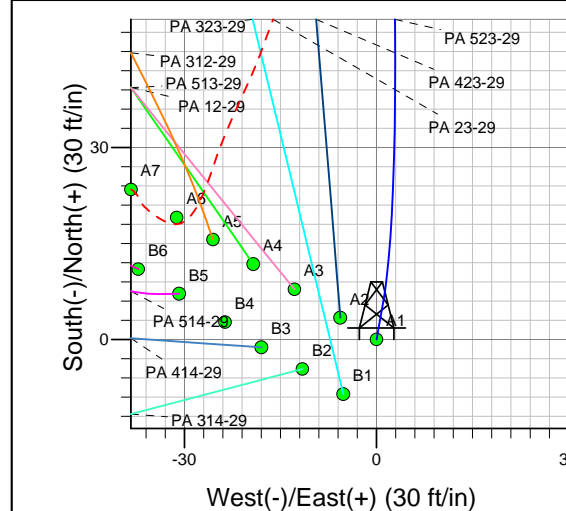
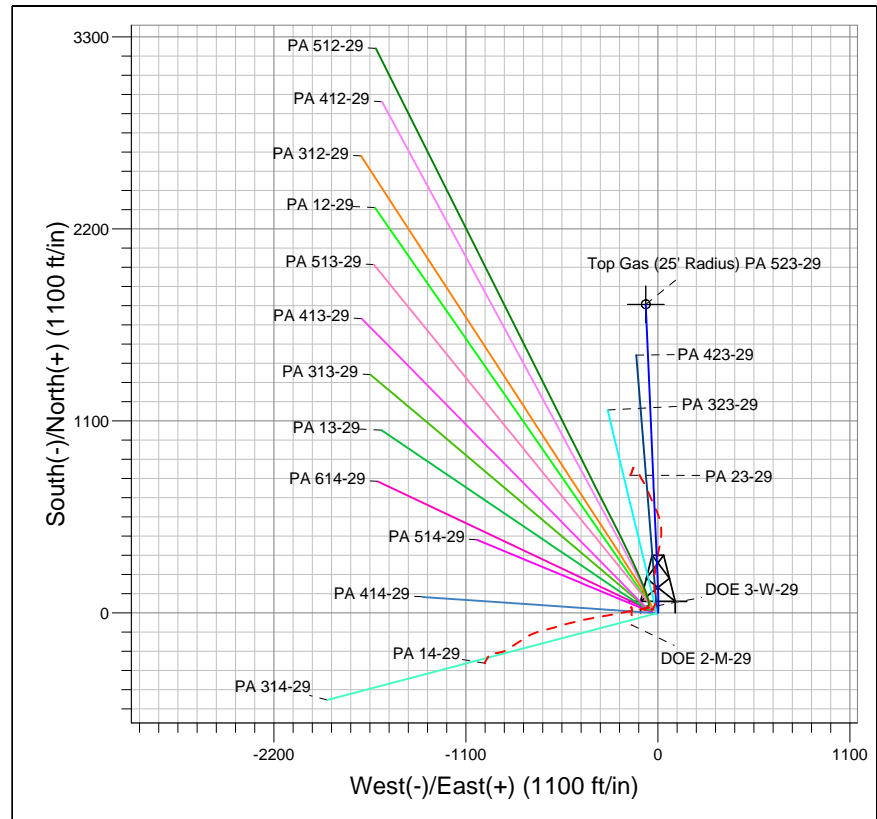
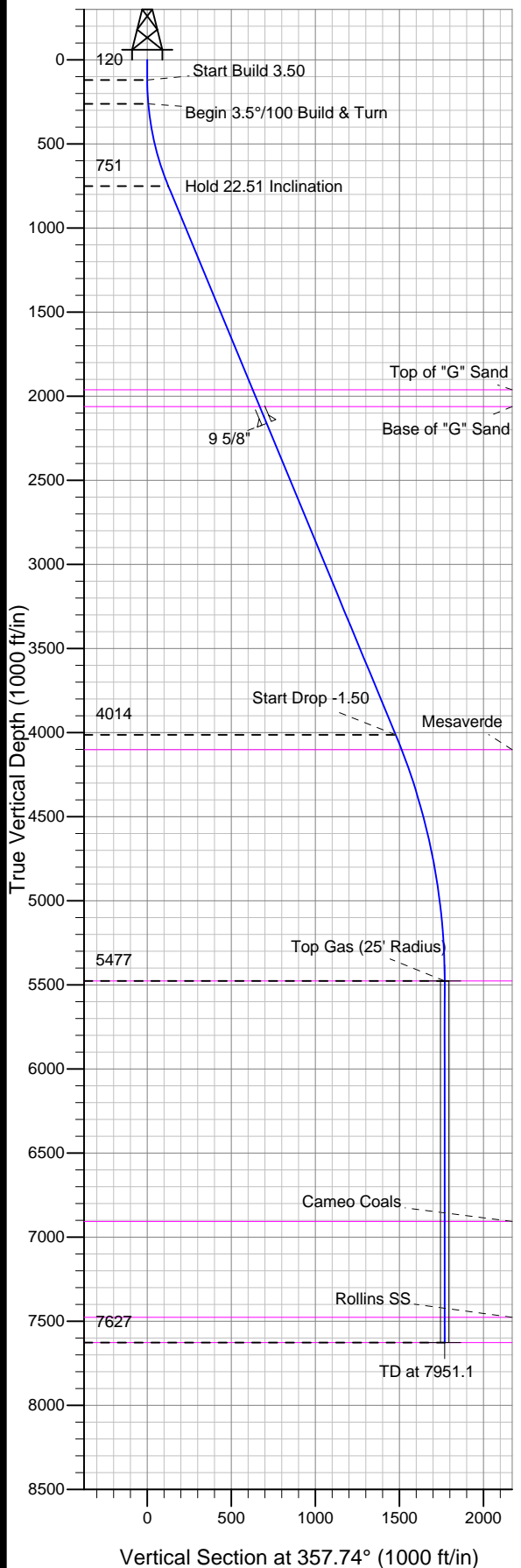




Well Name: PA 523-29
Surface Location: DOE 3-W-29 Pad
North American Datum 1983 , US State Plane 1983 , Colorado Central Zone
Ground Elevation: 5676.0
+N/-S +E/-W Northing Easting Latitude Longitude Slot
0.0 0.0 1613206.60 2288024.30 39° 29' 23.583 N 108° 1' 22.973 W A1
WELL @ 5702.0ft (Nabors 577 (26') kjs)



Project: PA 29-06S-095W
Site: DOE 3-W-29 Pad
Well: PA 523-29
Plan #1 05Feb09 kjs

Azimuths to True North
Magnetic North: 11.47°
Magnetic Field
Strength: 53090.0snT
Dip Angle: 65.98°
Date: 12/31/2004
Model: IGRF2000

SECTION DETAILS

Sec	MD	Inc	Azi	TVD	+N/-S	+E/-W	DLeg	TFace	VSec	Target
1	0.0	0.00	0.00	0.0	0.0	0.0	0.00	0.00	0.0	
2	120.0	0.00	0.00	120.0	0.0	0.0	0.00	0.00	0.0	
3	262.9	5.00	10.00	262.7	6.1	1.1	3.50	10.00	6.1	
4	767.5	22.51	357.54	751.0	125.3	0.8	3.50	-15.80	125.1	
5	4300.1	22.51	357.54	4014.4	1476.7	-57.2	0.00	0.00	1477.8	
6	5801.1	0.00	0.00	5477.0	1767.5	-69.7	1.50	180.00	1768.9	Top Gas (25' Radius) PA 523-29
7	7951.1	0.00	0.00	7627.0	1767.5	-69.7	0.00	0.00	1768.9	TD / PBHL PA 523-29

ANNOTATIONS

TVD	MD	Annotation
120.0	120.0	Start Build 3.50
262.7	262.9	Begin 3.5°/100 Build & Turn
751.0	767.5	Hold 22.51 Inclination
4014.4	4300.1	Start Drop -1.50
5477.0	5801.1	Top Gas
7627.0	7951.1	TD at 7951.1