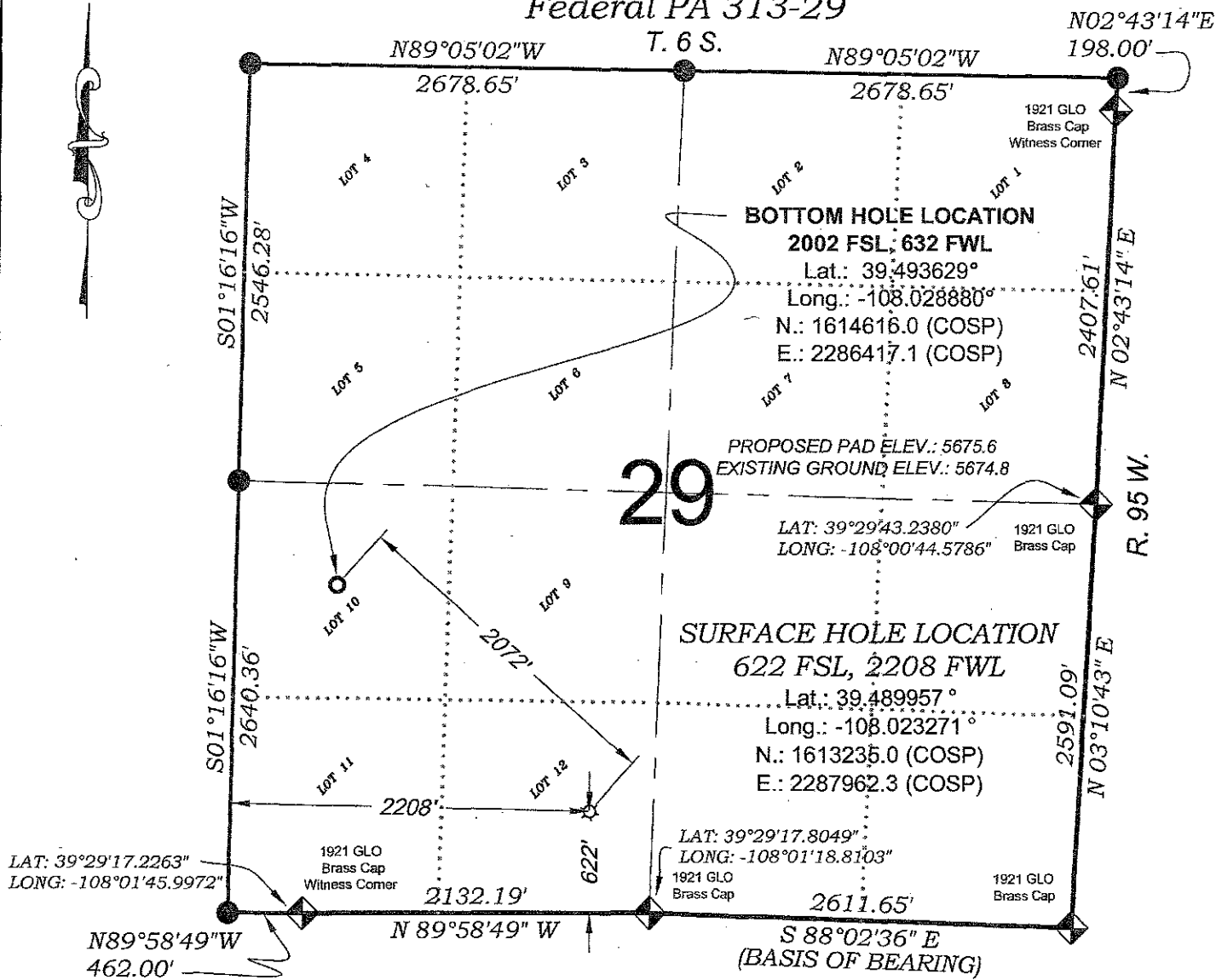


*Federal PA 313-29*



SEE CURRENT FOOTAGES SHEET  
FOR VISIBLE IMPROVEMENTS  
WITHIN 400' OF THIS LOCATION

### SURVEYORS STATEMENT

I, MICHAEL J. LANGHORNE, A REGISTERED LAND SURVEYOR IN THE STATE OF COLORADO DO HEREBY CERTIFY THAT THE SURVEY SHOWN HEREON WAS PREPARED UNDER MY DIRECT SUPERVISION AND HAS BEEN STAKED ON THE GROUND AS SHOWN ON THE PLAT AND CHECKING THAT THIS MAP IS A TRUE REPRESENTATION THEREOF.

MICHAEL J. LANGHORNE, COLORADO REGISTRATION NO. 36572  
FOR AND ON BEHALF OF LAND  
BOOKCLIFF SURVEY SERVICES, INC.

## REFERENCES

- 1) DEPENDENT RESURVEY T. 6 S., R. 95 W., 6 th P.M (GLO PLAT)  
2) U.S.G.S. OUAD: PARACHUTE. CO

136 East Third Street  
Ryle, Colorado 81650  
Ph. (970) 625-1330  
Fax (970) 625-2773

**BOOKCLIFF**  
*Survey Services, Inc.*

SURVEY DATE: 11/18/08  
MAP DATE: 4/14/09  
SCALE: 1" = 1000'  
SHEET: 1 of 9  
PROJECT: Williams

## NOTES

- 1) ELEVATIONS BASED ON N.A. V.D. 1988 PUBLISHED COORDINATES.
- 2) LATITUDES AND LONGITUDES ARE BASE ON NAD 83,  
PUBLISHED COORDINATES
- 3) STATE PLANE COORDINATES ARE BASED ON COLORADO  
CENTRAL ZONE, U.S. SURVEY FEET.
- 4) ELEVATION MASK SET TO 15°
- 5) GPS OPERATOR J. KIRKPATRICK, OBSERVED A PDOP OF LESS  
THAN 6.0
- 6) SURFACE AND BOTTOM HOLE LOCATIONS ARE MEASURED 90°  
FROM SECTION LINES.

**WELL LOCATION PLAT Prepared for:**

**Williams** Williams Production, RMT

SE1/4 SW1/4, SECTION 29  
T. 6 S., R. 95 W. of the 6th. P.M.  
GARFIELD COUNTY, COLORADO