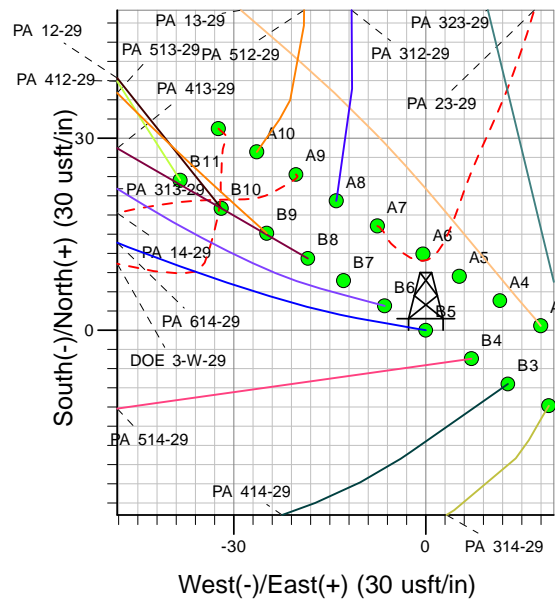
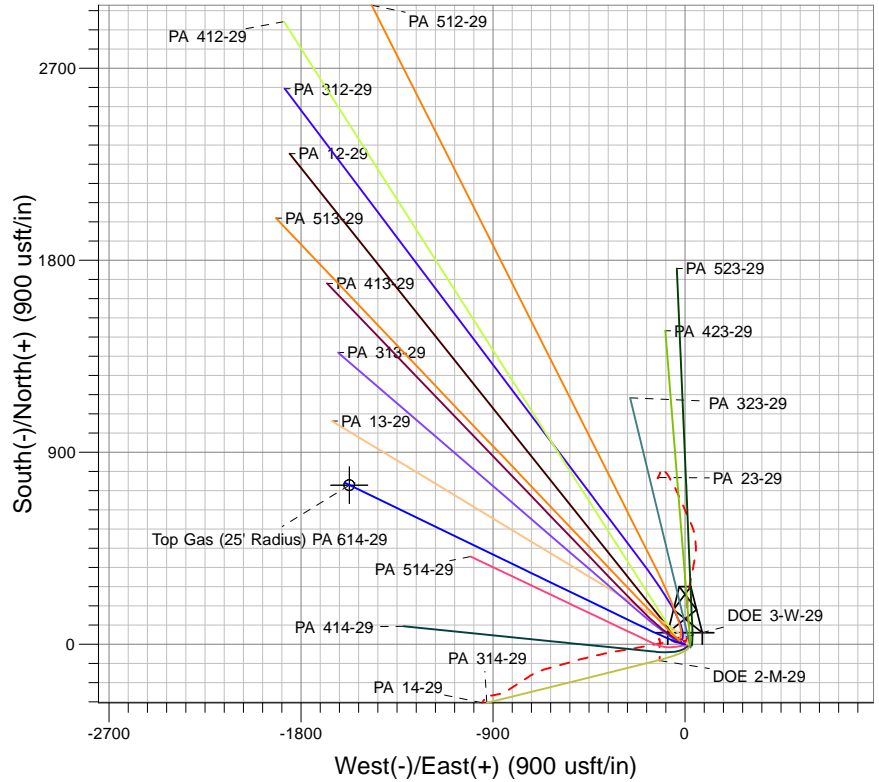
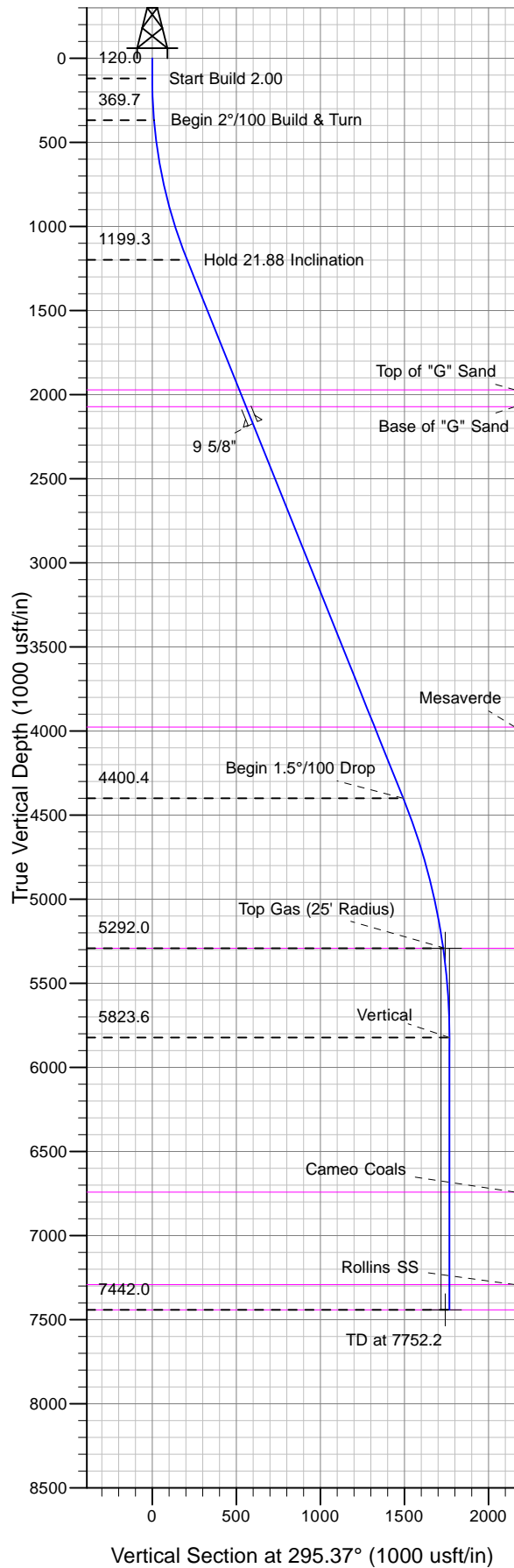




Well Name: PA 614-29
Surface Location: DOE 3-W-29 Pad
North American Datum 1983 , US State Plane 1983, Colorado Central Zone
Ground Elevation: 5676.0
+N/-S +E/-W Northing Easting Latitude Longitude Slot
0.0 0.0 1613214.60 2287993.70 39° 29' 23.654 N 108° 1' 23.366 W B5
WELL @ 5702.0usft (Nabors 577 (26') kjs)



Project: PA 29-06S-095W
Site: DOE 3-W-29 Pad
Well: PA 614-29
Plan #2 30mar10 kjs

M Azimuths to True North
Magnetic North: 10.66°
Magnetic Field
Strength: 52485.2snT
Dip Angle: 65.79°
Date: 2/5/2009
Model: IGRF2010

ANNOTATIONS

TVD	MD	Inc	Azi	+N/-S	+E/-W	V	Sect	Departure	Annotation
120.0	120.0	0.00	0.00	0.0	0.0	0.0	0.0	0.0	Start Build 2.00
369.7	370.0	5.00	280.00	1.9	-10.7	10.5	10.9	10.9	Begin 2°/100 Build & Turn
1199.3	1225.8	21.88	295.80	78.3	-192.4	207.4	209.1	209.1	Hold 21.88 Inclination
4400.4	4675.3	21.88	295.80	637.7	-1349.6	1492.6	1494.4	1494.4	Begin 1.5°/100 Drop
5292.0	5600.4	8.00	295.80	741.2	-1563.7	1730.5	1732.3	1732.3	Top Gas
5823.6	6133.8	0.00	0.00	757.4	-1597.2	1767.7	1769.4	1769.4	Vertical
7442.0	7752.2	0.00	0.00	757.4	-1597.2	1767.7	1769.4	1769.4	TD at 7752.2