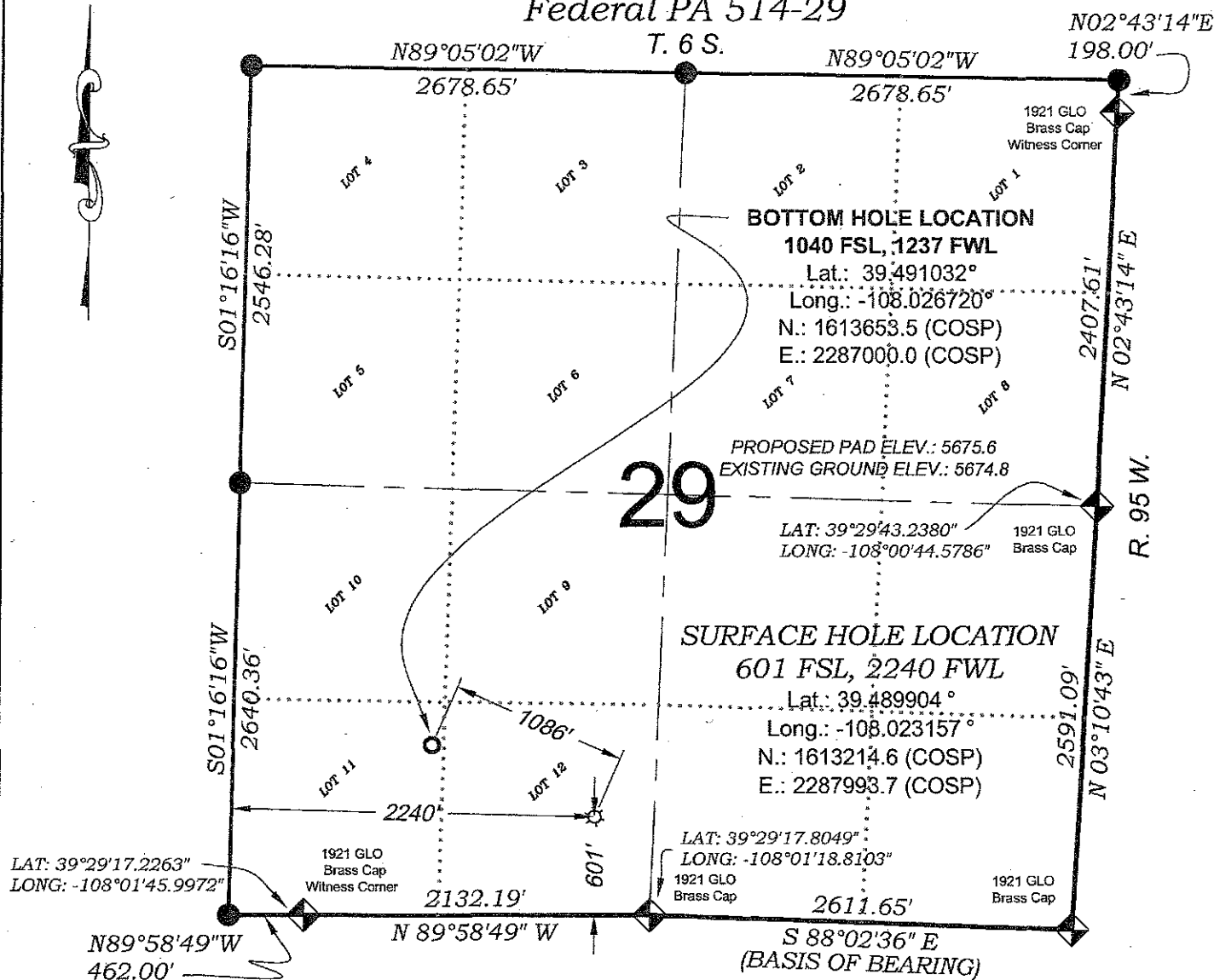


Federal PA 514-29



LAT: 39°29'17.2263"
LONG: -108°01'45.9972"

1921 GLO
Brass Cap
Witness Corner

N89°58'49"W
462.00'

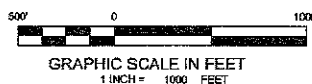
N 89°58'49" W

LAT: 39°29'17.8049"
LONG: -108°01'18.8103"
1921 GLO
Brass Cap

1921 GLO
Brass Cap

S 88°02'36" E
(BASIS OF BEARING)

SEE CURRENT FOOTAGES SHEET
FOR VISIBLE IMPROVEMENTS
WITHIN 400' OF THIS LOCATION



- LEGEND -

FIELD LOCATED SECTION
MONUMENTS AS DESCRIBED

FIELD SURVEYED
WELL LOCATION

CALCULATED BOTTOM
HOLE LOCATION

CALCULATED SECTION
CORNER LOCATION

SURVEYORS STATEMENT

I, MICHAEL J. LANGHORNE, A REGISTERED LAND SURVEYOR IN THE STATE OF COLORADO DO HEREBY CERTIFY THAT THE SURVEY SHOWN HEREON WAS PREPARED UNDER MY DIRECT SUPERVISION AND HAS BEEN STAKED ON THE GROUND AS SHOWN ON THE PLAT AND CHECKING THAT THIS MAP IS A TRUE REPRESENTATION THEREOF.

Michael J. Langhorne

MICHAEL J. LANGHORNE, COLORADO REGISTRATION NO. 36572
FOR AND ON BEHALF OF
BOOKCLIFF SURVEY SERVICES, INC.

REFERENCES

- 1) DEPENDENT RESURVEY T. 6 S., R. 95 W., 6th P.M. (GLO PLAT)
- 2) U.S.G.S. QUAD: PARACHUTE, CO

NOTES

- 1) ELEVATIONS BASED ON N.A.V.D. 1988 PUBLISHED COORDINATES.
- 2) LATITUDES AND LONGITUDES ARE BASE ON NAD 83, PUBLISHED COORDINATES
- 3) STATE PLANE COORDINATES ARE BASED ON COLORADO CENTRAL ZONE, U.S. SURVEY FEET.
- 4) ELEVATION MASK SET TO 15"
- 5) GPS OPERATOR J. KIRKPATRICK, OBSERVED A PDOP OF LESS THAN 6.0
- 6) SURFACE AND BOTTOM HOLE LOCATIONS ARE MEASURED 90° FROM SECTION LINES.

WELL LOCATION PLAT Prepared for:
Williams. Williams Production, RMT

SE1/4 SW1/4, SECTION 29
T. 6 S., R. 95 W. of the 6th P.M.
GARFIELD COUNTY, COLORADO

136 East Third Street
Ft. Collins, Colorado 81502
Ph: (970) 625-1330
Fax: (970) 625-3712



BOOKCLIFF
Survey Services, Inc.

SURVEY DATE: 11/18/08
MAP DATE: 4/14/09
SCALE: 1" = 1000'
SHEET: 1 of 9
PROJECT: Williams