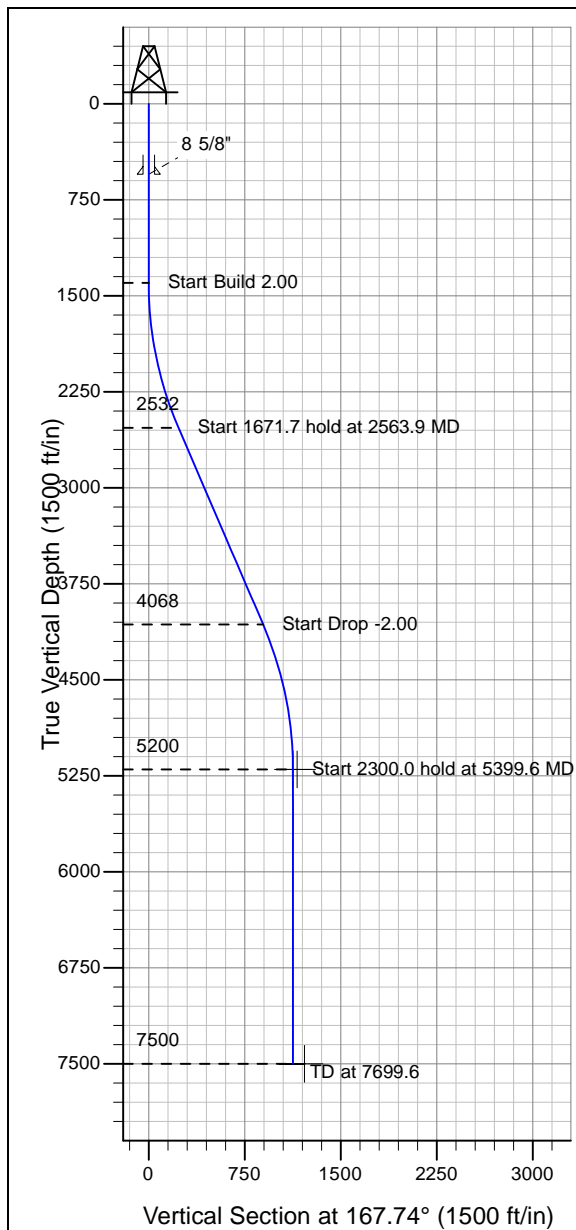
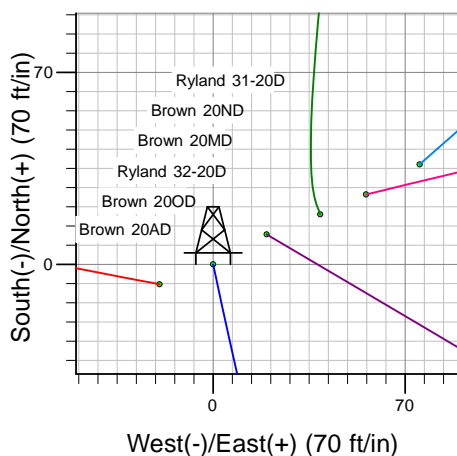
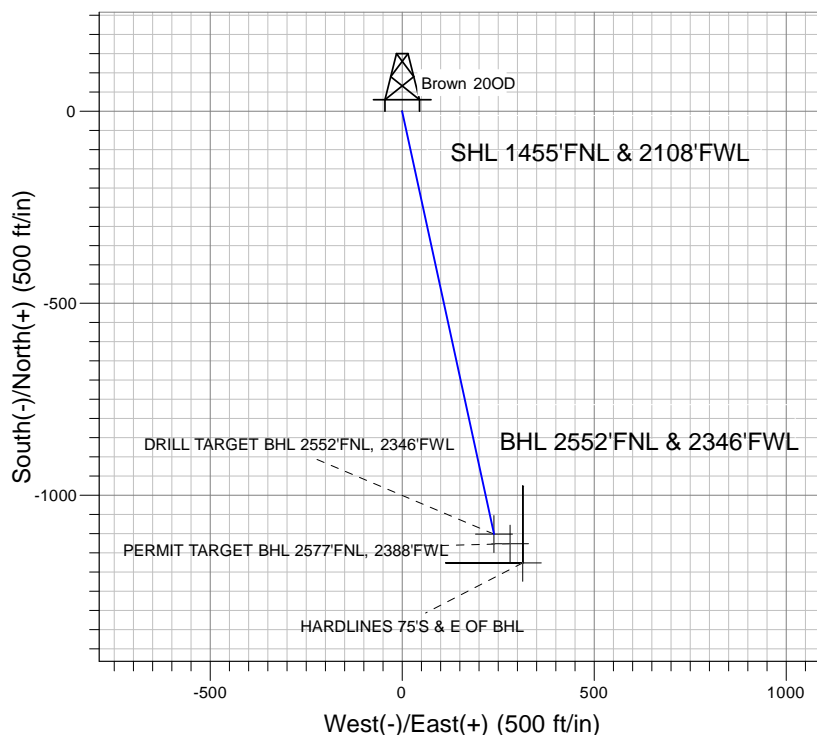


Surface Location: Brown/Ryland Pad Sec.20-T4N-R67W  
North American Datum 1983 , US State Plane 1983 , Colorado Northern Zone  
Ground Elevation: 4900.0

N+-S+/-W	Northing	Easting	Latitude	Longitude	Slot
0.0	0.0	1353327.80	3163035.06	40° 18' 6.516 N 104° 54' 55.656 W	
		Original Well Elev	WELL @ 4913.0ft	(Original Well Elev)	

**PETROLEUM DEVELOPMENT CORP Weld County CO**

Brown/Ryland Pad Sec.20-T4N-R67W  
Brown 200D  
Plan #1 (1-6-10)  
17:47, January 07 2010



Azimuths to True North  
Magnetic North: 9.09°

Magnetic Field  
Strength: 53235.7snT  
Dip Angle: 67.00°  
Date: 12/31/2009  
Model: IGRF200510

## WELLBORE TARGET DETAILS (LAT/LONG)

Name	TVD	+N/-S	+E/-W	Latitude	Longitude	Shape
DRILL TARGET BHL 2552'FNL, 2346'FWL	5200.0	-1101.4	239.3	40° 17' 55.632 N	104° 54' 52.568 W	Point
PERMIT TARGET BHL 2577'FNL, 2388'FWL	5200.0	-1126.4	281.3	40° 17' 55.385 N	104° 54' 52.026 W	Point
HARDLINES 75'S & E OF BHL	7500.0	-1176.4	314.3	40° 17' 54.891 N	104° 54' 51.600 W	Polygon

## SECTION DETAILS

Sec	MD	Inc	Azi	TVD	+N/-S	+E/-W	DLeg	TFace	VSec	Target
1	0.0	0.00	0.00	0.0	0.0	0.0	0.00	0.00	0.0	
2	1400.0	0.00	0.00	1400.0	0.0	0.0	0.00	0.00	0.0	
3	2563.9	23.28	167.74	2532.2	-227.9	49.5	2.00	167.74	233.2	
4	4235.7	23.28	167.74	4067.8	-873.5	189.8	0.00	0.00	893.9	
5	5399.6	0.00	0.00	5200.0	-1101.4	239.3	2.00	180.00	1127.1	DRILL TARGET BHL 2552'FNL, 2346'FWL
6	7699.6	0.00	0.00	7500.0	-1101.4	239.3	0.00	0.00	1127.1	