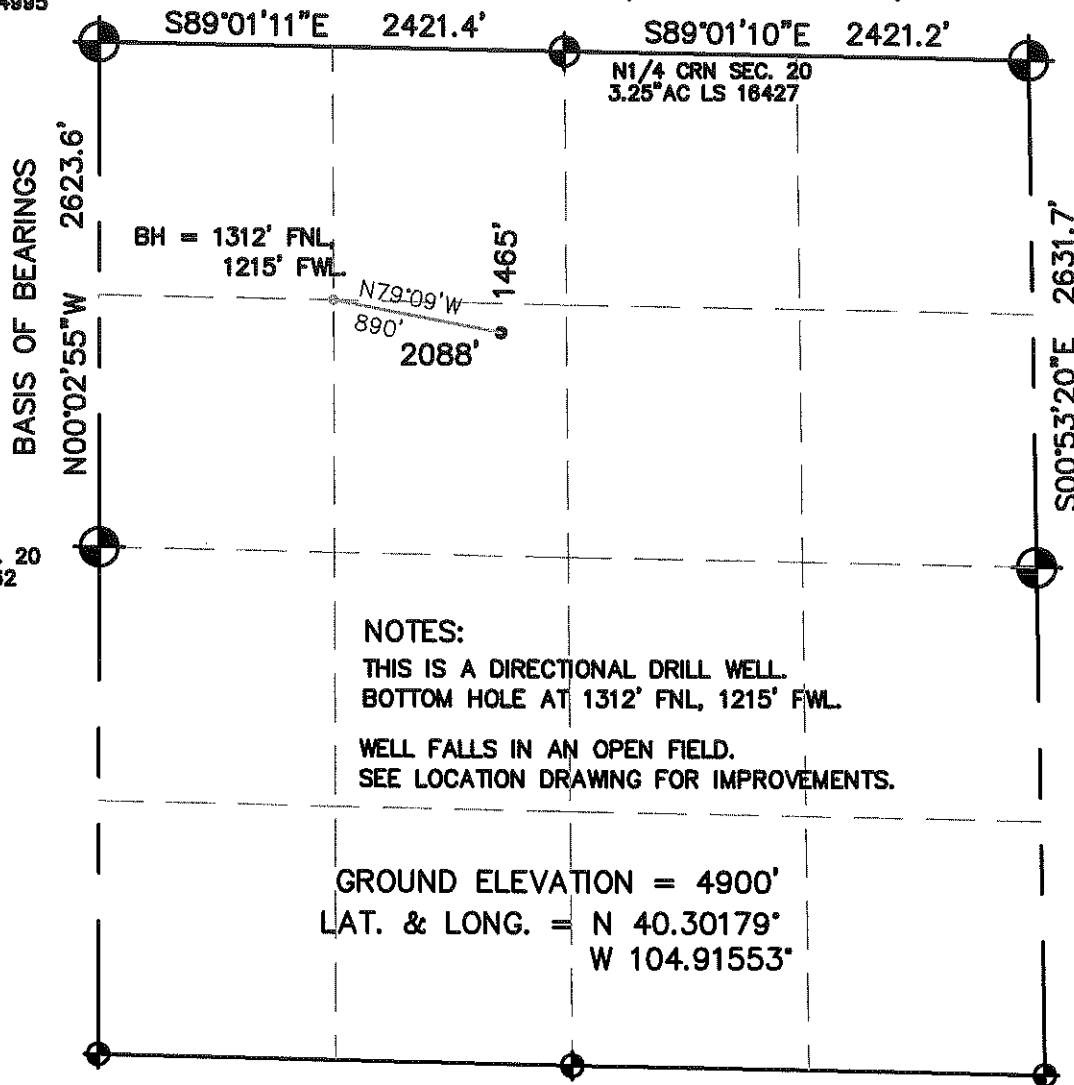


# WELL LOCATION CERTIFICATE

NW CRN SEC. 20  
2.5°AC LS 34995

SECTION 20, TOWNSHIP 4 NORTH, RANGE 67 WEST, 6TH P.M.

NE CRN SEC 20  
2.5°AC LS 23513



## NOTES:

THIS IS A DIRECTIONAL DRILL WELL.  
BOTTOM HOLE AT 1312' FNL, 1215' FWL.

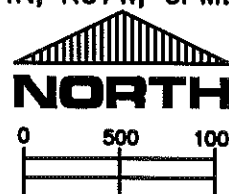
WELL FALLS IN AN OPEN FIELD.  
SEE LOCATION DRAWING FOR IMPROVEMENTS.

GROUND ELEVATION = 4900'  
LAT. & LONG. = N 40.30179°  
W 104.91553°

I HEREBY STATE TO PETROLEUM DEV. CORP. THAT THIS WELL LOCATION CERTIFICATE  
FOR THE WELL BROWN 20AD IS LOCATED 1465' FNL & 2088' FWL, SEC. 20, T4N, R67W, 6PM.

## LEGEND

- = FOUND MONUMENT
- = PROPOSED WELL
- = IMPROVEMENTS (AS LABELED)



SCALE 1" = 1000'

ELEVATION SOURCE = USGS 7.5' QUAD.MAP CONTOURS  
NGVD 1929 DATUM.

LAT. & LONG. ARE DIFFERENTIALLY CORRECTED (NAD'83)  
USING (DGPS) WITH (PDOP) VALUES LESS THAN SIX (6).

SHOWN DISTANCES ARE FIELD MEASURED - EXTERIOR SECTION LINES  
ARE DRAWN TO SCALE (BEST APPROX. OR FOUND MONUMENT ).

DISTANCES TO WELL SHOWN PERPENDICULAR  
TO SECTION LINES.

THOMAS G. CARLSON, PLS 24657  
HORSESHOE SURVEYING, LLC

THIS IS NOT A MONUMENTED BOUNDARY SURVEY, IT IS ONLY A  
DRAWING INTENDED TO DEPICT THE WELL LOCATION TO SECTION LINES.

PREPARED BY:		HORSESHOE SURVEYING, LLC PO BOX 150458 LAKEWOOD, CO 80215 (720)872-0196		WELL NAME:		BROWN 20AD	
DRAWING DATE:		12-21-09		LOCATION:		WELD COUNTY, CO NW1/4, SEC. 20, T4N, R67W, 6TH P.M.	
FIELD DATE:	BY:	CHKD:	JOB NO.	SHEET NO.			
12-21-09	TGC			1 OF 1			