

K. P. Kauffman Company, Inc.

RML #12-8-33

NWSW section 8-T4N-R66W

Weld Co., Colorado

Directional plot

# Well Plan

Well Name	Vertical Section Azimuth	Units
RML #12-8-33	223.51	ft,°/100ft

www.makinhole.com

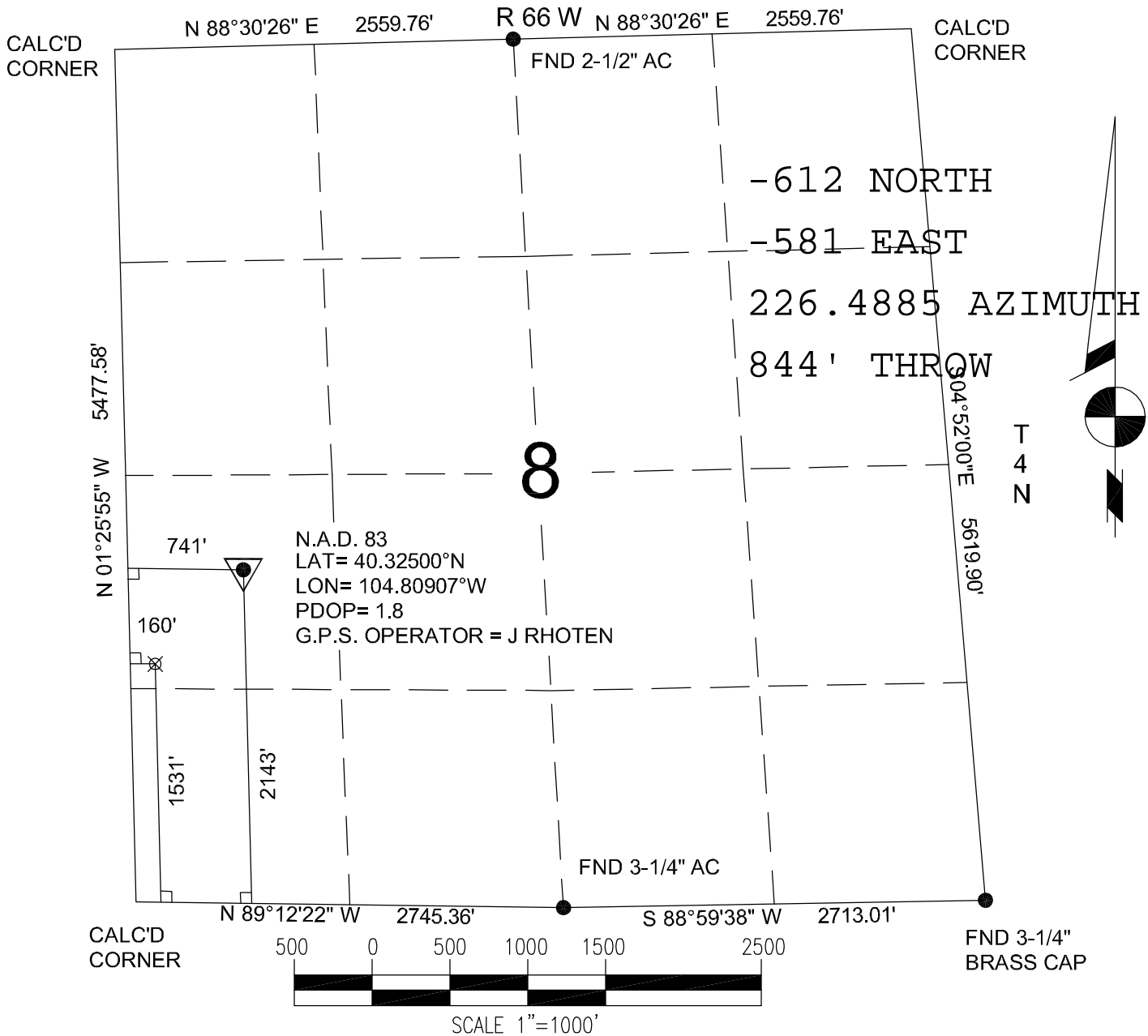
MD*	INC*	AZI*	TVD*	N*	E*	DLS*	Vert. Sec.*	Description	Reference Note
0.00	0.00	0.0	0.00	0.00	0.00		0.00	tie point RKB	
100.00	0.00	0.0	100.00	0.00	0.00	0.00	0.00	vertical	
200.00	0.00	0.0	200.00	0.00	0.00	0.00	0.00	vertical	
300.00	0.00	0.0	300.00	0.00	0.00	0.00	0.00	vertical	
400.00	0.00	0.0	400.00	0.00	0.00	0.00	0.00	vertical	
500.00	0.00	0.0	500.00	0.00	0.00	0.00	0.00	vertical	
600.00	0.00	0.0	600.00	0.00	0.00	0.00	0.00	vertical	
700.00	0.00	0.0	700.00	0.00	0.00	0.00	0.00	vertical	
800.00	0.00	0.0	800.00	0.00	0.00	0.00	0.00	vertical	
900.00	0.00	0.0	900.00	0.00	0.00	0.00	0.00	vertical	
1000.00	0.00	0.0	1000.00	0.00	0.00	0.00	0.00	vertical	
1100.00	0.00	0.0	1100.00	0.00	0.00	0.00	0.00	vertical	
1200.00	0.00	0.0	1200.00	0.00	0.00	0.00	0.00	End vertical KOP	
1300.00	3.35	223.5	1299.94	-2.12	-2.01	3.35	2.92	build	
1400.00	6.70	223.5	1399.54	-8.47	-8.04	3.35	11.68	build	
1500.00	10.05	223.5	1498.46	-19.03	-18.07	3.35	26.24	build	
1600.00	13.40	223.5	1596.36	-33.77	-32.06	3.35	46.56	build	
1700.00	16.75	223.5	1692.91	-52.63	-49.96	3.35	72.57	build	
1800.00	20.10	223.5	1787.77	-75.55	-71.72	3.35	104.17	build	
1900.00	23.45	223.5	1880.62	-102.45	-97.26	3.35	141.26	build	
2000.00	26.80	223.5	1971.15	-133.24	-126.49	3.35	183.71	build	
2100.00	30.15	223.5	2059.04	-167.81	-159.31	3.35	231.38	build	
2200.00	33.50	223.5	2143.99	-206.05	-195.61	3.35	284.11	build	
2300.00	36.85	223.5	2225.72	-247.82	-235.27	3.35	341.71	build	
2392.54	39.95	223.5	2298.23	-289.50	-274.84	3.35	399.18	End build TOP OF BUILD	
2400.00	39.73	223.5	2303.96	-292.97	-278.13	2.98	403.96	drop	
2500.00	36.75	223.5	2382.49	-337.85	-320.74	2.98	465.85	drop	
2600.00	33.78	223.5	2464.13	-379.72	-360.48	2.98	523.58	drop	
2700.00	30.80	223.5	2548.66	-418.45	-397.26	2.98	576.99	drop	

MD*	INC*	AZI*	TVD*	N*	E*	DLS*	Vert. Sec.*	Description	Reference Note
2800.00	27.83	223.5	2635.85	-453.96	-430.96	2.98	625.94	drop	
2900.00	24.85	223.5	2725.46	-486.13	-461.50	2.98	670.30	drop	
3000.00	21.87	223.5	2817.25	-514.88	-488.80	2.98	709.95	drop	
3100.00	18.90	223.5	2910.97	-540.14	-512.78	2.98	744.78	drop	
3200.00	15.92	223.5	3006.38	-561.84	-533.38	2.98	774.70	drop	
3300.00	12.95	223.5	3103.22	-579.92	-550.54	2.98	799.63	drop	
3400.00	9.97	223.5	3201.21	-594.32	-564.22	2.98	819.49	drop	
3500.00	7.00	223.5	3300.11	-605.02	-574.37	2.98	834.24	drop	
3600.00	4.02	223.5	3399.63	-611.98	-580.98	2.98	843.84	drop	
3600.37	4.01	223.5	3400.00	-612.00	-581.00	2.98	843.86	End drop TOP OF DROP	
3700.00	2.88	223.5	3499.45	-616.34	-585.12	1.13	849.85	drop/invert	
3800.00	1.76	223.5	3599.37	-619.28	-587.91	1.13	853.90	drop/invert	
3900.00	0.63	223.5	3699.34	-620.79	-589.34	1.13	855.98	drop/invert	
4000.00	0.50	43.5	3799.34	-620.87	-589.42	1.13	856.09	drop/invert	
4100.00	1.63	43.5	3899.32	-619.52	-588.14	1.13	854.24	drop/invert	
4200.00	2.76	43.5	3999.25	-616.75	-585.51	1.13	850.41	drop/invert	
4300.00	3.89	43.5	4099.08	-612.55	-581.52	1.13	844.62	drop/invert	
4310.95	4.01	43.5	4110.00	-612.00	-581.00	1.13	843.86	End drop/invert TOP OF SUSSEX	
4400.00	2.73	43.5	4198.90	-608.20	-577.39	1.43	838.63	drop/invert	
4500.00	1.30	43.5	4298.83	-605.65	-574.97	1.43	835.10	drop/invert	
4600.00	0.13	223.5	4398.82	-604.90	-574.26	1.43	834.07	drop/invert	
4700.00	1.56	223.5	4498.81	-605.97	-575.27	1.43	835.54	drop/invert	
4800.00	2.99	223.5	4598.73	-608.84	-578.00	1.43	839.51	drop/invert	
4871.40	4.01	223.5	4670.00	-612.00	-581.00	1.43	843.86	End drop/invert TOP OF SHANNON	
4900.00	3.90	223.5	4698.53	-613.43	-582.36	0.37	845.84	drop/invert	
5000.00	3.54	223.5	4798.32	-618.14	-586.83	0.37	852.33	drop/invert	
5100.00	3.17	223.5	4898.14	-622.38	-590.85	0.37	858.18	drop/invert	
5200.00	2.80	223.5	4998.01	-626.16	-594.44	0.37	863.39	drop/invert	
5300.00	2.44	223.5	5097.90	-629.48	-597.59	0.37	867.96	drop/invert	
5400.00	2.07	223.5	5197.83	-632.33	-600.30	0.37	871.89	drop/invert	
5500.00	1.70	223.5	5297.77	-634.72	-602.57	0.37	875.19	drop/invert	

MD*	INC*	AZI*	TVD*	N*	E*	DLS*	Vert. Sec.*	Description	Reference Note
5600.00	1.34	223.5	5397.74	-636.64	-604.39	0.37	877.84	drop/invert	
5700.00	0.97	223.5	5497.72	-638.10	-605.78	0.37	879.85	drop/invert	
5800.00	0.60	223.5	5597.71	-639.10	-606.73	0.37	881.23	drop/invert	
5900.00	0.24	223.5	5697.70	-639.63	-607.23	0.37	881.96	drop/invert	
6000.00	0.13	43.5	5797.70	-639.70	-607.30	0.37	882.06	drop/invert	
6100.00	0.50	43.5	5897.70	-639.30	-606.92	0.37	881.51	drop/invert	
6200.00	0.86	43.5	5997.69	-638.45	-606.11	0.37	880.33	drop/invert	
6300.00	1.23	43.5	6097.68	-637.12	-604.85	0.37	878.50	drop/invert	
6400.00	1.60	43.5	6197.65	-635.33	-603.15	0.37	876.04	drop/invert	
6500.00	1.96	43.5	6297.60	-633.08	-601.02	0.37	872.93	drop/invert	
6600.00	2.33	43.5	6397.53	-630.37	-598.44	0.37	869.19	drop/invert	
6700.00	2.70	43.5	6497.43	-627.19	-595.42	0.37	864.81	drop/invert	
6800.00	3.06	43.5	6597.31	-623.55	-591.96	0.37	859.78	drop/invert	
6900.00	3.43	43.5	6697.15	-619.44	-588.06	0.37	854.12	drop/invert	
7000.00	3.80	43.5	6796.95	-614.87	-583.73	0.37	847.82	drop/invert	
7058.19	4.01	43.5	6855.00	-612.00	-581.00	0.37	843.86	End drop/invert	TOP OF NIOBRARA
7100.00	2.95	43.5	6896.73	-610.16	-579.25	2.54	841.33	drop/invert	
7200.00	0.40	43.5	6996.68	-608.04	-577.24	2.54	838.41	drop/invert	
7300.00	2.14	223.5	7096.66	-609.14	-578.29	2.54	839.92	drop/invert	
7373.45	4.01	223.5	7170.00	-612.00	-581.00	2.54	843.86	End drop/invert	TOP OF FT HAYES
7393.46	4.01	43.5	7190.00	-612.00	-581.00	40.05	843.86	End drop/invert	TOP OF CODELL
7400.00	3.88	43.5	7196.52	-611.67	-580.69	2.00	843.41	drop/invert	
7500.00	1.88	43.5	7296.39	-608.03	-577.24	2.00	838.40	drop/invert	
7600.00	0.13	223.5	7396.37	-606.93	-576.19	2.00	836.87	drop/invert	
7700.00	2.13	223.5	7496.35	-608.36	-577.54	2.00	838.84	drop/invert	
7793.79	4.01	223.5	7590.00	-612.00	-581.00	2.00	843.86	End drop/invert	TOP OF J-SAND
7800.00	3.70	223.5	7596.20	-612.30	-581.29	5.01	844.28	drop/invert	
7900.00	1.31	43.5	7696.14	-613.81	-582.72	5.01	846.36	drop/invert	
7953.92	4.01	43.5	7750.00	-612.00	-581.00	5.01	843.86	End drop/invert	TD

# DIRECTIONAL PLAN

BASIS OF BEARINGS: THE SOUTH LINE OF THE SE 1/4 OF SECTION 8, AS SHOWN HEREON.



Power Surveying Co., Inc. of Frederick, Colorado has in accordance with a request from MIKE PRITCHARD for KP KAUFFMAN CO.

determined the location of RML 12-8-33

to be 2143' FSL & 741' FWL Section 8 , Township 4 NORTH

Range 66 WEST of the Sixth Principal Meridian,  
WELD County, COLORADO

## LOCATION NOTES

LOCATION FALLS IN: PLOWED FIELD

IMPROVEMENTS: EXISTING WELL 50' NORTHEAST OF LOCATION.  
TANK 182' NORTHEAST OF LOCATION

ELEVATION DETERMINED FROM NAVD 1988 DATUM.  
GROUND ELEVATION = 4713'

DISTANCES AND BEARINGS ARE FIELD MEASURED  
UNLESS OTHERWISE NOTED.

## LEGEND

- SECTION CORNER (AS NOTED)
- ▼ PROPOSED WELL LOCATION
- ⊗ PROPOSED BOTTOM HOLE LOCATION



7800 MILLER DRIVE, UNIT C  
FREDERICK, COLORADO 80504

PH. 303-702-1617  
FAX. 303-702-1488  
WWW.POWERSURVEYING.COM

KEVIN E RANDOLPH  
COLORADO P.L.S. #35581

FIELD DATE: 12-12-06 WO# 501-06-1128  
DATE OF COMPLETION: 12-13-06  
REVISED : 1-15-2009 (NAME CHANGE)