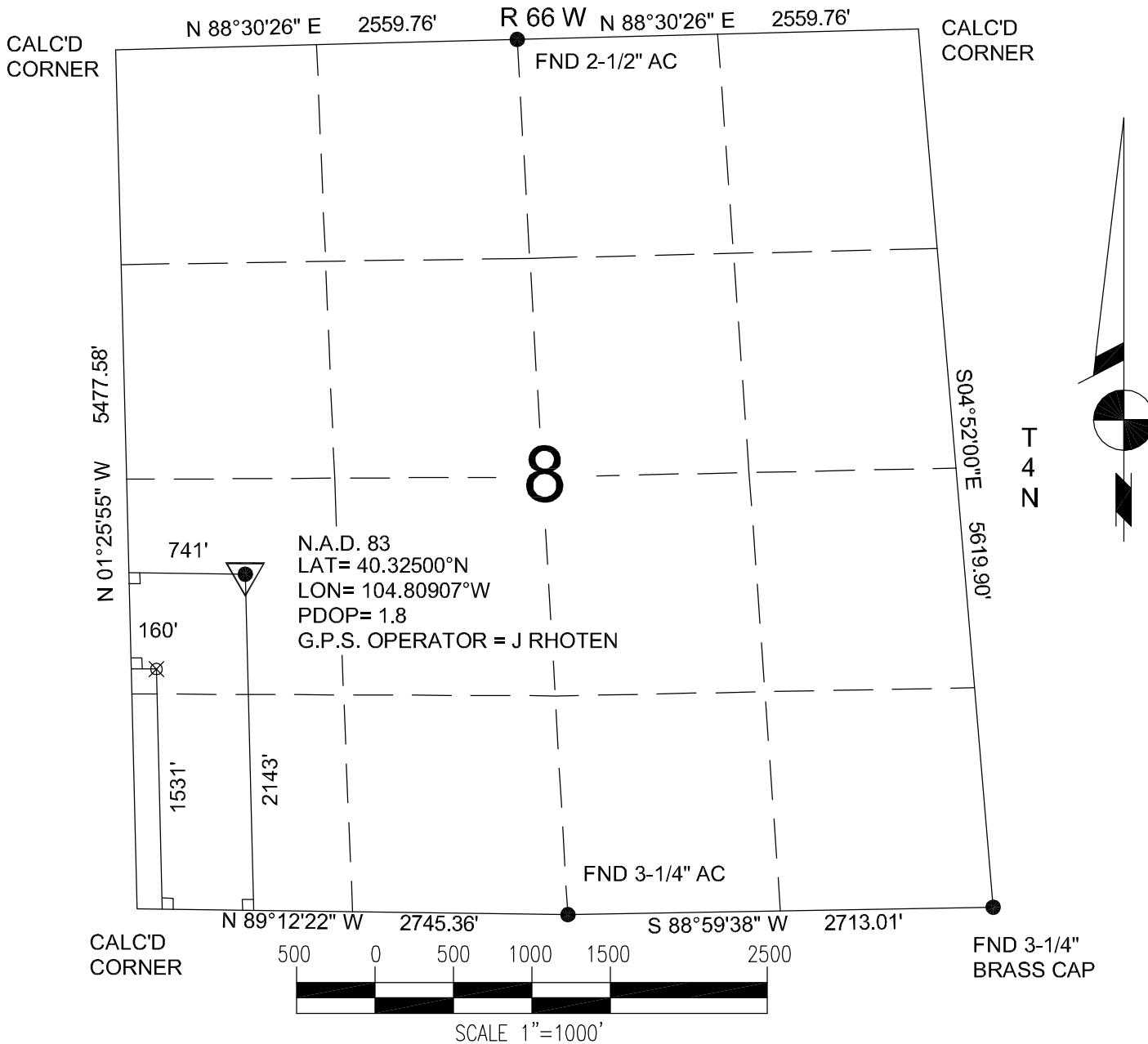


BASIS OF BEARINGS: THE SOUTH LINE OF THE SE 1/4 OF SECTION 8, AS SHOWN HEREON.



Power Surveying Co., Inc. of Frederick, Colorado has in accordance with a request from MIKE PRITCHARD for KP KAUFFMAN CO.

determined the location of RML 12-8-33

to be 2143' FSL & 741' FWL Section 8, Township 4 NORTH

Range 66 WEST of the Sixth Principal Meridian,
WELD County, COLORADO

LOCATION NOTES

LOCATION FALLS IN: PLOWED FIELD

IMPROVEMENTS: EXISTING WELL 50' NORTHEAST OF LOCATION.
TANK 182' NORTHEAST OF LOCATION

ELEVATION DETERMINED FROM NAVD 1988 DATUM.
GROUND ELEVATION = 4713'

DISTANCES AND BEARINGS ARE FIELD MEASURED
UNLESS OTHERWISE NOTED.

LEGEND

- SECTION CORNER (AS NOTED)
- △ PROPOSED WELL LOCATION
- ⊗ PROPOSED BOTTOM HOLE LOCATION



7800 MILLER DRIVE, UNIT C
FREDERICK, COLORADO 80504

PH. 303-702-1617
FAX. 303-702-1488
WWW.POWERSURVEYING.COM

KEVIN E RANDOLPH
COLORADO P.L.S. #35581

FIELD DATE: 12-12-06 WO# 501-06-1128
DATE OF COMPLETION: 12-13-06
REVISED : 1-15-2009 (NAME CHANGE)