

Multi-well Plan

DALEY LAND SURVEYING, INC.

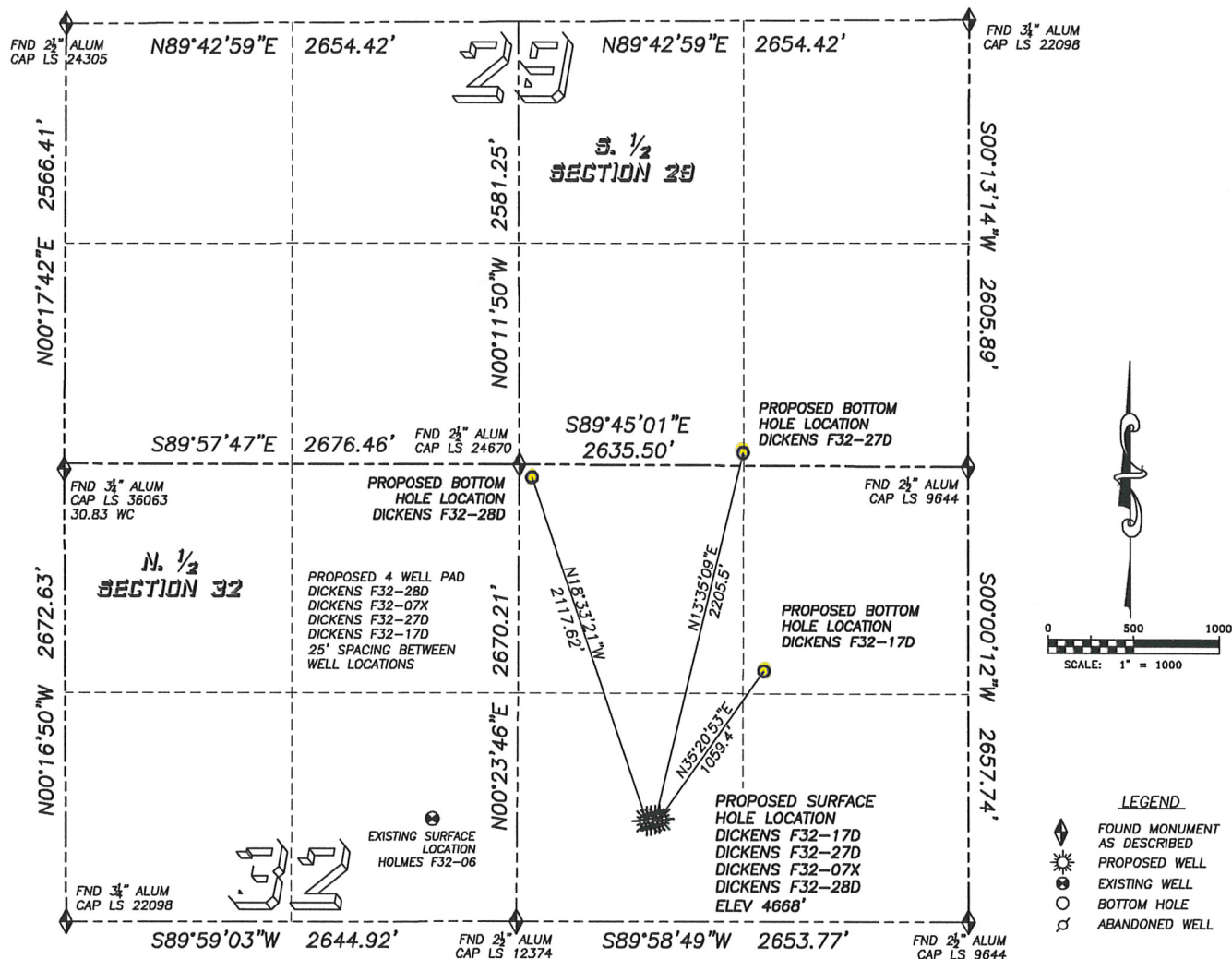
PARKER, CO. 80134

303 953 9841

DIRECTIONAL LAYOUT

DICKENS F32-17D, DICKENS F32-27D DICKENS F32-07X & DICKENS F32-28D

SECTION 32, TOWNSHIP 5 NORTH, RANGE 65 WEST OF THE 6TH PRINCIPAL MERIDIAN



NAD 83 LATITUDE AND LONGITUDE

DICKENS F32-17D

SURFACE HOLE:
LATITUDE: N40.35740°
LONGITUDE: W104.68436°
ELEVATION: 4668'
PDOP 1.9
2067' FNL, 1813' FEL

BOTTOM HOLE:

LATITUDE: N40.35977°
LONGITUDE: W104.68216°
1200' FNL, 1200' FEL

NEAREST EXISTING WELL:

HOLMES F32-6 SURFACE HOLE
LATITUDE: N40.35740°
LONGITUDE: W104.68915°
ELEVATION: 4662'
1336' WEST

NAD 83 LATITUDE AND LONGITUDE

DICKENS F32-27D

SURFACE HOLE:
LATITUDE: N40.35739°
LONGITUDE: W104.68445°
ELEVATION: 4668'
PDOP 1.2
2071' FNL, 1838' FEL

BOTTOM HOLE:

LATITUDE: N40.36327°
LONGITUDE: W104.68259°
75' FSL, 1320' FEL, SEC 29,

NEAREST EXISTING WELL:

HOLMES F32-6 SURFACE HOLE
LATITUDE: N40.35740°
LONGITUDE: W104.68915°
ELEVATION: 4662'
1311' WEST

NAD 83 LATITUDE AND LONGITUDE

DICKENS F32-07X

SURFACE HOLE:
LATITUDE: N40.35737°
LONGITUDE: W104.68454°
ELEVATION: 4668'
PDOP 1.2
2075' FNL, 1862' FEL

NEAREST EXISTING WELL:

HOLMES F32-6 SURFACE HOLE
LATITUDE: N40.35740°
LONGITUDE: W104.68915°
ELEVATION: 4662'
1286' WEST

NAD 83 LATITUDE AND LONGITUDE

DICKENS F32-28D

SURFACE HOLE:
LATITUDE: N40.35736°
LONGITUDE: W104.68463°
ELEVATION: 4668'
PDOP 1.8
2080' FNL, 1887' FEL

BOTTOM HOLE:

LATITUDE: N40.36287°
LONGITUDE: W104.68705°
75' FNL, 2561' FEL

NEAREST EXISTING WELL:

HOLMES F32-6 SURFACE HOLE
LATITUDE: N40.35740°
LONGITUDE: W104.68915°
ELEVATION: 4662'
1262' WEST