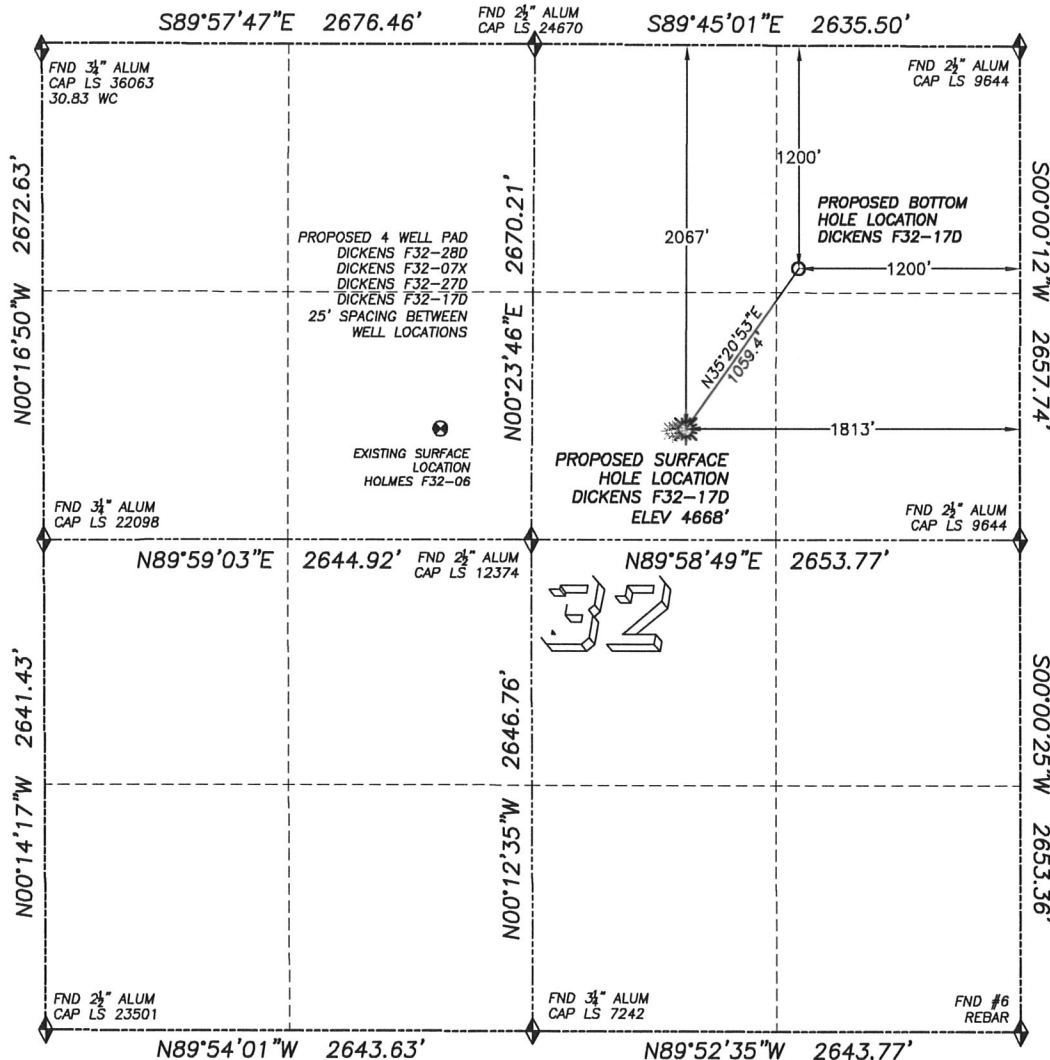


WELL LOCATION CERTIFICATE

DICKENS F32-17D

SECTION 32, TOWNSHIP 5 NORTH, RANGE 65 WEST OF THE 6TH PRINCIPAL MERIDIAN

**LEGEND**

- ◆ FOUND MONUMENT AS DESCRIBED
- ☼ PROPOSED WELL
- EXISTING WELL
- BOTTOM HOLE
- ⊕ ABANDONED WELL

NAD 83 LATITUDE AND LONGITUDE**DICKENS F32-17D SURFACE HOLE:**

LATITUDE: N40.35740°
 LONGITUDE: W104.68436°
 ELEVATION: 4668'
 PDOP 1.9
 2067' FNL, 1813' FEL

BOTTOM HOLE:

LATITUDE: N40.35977°
 LONGITUDE: W104.68216°
 1200' FNL, 1200' FEL

NEAREST EXISTING WELL:

HOLMES F32-6 SURFACE HOLE
 LATITUDE: N40.35740°
 LONGITUDE: W104.68915°
 ELEVATION: 4662'
 1336' WEST

QUARTER/QUARTER: SW4/NE4

NEAREST APPARENT PROPERTY LINE:
 488'± EAST

IN ACCORDANCE WITH A REQUEST FROM ROBBIE MILLER OF NOBLE ENERGY INC., DALEY LAND SURVEYING, INC. HAS DETERMINED THE SURFACE LOCATION OF THE DICKENS F32-17D WELL TO BE 2067' FNL, 1813' FEL, AS MEASURED AT NINETY (90) DEGREES FROM THE SECTION LINES OF SECTION 32, TOWNSHIP 5 NORTH, RANGE 65 WEST OF THE 6TH PRINCIPAL MERIDIAN, WELD COUNTY COLORADO.

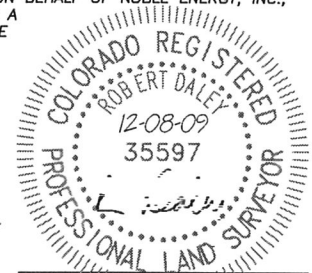
THE BOTTOM HOLE LOCATION PROVIDED BY THE CLIENT IS TO BE 1200' FNL, 1200' FEL OF SEC. 32, T.5N, R.65W.

I HEREBY CERTIFY THAT THIS WELL LOCATION CERTIFICATE WAS PREPARED BY ME OR UNDER MY DIRECT SUPERVISION, THAT THE WORK WAS COMPLETED ON 12/07/2009 FOR AND ON BEHALF OF NOBLE ENERGY, INC., AND THAT THIS MAP DOES NOT REPRESENT A BOUNDARY SURVEY, IT IS NOT A LAND SURVEY PLAT OR AN IMPROVEMENT SURVEY PLAT AND IT IS NOT TO BE RELIED UPON FOR THE ESTABLISHMENT OF FENCE, BUILDING OR OTHER FUTURE IMPROVEMENT LINES.

NOTES:

- 1) BASIS OF BEARING FOR THIS MAP IS ASSUMED AND BASED UPON GPS OBSERVATIONS MADE BETWEEN MONUMENTS LOCATED AT THE NORTHEAST AND NORTH QUARTER CORNERS OF SECTION 32, T.5N., R.65W., AND ALL BEARINGS SHOWN HEREON ARE RELATIVE THERETO.
- 2) HORIZONTAL DATUM IS NAD83.
- 3) VERTICAL DATUM IS NAVD88. ELEVATIONS ARE DERIVED FROM GPS-RTK OBSERVATIONS PROCESSED THROUGH OPUS, UTILIZING THE GEOID03 MODEL.
- 4) SEE VISIBLE IMPROVEMENTS EXHIBIT FOR VISIBLE IMPROVEMENTS WITHIN 400' OF PROPOSED SURFACE HOLE LOCATION
- 5) SURFACE USE: OPEN FIELD

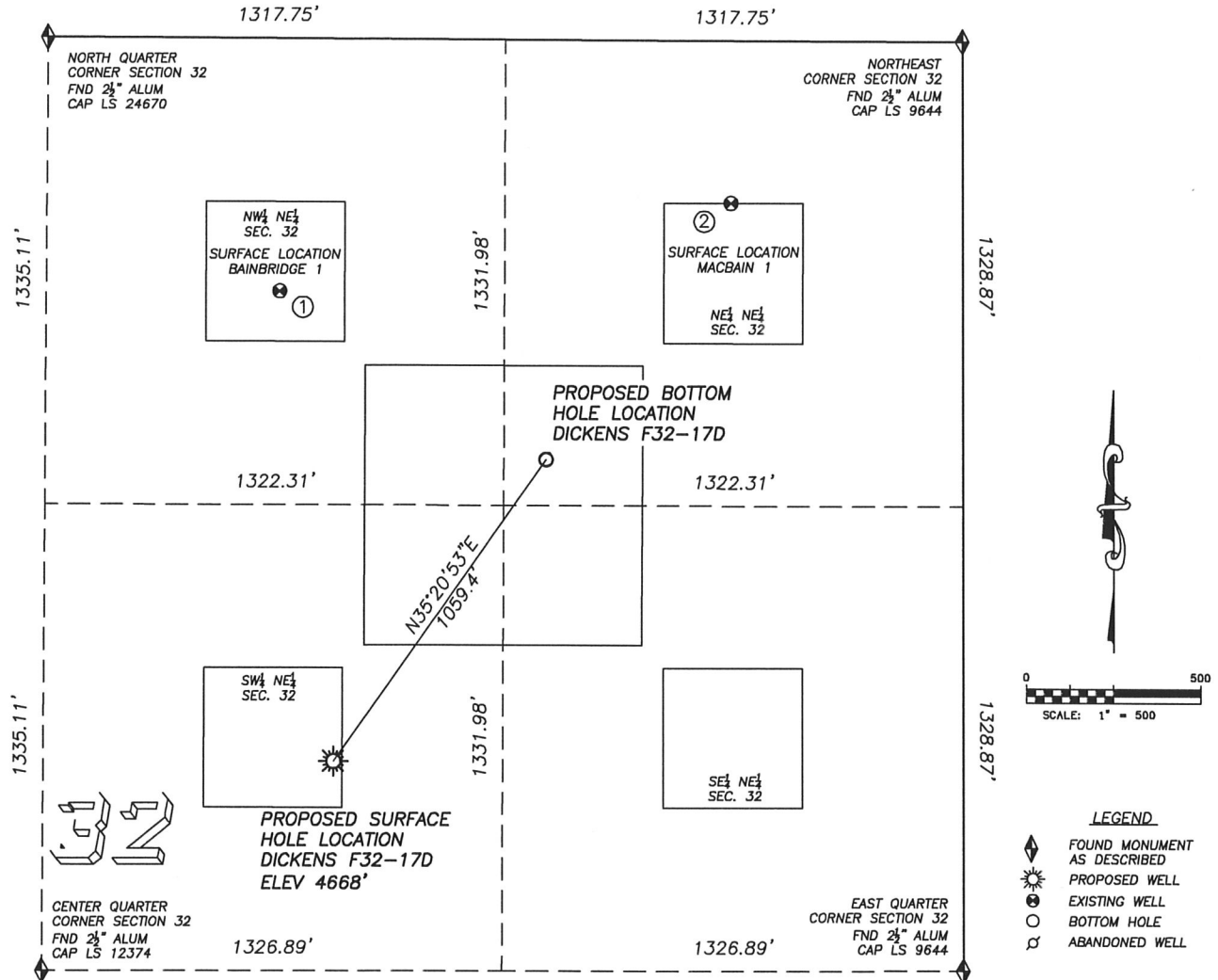
NOTICE: According to Colorado law you MUST commence any legal action based upon any defect in this W.L.C. within three years after you first discover such defect. In no event may any action based upon any such defect in this W.L.C. be commenced more than ten years from the date of the certification shown hereon.



FOR AND ON BEHALF OF
 DALEY LAND SURVEYING INC.,
 Robert Daley, PLS 35597

SITE SKETCH DICKENS F32-17D

SECTION 32, TOWNSHIP 5 NORTH, RANGE 65 WEST OF THE 6TH PRINCIPAL MERIDIAN



①

BAINBRIDGE 1
NW/NE SEC. 32
723' FNL, 1968' FEL
906' NW OF PROPOSED
BOTTOM HOLE LOCATION
LAT. N40.36109°
LONG. W104.68492°
EL: 4650'
PDOP 2.1

②

MACBAIN 1
NE/NE SEC. 32
464' FNL, 667' FEL
907' NE OF PROPOSED
BOTTOM HOLE LOCATION
LAT. N40.36178°
LONG. W104.68025°
EL: 4649'
PDOP 1.6

NOTES:

- 1) THIS DOES NOT REPRESENT A BOUNDARY SURVEY
- 2) THE LATITUDES AND LONGITUDES SHOWN ARE REFERENCED TO NAD83
- 3) DATUM FOR ELEVATION IS NAVD88. ELEVATIONS ARE DERIVED FROM GPS-RTK OBSERVATIONS PROCESSED THROUGH OPUS, UTILIZING THE GEOID03 MODEL.

