

T11S, R90W, 6th P.M.

1922 Brass Cap
1.2' High
Lat: 39.092700°
Long: 107.480372°

1922 Brass Cap
1.2' High, Pile of
Stones
Lat: 39.092717°
Long: 107.471053°

N89°53'24"E - 2646.61' (Meds.)

N89°54'W - 2645.94' (G.L.O.)

N00°07'56"W - 2643.86' (Meds.)

N00°03'W - 2640.00' (G.L.O.)

Lot 2

H.E.S.
#72

1922 Brass Cap
1.2' High
Lat: 39.085444°
Long: 107.480347°

H.E.S.
#73

H.E.S.
#71

20

H.E.S.
#160

SPADAFORA 1190 #20-21
Elev. Ungraded Ground = 8072'

Lot 1

Lot 3

Lot 4

Lot 6

N89°57'W - 5286.60' (G.L.O.)

N00°02'W - 5280.00' (G.L.O.)

NOTE:
SEE ADDENDUM TO LEGAL PLAT FOR
EXISTING IMPROVEMENTS WITHIN 400'
OF THE PROPOSED DISTURBANCE.

LEGEND:

- = 90° SYMBOL
- = PROPOSED WELL HEAD.
- ▲ = SECTION CORNERS LOCATED.

GUNNISON ENERGY CORPORATION

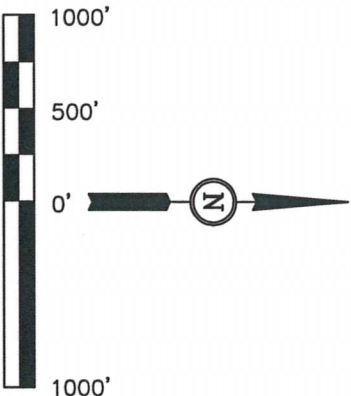
Well location, SPADAFORA 1190 #20-21, located
as shown in H.E.S. #73 of Section 20, T11S,
R90W, 6th P.M., Gunnison County, Colorado.

BASIS OF ELEVATION

SPOT ELEVATION LOCATED AT ROAD INTERSECTION IN THE
NE 1/4 OF SECTION 9, T11S, R90W, 6th P.M. TAKEN FROM
THE BULL MOUNTAIN QUADRANGLE, COLORADO, GUNNISON
COUNTY, 7.5 MINUTE SERIES (TOPO GRAPHICAL MAP)
PUBLISHED BY THE UNITED STATES DEPARTMENT OF THE
INTERIOR, GEOLOGICAL SURVEY. SAID ELEVATION IS MARKED
AS BEING 7487 FEET.

BASIS OF BEARINGS

BASIS OF BEARINGS IS A G.P.S. OBSERVATION.



CERTIFICATE

THIS IS TO CERTIFY THAT THE ABOVE PLAT WAS PREPARED FROM
FIELD NOTES OF ACTUAL SURVEYS MADE BY ME OR UNDER MY
SUPERVISION AND THAT THE SAME ARE TRUE AND CORRECT TO THE
BEST OF MY KNOWLEDGE AND BELIEF.

REGISTERED LAND SURVEYOR
REGISTRATION NO. 12492
STATE OF COLORADO

Revised: 03-22-10

UNTIAH ENGINEERING & LAND SURVEYING
85 SOUTH 200 EAST - VERNAL, UTAH 84078

(435) 789-1017

SCALE	1" = 1000'	DATE SURVEYED:	DATE DRAWN:
PARTY	B.H., G.O., C.H.	11-18-09	12-04-09
WEATHER	COLD	REFERENCES	G.L.O. PLAT
		FILE	GUNNISON ENERGY CORPORATION

PDOP = 1.8

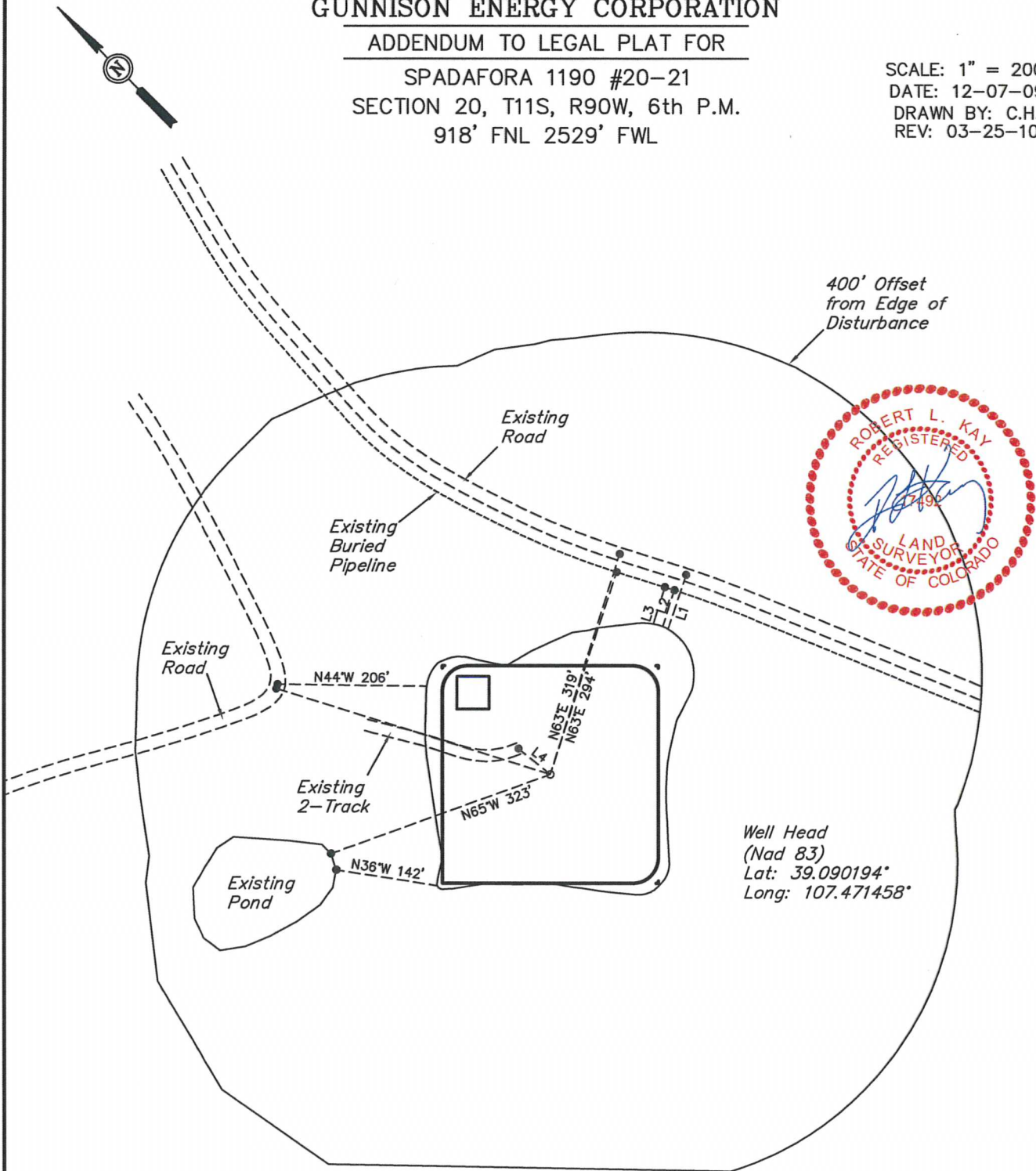
NAD 83 (SURFACE LOCATION)
LATITUDE = 39°05'24.70" (39.090194)
LONGITUDE = 107°28'17.25" (107.471456)
NAD 27 (SURFACE LOCATION)
LATITUDE = 39°05'24.75" (39.090208)
LONGITUDE = 107°28'15.05" (107.470847)
UTM COORD.: NAD 1927 / ZONE 13
N = 14204320.438 E = 939294.860

GUNNISON ENERGY CORPORATION

ADDENDUM TO LEGAL PLAT FOR

SPADAFORA 1190 #20-21
SECTION 20, T11S, R90W, 6th P.M.
918' FNL 2529' FWL

SCALE: 1" = 200'
DATE: 12-07-09
DRAWN BY: C.H.
REV: 03-25-10



LINE TABLE

LINE	DIRECTION	LENGTH
L1	N63°E	79'
L2	N62°E	52'
L3	N62°E	53'
L4	N06°W	57'