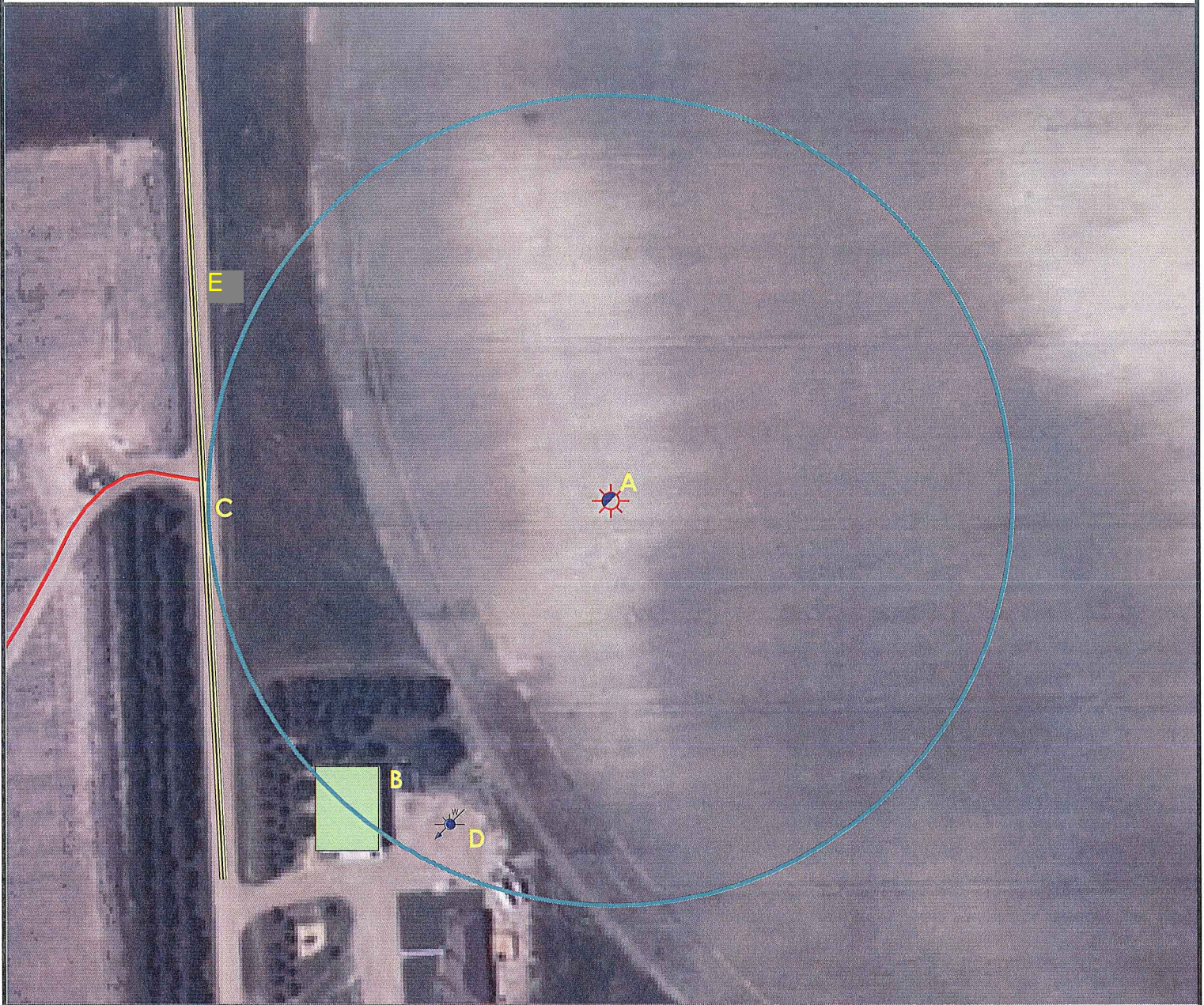


# Location Drawing



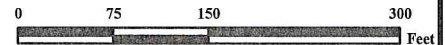
A. Proposed Well CHAPMAN 19-12.

E. Utility line 400' W

B. House is 351' SW.

C. Yuma County Road AA is 400' W.

D. Water Well (Permit# 89684) is 360' SW.



## Legend

- |                      |                       |
|----------------------|-----------------------|
| Proposed Well        | Building/Residence    |
| Existing Well        | Oil & Gas Equipment   |
| Water Well           | Water Body            |
| Pedestal             | Utility Box           |
| CattleGuard/Gate     | Fence                 |
| Bridge               | Overhead Power Line   |
| ECD                  | Pipeline              |
| 400' Radius          | County Road           |
| Facilities Enclosure | Access Road           |
|                      | Ditch/Canal           |
|                      | Concrete Walled Ditch |

## 400ft Radius Map

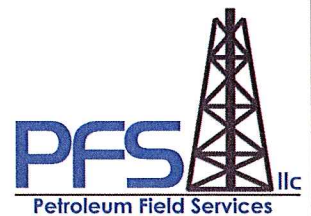
### CHAPMAN 19-12

Surface Location: T1S R44W S19  
Description of surface uses : Irrigated Crop

Field Date: 2/9/2010  
Drawing Date: 2/15/2010  
Drafter: CGR  
Checked By: BHF

Aerial Photo supplied by NAIP (2009)

Prepared for:  
**Roseffa Resources**  
Operating LP  
717 Texas Avenue, Ste. 2800  
Houston, TX 77002



Use our resources to find yours!  
[www.petro-fs.com](http://www.petro-fs.com)

1801 W. 13th Ave Suite 207  
Denver, CO 80204  
(303) 928-7128  
111 E. Third Street  
Rifle, CO 81650  
(970) 625-4740