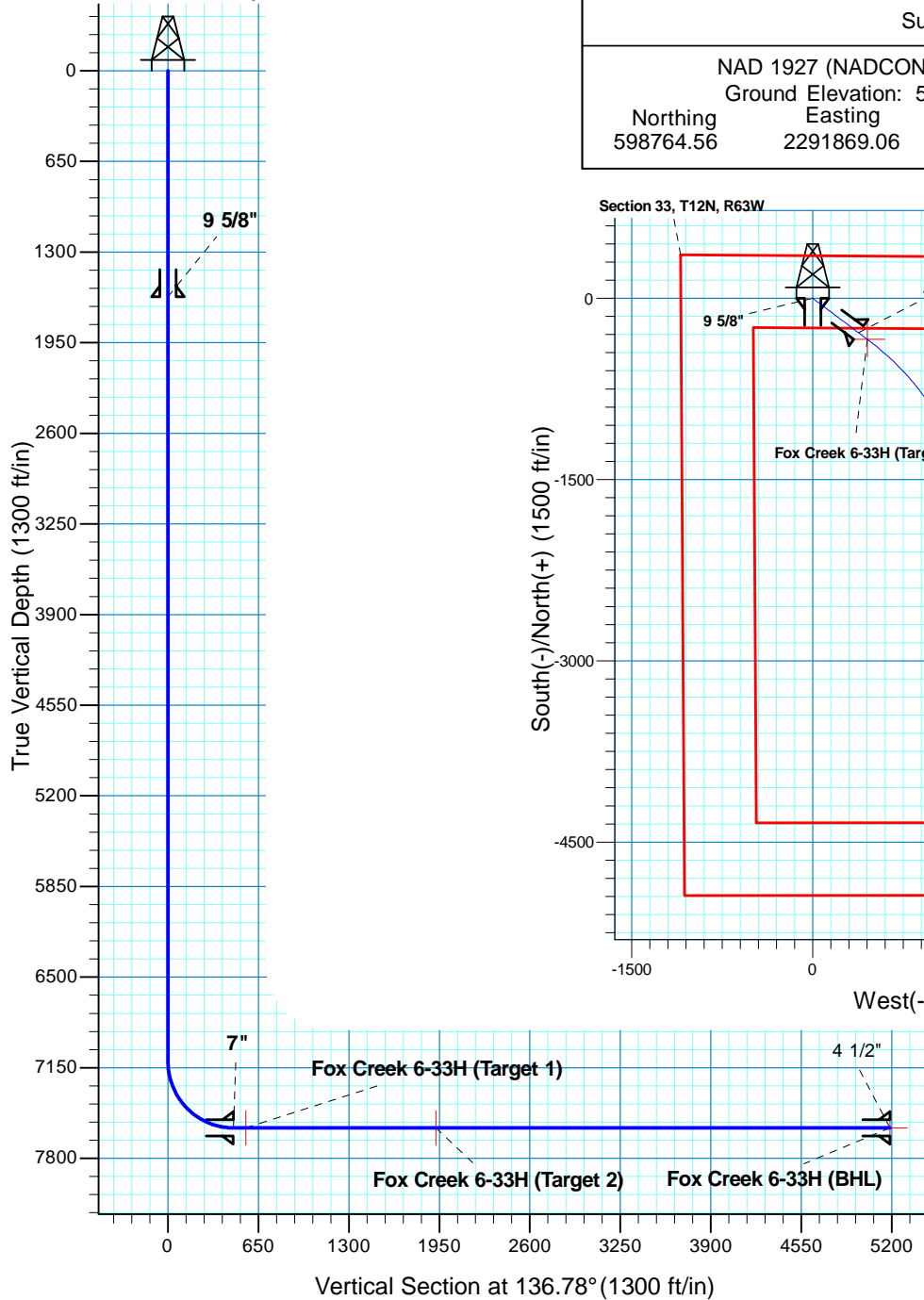


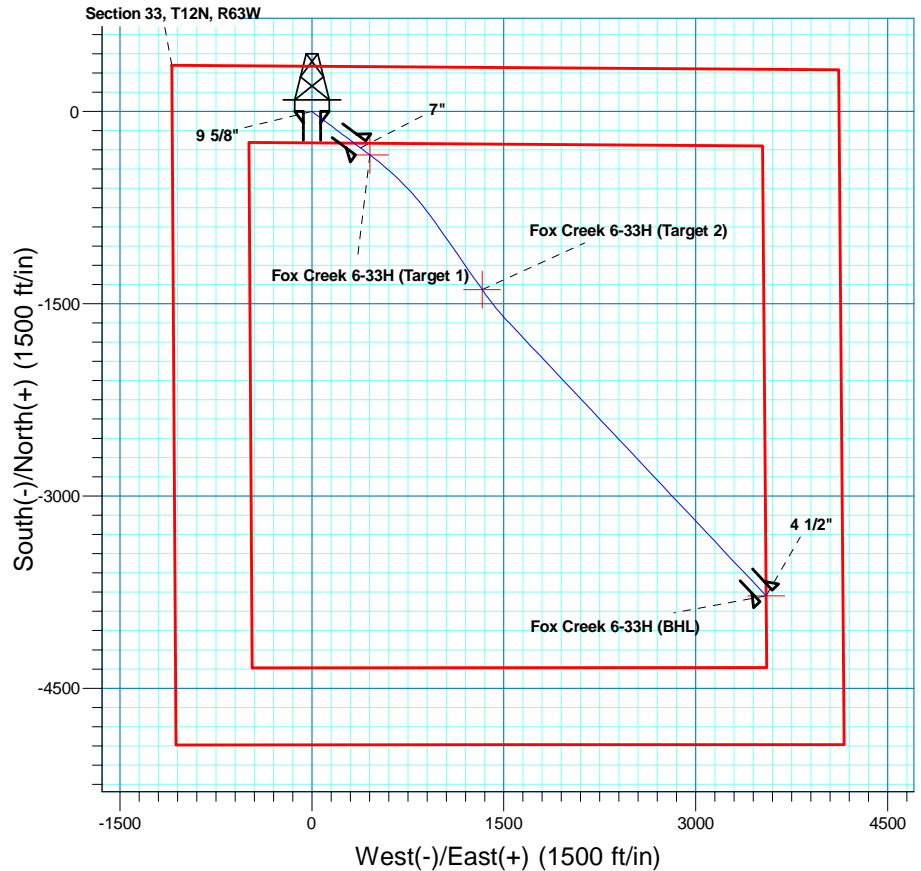
Fox Creek 6-33H

Section 33 T12N R63W

Weld County, CO



Surface Location			
NAD 1927 (NADCON CONUS) Colorado North 501			
Ground Elevation: 5472.0 RIG @ 5497.0ft (TBD)			
Northing	Easting	Latitude	Longitude
598764.56	2291869.06	40° 58' 19.999 N	104° 26' 35.221 W



T M
 Azimuths to True North
 Magnetic North: 8.89°
 Magnetic Field
 Strength: 53622.3snT
 Dip Angle: 67.62°
 Date: 1/26/2010
 Model: IGRF200510

Project: DJ - Hereford Ranch
 Site: Fox Creek 06-33H
 Well: Fox Creek 6-33H
 Plan: APD

SECTION DETAILS

Sec	MD	Inc	Azi	TVD	+N/-S	+E/-W	DLeg	TFace	VSec	Target
1	0.0	0.00	0.00	0.0	0.0	0.0	0.00	0.00	0.0	
2	7103.5	0.00	0.00	7103.5	0.0	0.0	0.00	0.00	0.0	
3	7853.5	90.00	126.77	7581.0	-285.8	382.5	12.00	126.77	470.2	
4	7944.1	90.00	126.77	7581.0	-340.0	455.0	0.00	0.00	559.3	Fox Creek 6-33H (Target 1)
5	8672.5	90.00	144.98	7581.0	-860.7	960.0	2.50	90.00	1284.6	Fox Creek 6-33H (Target 2)
6	9319.0	90.00	144.98	7581.0	-1390.2	1331.0	0.00	0.00	1924.6	Fox Creek 6-33H (Target 2)
7	9651.2	90.00	136.68	7581.0	-1647.4	1540.6	2.50	-90.00	2255.6	Fox Creek 6-33H (BHL)
8	12582.4	90.00	136.68	7581.0	-3779.9	3551.8	0.00	0.00	5186.8	Fox Creek 6-33H (BHL)

TARGET DETAILS

Name	TVD	+N/-S	+E/-W	Northing	Easting	Latitude	Longitude	Shape
Fox Creek 6-33H (BHL)	7581.0	-3779.9	3551.8	595027.24	2295465.63	40° 57' 42.649 N	104° 25' 48.929 W	Point
Fox Creek 6-33H (Target 1)	7581.0	-340.0	455.0	598430.00	2292328.07	40° 58' 16.640 N	104° 26' 29.290 W	Point
Fox Creek 6-33H (Target 2)	7581.0	-1390.2	1331.0	597390.34	2293216.57	40° 58' 6.263 N	104° 26' 17.871 W	Point