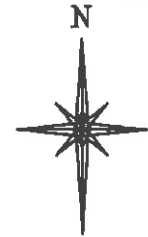
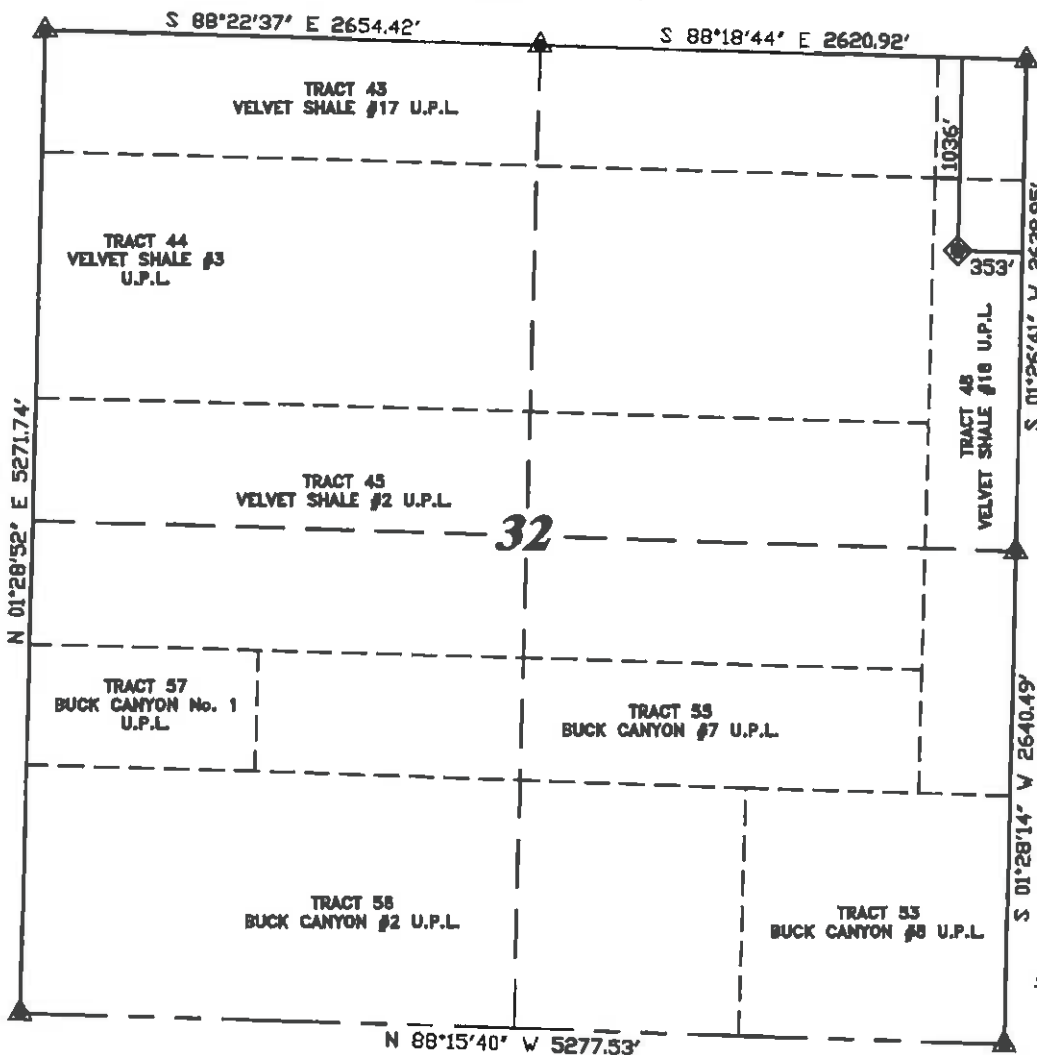


R. 97 W.



SCALE 1" = 1000'

T. 5 S.

LATITUDE (NAD 83)
NORTH 39.574570 DEG.
LONGITUDE (NAD 83)
WEST 108.293532 DEG.

LATITUDE (NAD 27)
NORTH 39.574594 DEG.
LONGITUDE (NAD 27)
WEST 108.292891 DEG.

NORTHING
646262.34
EASTING
1212828.55

BASIS OF BEARING/DATUM
SPCS CO CENTRAL NAD 27
BASED ON NGS TRIANGULATION
STATION "MARC"

NOTES

HIGH PLATEAU DESERT
EXISTING WELL FEATURES WITHIN
400' RADIUS OF WELL SITE.

GPS OPERATOR MARK BESSIE
OBSERVED A PDOP OF 2.8.
ALL GPS OBSERVATIONS ARE IN
COMPLIANCE WITH COGCC RULE No.215.

CHEVRON TR

412-33-597

UNGRADED ELEVATION:
8259.6'

BASIS OF ELEVATION: USGS
CONTROL POINT ELEVATION LOCATED
AT THE SW CORNER SECTION 28,
T5S, R97W, ELEVATION: 7913'



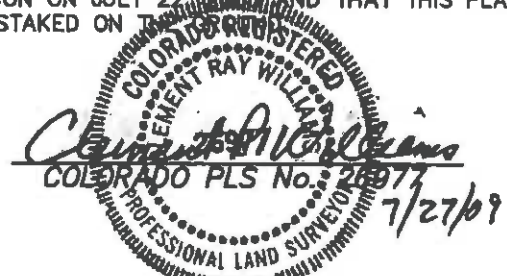
SURVEYOR'S STATEMENT

I, CLEMENT R. WILLIAMS, OF ROCK SPRINGS, WYOMING, HEREBY STATE: THIS MAP WAS MADE FROM NOTES TAKEN DURING AN ACTUAL FIELD SURVEY DONE UNDER MY DIRECT SUPERVISION ON JULY 22, 2009, AND THAT THIS PLAT CORRECTLY SHOWS THE LOCATION OF CHEVRON TR 412-33-597 AS STAKED ON THE GROUND.

LEGEND

- ◆ WELL LOCATION
- BOTTOM HOLE LOC. (APPROX)
- FOUND MONUMENT
- ▲ PREVIOUSLY FOUND MONUMENT

CHEVRON TR 41-32-597 PAD



DRG GRIFFIN & ASSOCIATES, INC.
1414 ELK ST., ROCK SPRINGS, WY 82901

(207) 882-0128

DRAWN: 7/27/09 - MMM

SCALE: 1" = 1000'

REVISED: NA

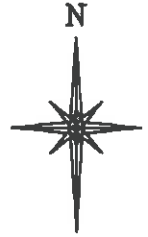
DRG JOB No. 13208

EXHIBIT 1

**PLAT OF DRILLING LOCATION
FOR
WILLIAMS PRODUCTION RMT COMPANY**

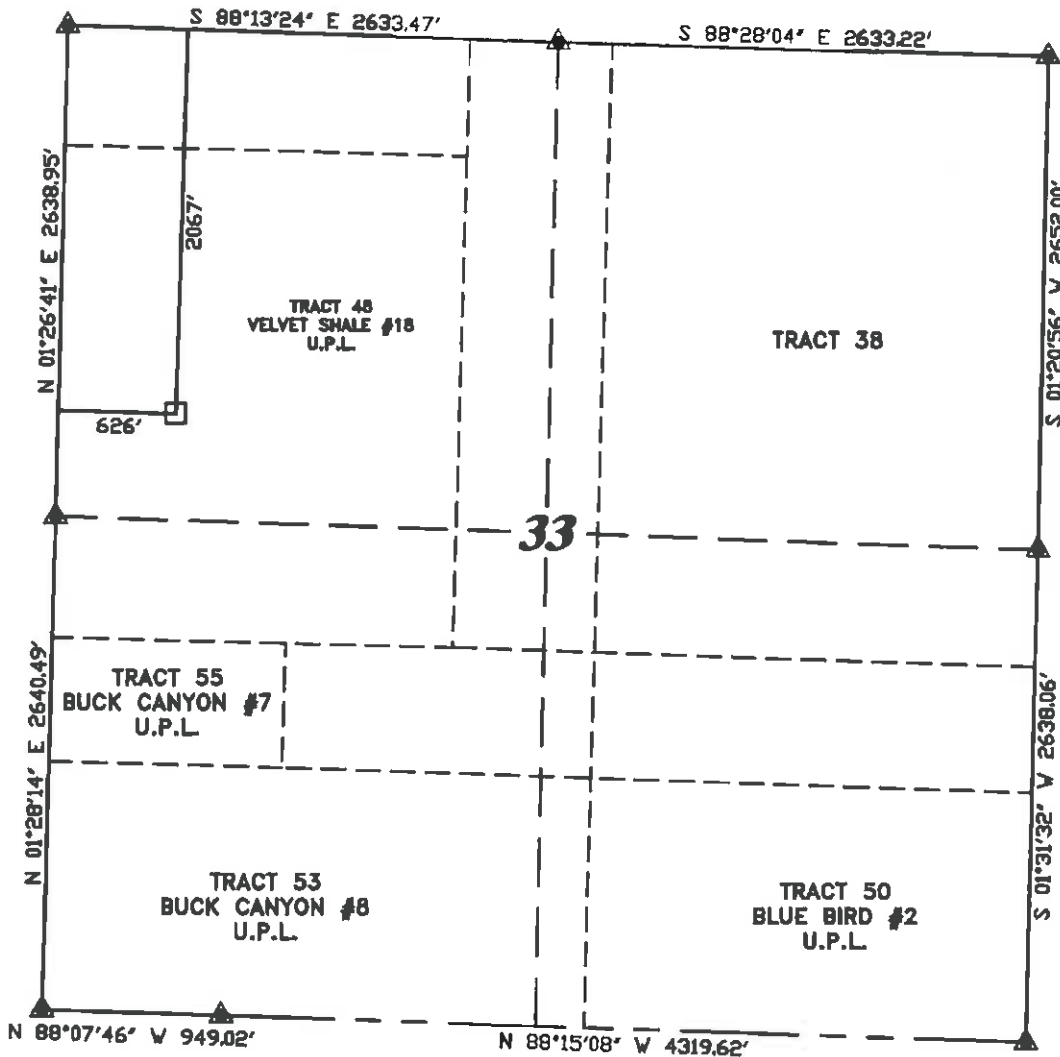
**1036' F/NL & 353' F/EL, SECTION 32,
T. 5 S., R. 97 W., 6th P.M.
GARFIELD COUNTY, COLORADO**

R. 97 W.



SCALE 1" = 1000'

T. 5 S.



LATITUDE (NAD 83)
NORTH 39.571740 DEG.
LONGITUDE (NAD 83)
WEST 108.290039 DEG.

LATITUDE (NAD 27)
NORTH 39.571763 DEG.
LONGITUDE (NAD 27)
WEST 108.289398 DEG.

NORTHING
645202
EASTING
1213781

BASIS OF BEARING/DATUM
SPCS CO CENTRAL NAD 27
BASED ON NGS TRIANGULATION
STATION "MARC"

NOTES

HIGH PLATEAU DESERT
EXISTING WELL FEATURES WITHIN
400' RADIUS OF WELL SITE.

GPS OPERATOR MARK BESSIE
OBSERVED A PDOP OF 2.8.
ALL GPS OBSERVATIONS ARE IN
COMPLIANCE WITH COGCC RULE No.215.

CHEVRON TR
412-33-597
BHL

BASIS OF ELEVATION: USGS
CONTROL POINT ELEVATION LOCATED
AT THE SW CORNER SECTION 28,
T5S, R97W, ELEVATION: 7913'



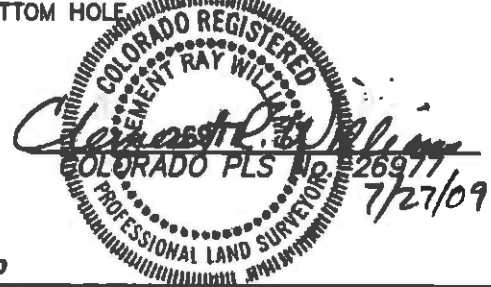
SURVEYOR'S STATEMENT

I, CLEMENT R. WILLIAMS, OF ROCK SPRINGS, WYOMING, HEREBY STATE: THIS MAP WAS MADE FROM NOTES TAKEN DURING AN ACTUAL FIELD SURVEY DONE UNDER MY DIRECT SUPERVISION ON JULY 22, 2008 AND THAT THIS PLAT CORRECTLY SHOWS THE LOCATION OF CHEVRON TR 412-33-597 BOTTOM HOLE.

LEGEND

- ◆ WELL LOCATION
- BOTTOM HOLE LOC. (APPROX)
- FOUND MONUMENT
- ▲ PREVIOUSLY FOUND MONUMENT

CHEVRON TR 41-32-597 PAD



PLAT OF DRILLING LOCATION
FOR
WILLIAMS PRODUCTION RMT COMPANY
2067' F/NL & 626' F/WL, SECTION 33,
T. 5 S., R. 97 W., 6th P.M.
GARFIELD COUNTY, COLORADO

DRG RIFFIN & ASSOCIATES, INC.
(307) 523-0020 1414 ELK ST., ROCK SPRINGS, WY 82901

DRAWN: 7/27/09 - MMM

SCALE: 1" = 1000'

REVISED: NA

DRG JOB No. 13206

EXHIBIT 1