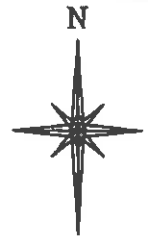
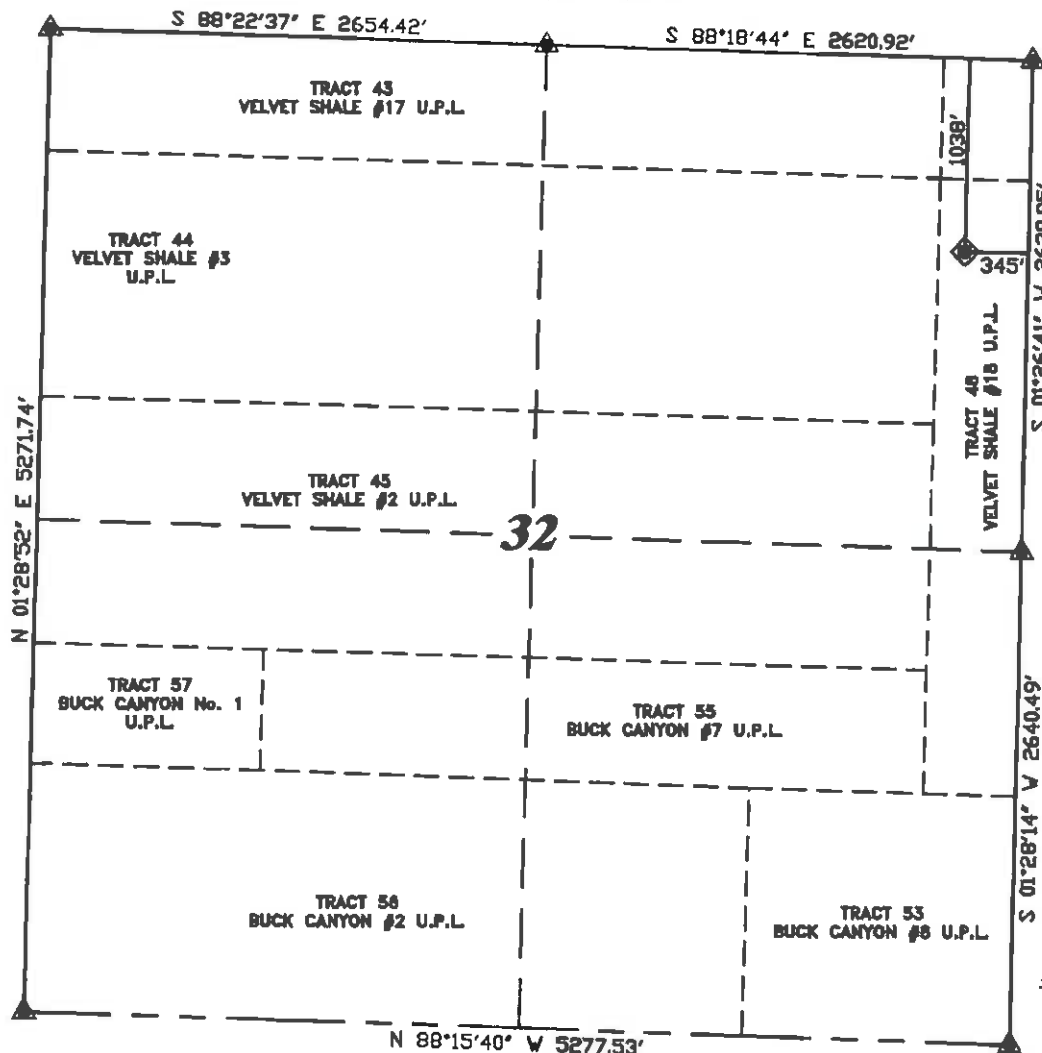


R. 97 W.



SCALE 1" = 1000'

T. 5 S.

LATITUDE (NAD 83)
NORTH 39.574566 DEG.
LONGITUDE (NAD 83)
WEST 108.293506 DEG.

LATITUDE (NAD 27)
NORTH 39.574589 DEG.
LONGITUDE (NAD 27)
WEST 108.292865 DEG.

NORTHING
646260.39
EASTING
1212835.79

BASIS OF BEARING/DATUM
SPCS CO CENTRAL NAD 27
BASED ON NGS TRIANGULATION
STATION "MARC"

NOTES

HIGH PLATEAU DESERT
EXISTING WELL FEATURES WITHIN
400' RADIUS OF WELL SITE.

GPS OPERATOR MARK BESSIE
OBSERVED A PDOP OF 2.8.
ALL GPS OBSERVATIONS ARE IN
COMPLIANCE WITH COGCC RULE No.215.

CHEVRON TR

312-33-597

UNGRADED ELEVATION:
8259.5'

BASIS OF ELEVATION: USGS
CONTROL POINT ELEVATION LOCATED
AT THE SW CORNER SECTION 28,
T5S, R97W, ELEVATION: 7913'



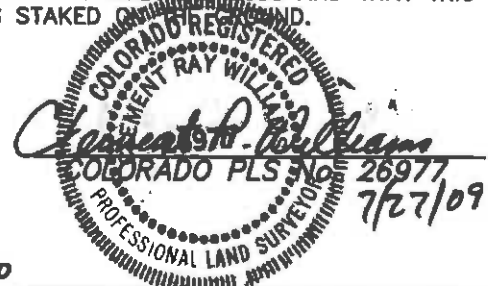
SURVEYOR'S STATEMENT

I, CLEMENT R. WILLIAMS, OF ROCK SPRINGS, WYOMING, HEREBY STATE: THIS MAP WAS MADE FROM NOTES TAKEN DURING AN ACTUAL FIELD SURVEY DONE UNDER MY DIRECT SUPERVISION ON JULY 22, 2008 AND THAT THIS PLAT CORRECTLY SHOWS THE LOCATION OF CHEVRON TR 312-33-597 AS STAKED ON THE GROUND.

LEGEND

- ◆ WELL LOCATION
- BOTTOM HOLE LOC. (APPROX)
- FOUND MONUMENT
- ▲ PREVIOUSLY FOUND MONUMENT

CHEVRON TR 41-32-597 PAD



RIFFIN & ASSOCIATES, INC.
1414 ELK ST., ROCK SPRINGS, WY 82901

**PLAT OF DRILLING LOCATION
FOR
WILLIAMS PRODUCTION RMT COMPANY**
**1038' F/NL & 345' F/EL, SECTION 32,
T. 5 S., R. 97 W., 6th P.M.
GARFIELD COUNTY, COLORADO**

DRAWN: 7/27/09 - MMM

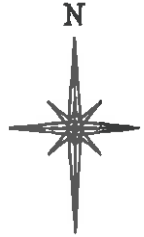
SCALE: 1" = 1000'

REVISED: NA

DRG JOB No. 13206

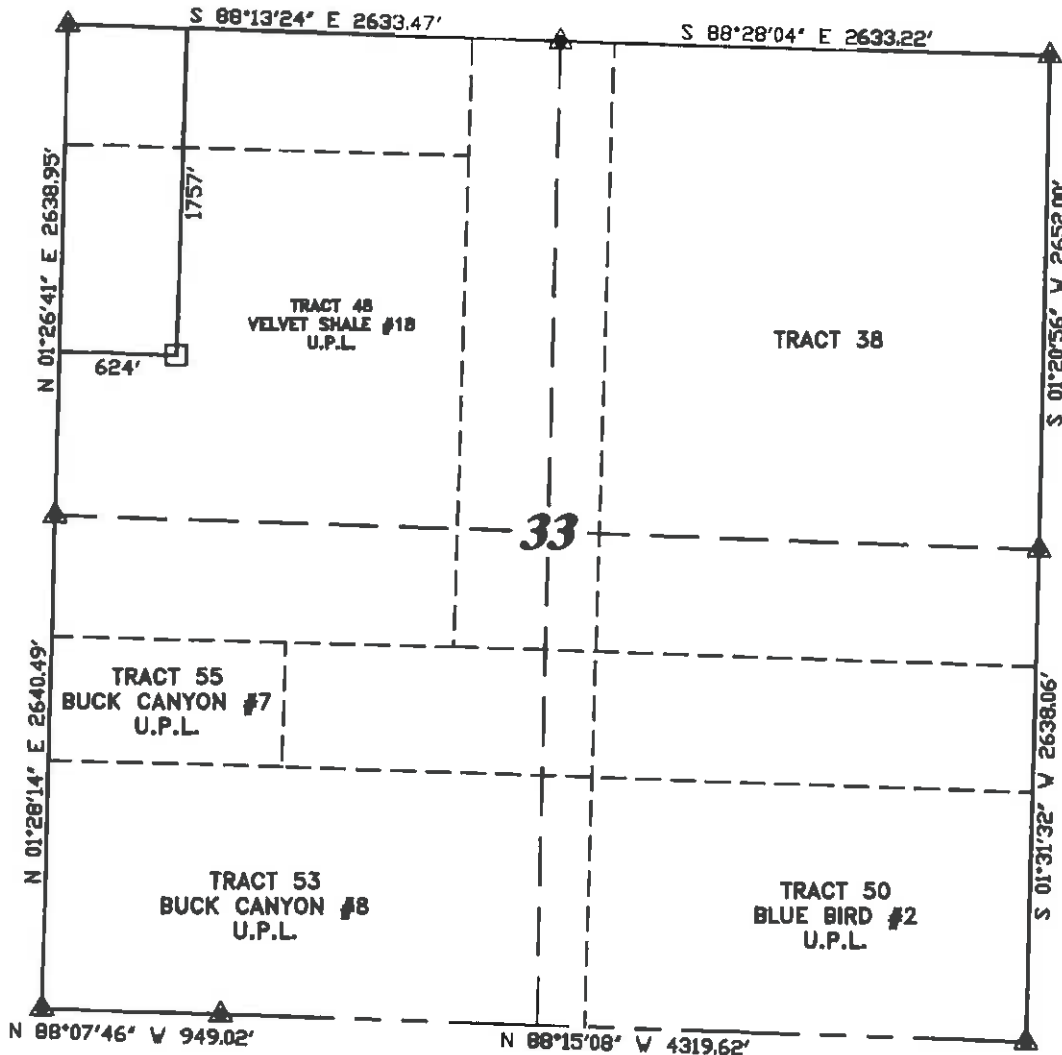
EXHIBIT 1

R. 97 W.



SCALE 1" = 1000'

T. 5 S.



LATITUDE (NAD 83)
NORTH 39.572591 DEG.
LONGITUDE (NAD 83)
WEST 108.290055 DEG.

LATITUDE (NAD 27)
NORTH 39.572614 DEG.
LONGITUDE (NAD 27)
WEST 108.289414 DEG.

NORTHING
645512

EASTING
1213786

BASIS OF BEARING/DATUM
SPCS CO CENTRAL NAD 27
BASED ON NGS TRIANGULATION
STATION "MARC"

NOTES

HIGH PLATEAU DESERT
EXISTING WELL FEATURES WITHIN
400' RADIUS OF WELL SITE.

GPS OPERATOR MARK BESSIE
OBSERVED A PDOP OF 2.8.
ALL GPS OBSERVATIONS ARE IN
COMPLIANCE WITH COGCC RULE No.215.

CHEVRON TR
312-33-597
BHL

BASIS OF ELEVATION: USGS
CONTROL POINT ELEVATION LOCATED
AT THE SW CORNER SECTION 28,
T5S, R97W, ELEVATION: 7913'



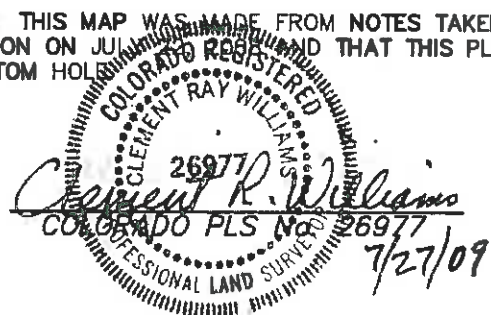
SURVEYOR'S STATEMENT

I, CLEMENT R. WILLIAMS, OF ROCK SPRINGS, WYOMING, HEREBY STATE: THIS MAP WAS MADE FROM NOTES TAKEN DURING AN ACTUAL FIELD SURVEY DONE UNDER MY DIRECT SUPERVISION ON JULY 27, 2009 AND THAT THIS PLAT CORRECTLY SHOWS THE LOCATION OF CHEVRON TR 312-33-597 BOTTOM HOLE.

LEGEND

- ◆ WELL LOCATION
- BOTTOM HOLE LOC. (APPROX)
- FOUND MONUMENT
- ▲ PREVIOUSLY FOUND MONUMENT

CHEVRON TR 41-32-597 PAD



DRG RIFFIN & ASSOCIATES, INC.
(307) 362-6228 1414 ELK ST., ROCK SPRINGS, WY 82901

PLAT OF DRILLING LOCATION
FOR
WILLIAMS PRODUCTION RMT COMPANY

DRAWN: 7/27/09 - MMM

SCALE: 1" = 1000'

REVISED: NA

DRG JOB No. 13206

EXHIBIT 1

1757' F/NL & 624' F/WL, SECTION 33,
T. 5 S., R. 97 W., 6th P.M.
GARFIELD COUNTY, COLORADO