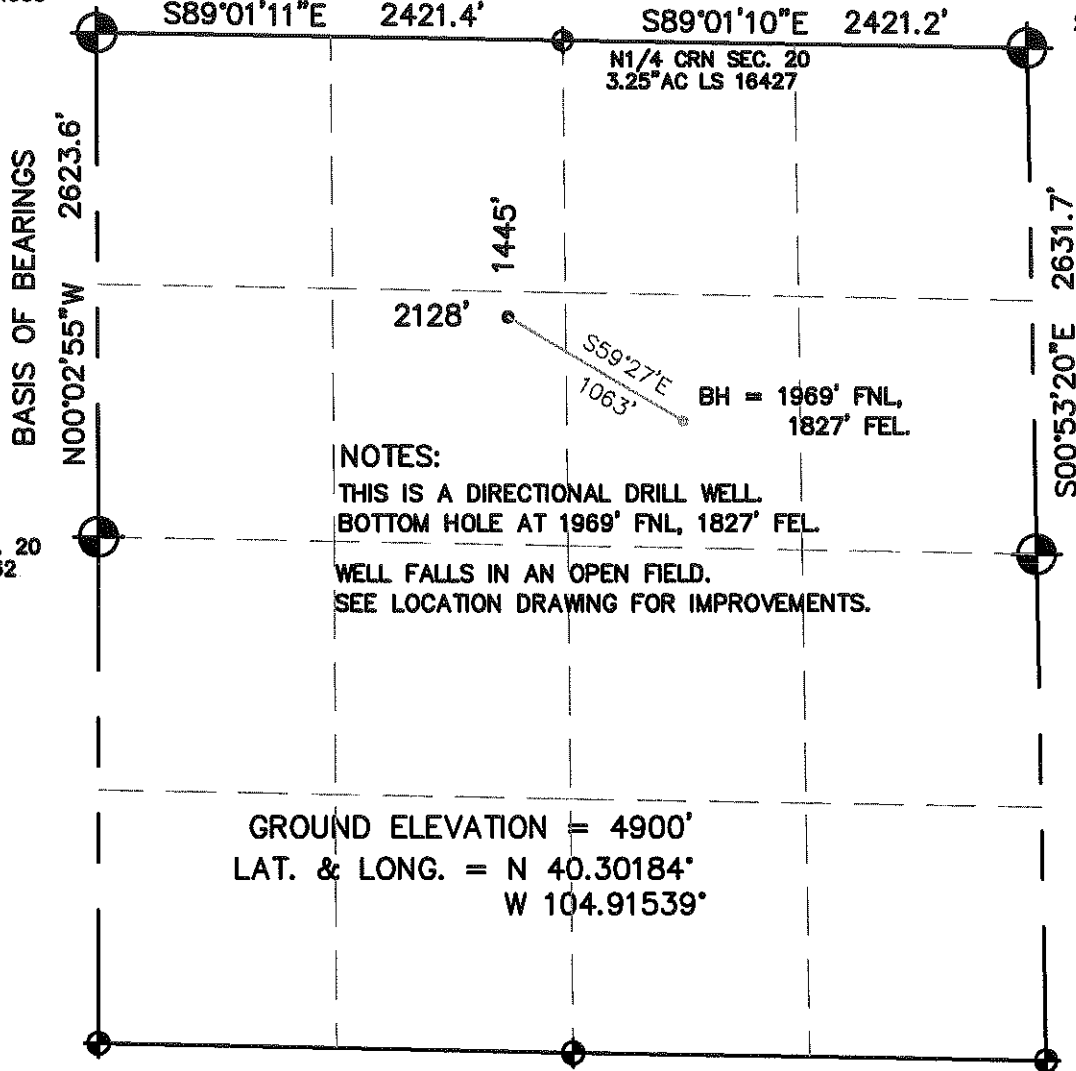


WELL LOCATION CERTIFICATE

NW CRN SEC. 20
2.5°AC LS 34995

SECTION 20, TOWNSHIP 4 NORTH, RANGE 67 WEST, 6TH P.M.

NE CRN SEC 20
2.5°AC LS 23513



NOTES:

THIS IS A DIRECTIONAL DRILL WELL.
BOTTOM HOLE AT 1969' FNL, 1827' FEL.

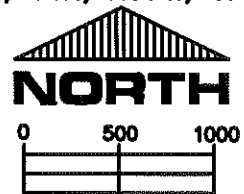
WELL FALLS IN AN OPEN FIELD.
SEE LOCATION DRAWING FOR IMPROVEMENTS.

GROUND ELEVATION = 4900'
LAT. & LONG. = N 40.30184°
W 104.91539°

I HEREBY STATE TO PETROLEUM DEV. CORP. THAT THIS WELL LOCATION CERTIFICATE
FOR THE WELL RYLAND 32-20D IS LOCATED 1445' FNL & 2128' FWL, SEC. 20, T4N, R67W, 6PM.

LEGEND

- = FOUND MONUMENT
- = PROPOSED WELL
- = IMPROVEMENTS (AS LABELED)



SCALE 1" = 1000'

ELEVATION SOURCE = USGS 7.5' QUAD.MAP CONTOURS
NGVD 1929 DATUM.

LAT. & LONG. ARE DIFFERENTIALLY CORRECTED (NAD'83)
USING (DGPS) WITH (PDOP) VALUES LESS THAN SIX (6).

SHOWN DISTANCES ARE FIELD MEASURED - EXTERIOR SECTION LINES
ARE DRAWN TO SCALE (BEST APPROX. OR FOUND MONUMENT).

THOMAS G. CARLSON, PLS 24657
HORSESHOE SURVEYING, LLC

THIS IS NOT A MONUMENTED BOUNDARY SURVEY, IT IS ONLY A
DRAWING INTENDED TO DEPICT THE WELL LOCATION TO SECTION LINES.

DISTANCES TO WELL SHOWN PERPENDICULAR
TO SECTION LINES.

PREPARED BY:		HORSESHOE SURVEYING, LLC PO BOX 150458 LAKEWOOD, CO 80215 (720)872-0196		WELL NAME:		RYLAND 32-20D	
DRAWING DATE:		12-21-09		LOCATION:		WELD COUNTY, CO NW1/4, SEC. 20, T4N, R67W, 6TH P.M.	
FIELD DATE:	BY:	CHKD:	JOB NO.	SHEET NO.			
12-21-09	TGC			1 OF 1			