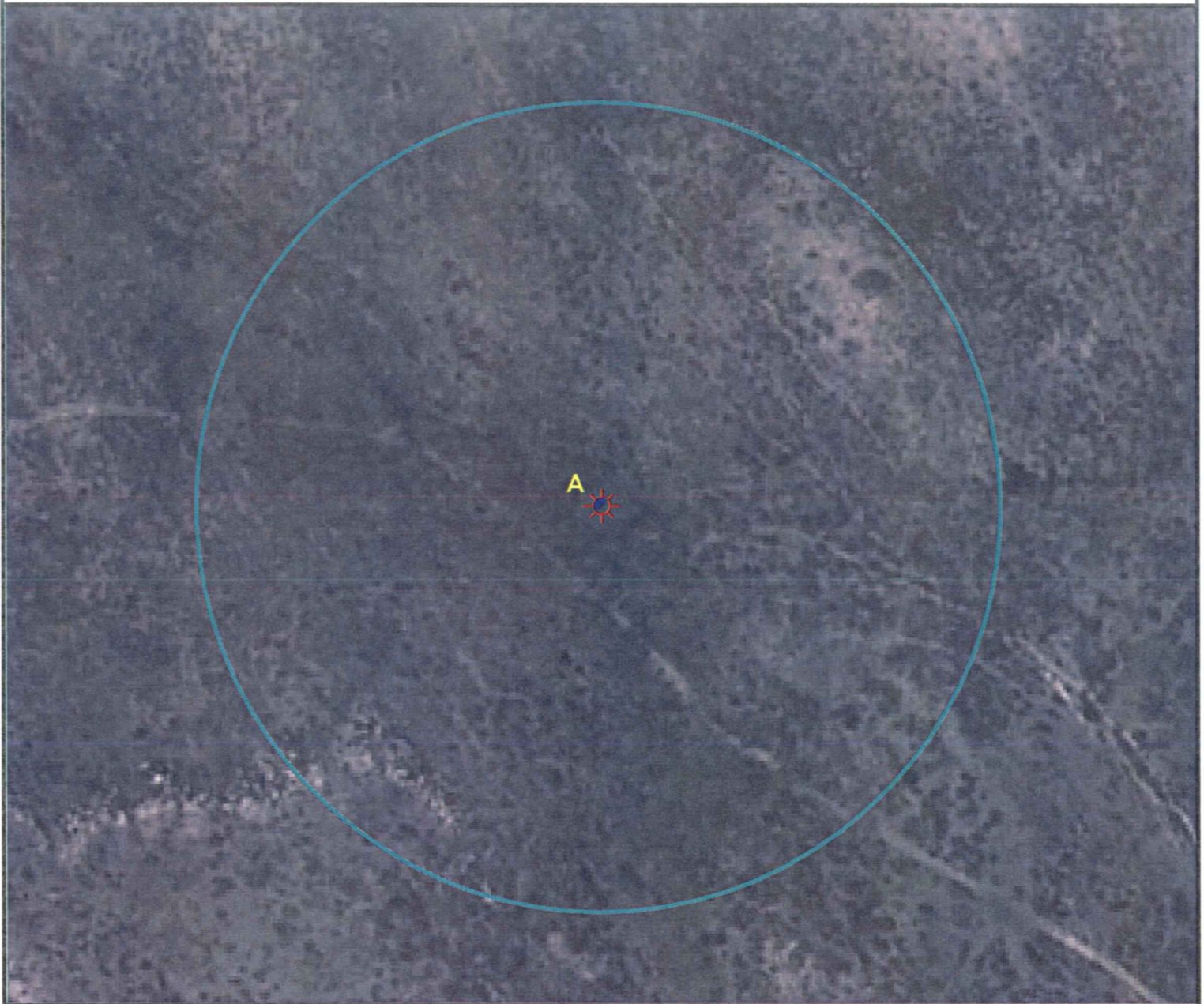
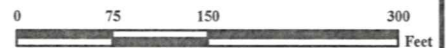


Location Drawing



A. Proposed Well TRUITT 10-03

There are no visible improvements within a 400' radius of the proposed oil and gas location.



Legend

	Proposed Well		Building/Residence
	Existing Well		Oil & Gas Equipment
	Water Well		Water Body
	Pedestal		Utility Box
	CattleGuard/Gate		Railroad
	Bridge		Fence
	ECD		Overhead Power Line
	400' Radius		Pipeline
	Facilities Enclosure		Access Road
			Ditch/Canal
			Concrete Walled Ditch

400ft Radius Map

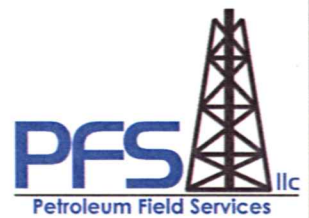
TRUITT 10-03

Surface Location: T3S 44W S10
Description of surface use: Rangeland

Field Date: 2/26/2010
 Drawing Date: 3/2/2010
 Drafter: CGR
 Checked By: BHF

Aerial Photo supplied by NAIP (2009)

Prepared for:
Rosetta Resources
Operating LP
717 Texas Avenue, Ste. 2800
Houston, TX 77002



Use our resources to find yours!
www.petro-fs.com

1801 W. 13th Ave Suite 207
 Denver, CO 80204
 (303) 928-7128
 111 E. Third Street
 Rifle, CO 81650
 (970) 625-4740