



# **US ROCKIES REGION PLANNING**

**COLORADO NORTHERN ZONE - 83**

**WELD\_ EVERIST 4 PAD**

**P\_ EVERIST 25-32**

**P\_ EVERIST 25-32**

**Plan: PLAN #1 3-16-10 RHS**

## **Standard Planning Report**

**16 March, 2010**





Azimuths to True North  
Magnetic North: 9.09°  
Magnetic Field  
Strength: 53132.1nT  
Dip Angle: 66.89°  
Date: 3/16/2010  
Model: IGRF2010

#### WELL DETAILS: P\_EVERIST 25-32

+N/-S	+E/-W	Northing	Easting	Ground Level:	Latitude	Longitude	Slot
0.00	0.00	1309398.33	3164791.57	4808.00	40° 10' 52.284 N	104° 54' 36.756 W	

#### FORMATION TOP DETAILS

TVDPath	MDPath	Formation
4653.00	4747.45	SHANNON
7020.00	7139.65	NIO A
7280.00	7399.65	CODELL
7718.00	7837.65	JSAND

#### SECTION DETAILS

MD	Inc	Azi	TVD	+N/-S	+E/-W	DLeg	TFace	VSec	Target
0.00	0.00	0.00	0.00	0.00	0.00	0.00	0.00	0.00	
740.00	0.00	0.00	740.00	0.00	0.00	0.00	0.00	0.00	
1400.67	13.21	297.85	1394.83	35.43	-67.06	2.00	297.85	75.84	
5478.98	13.21	297.85	5365.17	470.94	-891.30	0.00	0.00	1008.06	
6139.65	0.00	0.00	6020.00	506.37	-958.36	2.00	180.00	1083.91	
7987.65	0.00	0.00	7868.00	506.37	-958.36	0.00	0.00	1083.91	PBHL_EVERIST 25-32(2595 FNL 2595 FEL)50'TGT RAD

#### CASING DETAILS

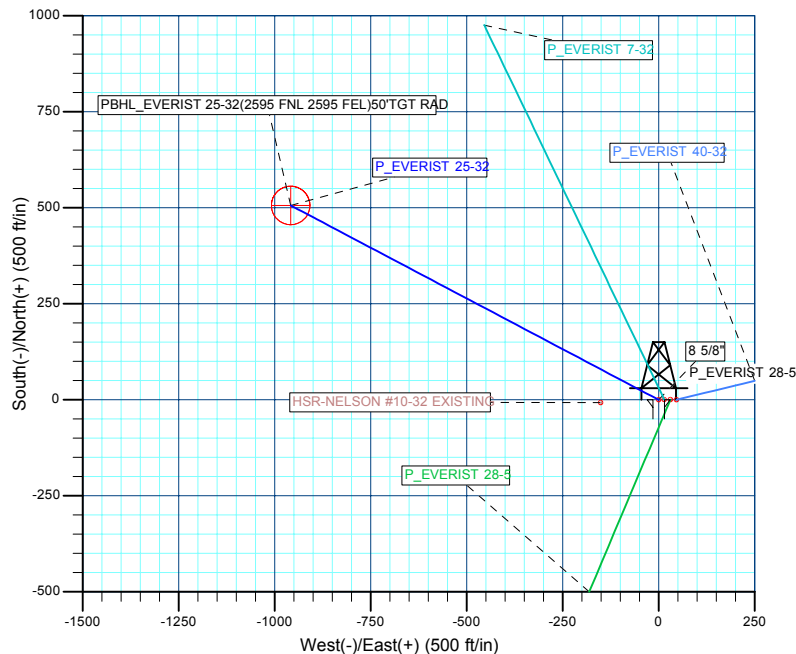
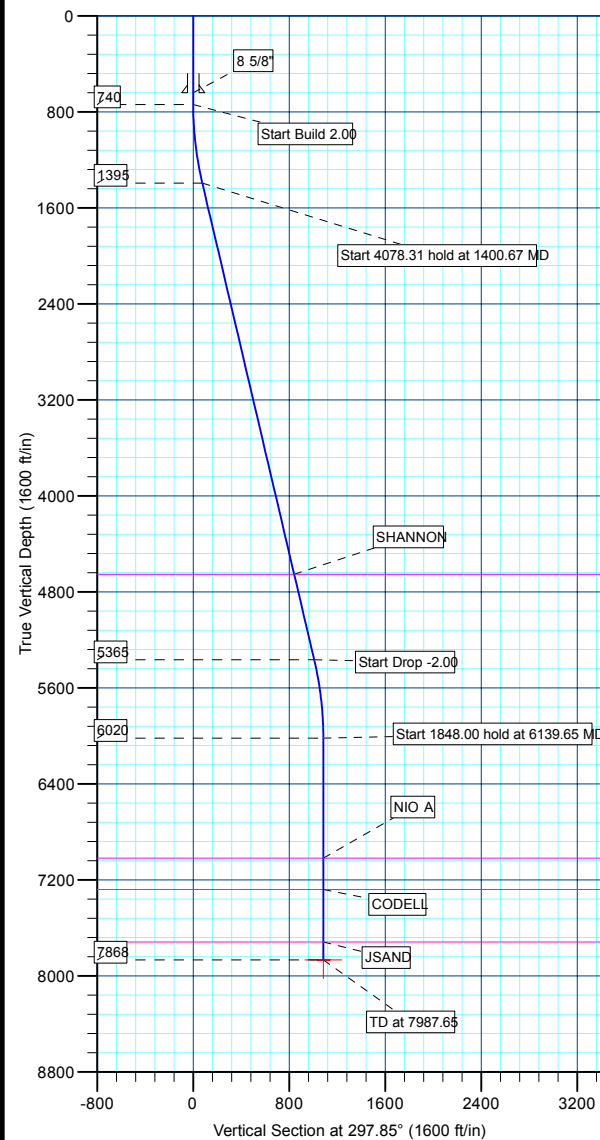
TVD	MD	Name	Size
640.00	640.00	8 5/8"	8.62

#### WELLBORE TARGET DETAILS (MAP CO-ORDINATES AND LAT/LONG)

Name	TVD	+N/-S	+E/-W	Northing	Easting	Latitude	Longitude	Shape
PBHL	7868.00	506.37	-958.36	1309898.32	3163829.87	40° 10' 57.288 N	104° 54' 49.104 W	Circle (Radius: 50.00)



KB ELEV: WELL @ 4823.00ft (Original Well Elev)  
3RD ELEV: 4808.00



<b>Database:</b>	EDM 2003.21 Single User Db	<b>Local Co-ordinate Reference:</b>	Well P_EVERIST 25-32
<b>Company:</b>	US ROCKIES REGION PLANNING	<b>TVD Reference:</b>	WELL @ 4823.00ft (Original Well Elev)
<b>Project:</b>	COLORADO NORTHERN ZONE - 83	<b>MD Reference:</b>	WELL @ 4823.00ft (Original Well Elev)
<b>Site:</b>	WELD_EVERIST 4 PAD	<b>North Reference:</b>	True
<b>Well:</b>	P_EVERIST 25-32	<b>Survey Calculation Method:</b>	Minimum Curvature
<b>Wellbore:</b>	P_EVERIST 25-32		
<b>Design:</b>	PLAN #1 3-16-10 RHS		

<b>Project</b>	COLORADO NORTHERN ZONE - 83, KERR MCGEE OIL & GAS ONSHORE LP		
<b>Map System:</b>	US State Plane 1983	<b>System Datum:</b>	Mean Sea Level
<b>Geo Datum:</b>	North American Datum 1983		
<b>Map Zone:</b>	Colorado Northern Zone		

Site						WELD_EVERIST 4 PAD, SECTION 32 T3N R67W											
Site Position:						Northing:			1,309,398.33ft			Latitude:			40° 10' 52.284 N		
From:			Lat/Long			Easting:			3,164,791.57ft			Longitude:			104° 54' 36.756 W		
Position Uncertainty:			0.00 ft			Slot Radius:			in			Grid Convergence:			0.38 °		

Well	P_EVERIST 25-32					
Well Position	+N/-S	0.00 ft	Northing:	1,309,398.33 ft	Latitude:	40° 10' 52.284 N
	+E/-W	0.00 ft	Easting:	3,164,791.57 ft	Longitude:	104° 54' 36.756 W
Position Uncertainty		0.00 ft	Wellhead Elevation:	ft	Ground Level:	4,808.00 ft

<b>Wellbore</b>	P_EVERIST 25-32				
<b>Magnetics</b>	<b>Model Name</b>	<b>Sample Date</b>	<b>Declination (°)</b>	<b>Dip Angle (°)</b>	<b>Field Strength (nT)</b>
	IGRF2010	3/16/2010	9.09	66.89	53,132

<b>Design</b>	PLAN #1 3-16-10 RHS			
<b>Audit Notes:</b>				
<b>Version:</b>	<b>Phase:</b>	PLAN	<b>Tie On Depth:</b>	0.00
<b>Vertical Section:</b>	<b>Depth From (TVD) (ft)</b>	<b>+N/-S (ft)</b>	<b>+E/-W (ft)</b>	<b>Direction (°)</b>
	0.00	0.00	0.00	297.85

<b>Plan Sections</b>										
Measured Depth (ft)	Inclination (°)	Azimuth (°)	Vertical Depth (ft)	+N/-S (ft)	+E/-W (ft)	Dogleg Rate (°/100ft)	Build Rate (°/100ft)	Turn Rate (°/100ft)	TFO (°)	Target
0.00	0.00	0.00	0.00	0.00	0.00	0.00	0.00	0.00	0.00	
740.00	0.00	0.00	740.00	0.00	0.00	0.00	0.00	0.00	0.00	
1,400.67	13.21	297.85	1,394.83	35.43	-67.06	2.00	2.00	0.00	297.85	
5,478.98	13.21	297.85	5,365.17	470.94	-891.30	0.00	0.00	0.00	0.00	
6,139.65	0.00	0.00	6,020.00	506.37	-958.36	2.00	-2.00	0.00	180.00	
7,987.65	0.00	0.00	7,868.00	506.37	-958.36	0.00	0.00	0.00	0.00	PBHL_EVERIST 25

<b>Database:</b>	EDM 2003.21 Single User Db	<b>Local Co-ordinate Reference:</b>	Well P_EVERIST 25-32
<b>Company:</b>	US ROCKIES REGION PLANNING	<b>TVD Reference:</b>	WELL @ 4823.00ft (Original Well Elev)
<b>Project:</b>	COLORADO NORTHERN ZONE - 83	<b>MD Reference:</b>	WELL @ 4823.00ft (Original Well Elev)
<b>Site:</b>	WELD_EVERIST 4 PAD	<b>North Reference:</b>	True
<b>Well:</b>	P_EVERIST 25-32	<b>Survey Calculation Method:</b>	Minimum Curvature
<b>Wellbore:</b>	P_EVERIST 25-32		
<b>Design:</b>	PLAN #1 3-16-10 RHS		

Planned Survey									
Measured Depth (ft)	Inclination (°)	Azimuth (°)	Vertical Depth (ft)	+N/-S (ft)	+E/-W (ft)	Vertical Section (ft)	Dogleg Rate (°/100ft)	Build Rate (°/100ft)	Turn Rate (°/100ft)
<b>Start Build 2.00</b>									
740.00	0.00	0.00	740.00	0.00	0.00	0.00	0.00	0.00	0.00
800.00	1.20	297.85	800.00	0.29	-0.56	0.63	2.00	2.00	0.00
900.00	3.20	297.85	899.92	2.09	-3.95	4.47	2.00	2.00	0.00
1,000.00	5.20	297.85	999.64	5.51	-10.42	11.79	2.00	2.00	0.00
1,100.00	7.20	297.85	1,099.05	10.55	-19.97	22.59	2.00	2.00	0.00
1,200.00	9.20	297.85	1,198.03	17.22	-32.58	36.85	2.00	2.00	0.00
1,300.00	11.20	297.85	1,296.44	25.49	-48.24	54.56	2.00	2.00	0.00
1,400.00	13.20	297.85	1,394.18	35.36	-66.92	75.69	2.00	2.00	0.00
<b>Start 4078.31 hold at 1400.67 MD</b>									
1,400.67	13.21	297.85	1,394.83	35.43	-67.06	75.84	2.00	2.00	0.00
1,500.00	13.21	297.85	1,491.53	46.04	-87.13	98.55	0.00	0.00	0.00
1,600.00	13.21	297.85	1,588.88	56.72	-107.34	121.41	0.00	0.00	0.00
1,700.00	13.21	297.85	1,686.23	67.40	-127.55	144.26	0.00	0.00	0.00
1,800.00	13.21	297.85	1,783.59	78.08	-147.76	167.12	0.00	0.00	0.00
1,900.00	13.21	297.85	1,880.94	88.75	-167.97	189.98	0.00	0.00	0.00
2,000.00	13.21	297.85	1,978.29	99.43	-188.18	212.84	0.00	0.00	0.00
2,100.00	13.21	297.85	2,075.64	110.11	-208.40	235.70	0.00	0.00	0.00
2,200.00	13.21	297.85	2,173.00	120.79	-228.61	258.55	0.00	0.00	0.00
2,300.00	13.21	297.85	2,270.35	131.47	-248.82	281.41	0.00	0.00	0.00
2,400.00	13.21	297.85	2,367.70	142.15	-269.03	304.27	0.00	0.00	0.00
2,500.00	13.21	297.85	2,465.05	152.83	-289.24	327.13	0.00	0.00	0.00
2,600.00	13.21	297.85	2,562.41	163.50	-309.45	349.99	0.00	0.00	0.00
2,700.00	13.21	297.85	2,659.76	174.18	-329.66	372.84	0.00	0.00	0.00
2,800.00	13.21	297.85	2,757.11	184.86	-349.87	395.70	0.00	0.00	0.00
2,900.00	13.21	297.85	2,854.46	195.54	-370.08	418.56	0.00	0.00	0.00
3,000.00	13.21	297.85	2,951.82	206.22	-390.29	441.42	0.00	0.00	0.00
3,100.00	13.21	297.85	3,049.17	216.90	-410.50	464.28	0.00	0.00	0.00
3,200.00	13.21	297.85	3,146.52	227.58	-430.71	487.13	0.00	0.00	0.00
3,300.00	13.21	297.85	3,243.87	238.25	-450.92	509.99	0.00	0.00	0.00
3,400.00	13.21	297.85	3,341.23	248.93	-471.13	532.85	0.00	0.00	0.00
3,500.00	13.21	297.85	3,438.58	259.61	-491.34	555.71	0.00	0.00	0.00
3,600.00	13.21	297.85	3,535.93	270.29	-511.55	578.57	0.00	0.00	0.00
3,700.00	13.21	297.85	3,633.28	280.97	-531.76	601.42	0.00	0.00	0.00
3,800.00	13.21	297.85	3,730.64	291.65	-551.97	624.28	0.00	0.00	0.00
3,900.00	13.21	297.85	3,827.99	302.33	-572.18	647.14	0.00	0.00	0.00
4,000.00	13.21	297.85	3,925.34	313.00	-592.39	670.00	0.00	0.00	0.00
4,100.00	13.21	297.85	4,022.69	323.68	-612.60	692.86	0.00	0.00	0.00
4,200.00	13.21	297.85	4,120.05	334.36	-632.81	715.71	0.00	0.00	0.00
4,300.00	13.21	297.85	4,217.40	345.04	-653.02	738.57	0.00	0.00	0.00
4,400.00	13.21	297.85	4,314.75	355.72	-673.23	761.43	0.00	0.00	0.00
4,500.00	13.21	297.85	4,412.10	366.40	-693.44	784.29	0.00	0.00	0.00
4,600.00	13.21	297.85	4,509.46	377.08	-713.65	807.15	0.00	0.00	0.00
4,700.00	13.21	297.85	4,606.81	387.75	-733.86	830.00	0.00	0.00	0.00
<b>SHANNON</b>									
4,747.45	13.21	297.85	4,653.00	392.82	-743.45	840.85	0.00	0.00	0.00
4,800.00	13.21	297.85	4,704.16	398.43	-754.07	852.86	0.00	0.00	0.00
4,900.00	13.21	297.85	4,801.52	409.11	-774.28	875.72	0.00	0.00	0.00
5,000.00	13.21	297.85	4,898.87	419.79	-794.49	898.58	0.00	0.00	0.00
5,100.00	13.21	297.85	4,996.22	430.47	-814.70	921.44	0.00	0.00	0.00
5,200.00	13.21	297.85	5,093.57	441.15	-834.91	944.29	0.00	0.00	0.00
5,300.00	13.21	297.85	5,190.93	451.83	-855.12	967.15	0.00	0.00	0.00
5,400.00	13.21	297.85	5,288.28	462.51	-875.33	990.01	0.00	0.00	0.00

<b>Database:</b>	EDM 2003.21 Single User Db	<b>Local Co-ordinate Reference:</b>	Well P_EVERIST 25-32
<b>Company:</b>	US ROCKIES REGION PLANNING	<b>TVD Reference:</b>	WELL @ 4823.00ft (Original Well Elev)
<b>Project:</b>	COLORADO NORTHERN ZONE - 83	<b>MD Reference:</b>	WELL @ 4823.00ft (Original Well Elev)
<b>Site:</b>	WELD_EVERIST 4 PAD	<b>North Reference:</b>	True
<b>Well:</b>	P_EVERIST 25-32	<b>Survey Calculation Method:</b>	Minimum Curvature
<b>Wellbore:</b>	P_EVERIST 25-32		
<b>Design:</b>	PLAN #1 3-16-10 RHS		

#### Planned Survey

Measured Depth (ft)	Inclination (°)	Azimuth (°)	Vertical Depth (ft)	+N/-S (ft)	+E/-W (ft)	Vertical Section (ft)	Dogleg Rate (°/100ft)	Build Rate (°/100ft)	Turn Rate (°/100ft)
<b>Start Drop -2.00</b>									
5,478.98	13.21	297.85	5,365.17	470.94	-891.30	1,008.06	0.00	0.00	0.00
5,500.00	12.79	297.85	5,385.65	473.15	-895.48	1,012.79	2.00	-2.00	0.00
5,600.00	10.79	297.85	5,483.53	482.70	-913.55	1,033.23	2.00	-2.00	0.00
5,700.00	8.79	297.85	5,582.07	490.64	-928.59	1,050.24	2.00	-2.00	0.00
5,800.00	6.79	297.85	5,681.14	496.98	-940.57	1,063.80	2.00	-2.00	0.00
5,900.00	4.79	297.85	5,780.63	501.69	-949.50	1,073.89	2.00	-2.00	0.00
6,000.00	2.79	297.85	5,880.40	504.78	-955.35	1,080.51	2.00	-2.00	0.00
6,100.00	0.79	297.85	5,980.35	506.24	-958.11	1,083.63	2.00	-2.00	0.00
<b>Start 1848.00 hold at 6139.65 MD</b>									
6,139.65	0.00	0.00	6,020.00	506.37	-958.36	1,083.91	2.00	-2.00	0.00
6,200.00	0.00	0.00	6,080.35	506.37	-958.36	1,083.91	0.00	0.00	0.00
6,300.00	0.00	0.00	6,180.35	506.37	-958.36	1,083.91	0.00	0.00	0.00
6,400.00	0.00	0.00	6,280.35	506.37	-958.36	1,083.91	0.00	0.00	0.00
6,500.00	0.00	0.00	6,380.35	506.37	-958.36	1,083.91	0.00	0.00	0.00
6,600.00	0.00	0.00	6,480.35	506.37	-958.36	1,083.91	0.00	0.00	0.00
6,700.00	0.00	0.00	6,580.35	506.37	-958.36	1,083.91	0.00	0.00	0.00
6,800.00	0.00	0.00	6,680.35	506.37	-958.36	1,083.91	0.00	0.00	0.00
6,900.00	0.00	0.00	6,780.35	506.37	-958.36	1,083.91	0.00	0.00	0.00
7,000.00	0.00	0.00	6,880.35	506.37	-958.36	1,083.91	0.00	0.00	0.00
7,100.00	0.00	0.00	6,980.35	506.37	-958.36	1,083.91	0.00	0.00	0.00
<b>NIO A</b>									
7,139.65	0.00	0.00	7,020.00	506.37	-958.36	1,083.91	0.00	0.00	0.00
7,200.00	0.00	0.00	7,080.35	506.37	-958.36	1,083.91	0.00	0.00	0.00
7,300.00	0.00	0.00	7,180.35	506.37	-958.36	1,083.91	0.00	0.00	0.00
<b>CODELL</b>									
7,399.65	0.00	0.00	7,280.00	506.37	-958.36	1,083.91	0.00	0.00	0.00
7,400.00	0.00	0.00	7,280.35	506.37	-958.36	1,083.91	0.00	0.00	0.00
7,500.00	0.00	0.00	7,380.35	506.37	-958.36	1,083.91	0.00	0.00	0.00
7,600.00	0.00	0.00	7,480.35	506.37	-958.36	1,083.91	0.00	0.00	0.00
7,700.00	0.00	0.00	7,580.35	506.37	-958.36	1,083.91	0.00	0.00	0.00
7,800.00	0.00	0.00	7,680.35	506.37	-958.36	1,083.91	0.00	0.00	0.00
<b>JSAND</b>									
7,837.65	0.00	0.00	7,718.00	506.37	-958.36	1,083.91	0.00	0.00	0.00
7,900.00	0.00	0.00	7,780.35	506.37	-958.36	1,083.91	0.00	0.00	0.00
<b>PBHL_EVERIST 25-32(2595 FNL 2595 FEL)50'TGT RAD</b>									
7,987.65	0.00	0.00	7,868.00	506.37	-958.36	1,083.91	0.00	0.00	0.00

#### Design Targets

Target Name	Dip Angle (°)	Dip Dir. (°)	TVD (ft)	+N/-S (ft)	+E/-W (ft)	Northing (ft)	Easting (ft)	Latitude	Longitude
- hit/miss target									
- Shape									
PBHL_EVERIST 25-3	0.00	0.00	7,868.00	506.37	-958.36	1,309,898.32	3,163,829.87	40° 10' 57.288 N	104° 54' 49.104 W
- plan hits target center									
- Circle (radius 50.00)									

<b>Database:</b>	EDM 2003.21 Single User Db	<b>Local Co-ordinate Reference:</b>	Well P_EVERIST 25-32
<b>Company:</b>	US ROCKIES REGION PLANNING	<b>TVD Reference:</b>	WELL @ 4823.00ft (Original Well Elev)
<b>Project:</b>	COLORADO NORTHERN ZONE - 83	<b>MD Reference:</b>	WELL @ 4823.00ft (Original Well Elev)
<b>Site:</b>	WELD_EVERIST 4 PAD	<b>North Reference:</b>	True
<b>Well:</b>	P_EVERIST 25-32	<b>Survey Calculation Method:</b>	Minimum Curvature
<b>Wellbore:</b>	P_EVERIST 25-32		
<b>Design:</b>	PLAN #1 3-16-10 RHS		

Casing Points					
Measured Depth (ft)	Vertical Depth (ft)	Name	Casing Diameter (in)	Hole Diameter (in)	
640.00	640.00	8 5/8"	8.62	11.00	

Formations					
Measured Depth (ft)	Vertical Depth (ft)	Name	Lithology	Dip (°)	Dip Direction (°)
4,747.45	4,653.00	SHANNON		0.00	
7,139.65	7,020.00	NIO A		0.00	
7,399.65	7,280.00	CODELL		0.00	
7,837.65	7,718.00	JSAND		0.00	

Plan Annotations				
Measured Depth (ft)	Vertical Depth (ft)	Local Coordinates		Comment
		+N/-S (ft)	+E/-W (ft)	
740.00	740.00	0.00	0.00	Start Build 2.00
1,400.67	1,394.83	35.43	-67.06	Start 4078.31 hold at 1400.67 MD
5,478.98	5,365.17	470.94	-891.30	Start Drop -2.00
6,139.65	6,020.00	506.37	-958.36	Start 1848.00 hold at 6139.65 MD
7,987.65	7,868.00	506.37	-958.36	TD at 7987.65



# **US ROCKIES REGION PLANNING**

**COLORADO NORTHERN ZONE - 83  
WELD\_EVERIST 4 PAD  
P\_EVERIST 25-32**

**P\_EVERIST 25-32  
PLAN #1 3-16-10 RHS**

## **Anticollision Report**

**16 March, 2010**



<b>Company:</b>	US ROCKIES REGION PLANNING	<b>Local Co-ordinate Reference:</b>	Well P_EVERIST 25-32
<b>Project:</b>	COLORADO NORTHERN ZONE - 83	<b>TVD Reference:</b>	WELL @ 4823.00ft (Original Well Elev)
<b>Reference Site:</b>	WELD_EVERIST 4 PAD	<b>MD Reference:</b>	WELL @ 4823.00ft (Original Well Elev)
<b>Site Error:</b>	0.00ft	<b>North Reference:</b>	True
<b>Reference Well:</b>	P_EVERIST 25-32	<b>Survey Calculation Method:</b>	Minimum Curvature
<b>Well Error:</b>	0.00ft	<b>Output errors are at</b>	2.00 sigma
<b>Reference Wellbore</b>	P_EVERIST 25-32	<b>Database:</b>	EDM 2003.21 Single User Db
<b>Reference Design:</b>	PLAN #1 3-16-10 RHS	<b>Offset TVD Reference:</b>	Offset Datum

<b>Reference</b>	PLAN #1 3-16-10 RHS		
<b>Filter type:</b>	NO GLOBAL FILTER: Using user defined selection & filtering criteria		
<b>Interpolation Method:</b>	Stations	<b>Error Model:</b>	ISCWSA
<b>Depth Range:</b>	0.00 to 20,000.00ft	<b>Scan Method:</b>	Closest Approach 3D
<b>Results Limited by:</b>	Maximum center-center distance of 10,000.00ft	<b>Error Surface:</b>	Elliptical Conic
<b>Warning Levels Evaluated at:</b>	2.00 Sigma		

<b>Survey Tool Program</b>	<b>Date</b> 3/16/2010			
<b>From (ft)</b>	<b>To (ft)</b>	<b>Survey (Wellbore)</b>	<b>Tool Name</b>	<b>Description</b>
0.00	7,987.65	PLAN #1 3-16-10 RHS (P_EVERIST 25-32)	MWD	MWD - Standard

<b>Summary</b>						
<b>Site Name</b>	<b>Reference Measured Depth (ft)</b>	<b>Offset Measured Depth (ft)</b>	<b>Distance Between Centres (ft)</b>	<b>Distance Between Ellipses (ft)</b>	<b>Separation Factor</b>	<b>Warning</b>
<b>Offset Well - Wellbore - Design</b>						
WELD_EVERIST 4 PAD						
HSR-NELSON #10-32 EXISTING - HSR-NELSON #10-32	1,637.56	1,625.44	76.95	9.80	1.146	Level 2, CC
HSR-NELSON #10-32 EXISTING - HSR-NELSON #10-32	1,700.00	1,686.23	78.26	8.47	1.121	Level 2, ES, SF
P_EVERIST 28-5 - P_EVERIST 28-5 - PLAN #1 3-16-10	568.73	569.13	28.03	25.79	12.538	CC, ES
P_EVERIST 28-5 - P_EVERIST 28-5 - PLAN #1 3-16-10	700.00	699.17	31.92	29.12	11.389	SF
P_EVERIST 40-32 - P_EVERIST 40-32 - PLAN #1 3-16-10	740.00	740.00	46.66	43.59	15.209	CC, ES
P_EVERIST 40-32 - P_EVERIST 40-32 - PLAN #1 3-16-10	800.00	799.04	47.82	44.49	14.386	SF
P_EVERIST 7-32 - P_EVERIST 7-32 - PLAN #1 3-16-10	740.00	740.00	14.83	11.76	4.832	CC, ES
P_EVERIST 7-32 - P_EVERIST 7-32 - PLAN #1 3-16-10	900.00	900.27	17.03	13.27	4.525	SF

Offset Design										WELD_EVERIST 4 PAD - HSR-NELSON #10-32 EXISTING - HSR-NELSON #10-32 EXISTING - HSR-I				Offset Site Error:		0.00 ft	
Survey Program: 0-UNKNOWN												Offset Well Error:		0.00 ft			
Reference		Offset		Semi Major Axis			Distance										
Measured Depth	Vertical Depth	Measured Depth	Vertical Depth	Reference	Offset	Highside Toolface	Offset Wellbore Centre		Between Centres	Between Ellipses	Minimum Separation	Separation Factor	Warning				
(ft)	(ft)	(ft)	(ft)	(ft)	(ft)	(°)	+N/-S (ft)	+E/-W (ft)	(ft)	(ft)	(ft)						
0.00	0.00	0.00	0.00	0.00	0.00	-92.77	-7.31	-150.88	151.06								
100.00	100.00	100.00	100.00	0.10	1.70	-92.77	-7.31	-150.88	151.06	149.26	1.80	84.130					
200.00	200.00	200.00	200.00	0.32	5.70	-92.77	-7.31	-150.88	151.06	145.04	6.02	25.091					
300.00	300.00	300.00	300.00	0.55	9.70	-92.77	-7.31	-150.88	151.06	140.81	10.25	14.744					
400.00	400.00	400.00	400.00	0.77	13.70	-92.77	-7.31	-150.88	151.06	136.59	14.47	10.440					
500.00	500.00	500.00	500.00	0.99	17.70	-92.77	-7.31	-150.88	151.06	132.36	18.69	8.080					
600.00	600.00	600.00	600.00	1.22	21.70	-92.77	-7.31	-150.88	151.06	128.14	22.92	6.591					
700.00	700.00	700.00	700.00	1.44	25.70	-92.77	-7.31	-150.88	151.06	123.91	27.14	5.565					
740.00	740.00	740.00	740.00	1.53	27.30	-92.77	-7.31	-150.88	151.06	122.22	28.83	5.239					
800.00	800.00	800.00	800.00	1.66	29.70	-30.75	-7.31	-150.88	150.52	119.16	31.36	4.800					
900.00	899.92	899.92	899.92	1.88	33.70	-31.55	-7.31	-150.88	147.23	111.70	35.53	4.144					
1,000.00	999.64	999.64	999.64	2.11	37.69	-33.17	-7.31	-150.88	141.04	101.37	39.67	3.556					
1,100.00	1,099.05	1,099.05	1,099.05	2.35	41.66	-35.83	-7.31	-150.88	132.12	88.36	43.76	3.019					
1,200.00	1,198.03	1,198.03	1,198.03	2.63	45.62	-39.93	-7.31	-150.88	120.81	72.99	47.83	2.526					
1,300.00	1,296.44	1,296.44	1,296.44	2.94	49.56	-46.12	-7.31	-150.88	107.75	55.81	51.94	2.075					
1,400.67	1,394.83	1,394.83	1,394.83	3.30	53.49	-55.59	-7.31	-150.88	94.09	37.84	56.25	1.673					
1,500.00	1,491.53	1,491.53	1,491.53	3.70	57.36	-68.31	-7.31	-150.88	83.12	22.28	60.84	1.366	Level 3				
1,600.00	1,588.88	1,588.88	1,588.88	4.12	61.26	-83.80	-7.31	-150.88	77.42	11.97	65.46	1.183	Level 2				
1,637.56	1,625.44	1,625.44	1,625.44	4.28	62.72	-90.00	-7.31	-150.88	76.95	9.80	67.15	1.146	Level 2, CC				
1,700.00	1,686.23	1,686.23	1,686.23	4.55	65.15	-100.24	-7.31	-150.88	78.26	8.47	69.79	1.121	Level 2, ES, SF				

CC - Min centre to center distance or convergent point, SF - min separation factor, ES - min ellipse separation



<b>Company:</b>	US ROCKIES REGION PLANNING	<b>Local Co-ordinate Reference:</b>	Well P_EVERIST 25-32
<b>Project:</b>	COLORADO NORTHERN ZONE - 83	<b>TVD Reference:</b>	WELL @ 4823.00ft (Original Well Elev)
<b>Reference Site:</b>	WELD_EVERIST 4 PAD	<b>MD Reference:</b>	WELL @ 4823.00ft (Original Well Elev)
<b>Site Error:</b>	0.00ft	<b>North Reference:</b>	True
<b>Reference Well:</b>	P_EVERIST 25-32	<b>Survey Calculation Method:</b>	Minimum Curvature
<b>Well Error:</b>	0.00ft	<b>Output errors are at</b>	2.00 sigma
<b>Reference Wellbore</b>	P_EVERIST 25-32	<b>Database:</b>	EDM 2003.21 Single User Db
<b>Reference Design:</b>	PLAN #1 3-16-10 RHS	<b>Offset TVD Reference:</b>	Offset Datum

Offset Design												Offset Site Error:	0.00 ft
Survey Program: 0-UNKNOWN												Offset Well Error:	0.00 ft
Reference	Offset	Semi Major Axis		Distance									
Measured Depth (ft)	Vertical Depth (ft)	Measured Depth (ft)	Vertical Depth (ft)	Reference (ft)	Offset (ft)	Highside Toolface (°)	Offset Wellbore Centre +N/-S (ft)	+E/-W (ft)	Between Centres (ft)	Between Ellipses (ft)	Minimum Separation (ft)	Separation Factor	Warning
1,800.00	1,783.59	1,783.59	1,783.59	5.00	69.04	-115.16	-7.31	-150.88	85.44	11.69	73.75	1.158	Level 2
1,900.00	1,880.94	1,880.94	1,880.94	5.45	72.94	-127.20	-7.31	-150.88	97.57	20.06	77.51	1.259	Level 3
2,000.00	1,978.29	1,978.29	1,978.29	5.91	76.83	-136.35	-7.31	-150.88	113.07	31.84	81.23	1.392	Level 3
2,100.00	2,075.64	2,075.64	2,075.64	6.38	80.73	-143.21	-7.31	-150.88	130.75	45.75	85.00	1.538	
2,200.00	2,173.00	2,173.00	2,173.00	6.85	84.62	-148.42	-7.31	-150.88	149.83	61.01	88.82	1.687	
2,300.00	2,270.35	2,270.35	2,270.35	7.32	88.51	-152.44	-7.31	-150.88	169.85	77.15	92.70	1.832	
2,400.00	2,367.70	2,367.70	2,367.70	7.79	92.41	-155.60	-7.31	-150.88	190.51	93.89	96.62	1.972	
2,500.00	2,465.05	2,465.05	2,465.05	8.27	96.30	-158.15	-7.31	-150.88	211.62	111.06	100.56	2.104	
2,600.00	2,562.41	2,562.41	2,562.41	8.74	100.20	-160.24	-7.31	-150.88	233.06	128.53	104.53	2.230	
2,700.00	2,659.76	2,659.76	2,659.76	9.22	104.09	-161.97	-7.31	-150.88	254.75	146.23	108.52	2.348	
2,800.00	2,757.11	2,757.11	2,757.11	9.70	107.98	-163.43	-7.31	-150.88	276.63	164.11	112.52	2.458	
2,900.00	2,854.46	2,854.46	2,854.46	10.19	111.88	-164.68	-7.31	-150.88	298.65	182.12	116.53	2.563	
3,000.00	2,951.82	2,951.82	2,951.82	10.67	115.77	-165.76	-7.31	-150.88	320.79	200.24	120.55	2.661	
3,100.00	3,049.17	3,049.17	3,049.17	11.15	119.67	-166.70	-7.31	-150.88	343.03	218.45	124.58	2.754	
3,200.00	3,146.52	3,146.52	3,146.52	11.64	123.56	-167.52	-7.31	-150.88	365.34	236.73	128.61	2.841	
3,300.00	3,243.87	3,243.87	3,243.87	12.12	127.45	-168.25	-7.31	-150.88	387.71	255.07	132.64	2.923	
3,400.00	3,341.23	3,341.23	3,341.23	12.61	131.35	-168.90	-7.31	-150.88	410.14	273.46	136.68	3.001	
3,500.00	3,438.58	3,438.58	3,438.58	13.09	135.24	-169.48	-7.31	-150.88	432.62	291.89	140.72	3.074	
3,600.00	3,535.93	3,535.93	3,535.93	13.58	139.14	-170.01	-7.31	-150.88	455.13	310.36	144.77	3.144	
3,700.00	3,633.28	3,633.28	3,633.28	14.07	143.03	-170.48	-7.31	-150.88	477.67	328.85	148.82	3.210	
3,800.00	3,730.64	3,730.64	3,730.64	14.55	146.93	-170.92	-7.31	-150.88	500.25	347.38	152.87	3.272	
3,900.00	3,827.99	3,827.99	3,827.99	15.04	150.82	-171.31	-7.31	-150.88	522.84	365.93	156.92	3.332	
4,000.00	3,925.34	3,925.34	3,925.34	15.53	154.71	-171.67	-7.31	-150.88	545.46	384.49	160.97	3.389	
4,100.00	4,022.69	4,022.69	4,022.69	16.02	158.61	-172.01	-7.31	-150.88	568.10	403.08	165.02	3.443	
4,200.00	4,120.05	4,120.05	4,120.05	16.51	162.50	-172.31	-7.31	-150.88	590.76	421.68	169.08	3.494	
4,300.00	4,217.40	4,217.40	4,217.40	16.99	166.40	-172.60	-7.31	-150.88	613.43	440.29	173.13	3.543	
4,400.00	4,314.75	4,314.75	4,314.75	17.48	170.29	-172.87	-7.31	-150.88	636.11	458.92	177.19	3.590	
4,500.00	4,412.10	4,412.10	4,412.10	17.97	174.18	-173.11	-7.31	-150.88	658.81	477.56	181.25	3.635	
4,600.00	4,509.46	4,509.46	4,509.46	18.46	178.08	-173.34	-7.31	-150.88	681.51	496.21	185.31	3.678	
4,700.00	4,606.81	4,606.81	4,606.81	18.95	181.97	-173.56	-7.31	-150.88	704.23	514.86	189.37	3.719	
4,800.00	4,704.16	4,704.16	4,704.16	19.44	185.87	-173.76	-7.31	-150.88	726.96	533.53	193.43	3.758	
4,900.00	4,801.52	4,801.52	4,801.52	19.93	189.76	-173.95	-7.31	-150.88	749.69	552.20	197.49	3.796	
5,000.00	4,898.87	4,898.87	4,898.87	20.42	193.65	-174.13	-7.31	-150.88	772.43	570.88	201.55	3.833	
5,100.00	4,996.22	4,996.22	4,996.22	20.91	197.55	-174.30	-7.31	-150.88	795.18	589.57	205.61	3.867	
5,200.00	5,093.57	5,093.57	5,093.57	21.40	201.44	-174.46	-7.31	-150.88	817.93	608.26	209.67	3.901	
5,300.00	5,190.93	5,190.93	5,190.93	21.89	205.34	-174.61	-7.31	-150.88	840.69	626.96	213.73	3.933	
5,400.00	5,288.28	5,288.28	5,288.28	22.38	209.23	-174.75	-7.31	-150.88	863.46	645.66	217.79	3.965	
5,478.98	5,365.17	5,365.17	5,365.17	22.76	212.31	-174.86	-7.31	-150.88	881.44	660.44	221.00	3.988	
5,500.00	5,385.65	5,385.65	5,385.65	22.85	213.13	-174.89	-7.31	-150.88	886.15	663.98	222.17	3.989	
5,600.00	5,483.53	5,483.53	5,483.53	23.20	217.04	-175.04	-7.31	-150.88	906.51	678.88	227.63	3.982	
5,700.00	5,582.07	5,582.07	5,582.07	23.50	220.98	-175.16	-7.31	-150.88	923.46	690.47	232.99	3.963	
5,800.00	5,681.14	5,681.14	5,681.14	23.76	224.95	-175.26	-7.31	-150.88	936.97	698.84	238.13	3.935	
5,900.00	5,780.63	5,780.63	5,780.63	23.98	228.93	-175.32	-7.31	-150.88	947.03	704.01	243.02	3.897	
6,000.00	5,880.40	5,880.40	5,880.40	24.16	232.92	-175.37	-7.31	-150.88	953.62	705.99	247.63	3.851	
6,100.00	5,980.35	5,980.35	5,980.35	24.29	236.91	-175.39	-7.31	-150.88	956.74	704.78	251.96	3.797	
6,139.65	6,020.00	6,020.00	6,020.00	24.33	238.50	122.46	-7.31	-150.88	957.02	703.42	253.60	3.774	
6,200.00	6,080.35	6,080.35	6,080.35	24.40	240.91	122.46	-7.31	-150.88	957.02	700.90	256.11	3.737	
6,300.00	6,180.35	6,180.35	6,180.35	24.52	244.91	122.46	-7.31	-150.88	957.02	696.72	260.30	3.677	
6,400.00	6,280.35	6,280.35	6,280.35	24.64	248.91	122.46	-7.31	-150.88	957.02	692.54	264.48	3.618	
6,500.00	6,380.35	6,380.35	6,380.35	24.76	252.91	122.46	-7.31	-150.88	957.02	688.35	268.67	3.562	
6,600.00	6,480.35	6,480.35	6,480.35	24.89	256.91	122.46	-7.31	-150.88	957.02	684.17	272.85	3.507	
6,700.00	6,580.35	6,580.35	6,580.35	25.01	260.91	122.46	-7.31	-150.88	957.02	679.98	277.04	3.454	

CC - Min centre to center distance or convergent point, SF - min separation factor, ES - min ellipse separation

<b>Company:</b>	US ROCKIES REGION PLANNING	<b>Local Co-ordinate Reference:</b>	Well P_EVERIST 25-32
<b>Project:</b>	COLORADO NORTHERN ZONE - 83	<b>TVD Reference:</b>	WELL @ 4823.00ft (Original Well Elev)
<b>Reference Site:</b>	WELD_EVERIST 4 PAD	<b>MD Reference:</b>	WELL @ 4823.00ft (Original Well Elev)
<b>Site Error:</b>	0.00ft	<b>North Reference:</b>	True
<b>Reference Well:</b>	P_EVERIST 25-32	<b>Survey Calculation Method:</b>	Minimum Curvature
<b>Well Error:</b>	0.00ft	<b>Output errors are at</b>	2.00 sigma
<b>Reference Wellbore</b>	P_EVERIST 25-32	<b>Database:</b>	EDM 2003.21 Single User Db
<b>Reference Design:</b>	PLAN #1 3-16-10 RHS	<b>Offset TVD Reference:</b>	Offset Datum

<b>Offset Design</b> WELD_EVERIST 4 PAD - HSR-NELSON #10-32 EXISTING - HSR-NELSON #10-32 EXISTING - HSR-												<b>Offset Site Error:</b>	0.00 ft
Survey Program: 0-UNKNOWN												<b>Offset Well Error:</b>	0.00 ft
Reference	Offset	Semi Major Axis		Distance									
Measured Depth (ft)	Vertical Depth (ft)	Measured Depth (ft)	Vertical Depth (ft)	Reference (ft)	Offset (ft)	Highside Toolface (°)	Offset Wellbore Centre +N/-S (ft)	+E/-W (ft)	Between Centres (ft)	Between Ellipses (ft)	Minimum Separation (ft)	Separation Factor	Warning
6,800.00	6,680.35	6,680.35	6,680.35	25.14	264.91	122.46	-7.31	-150.88	957.02	675.79	281.23	3.403	
6,900.00	6,780.35	6,780.35	6,780.35	25.27	268.91	122.46	-7.31	-150.88	957.02	671.60	285.41	3.353	
7,000.00	6,880.35	6,880.35	6,880.35	25.40	272.91	122.46	-7.31	-150.88	957.02	667.41	289.60	3.305	
7,100.00	6,980.35	6,980.35	6,980.35	25.53	276.91	122.46	-7.31	-150.88	957.02	663.22	293.79	3.257	
7,200.00	7,080.35	7,080.35	7,080.35	25.66	280.91	122.46	-7.31	-150.88	957.02	659.03	297.98	3.212	
7,300.00	7,180.35	7,180.35	7,180.35	25.80	284.91	122.46	-7.31	-150.88	957.02	654.84	302.18	3.167	
7,400.00	7,280.35	7,280.35	7,280.35	25.93	288.91	122.46	-7.31	-150.88	957.02	650.65	306.37	3.124	
7,500.00	7,380.35	7,380.35	7,380.35	26.07	292.91	122.46	-7.31	-150.88	957.02	646.45	310.56	3.082	
7,600.00	7,480.35	7,480.35	7,480.35	26.20	296.91	122.46	-7.31	-150.88	957.02	642.26	314.76	3.040	
7,700.00	7,580.35	7,580.35	7,580.35	26.34	300.91	122.46	-7.31	-150.88	957.02	638.06	318.95	3.000	
7,800.00	7,680.35	7,680.35	7,680.35	26.48	304.91	122.46	-7.31	-150.88	957.02	633.87	323.15	2.962	
7,900.00	7,780.35	7,780.35	7,780.35	26.62	308.91	122.46	-7.31	-150.88	957.02	629.67	327.34	2.924	
7,987.65	7,868.00	7,868.00	7,868.00	26.75	312.42	122.46	-7.31	-150.88	957.02	625.99	331.02	2.891	

<b>Company:</b>	US ROCKIES REGION PLANNING	<b>Local Co-ordinate Reference:</b>	Well P_EVERIST 25-32
<b>Project:</b>	COLORADO NORTHERN ZONE - 83	<b>TVD Reference:</b>	WELL @ 4823.00ft (Original Well Elev)
<b>Reference Site:</b>	WELD_EVERIST 4 PAD	<b>MD Reference:</b>	WELL @ 4823.00ft (Original Well Elev)
<b>Site Error:</b>	0.00ft	<b>North Reference:</b>	True
<b>Reference Well:</b>	P_EVERIST 25-32	<b>Survey Calculation Method:</b>	Minimum Curvature
<b>Well Error:</b>	0.00ft	<b>Output errors are at</b>	2.00 sigma
<b>Reference Wellbore</b>	P_EVERIST 25-32	<b>Database:</b>	EDM 2003.21 Single User Db
<b>Reference Design:</b>	PLAN #1 3-16-10 RHS	<b>Offset TVD Reference:</b>	Offset Datum

Offset Design WELD_EVERIST 4 PAD - P_EVERIST 28-5 - P_EVERIST 28-5 - PLAN #1 3-16-10 RHS												Offset Site Error:	0.00 ft
Survey Program: 0-MWD												Offset Well Error:	0.00 ft
Measured Depth (ft)	Vertical Depth (ft)	Measured Depth (ft)	Vertical Depth (ft)	Reference (ft)	Offset (ft)	Highside Toolface (°)	Offset Wellbore Centre +N/-S (ft)	+E/-W (ft)	Between Centres (ft)	Between Ellipses (ft)	Minimum Separation (ft)	Separation Factor	Warning
0.00	0.00	0.00	0.00	0.00	0.00	88.66	0.72	30.74	30.74				
100.00	100.00	100.00	100.00	0.10	0.10	88.66	0.72	30.74	30.74	30.55	0.19	160.918	
200.00	200.00	200.00	200.00	0.32	0.32	88.66	0.72	30.74	30.74	30.10	0.64	47.993	
300.00	300.00	300.00	300.00	0.55	0.55	88.66	0.72	30.74	30.74	29.65	1.09	28.202	
400.00	400.00	400.40	400.38	0.77	0.75	91.72	-0.90	30.05	30.07	28.55	1.52	19.832	
500.00	500.00	500.56	500.39	0.99	0.95	101.59	-5.74	28.00	28.59	26.65	1.94	14.761	
568.73	568.73	569.13	568.73	1.15	1.11	112.92	-10.91	25.82	28.03	25.79	2.24	12.538 CC, ES	
600.00	600.00	600.22	599.68	1.22	1.18	119.20	-13.76	24.61	28.20	25.83	2.37	11.903	
700.00	700.00	699.17	697.88	1.44	1.45	141.28	-24.85	19.92	31.92	29.12	2.80	11.389 SF	
740.00	740.00	738.49	736.78	1.53	1.57	149.58	-30.13	17.69	35.09	32.10	2.99	11.753	
800.00	800.00	797.15	794.66	1.66	1.76	-138.08	-38.91	13.98	42.15	38.82	3.33	12.648	
900.00	899.92	893.84	889.60	1.88	2.12	-127.94	-55.77	6.85	59.75	55.97	3.78	15.801	
1,000.00	999.64	988.90	982.28	2.11	2.53	-123.21	-75.20	-1.37	83.05	78.80	4.25	19.535	
1,100.00	1,099.05	1,082.02	1,072.35	2.35	2.98	-121.11	-96.98	-10.58	111.20	106.45	4.75	23.405	
1,200.00	1,198.03	1,172.94	1,159.50	2.63	3.47	-120.24	-120.83	-20.66	143.82	138.54	5.29	27.209	
1,300.00	1,296.44	1,261.41	1,243.47	2.94	4.00	-119.93	-146.48	-31.50	180.72	174.86	5.86	30.837	
1,400.67	1,394.83	1,347.81	1,324.60	3.30	4.56	-119.86	-173.81	-43.06	222.02	215.54	6.48	34.249	
1,500.00	1,491.53	1,430.65	1,401.53	3.70	5.14	-120.40	-202.13	-55.03	265.93	258.77	7.17	37.115	
1,600.00	1,588.88	1,511.98	1,476.15	4.12	5.75	-120.55	-231.91	-67.63	312.40	304.53	7.87	39.695	
1,700.00	1,686.23	1,597.05	1,553.45	4.55	6.42	-120.51	-264.63	-81.46	360.55	351.94	8.61	41.858	
1,800.00	1,783.59	1,684.63	1,632.98	5.00	7.12	-120.47	-298.42	-95.75	408.82	399.44	9.38	43.567	
1,900.00	1,880.94	1,772.21	1,712.50	5.45	7.83	-120.44	-332.20	-110.03	457.09	446.93	10.17	44.967	
2,000.00	1,978.29	1,859.79	1,792.03	5.91	8.53	-120.42	-365.99	-124.32	505.36	494.41	10.96	46.129	
2,100.00	2,075.64	1,947.37	1,871.55	6.38	9.25	-120.40	-399.78	-138.60	553.64	541.88	11.75	47.105	
2,200.00	2,173.00	2,034.94	1,951.08	6.85	9.96	-120.38	-433.57	-152.89	601.91	589.35	12.56	47.935	
2,300.00	2,270.35	2,122.52	2,030.60	7.32	10.68	-120.36	-467.35	-167.17	650.18	636.81	13.37	48.647	
2,400.00	2,367.70	2,210.10	2,110.13	7.79	11.40	-120.35	-501.14	-181.46	698.45	684.27	14.18	49.264	
2,500.00	2,465.05	2,297.68	2,189.65	8.27	12.11	-120.34	-534.93	-195.74	746.72	731.73	14.99	49.803	
2,600.00	2,562.41	2,385.26	2,269.18	8.74	12.83	-120.33	-568.71	-210.03	794.99	779.18	15.81	50.277	
2,700.00	2,659.76	2,472.84	2,348.70	9.22	13.55	-120.32	-602.50	-224.32	843.26	826.63	16.63	50.697	
2,800.00	2,757.11	2,560.41	2,428.23	9.70	14.28	-120.31	-636.29	-238.60	891.53	874.07	17.46	51.072	
2,900.00	2,854.46	2,647.99	2,507.75	10.19	15.00	-120.30	-670.07	-252.89	939.80	921.52	18.28	51.407	
3,000.00	2,951.82	2,735.57	2,587.28	10.67	15.72	-120.30	-703.86	-267.17	988.07	968.97	19.11	51.710	
3,100.00	3,049.17	2,823.15	2,666.81	11.15	16.44	-120.29	-737.65	-281.46	1,036.34	1,016.41	19.94	51.984	
3,200.00	3,146.52	2,910.73	2,746.33	11.64	17.17	-120.29	-771.43	-295.74	1,084.61	1,063.85	20.76	52.233	
3,300.00	3,243.87	2,998.30	2,825.86	12.12	17.89	-120.28	-805.22	-310.03	1,132.89	1,111.29	21.60	52.460	
3,400.00	3,341.23	3,085.88	2,905.38	12.61	18.61	-120.28	-839.01	-324.32	1,181.16	1,158.73	22.43	52.668	
3,500.00	3,438.58	3,173.46	2,984.91	13.09	19.34	-120.27	-872.79	-338.60	1,229.43	1,206.17	23.26	52.860	
3,600.00	3,535.93	3,261.04	3,064.43	13.58	20.06	-120.27	-906.58	-352.89	1,277.70	1,253.61	24.09	53.037	
3,700.00	3,633.28	3,348.62	3,143.96	14.07	20.79	-120.27	-940.37	-367.17	1,325.97	1,301.05	24.92	53.200	
3,800.00	3,730.64	3,436.19	3,223.48	14.55	21.51	-120.26	-974.16	-381.46	1,374.24	1,348.48	25.76	53.351	
3,900.00	3,827.99	3,523.77	3,303.01	15.04	22.24	-120.26	-1,007.94	-395.74	1,422.51	1,395.92	26.59	53.492	
4,000.00	3,925.34	3,611.35	3,382.53	15.53	22.96	-120.26	-1,041.73	-410.03	1,470.78	1,443.35	27.43	53.624	
4,100.00	4,022.69	3,698.93	3,462.06	16.02	23.69	-120.25	-1,075.52	-424.32	1,519.05	1,490.79	28.26	53.746	
4,200.00	4,120.05	3,786.51	3,541.58	16.51	24.41	-120.25	-1,109.30	-438.60	1,567.32	1,538.23	29.10	53.861	
4,300.00	4,217.40	3,874.08	3,621.11	16.99	25.14	-120.25	-1,143.09	-452.89	1,615.60	1,585.66	29.94	53.969	
4,400.00	4,314.75	3,961.66	3,700.63	17.48	25.86	-120.25	-1,176.88	-467.17	1,663.87	1,633.09	30.77	54.070	
4,500.00	4,412.10	4,049.24	3,780.16	17.97	26.59	-120.24	-1,210.66	-481.46	1,712.14	1,680.53	31.61	54.166	
4,600.00	4,509.46	4,136.82	3,859.69	18.46	27.31	-120.24	-1,244.45	-495.74	1,760.41	1,727.96	32.45	54.255	
4,700.00	4,606.81	4,224.40	3,939.21	18.95	28.04	-120.24	-1,278.24	-510.03	1,808.68	1,775.40	33.28	54.340	
4,800.00	4,704.16	4,311.97	4,018.74	19.44	28.77	-120.24	-1,312.02	-524.31	1,856.95	1,822.83	34.12	54.421	
4,900.00	4,801.52	4,399.55	4,098.26	19.93	29.49	-120.24	-1,345.81	-538.60	1,905.22	1,870.26	34.96	54.497	

CC - Min centre to center distance or convergent point, SF - min separation factor, ES - min ellipse separation

<b>Company:</b>	US ROCKIES REGION PLANNING	<b>Local Co-ordinate Reference:</b>	Well P_EVERIST 25-32
<b>Project:</b>	COLORADO NORTHERN ZONE - 83	<b>TVD Reference:</b>	WELL @ 4823.00ft (Original Well Elev)
<b>Reference Site:</b>	WELD_EVERIST 4 PAD	<b>MD Reference:</b>	WELL @ 4823.00ft (Original Well Elev)
<b>Site Error:</b>	0.00ft	<b>North Reference:</b>	True
<b>Reference Well:</b>	P_EVERIST 25-32	<b>Survey Calculation Method:</b>	Minimum Curvature
<b>Well Error:</b>	0.00ft	<b>Output errors are at</b>	2.00 sigma
<b>Reference Wellbore</b>	P_EVERIST 25-32	<b>Database:</b>	EDM 2003.21 Single User Db
<b>Reference Design:</b>	PLAN #1 3-16-10 RHS	<b>Offset TVD Reference:</b>	Offset Datum

Offset Design WELD_EVERIST 4 PAD - P_EVERIST 28-5 - P_EVERIST 28-5 - PLAN #1 3-16-10 RHS												Offset Site Error:	0.00 ft
Survey Program: 0-MWD												Offset Well Error:	0.00 ft
Reference	Offset	Semi Major Axis		Distance									
Measured Depth (ft)	Vertical Depth (ft)	Measured Depth (ft)	Vertical Depth (ft)	Reference (ft)	Offset (ft)	Highside Toolface (°)	Offset Wellbore Centre +N/-S (ft)	+E/-W (ft)	Between Centres (ft)	Between Ellipses (ft)	Minimum Separation (ft)	Separation Factor	Warning
5,000.00	4,898.87	4,487.13	4,177.79	20.42	30.22	-120.24	-1,379.60	-552.89	1,953.49	1,917.69	35.80	54.569	
5,100.00	4,996.22	4,574.71	4,257.31	20.91	30.95	-120.23	-1,413.38	-567.17	2,001.76	1,965.13	36.64	54.638	
5,200.00	5,093.57	4,662.29	4,336.84	21.40	31.67	-120.23	-1,447.17	-581.46	2,050.03	2,012.56	37.48	54.703	
5,300.00	5,190.93	4,749.86	4,416.36	21.89	32.40	-120.23	-1,480.96	-595.74	2,098.31	2,059.99	38.31	54.765	
5,400.00	5,288.28	4,837.44	4,495.89	22.38	33.12	-120.23	-1,514.75	-610.03	2,146.58	2,107.42	39.15	54.825	
5,478.98	5,365.17	4,906.61	4,558.70	22.76	33.70	-120.23	-1,541.43	-621.31	2,184.70	2,144.88	39.82	54.869	
5,500.00	5,385.65	4,925.04	4,575.43	22.85	33.85	-120.43	-1,548.54	-624.32	2,194.81	2,154.76	40.05	54.798	
5,600.00	5,483.53	5,013.19	4,655.47	23.20	34.58	-121.28	-1,582.55	-638.70	2,241.98	2,200.88	41.09	54.560	
5,700.00	5,582.07	5,102.05	4,736.17	23.50	35.32	-122.01	-1,616.83	-653.19	2,287.54	2,245.46	42.08	54.365	
5,800.00	5,681.14	5,191.52	4,817.41	23.76	36.06	-122.62	-1,651.35	-667.79	2,331.47	2,288.46	43.00	54.214	
5,900.00	5,780.63	5,281.50	4,899.11	23.98	36.81	-123.11	-1,686.06	-682.46	2,373.74	2,329.87	43.87	54.109	
6,000.00	5,880.40	5,371.86	4,981.17	24.16	37.56	-123.50	-1,720.92	-697.20	2,414.33	2,369.67	44.67	54.052	
6,100.00	5,980.35	5,462.51	5,063.48	24.29	38.31	-123.79	-1,755.89	-711.99	2,453.26	2,407.86	45.40	54.041	
6,139.65	6,020.00	5,498.50	5,096.16	24.33	38.61	173.97	-1,769.78	-717.86	2,468.23	2,422.57	45.67	54.050	
6,200.00	6,080.35	5,553.30	5,145.92	24.40	39.06	174.24	-1,790.92	-726.80	2,490.84	2,444.90	45.94	54.219	
6,300.00	6,180.35	5,644.10	5,228.38	24.52	39.82	174.69	-1,825.95	-741.61	2,528.43	2,482.02	46.41	54.485	
6,400.00	6,280.35	5,734.91	5,310.83	24.64	40.57	175.12	-1,860.98	-756.42	2,566.14	2,519.27	46.87	54.751	
6,500.00	6,380.35	5,825.71	5,393.29	24.76	41.32	175.55	-1,896.01	-771.23	2,603.99	2,556.66	47.33	55.017	
6,600.00	6,480.35	5,916.52	5,475.75	24.89	42.08	175.96	-1,931.04	-786.05	2,641.95	2,594.16	47.79	55.284	
6,700.00	6,580.35	6,007.32	5,558.20	25.01	42.83	176.36	-1,966.08	-800.86	2,680.03	2,631.79	48.25	55.549	
6,800.00	6,680.35	6,386.70	5,910.12	25.14	45.01	177.74	-2,095.95	-855.77	2,715.85	2,666.49	49.36	55.016	
6,900.00	6,780.35	7,137.92	6,646.44	25.27	47.23	178.97	-2,222.68	-909.36	2,732.78	2,681.98	50.80	53.791	
7,000.00	6,880.35	7,371.89	6,880.35	25.40	47.42	179.01	-2,226.48	-910.96	2,733.26	2,682.07	51.19	53.392	
7,100.00	6,980.35	7,471.89	6,980.35	25.53	47.48	179.01	-2,226.48	-910.96	2,733.26	2,681.83	51.43	53.146	
7,200.00	7,080.35	7,571.89	7,080.35	25.66	47.53	179.01	-2,226.48	-910.96	2,733.26	2,681.59	51.67	52.899	
7,300.00	7,180.35	7,671.89	7,180.35	25.80	47.59	179.01	-2,226.48	-910.96	2,733.26	2,681.35	51.91	52.651	
7,400.00	7,280.35	7,771.89	7,280.35	25.93	47.64	179.01	-2,226.48	-910.96	2,733.26	2,681.10	52.16	52.403	
7,500.00	7,380.35	7,871.89	7,380.35	26.07	47.70	179.01	-2,226.48	-910.96	2,733.26	2,680.85	52.41	52.155	
7,600.00	7,480.35	7,971.89	7,480.35	26.20	47.76	179.01	-2,226.48	-910.96	2,733.26	2,680.60	52.66	51.907	
7,700.00	7,580.35	8,071.89	7,580.35	26.34	47.82	179.01	-2,226.48	-910.96	2,733.26	2,680.35	52.91	51.658	
7,800.00	7,680.35	8,171.89	7,680.35	26.48	47.88	179.01	-2,226.48	-910.96	2,733.26	2,680.09	53.17	51.409	
7,900.00	7,780.35	8,271.89	7,780.35	26.62	47.94	179.01	-2,226.48	-910.96	2,733.26	2,679.84	53.43	51.161	
7,955.50	7,835.85	8,327.40	7,835.85	26.70	47.98	179.01	-2,226.48	-910.96	2,733.26	2,679.69	53.57	51.023	
7,987.65	7,868.00	8,351.55	7,860.00	26.75	47.99	179.01	-2,226.48	-910.96	2,733.27	2,679.63	53.64	50.951	

<b>Company:</b>	US ROCKIES REGION PLANNING	<b>Local Co-ordinate Reference:</b>	Well P_EVERIST 25-32
<b>Project:</b>	COLORADO NORTHERN ZONE - 83	<b>TVD Reference:</b>	WELL @ 4823.00ft (Original Well Elev)
<b>Reference Site:</b>	WELD_EVERIST 4 PAD	<b>MD Reference:</b>	WELL @ 4823.00ft (Original Well Elev)
<b>Site Error:</b>	0.00ft	<b>North Reference:</b>	True
<b>Reference Well:</b>	P_EVERIST 25-32	<b>Survey Calculation Method:</b>	Minimum Curvature
<b>Well Error:</b>	0.00ft	<b>Output errors are at</b>	2.00 sigma
<b>Reference Wellbore</b>	P_EVERIST 25-32	<b>Database:</b>	EDM 2003.21 Single User Db
<b>Reference Design:</b>	PLAN #1 3-16-10 RHS	<b>Offset TVD Reference:</b>	Offset Datum

Offset Design WELD_EVERIST 4 PAD - P_EVERIST 40-32 - P_EVERIST 40-32 - PLAN #1 3-16-10 RHS												Offset Site Error:	0.00 ft
Survey Program: 0-MWD												Offset Well Error:	0.00 ft
Measured Depth (ft)	Vertical Depth (ft)	Measured Depth (ft)	Vertical Depth (ft)	Reference (ft)	Offset (ft)	Highside Toolface (°)	Offset Wellbore Centre +N/-S (ft)	+E/-W (ft)	Between Centres (ft)	Between Ellipses (ft)	Minimum Separation (ft)	Separation Factor	Warning
0.00	0.00	0.00	0.00	0.00	0.00	89.57	0.35	46.66	46.66				
100.00	100.00	100.00	100.00	0.10	0.10	89.57	0.35	46.66	46.66	46.47	0.19	244.242	
200.00	200.00	200.00	200.00	0.32	0.32	89.57	0.35	46.66	46.66	46.02	0.64	72.844	
300.00	300.00	300.00	300.00	0.55	0.55	89.57	0.35	46.66	46.66	45.57	1.09	42.805	
400.00	400.00	400.00	400.00	0.77	0.77	89.57	0.35	46.66	46.66	45.12	1.54	30.307	
500.00	500.00	500.00	500.00	0.99	0.99	89.57	0.35	46.66	46.66	44.67	1.99	23.458	
600.00	600.00	600.00	600.00	1.22	1.22	89.57	0.35	46.66	46.66	44.22	2.44	19.134	
700.00	700.00	700.00	700.00	1.44	1.44	89.57	0.35	46.66	46.66	43.77	2.89	16.156	
740.00	740.00	740.00	740.00	1.53	1.53	89.57	0.35	46.66	46.66	43.59	3.07	15.209 CC, ES	
800.00	800.00	799.04	799.04	1.66	1.66	151.89	0.49	47.25	47.82	44.49	3.32	14.386 SF	
900.00	899.92	897.08	897.00	1.88	1.87	152.79	1.36	50.85	54.88	51.14	3.73	14.698	
1,000.00	999.64	994.15	993.81	2.11	2.08	153.97	3.00	57.61	68.33	64.19	4.14	16.487	
1,100.00	1,099.05	1,089.66	1,088.79	2.35	2.31	155.02	5.36	67.38	88.10	83.55	4.56	19.340	
1,200.00	1,198.03	1,183.07	1,181.30	2.63	2.56	155.80	8.39	79.90	114.06	109.09	4.97	22.961	
1,300.00	1,296.44	1,273.89	1,270.81	2.94	2.84	156.33	12.02	94.88	146.02	140.63	5.38	27.132	
1,400.67	1,394.83	1,362.28	1,357.40	3.30	3.14	156.64	16.18	112.09	184.03	178.23	5.80	31.717	
1,500.00	1,491.53	1,446.79	1,439.64	3.70	3.47	157.00	20.75	130.98	225.62	219.36	6.26	36.032	
1,600.00	1,588.88	1,529.67	1,519.70	4.12	3.84	157.05	25.78	151.78	269.97	263.24	6.73	40.087	
1,700.00	1,686.23	1,610.29	1,596.97	4.55	4.23	156.93	31.20	174.16	316.72	309.50	7.22	43.888	
1,800.00	1,783.59	1,688.64	1,671.40	5.00	4.66	156.70	36.95	197.93	365.77	358.06	7.71	47.457	
1,900.00	1,880.94	1,766.52	1,744.71	5.45	5.12	156.42	43.13	223.48	416.98	408.77	8.21	50.796	
2,000.00	1,978.29	1,851.95	1,824.87	5.91	5.66	156.14	50.07	252.18	468.93	460.19	8.74	53.637	
2,100.00	2,075.64	1,937.37	1,905.02	6.38	6.22	155.91	57.02	280.89	520.89	511.61	9.28	56.107	
2,200.00	2,173.00	2,022.80	1,985.18	6.85	6.78	155.73	63.96	309.59	572.86	563.02	9.83	58.265	
2,300.00	2,270.35	2,108.22	2,065.34	7.32	7.35	155.57	70.91	338.30	624.82	614.44	10.39	60.162	
2,400.00	2,367.70	2,193.65	2,145.50	7.79	7.93	155.44	77.85	367.01	676.79	665.85	10.94	61.838	
2,500.00	2,465.05	2,279.08	2,225.66	8.27	8.51	155.33	84.80	395.71	728.76	717.25	11.51	63.328	
2,600.00	2,562.41	2,364.50	2,305.81	8.74	9.10	155.24	91.74	424.42	780.74	768.66	12.07	64.659	
2,700.00	2,659.76	2,449.93	2,385.97	9.22	9.69	155.15	98.69	453.12	832.71	820.07	12.64	65.855	
2,800.00	2,757.11	2,535.35	2,466.13	9.70	10.28	155.08	105.63	481.83	884.69	871.47	13.22	66.935	
2,900.00	2,854.46	2,620.78	2,546.29	10.19	10.88	155.01	112.58	510.54	936.66	922.87	13.79	67.913	
3,000.00	2,951.82	2,706.21	2,626.45	10.67	11.47	154.95	119.52	539.24	988.64	974.27	14.37	68.803	
3,100.00	3,049.17	2,791.63	2,706.60	11.15	12.07	154.90	126.46	567.95	1,040.62	1,025.67	14.95	69.615	
3,200.00	3,146.52	2,877.06	2,786.76	11.64	12.67	154.85	133.41	596.66	1,092.60	1,077.07	15.53	70.359	
3,300.00	3,243.87	2,962.48	2,866.92	12.12	13.27	154.81	140.35	625.36	1,144.58	1,128.47	16.11	71.043	
3,400.00	3,341.23	3,047.91	2,947.08	12.61	13.88	154.76	147.30	654.07	1,196.56	1,179.86	16.69	71.673	
3,500.00	3,438.58	3,133.34	3,027.24	13.09	14.48	154.73	154.24	682.77	1,248.54	1,231.26	17.28	72.256	
3,600.00	3,535.93	3,218.76	3,107.40	13.58	15.08	154.69	161.19	711.48	1,300.52	1,282.65	17.86	72.797	
3,700.00	3,633.28	3,304.19	3,187.55	14.07	15.69	154.66	168.13	740.19	1,352.50	1,334.05	18.45	73.300	
3,800.00	3,730.64	3,389.61	3,267.71	14.55	16.29	154.63	175.08	768.89	1,404.48	1,385.44	19.04	73.768	
3,900.00	3,827.99	3,475.04	3,347.87	15.04	16.90	154.61	182.02	797.60	1,456.46	1,436.83	19.63	74.204	
4,000.00	3,925.34	3,560.47	3,428.03	15.53	17.51	154.58	188.97	826.30	1,508.44	1,488.23	20.22	74.613	
4,100.00	4,022.69	3,645.89	3,508.19	16.02	18.12	154.56	195.91	855.01	1,560.42	1,539.62	20.81	74.997	
4,200.00	4,120.05	3,731.32	3,588.34	16.51	18.72	154.54	202.86	883.72	1,612.41	1,591.01	21.40	75.357	
4,300.00	4,217.40	3,816.74	3,668.50	16.99	19.33	154.52	209.80	912.42	1,664.39	1,642.40	21.99	75.695	
4,400.00	4,314.75	3,902.17	3,748.66	17.48	19.94	154.50	216.75	941.13	1,716.37	1,693.79	22.58	76.015	
4,500.00	4,412.10	3,987.60	3,828.82	17.97	20.55	154.48	223.69	969.83	1,768.35	1,745.18	23.17	76.316	
4,600.00	4,509.46	4,073.02	3,908.98	18.46	21.16	154.46	230.64	998.54	1,820.34	1,796.57	23.76	76.601	
4,700.00	4,606.81	4,158.45	3,989.14	18.95	21.77	154.45	237.58	1,027.25	1,872.32	1,847.96	24.36	76.871	
4,800.00	4,704.16	4,243.87	4,069.29	19.44	22.38	154.43	244.53	1,055.95	1,924.30	1,899.35	24.95	77.126	
4,900.00	4,801.52	4,329.30	4,149.45	19.93	22.99	154.42	251.47	1,084.66	1,976.28	1,950.74	25.54	77.369	
5,000.00	4,898.87	4,414.72	4,229.61	20.42	23.60	154.40	258.42	1,113.36	2,028.27	2,002.13	26.14	77.600	

CC - Min centre to center distance or convergent point, SF - min separation factor, ES - min ellipse separation

<b>Company:</b>	US ROCKIES REGION PLANNING	<b>Local Co-ordinate Reference:</b>	Well P_EVERIST 25-32
<b>Project:</b>	COLORADO NORTHERN ZONE - 83	<b>TVD Reference:</b>	WELL @ 4823.00ft (Original Well Elev)
<b>Reference Site:</b>	WELD_EVERIST 4 PAD	<b>MD Reference:</b>	WELL @ 4823.00ft (Original Well Elev)
<b>Site Error:</b>	0.00ft	<b>North Reference:</b>	True
<b>Reference Well:</b>	P_EVERIST 25-32	<b>Survey Calculation Method:</b>	Minimum Curvature
<b>Well Error:</b>	0.00ft	<b>Output errors are at</b>	2.00 sigma
<b>Reference Wellbore</b>	P_EVERIST 25-32	<b>Database:</b>	EDM 2003.21 Single User Db
<b>Reference Design:</b>	PLAN #1 3-16-10 RHS	<b>Offset TVD Reference:</b>	Offset Datum

Offset Design WELD_EVERIST 4 PAD - P_EVERIST 40-32 - P_EVERIST 40-32 - PLAN #1 3-16-10 RHS												Offset Site Error:	0.00 ft
Survey Program: 0-MWD												Offset Well Error:	0.00 ft
Reference	Offset	Semi Major Axis		Distance									
Measured Depth (ft)	Vertical Depth (ft)	Measured Depth (ft)	Vertical Depth (ft)	Reference (ft)	Offset (ft)	Highside Toolface (°)	Offset Wellbore Centre +N/-S (ft)	+E/-W (ft)	Between Centres (ft)	Between Ellipses (ft)	Minimum Separation (ft)	Separation Factor	Warning
5,100.00	4,996.22	4,500.15	4,309.77	20.91	24.21	154.39	265.36	1,142.07	2,080.25	2,053.52	26.73	77.820	
5,200.00	5,093.57	4,585.58	4,389.93	21.40	24.82	154.38	272.30	1,170.78	2,132.23	2,104.91	27.33	78.029	
5,300.00	5,190.93	4,671.00	4,470.08	21.89	25.43	154.36	279.25	1,199.48	2,184.22	2,156.30	27.92	78.228	
5,400.00	5,288.28	4,756.43	4,550.24	22.38	26.04	154.35	286.19	1,228.19	2,236.20	2,207.68	28.52	78.419	
5,478.98	5,365.17	4,823.90	4,613.55	22.76	26.52	154.34	291.68	1,250.86	2,277.26	2,248.27	28.99	78.564	
5,500.00	5,385.65	4,841.89	4,630.43	22.85	26.65	154.45	293.14	1,256.91	2,288.12	2,258.97	29.16	78.476	
5,600.00	5,483.53	4,928.44	4,711.65	23.20	27.27	154.91	300.18	1,285.99	2,338.18	2,308.25	29.93	78.129	
5,700.00	5,582.07	5,016.50	4,794.27	23.50	27.90	155.28	307.34	1,315.58	2,385.48	2,354.81	30.66	77.792	
5,800.00	5,681.14	5,105.95	4,878.21	23.76	28.54	155.58	314.61	1,345.64	2,429.97	2,398.60	31.37	77.472	
5,900.00	5,780.63	5,196.68	4,963.35	23.98	29.19	155.80	321.98	1,376.13	2,471.60	2,439.57	32.03	77.172	
6,000.00	5,880.40	5,288.59	5,049.59	24.16	29.84	155.97	329.46	1,407.01	2,510.33	2,477.68	32.65	76.896	
6,100.00	5,980.35	5,764.91	5,507.03	24.29	32.12	155.44	360.22	1,534.17	2,541.03	2,506.82	34.21	74.282	
6,139.65	6,020.00	6,027.72	5,766.81	24.33	32.85	93.10	369.44	1,572.28	2,546.95	2,512.12	34.84	73.110	
6,200.00	6,080.35	6,341.80	6,080.35	24.40	33.29	93.00	373.07	1,587.30	2,549.15	2,513.73	35.42	71.976	
6,300.00	6,180.35	6,441.80	6,180.35	24.52	33.37	93.00	373.07	1,587.30	2,549.15	2,513.43	35.72	71.366	
6,400.00	6,280.35	6,541.80	6,280.35	24.64	33.46	93.00	373.07	1,587.30	2,549.15	2,513.12	36.03	70.754	
6,500.00	6,380.35	6,641.80	6,380.35	24.76	33.55	93.00	373.07	1,587.30	2,549.15	2,512.81	36.34	70.148	
6,600.00	6,480.35	6,741.80	6,480.35	24.89	33.64	93.00	373.07	1,587.30	2,549.15	2,512.49	36.65	69.547	
6,700.00	6,580.35	6,841.80	6,580.35	25.01	33.73	93.00	373.07	1,587.30	2,549.15	2,512.18	36.97	68.950	
6,800.00	6,680.35	6,941.80	6,680.35	25.14	33.82	93.00	373.07	1,587.30	2,549.15	2,511.86	37.29	68.359	
6,900.00	6,780.35	7,041.80	6,780.35	25.27	33.92	93.00	373.07	1,587.30	2,549.15	2,511.53	37.61	67.773	
7,000.00	6,880.35	7,141.80	6,880.35	25.40	34.02	93.00	373.07	1,587.30	2,549.15	2,511.21	37.94	67.193	
7,100.00	6,980.35	7,241.80	6,980.35	25.53	34.11	93.00	373.07	1,587.30	2,549.15	2,510.88	38.27	66.618	
7,200.00	7,080.35	7,341.80	7,080.35	25.66	34.21	93.00	373.07	1,587.30	2,549.15	2,510.55	38.60	66.048	
7,300.00	7,180.35	7,441.80	7,180.35	25.80	34.31	93.00	373.07	1,587.30	2,549.15	2,510.22	38.93	65.485	
7,400.00	7,280.35	7,541.80	7,280.35	25.93	34.41	93.00	373.07	1,587.30	2,549.15	2,509.89	39.26	64.927	
7,500.00	7,380.35	7,641.80	7,380.35	26.07	34.51	93.00	373.07	1,587.30	2,549.15	2,509.55	39.60	64.374	
7,600.00	7,480.35	7,741.80	7,480.35	26.20	34.62	93.00	373.07	1,587.30	2,549.15	2,509.21	39.94	63.828	
7,700.00	7,580.35	7,841.80	7,580.35	26.34	34.72	93.00	373.07	1,587.30	2,549.15	2,508.87	40.28	63.287	
7,800.00	7,680.35	7,941.80	7,680.35	26.48	34.83	93.00	373.07	1,587.30	2,549.15	2,508.53	40.62	62.752	
7,900.00	7,780.35	8,041.80	7,780.35	26.62	34.93	93.00	373.07	1,587.30	2,549.15	2,508.18	40.97	62.223	
7,953.35	7,833.69	8,095.15	7,833.69	26.70	34.99	93.00	373.07	1,587.30	2,549.15	2,507.99	41.15	61.944	
7,987.65	7,868.00	8,116.45	7,855.00	26.75	35.01	93.00	373.07	1,587.30	2,549.18	2,507.93	41.25	61.798	



<b>Company:</b>	US ROCKIES REGION PLANNING	<b>Local Co-ordinate Reference:</b>	Well P_EVERIST 25-32
<b>Project:</b>	COLORADO NORTHERN ZONE - 83	<b>TVD Reference:</b>	WELL @ 4823.00ft (Original Well Elev)
<b>Reference Site:</b>	WELD_EVERIST 4 PAD	<b>MD Reference:</b>	WELL @ 4823.00ft (Original Well Elev)
<b>Site Error:</b>	0.00ft	<b>North Reference:</b>	True
<b>Reference Well:</b>	P_EVERIST 25-32	<b>Survey Calculation Method:</b>	Minimum Curvature
<b>Well Error:</b>	0.00ft	<b>Output errors are at</b>	2.00 sigma
<b>Reference Wellbore</b>	P_EVERIST 25-32	<b>Database:</b>	EDM 2003.21 Single User Db
<b>Reference Design:</b>	PLAN #1 3-16-10 RHS	<b>Offset TVD Reference:</b>	Offset Datum

Offset Design WELD_EVERIST 4 PAD - P_EVERIST 7-32 - P_EVERIST 7-32 - PLAN #1 3-16-10 RHS												Offset Site Error:	0.00 ft
Survey Program: 0-MWD												Offset Well Error:	0.00 ft
Reference		Offset		Semi Major Axis			Distance						Warning
Measured Depth (ft)	Vertical Depth (ft)	Measured Depth (ft)	Vertical Depth (ft)	Reference (ft)	Offset (ft)	Highside Toolface (°)	Offset Wellbore Centre +N/-S (ft)	+E/-W (ft)	Between Centres (ft)	Between Ellipses (ft)	Minimum Separation (ft)	Separation Factor	
0.00	0.00	0.00	0.00	0.00	0.00	87.23	0.72	14.81	14.83				
100.00	100.00	100.00	100.00	0.10	0.10	87.23	0.72	14.81	14.83	14.63	0.19	77.602	
200.00	200.00	200.00	200.00	0.32	0.32	87.23	0.72	14.81	14.83	14.19	0.64	23.145	
300.00	300.00	300.00	300.00	0.55	0.55	87.23	0.72	14.81	14.83	13.74	1.09	13.600	
400.00	400.00	400.00	400.00	0.77	0.77	87.23	0.72	14.81	14.83	13.29	1.54	9.629	
500.00	500.00	500.00	500.00	0.99	0.99	87.23	0.72	14.81	14.83	12.84	1.99	7.453	
600.00	600.00	600.00	600.00	1.22	1.22	87.23	0.72	14.81	14.83	12.39	2.44	6.079	
700.00	700.00	700.00	700.00	1.44	1.44	87.23	0.72	14.81	14.83	11.94	2.89	5.133	
740.00	740.00	740.00	740.00	1.53	1.53	87.23	0.72	14.81	14.83	11.76	3.07	4.832 CC, ES	
800.00	800.00	800.12	800.11	1.66	1.67	148.39	1.28	14.54	15.12	11.79	3.33	4.539	
900.00	899.92	900.27	900.19	1.88	1.89	143.12	4.76	12.87	17.03	13.27	3.76	4.525 SF	
1,000.00	999.64	1,000.31	999.96	2.11	2.12	135.84	11.37	9.69	20.95	16.74	4.21	4.980	
1,100.00	1,099.05	1,100.17	1,099.22	2.35	2.37	129.09	21.09	5.01	27.12	22.44	4.68	5.794	
1,200.00	1,198.03	1,199.77	1,197.80	2.63	2.64	123.81	33.90	-1.14	35.59	30.39	5.20	6.838	
1,300.00	1,296.44	1,299.05	1,295.51	2.94	2.94	119.94	49.72	-8.75	46.34	40.54	5.80	7.993	
1,400.67	1,394.83	1,398.60	1,392.82	3.30	3.29	117.10	68.65	-17.85	59.40	52.92	6.48	9.168	
1,500.00	1,491.53	1,496.92	1,488.54	3.70	3.67	115.37	88.84	-27.56	73.42	66.19	7.23	10.152	
1,600.00	1,588.88	1,595.90	1,584.92	4.12	4.07	114.18	109.16	-37.33	87.57	79.55	8.02	10.912	
1,700.00	1,686.23	1,694.88	1,681.30	4.55	4.49	113.33	129.49	-47.10	101.75	92.90	8.85	11.503	
1,800.00	1,783.59	1,793.86	1,777.67	5.00	4.92	112.68	149.82	-56.87	115.95	106.26	9.69	11.970	
1,900.00	1,880.94	1,892.84	1,874.05	5.45	5.36	112.17	170.15	-66.65	130.15	119.61	10.54	12.345	
2,000.00	1,978.29	1,991.82	1,970.42	5.91	5.80	111.77	190.48	-76.42	144.37	132.96	11.41	12.652	
2,100.00	2,075.64	2,090.80	2,066.80	6.38	6.25	111.44	210.80	-86.19	158.59	146.30	12.29	12.906	
2,200.00	2,173.00	2,189.77	2,163.17	6.85	6.70	111.16	231.13	-95.96	172.82	159.64	13.17	13.118	
2,300.00	2,270.35	2,288.75	2,259.55	7.32	7.16	110.92	251.46	-105.74	187.05	172.98	14.06	13.299	
2,400.00	2,367.70	2,387.73	2,355.92	7.79	7.62	110.72	271.79	-115.51	201.28	186.32	14.96	13.453	
2,500.00	2,465.05	2,486.71	2,452.30	8.27	8.08	110.54	292.12	-125.28	215.51	199.65	15.86	13.587	
2,600.00	2,562.41	2,585.69	2,548.68	8.74	8.54	110.39	312.44	-135.06	229.75	212.98	16.77	13.704	
2,700.00	2,659.76	2,684.67	2,645.05	9.22	9.00	110.25	332.77	-144.83	243.98	226.31	17.67	13.806	
2,800.00	2,757.11	2,783.65	2,741.43	9.70	9.47	110.13	353.10	-154.60	258.22	239.64	18.58	13.897	
2,900.00	2,854.46	2,882.63	2,837.80	10.19	9.94	110.03	373.43	-164.37	272.46	252.97	19.49	13.977	
3,000.00	2,951.82	2,981.61	2,934.18	10.67	10.40	109.93	393.76	-174.15	286.70	266.30	20.41	14.049	
3,100.00	3,049.17	3,080.59	3,030.55	11.15	10.87	109.84	414.08	-183.92	300.94	279.62	21.32	14.114	
3,200.00	3,146.52	3,179.57	3,126.93	11.64	11.34	109.76	434.41	-193.69	315.19	292.95	22.24	14.173	
3,300.00	3,243.87	3,278.55	3,223.31	12.12	11.81	109.69	454.74	-203.46	329.43	306.27	23.16	14.226	
3,400.00	3,341.23	3,377.53	3,319.68	12.61	12.28	109.62	475.07	-213.24	343.67	319.60	24.08	14.275	
3,500.00	3,438.58	3,476.51	3,416.06	13.09	12.75	109.56	495.40	-223.01	357.91	332.92	25.00	14.319	
3,600.00	3,535.93	3,575.49	3,512.43	13.58	13.22	109.50	515.72	-232.78	372.16	346.24	25.92	14.360	
3,700.00	3,633.28	3,674.47	3,608.81	14.07	13.69	109.45	536.05	-242.55	386.40	359.56	26.84	14.398	
3,800.00	3,730.64	3,773.45	3,705.18	14.55	14.16	109.40	556.38	-252.33	400.64	372.88	27.76	14.433	
3,900.00	3,827.99	3,872.43	3,801.56	15.04	14.64	109.35	576.71	-262.10	414.89	386.21	28.68	14.465	
4,000.00	3,925.34	3,971.41	3,897.93	15.53	15.11	109.31	597.03	-271.87	429.13	399.53	29.61	14.495	
4,100.00	4,022.69	4,070.39	3,994.31	16.02	15.58	109.27	617.36	-281.65	443.38	412.85	30.53	14.523	
4,200.00	4,120.05	4,169.37	4,090.69	16.51	16.06	109.23	637.69	-291.42	457.62	426.17	31.45	14.549	
4,300.00	4,217.40	4,268.35	4,187.06	16.99	16.53	109.20	658.02	-301.19	471.87	439.49	32.38	14.573	
4,400.00	4,314.75	4,367.33	4,283.44	17.48	17.00	109.16	678.35	-310.96	486.11	452.81	33.31	14.596	
4,500.00	4,412.10	4,466.31	4,379.81	17.97	17.48	109.13	698.67	-320.74	500.36	466.13	34.23	14.617	
4,600.00	4,509.46	4,565.29	4,476.19	18.46	17.95	109.10	719.00	-330.51	514.61	479.45	35.16	14.637	
4,700.00	4,606.81	4,664.27	4,572.56	18.95	18.42	109.07	739.33	-340.28	528.85	492.77	36.08	14.656	
4,800.00	4,704.16	4,763.25	4,668.94	19.44	18.90	109.05	759.66	-350.05	543.10	506.09	37.01	14.674	
4,900.00	4,801.52	4,862.23	4,765.32	19.93	19.37	109.02	779.99	-359.83	557.34	519.41	37.94	14.691	
5,000.00	4,898.87	4,961.21	4,861.69	20.42	19.85	109.00	800.31	-369.60	571.59	532.72	38.86	14.707	

CC - Min centre to center distance or convergent point, SF - min separation factor, ES - min ellipse separation

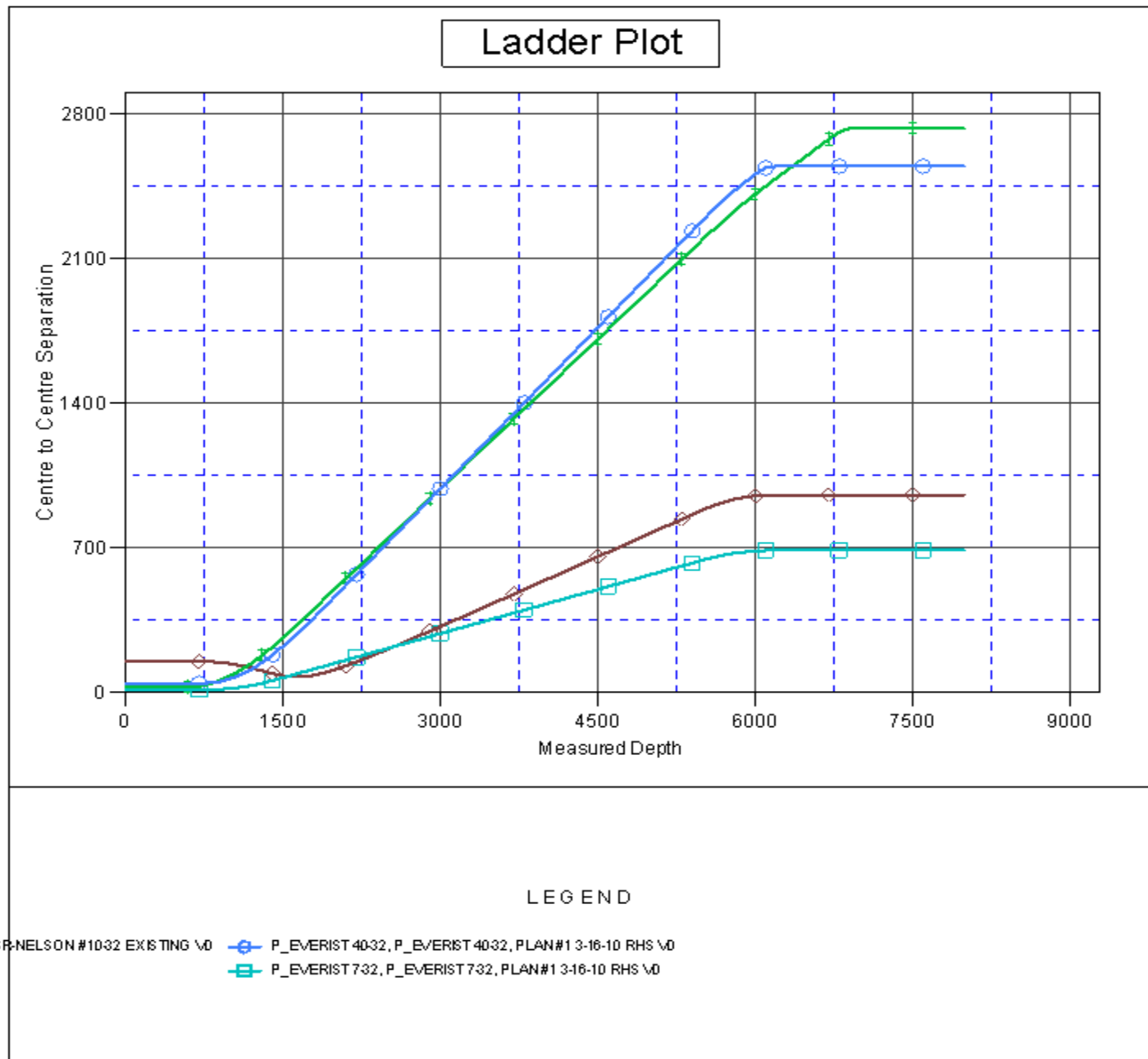
<b>Company:</b>	US ROCKIES REGION PLANNING	<b>Local Co-ordinate Reference:</b>	Well P_EVERIST 25-32
<b>Project:</b>	COLORADO NORTHERN ZONE - 83	<b>TVD Reference:</b>	WELL @ 4823.00ft (Original Well Elev)
<b>Reference Site:</b>	WELD_EVERIST 4 PAD	<b>MD Reference:</b>	WELL @ 4823.00ft (Original Well Elev)
<b>Site Error:</b>	0.00ft	<b>North Reference:</b>	True
<b>Reference Well:</b>	P_EVERIST 25-32	<b>Survey Calculation Method:</b>	Minimum Curvature
<b>Well Error:</b>	0.00ft	<b>Output errors are at</b>	2.00 sigma
<b>Reference Wellbore</b>	P_EVERIST 25-32	<b>Database:</b>	EDM 2003.21 Single User Db
<b>Reference Design:</b>	PLAN #1 3-16-10 RHS	<b>Offset TVD Reference:</b>	Offset Datum

Offset Design WELD_EVERIST 4 PAD - P_EVERIST 7-32 - P_EVERIST 7-32 - PLAN #1 3-16-10 RHS												Offset Site Error:	0.00 ft
Survey Program: 0-MWD												Offset Well Error:	0.00 ft
Reference	Offset	Semi Major Axis		Distance									
Measured Depth (ft)	Vertical Depth (ft)	Measured Depth (ft)	Vertical Depth (ft)	Reference (ft)	Offset (ft)	Highside Toolface (°)	Offset Wellbore Centre +N/-S (ft)	+E/-W (ft)	Between Centres (ft)	Between Ellipses (ft)	Minimum Separation (ft)	Separation Factor	Warning
5,100.00	4,996.22	5,060.19	4,958.07	20.91	20.32	108.97	820.64	-379.37	585.84	546.04	39.79	14.722	
5,200.00	5,093.57	5,159.17	5,054.44	21.40	20.80	108.95	840.97	-389.15	600.08	559.36	40.72	14.737	
5,300.00	5,190.93	5,258.15	5,150.82	21.89	21.27	108.93	861.30	-398.92	614.33	572.68	41.65	14.750	
5,400.00	5,288.28	5,357.13	5,247.19	22.38	21.75	108.91	881.63	-408.69	628.57	586.00	42.58	14.763	
5,478.98	5,365.17	5,435.30	5,323.31	22.76	22.12	108.90	897.68	-416.41	639.83	596.52	43.31	14.773	
5,500.00	5,385.65	5,456.11	5,343.57	22.85	22.22	108.94	901.95	-418.46	642.80	599.30	43.50	14.777	
5,600.00	5,483.53	5,560.12	5,445.06	23.20	22.63	109.04	922.46	-428.32	655.99	611.72	44.27	14.819	
5,700.00	5,582.07	5,666.65	5,549.76	23.50	22.98	109.10	940.14	-436.82	667.03	622.10	44.92	14.848	
5,800.00	5,681.14	5,773.60	5,655.53	23.76	23.28	109.15	954.36	-443.66	675.85	630.36	45.49	14.856	
5,900.00	5,780.63	5,880.86	5,762.14	23.98	23.53	109.18	965.03	-448.79	682.45	636.47	45.97	14.844	
6,000.00	5,880.40	5,988.37	5,869.35	24.16	23.74	109.20	972.10	-452.19	686.79	640.43	46.36	14.813	
6,100.00	5,980.35	6,096.01	5,976.91	24.29	23.90	109.20	975.55	-453.85	688.87	642.21	46.66	14.763	
6,139.65	6,020.00	6,138.71	6,019.62	24.33	23.94	47.05	975.91	-454.02	689.08	642.32	46.75	14.738	
6,200.00	6,080.35	6,199.44	6,080.35	24.40	24.01	47.05	975.92	-454.02	689.08	642.19	46.89	14.696	
6,300.00	6,180.35	6,299.44	6,180.35	24.52	24.13	47.05	975.92	-454.02	689.08	641.94	47.14	14.619	
6,400.00	6,280.35	6,399.44	6,280.35	24.64	24.25	47.05	975.92	-454.02	689.08	641.69	47.39	14.542	
6,500.00	6,380.35	6,499.44	6,380.35	24.76	24.37	47.05	975.92	-454.02	689.08	641.44	47.64	14.464	
6,600.00	6,480.35	6,599.44	6,480.35	24.89	24.50	47.05	975.92	-454.02	689.08	641.18	47.89	14.387	
6,700.00	6,580.35	6,699.44	6,580.35	25.01	24.62	47.05	975.92	-454.02	689.08	640.92	48.15	14.310	
6,800.00	6,680.35	6,799.44	6,680.35	25.14	24.75	47.05	975.92	-454.02	689.08	640.66	48.41	14.233	
6,900.00	6,780.35	6,899.44	6,780.35	25.27	24.88	47.05	975.92	-454.02	689.08	640.40	48.68	14.156	
7,000.00	6,880.35	6,999.44	6,880.35	25.40	25.01	47.05	975.92	-454.02	689.08	640.13	48.95	14.078	
7,100.00	6,980.35	7,099.44	6,980.35	25.53	25.14	47.05	975.92	-454.02	689.08	639.86	49.21	14.001	
7,200.00	7,080.35	7,199.44	7,080.35	25.66	25.27	47.05	975.92	-454.02	689.08	639.59	49.49	13.924	
7,300.00	7,180.35	7,299.44	7,180.35	25.80	25.41	47.05	975.92	-454.02	689.08	639.32	49.76	13.848	
7,400.00	7,280.35	7,399.44	7,280.35	25.93	25.54	47.05	975.92	-454.02	689.08	639.04	50.04	13.771	
7,500.00	7,380.35	7,499.44	7,380.35	26.07	25.68	47.05	975.92	-454.02	689.08	638.76	50.32	13.694	
7,600.00	7,480.35	7,599.44	7,480.35	26.20	25.81	47.05	975.92	-454.02	689.08	638.48	50.60	13.618	
7,700.00	7,580.35	7,699.44	7,580.35	26.34	25.95	47.05	975.92	-454.02	689.08	638.19	50.88	13.542	
7,800.00	7,680.35	7,799.44	7,680.35	26.48	26.09	47.05	975.92	-454.02	689.08	637.91	51.17	13.466	
7,900.00	7,780.35	7,899.44	7,780.35	26.62	26.23	47.05	975.92	-454.02	689.08	637.62	51.46	13.390	
7,987.65	7,868.00	7,987.10	7,868.00	26.75	26.36	47.05	975.92	-454.02	689.08	637.36	51.72	13.324	



<b>Company:</b>	US ROCKIES REGION PLANNING	<b>Local Co-ordinate Reference:</b>	Well P_EVERIST 25-32
<b>Project:</b>	COLORADO NORTHERN ZONE - 83	<b>TVD Reference:</b>	WELL @ 4823.00ft (Original Well Elev)
<b>Reference Site:</b>	WELD_EVERIST 4 PAD	<b>MD Reference:</b>	WELL @ 4823.00ft (Original Well Elev)
<b>Site Error:</b>	0.00ft	<b>North Reference:</b>	True
<b>Reference Well:</b>	P_EVERIST 25-32	<b>Survey Calculation Method:</b>	Minimum Curvature
<b>Well Error:</b>	0.00ft	<b>Output errors are at</b>	2.00 sigma
<b>Reference Wellbore</b>	P_EVERIST 25-32	<b>Database:</b>	EDM 2003.21 Single User Db
<b>Reference Design:</b>	PLAN #1 3-16-10 RHS	<b>Offset TVD Reference:</b>	Offset Datum

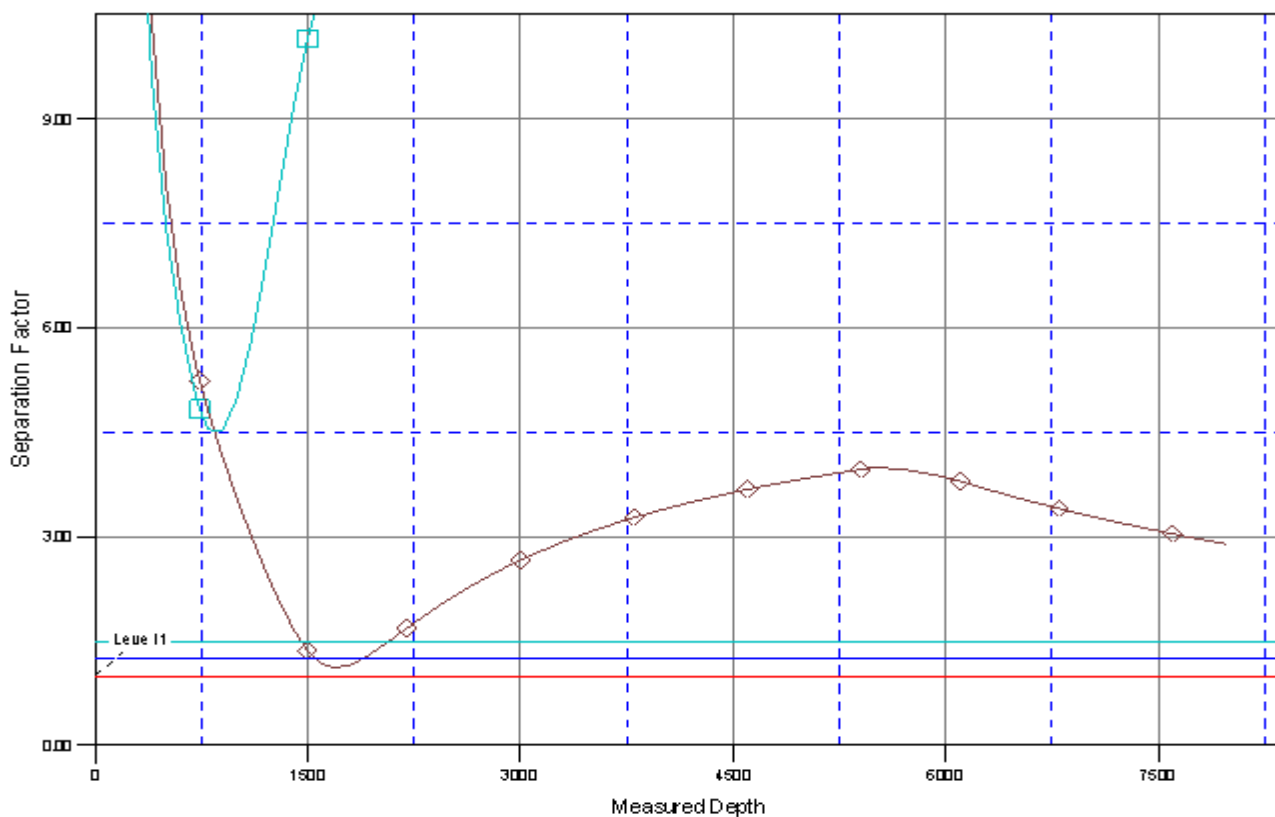
Reference Depths are relative to WELL @ 4823.00ft (Original Well Elev) Coordinates are relative to: P\_EVERIST 25-32  
Offset Depths are relative to Offset Datum Coordinate System is US State Plane 1983, Colorado Northern Zone  
Central Meridian is 105° 30' 0.000 W ° Grid Convergence at Surface is: 0.38°



<b>Company:</b>	US ROCKIES REGION PLANNING	<b>Local Co-ordinate Reference:</b>	Well P_EVERIST 25-32
<b>Project:</b>	COLORADO NORTHERN ZONE - 83	<b>TVD Reference:</b>	WELL @ 4823.00ft (Original Well Elev)
<b>Reference Site:</b>	WELD_EVERIST 4 PAD	<b>MD Reference:</b>	WELL @ 4823.00ft (Original Well Elev)
<b>Site Error:</b>	0.00ft	<b>North Reference:</b>	True
<b>Reference Well:</b>	P_EVERIST 25-32	<b>Survey Calculation Method:</b>	Minimum Curvature
<b>Well Error:</b>	0.00ft	<b>Output errors are at</b>	2.00 sigma
<b>Reference Wellbore</b>	P_EVERIST 25-32	<b>Database:</b>	EDM 2003.21 Single User Db
<b>Reference Design:</b>	PLAN #1 3-16-10 RHS	<b>Offset TVD Reference:</b>	Offset Datum

Reference Depths are relative to WELL @ 4823.00ft (Original Well Elev) Coordinates are relative to: P\_EVERIST 25-32  
Offset Depths are relative to Offset Datum Coordinate System is US State Plane 1983, Colorado Northern Zone  
Central Meridian is 105° 30' 0.000 W ° Grid Convergence at Surface is: 0.38°

## Separation Factor Plot



### LEGEND

ISP-NELSON #1032 EXISTING WD  
—◆— P\_EVERIST 40-32, P\_EVERIST 40-32, PLAN #1 3-16-10 RHS WD  
—■— P\_EVERIST 732, P\_EVERIST 732, PLAN #1 3-16-10 RHS WD