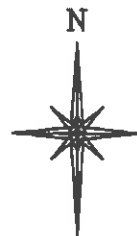
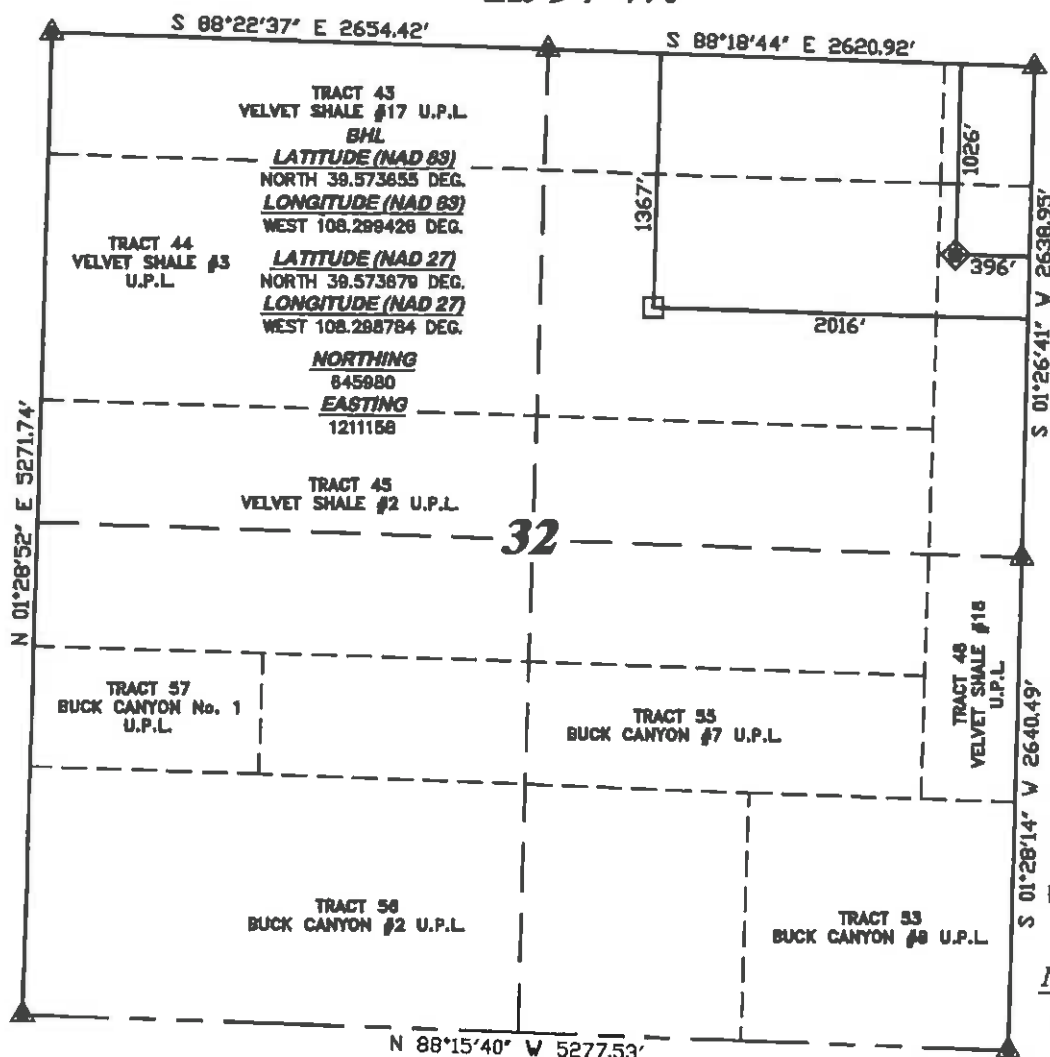


R. 97 W.



SCALE 1" = 1000'

T. 5 S.

LATITUDE (NAD 83)
NORTH 39.574599 DEG.
LONGITUDE (NAD 83)
WEST 108.293687 DEG.

LATITUDE (NAD 27)
NORTH 39.574622 DEG.
LONGITUDE (NAD 27)
WEST 108.293046 DEG.

NORTHING
646274.05
EASTING
1212785.10

BASIS OF BEARING/DATUM
SPCS CO CENTRAL NAD 27
BASED ON NGS TRIANGULATION
STATION "MARC"

NOTES

HIGH PLATEAU DESERT
EXISTING WELL FEATURES WITHIN
400' RADIUS OF WELL SITE.

GPS OPERATOR MARK BESSIE
OBSERVED A PDOP OF 2.8.
ALL GPS OBSERVATIONS ARE IN
COMPLIANCE WITH COGCC RULE No.215.

CHEVRON TR

332-32-597

UNGRADED ELEVATION:

8259.8'

BASIS OF ELEVATION: USGS
CONTROL POINT ELEVATION LOCATED
AT THE SW CORNER SECTION 28,
T5S, R97W, ELEVATION: 7913'



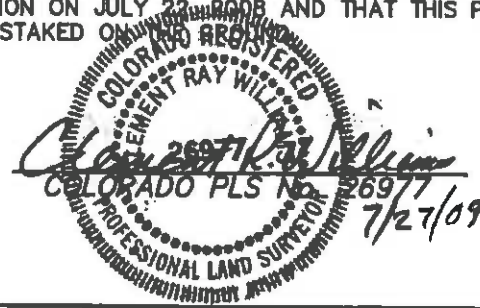
SURVEYOR'S STATEMENT

I, CLEMENT R. WILLIAMS, OF ROCK SPRINGS, WYOMING, HEREBY STATE: THIS MAP WAS MADE FROM NOTES TAKEN DURING AN ACTUAL FIELD SURVEY DONE UNDER MY DIRECT SUPERVISION ON JULY 22, 2008 AND THAT THIS PLAT CORRECTLY SHOWS THE LOCATION OF CHEVRON TR 332-32-597 AS STAKED ON THE GROUND.

LEGEND

- ◆ WELL LOCATION
- BOTTOM HOLE LOC. (APPROX)
- FOUND MONUMENT
- ▲ PREVIOUSLY FOUND MONUMENT

CHEVRON TR 41-32-597 PAD



(307) 963-5226

DRIFFIN & ASSOCIATES, INC.
1414 ELK ST., ROCK SPRINGS, WY 82801

DRAWN: 7/27/09 - MMM

SCALE: 1" = 1000'

REVISED: NA

DRG JOB No. 13208

EXHIBIT 1

**PLAT OF DRILLING LOCATION
FOR
WILLIAMS PRODUCTION RMT COMPANY**

**1026' F/NL & 396' F/EL, SECTION 32,
T. 5 S., R. 97 W., 6th P.M.
GARFIELD COUNTY, COLORADO**