



US ROCKIES REGION PLANNING

COLORADO NORTHERN ZONE - 83

WELD_ EVERIST 4 PAD

P_ EVERIST 40-32

P_ EVERIST 40-32

Plan: PLAN #1 3-16-10 RHS

Standard Planning Report

16 March, 2010





Azimuths to True North
Magnetic North: 9.09°
Magnetic Field
Strength: 53132.1nT
Dip Angle: 66.89°
Date: 3/16/2010
Model: IGRF2010

WELL DETAILS: P_EVERIST 40-32

+N/-S	+E/-W	Northing	Ground Level: Easting	4808.00 Latitude	Longitude	Slot
0.00	0.00	1309399.00	3164838.23	40° 10' 52.287 N	104° 54' 36.155 W	

FORMATION TOP DETAILS

TVDPath	MDPath	Formation
3700.00	3850.31	PARKMAN
4500.00	4702.88	SUSSEX
4660.00	4873.40	SHANNON
7064.00	7325.45	NIO A
7316.00	7577.45	CODELL
7702.00	7963.45	JSAND

SECTION DETAILS

MD	Inc	Azi	TVD	+N/-S	+E/-W	DLeg	TFace	VSec	Target
0.00	0.00	0.00	0.00	0.00	0.00	0.00	0.00	0.00	
740.00	0.00	0.00	740.00	0.00	0.00	0.00	0.00	0.00	
1751.31	20.23	76.40	1730.44	41.54	171.71	2.00	76.40	176.66	
5314.14	20.23	76.40	5073.56	331.18	1368.94	0.00	0.00	1408.43	
6325.45	0.00	0.00	6064.00	372.72	1540.64	2.00	180.00	1585.09	
8116.45	0.00	0.00	7855.00	372.72	1540.64	0.00	0.00	1585.09	PBHL_EVERIST 40-32(2580 FSL 50 FEL)50°TGT RAD

CASING DETAILS

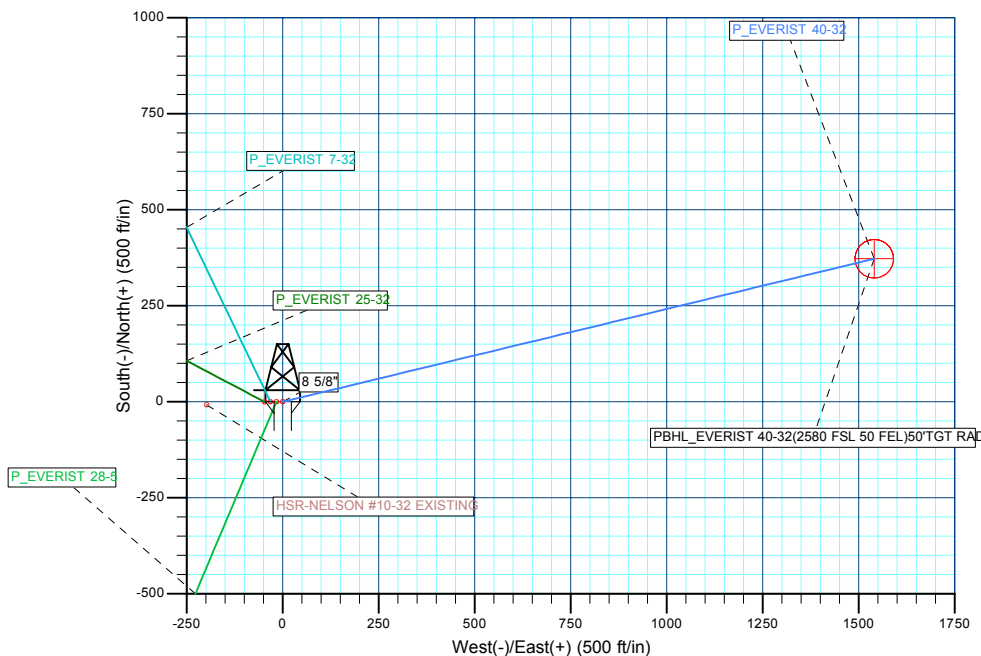
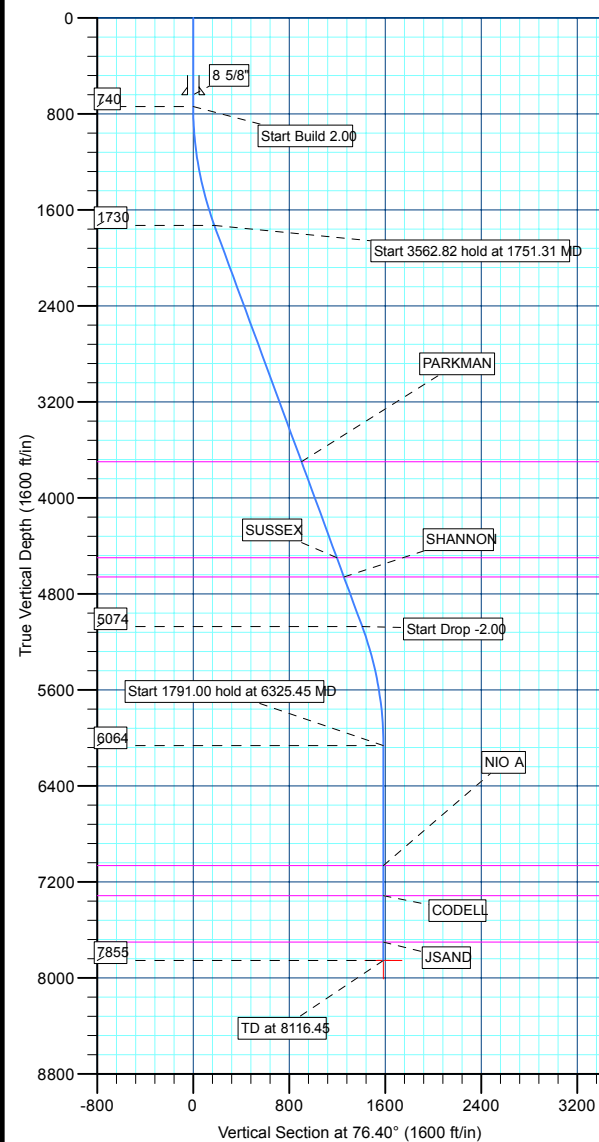
TVD	MD	Name	Size
640.00	640.00	8 5/8"	8.62

WELLBORE TARGET DETAILS (MAP CO-ORDINATES AND LAT/LONG)

Name	TVD	+N/-S	+E/-W	Northing	Easting	Latitude	Longitude	Shape
PBHL	7855.00	372.72	1540.64	1309781.96	3166376.36	40° 10' 55.970 N	104° 54' 16.304 W	Circle (Radius: 50.00)



KB ELEV: WELL @ 4823.00ft (Original Well Elev)
3RD ELEV: 4808.00



Database:	EDM 2003.21 Single User Db	Local Co-ordinate Reference:	Well P_EVERIST 40-32
Company:	US ROCKIES REGION PLANNING	TVD Reference:	WELL @ 4823.00ft (Original Well Elev)
Project:	COLORADO NORTHERN ZONE - 83	MD Reference:	WELL @ 4823.00ft (Original Well Elev)
Site:	WELD_EVERIST 4 PAD	North Reference:	True
Well:	P_EVERIST 40-32	Survey Calculation Method:	Minimum Curvature
Wellbore:	P_EVERIST 40-32		
Design:	PLAN #1 3-16-10 RHS		

Project	COLORADO NORTHERN ZONE - 83, KERR MCGEE OIL & GAS ONSHORE LP		
Map System:	US State Plane 1983	System Datum:	Mean Sea Level
Geo Datum:	North American Datum 1983		
Map Zone:	Colorado Northern Zone		

Site		WELD_EVERIST 4 PAD, SECTION 32 T3N R67W			
Site Position:		Northing:	1,309,398.33 ft	Latitude:	40° 10' 52.284 N
From:	Lat/Long	Easting:	3,164,791.57 ft	Longitude:	104° 54' 36.756 W
Position Uncertainty:	0.00 ft	Slot Radius:	in	Grid Convergence:	0.38 °

Well	P_EVERIST 40-32					
Well Position	+N/-S	0.35 ft	Northing:	1,309,399.00 ft	Latitude:	40° 10' 52.287 N
	+E/-W	46.66 ft	Easting:	3,164,838.23 ft	Longitude:	104° 54' 36.155 W
Position Uncertainty		0.00 ft	Wellhead Elevation:	ft	Ground Level:	4,808.00 ft

Wellbore	P_EVERIST 40-32				
Magnetics	Model Name	Sample Date	Declination (°)	Dip Angle (°)	Field Strength (nT)
	IGRF2010	3/16/2010	9.09	66.89	53,132

Design	PLAN #1 3-16-10 RHS			
Audit Notes:				
Version:	Phase:	PLAN	Tie On Depth:	0.00
Vertical Section:	Depth From (TVD) (ft)	+N/-S (ft)	+E/-W (ft)	Direction (°)
	0.00	0.00	0.00	76.40

Plan Sections										
Measured Depth (ft)	Inclination (°)	Azimuth (°)	Vertical Depth (ft)	+N/-S (ft)	+E/-W (ft)	Dogleg Rate (°/100ft)	Build Rate (°/100ft)	Turn Rate (°/100ft)	TFO (°)	Target
0.00	0.00	0.00	0.00	0.00	0.00	0.00	0.00	0.00	0.00	
740.00	0.00	0.00	740.00	0.00	0.00	0.00	0.00	0.00	0.00	
1,751.31	20.23	76.40	1,730.44	41.54	171.71	2.00	2.00	0.00	76.40	
5,314.14	20.23	76.40	5,073.56	331.18	1,368.94	0.00	0.00	0.00	0.00	
6,325.45	0.00	0.00	6,064.00	372.72	1,540.64	2.00	-2.00	0.00	180.00	
8,116.45	0.00	0.00	7,855.00	372.72	1,540.64	0.00	0.00	0.00	0.00	PBHL_EVERIST 40

Database:	EDM 2003.21 Single User Db	Local Co-ordinate Reference:	Well P_EVERIST 40-32
Company:	US ROCKIES REGION PLANNING	TVD Reference:	WELL @ 4823.00ft (Original Well Elev)
Project:	COLORADO NORTHERN ZONE - 83	MD Reference:	WELL @ 4823.00ft (Original Well Elev)
Site:	WELD_EVERIST 4 PAD	North Reference:	True
Well:	P_EVERIST 40-32	Survey Calculation Method:	Minimum Curvature
Wellbore:	P_EVERIST 40-32		
Design:	PLAN #1 3-16-10 RHS		

Planned Survey									
Measured Depth (ft)	Inclination (°)	Azimuth (°)	Vertical Depth (ft)	+N/-S (ft)	+E/-W (ft)	Vertical Section (ft)	Dogleg Rate (°/100ft)	Build Rate (°/100ft)	Turn Rate (°/100ft)
Start Build 2.00									
740.00	0.00	0.00	740.00	0.00	0.00	0.00	0.00	0.00	0.00
800.00	1.20	76.40	800.00	0.15	0.61	0.63	2.00	2.00	0.00
900.00	3.20	76.40	899.92	1.05	4.34	4.47	2.00	2.00	0.00
1,000.00	5.20	76.40	999.64	2.77	11.46	11.79	2.00	2.00	0.00
1,100.00	7.20	76.40	1,099.05	5.31	21.96	22.59	2.00	2.00	0.00
1,200.00	9.20	76.40	1,198.03	8.67	35.82	36.85	2.00	2.00	0.00
1,300.00	11.20	76.40	1,296.44	12.83	53.03	54.56	2.00	2.00	0.00
1,400.00	13.20	76.40	1,394.18	17.80	73.57	75.69	2.00	2.00	0.00
1,500.00	15.20	76.40	1,491.12	23.57	97.41	100.22	2.00	2.00	0.00
1,600.00	17.20	76.40	1,587.14	30.13	124.53	128.12	2.00	2.00	0.00
1,700.00	19.20	76.40	1,682.13	37.47	154.88	159.35	2.00	2.00	0.00
Start 3562.82 hold at 1751.31 MD									
1,751.31	20.23	76.40	1,730.44	41.54	171.71	176.66	2.00	2.00	0.00
1,800.00	20.23	76.40	1,776.12	45.50	188.07	193.49	0.00	0.00	0.00
1,900.00	20.23	76.40	1,869.96	53.63	221.67	228.06	0.00	0.00	0.00
2,000.00	20.23	76.40	1,963.79	61.76	255.27	262.64	0.00	0.00	0.00
2,100.00	20.23	76.40	2,057.62	69.89	288.88	297.21	0.00	0.00	0.00
2,200.00	20.23	76.40	2,151.46	78.02	322.48	331.78	0.00	0.00	0.00
2,300.00	20.23	76.40	2,245.29	86.15	356.08	366.35	0.00	0.00	0.00
2,400.00	20.23	76.40	2,339.12	94.28	389.69	400.93	0.00	0.00	0.00
2,500.00	20.23	76.40	2,432.96	102.40	423.29	435.50	0.00	0.00	0.00
2,600.00	20.23	76.40	2,526.79	110.53	456.89	470.07	0.00	0.00	0.00
2,700.00	20.23	76.40	2,620.62	118.66	490.50	504.65	0.00	0.00	0.00
2,800.00	20.23	76.40	2,714.46	126.79	524.10	539.22	0.00	0.00	0.00
2,900.00	20.23	76.40	2,808.29	134.92	557.70	573.79	0.00	0.00	0.00
3,000.00	20.23	76.40	2,902.12	143.05	591.31	608.36	0.00	0.00	0.00
3,100.00	20.23	76.40	2,995.96	151.18	624.91	642.94	0.00	0.00	0.00
3,200.00	20.23	76.40	3,089.79	159.31	658.51	677.51	0.00	0.00	0.00
3,300.00	20.23	76.40	3,183.63	167.44	692.12	712.08	0.00	0.00	0.00
3,400.00	20.23	76.40	3,277.46	175.57	725.72	746.66	0.00	0.00	0.00
3,500.00	20.23	76.40	3,371.29	183.70	759.32	781.23	0.00	0.00	0.00
3,600.00	20.23	76.40	3,465.13	191.83	792.93	815.80	0.00	0.00	0.00
3,700.00	20.23	76.40	3,558.96	199.96	826.53	850.37	0.00	0.00	0.00
3,800.00	20.23	76.40	3,652.79	208.09	860.13	884.95	0.00	0.00	0.00
PARKMAN									
3,850.31	20.23	76.40	3,700.00	212.18	877.04	902.34	0.00	0.00	0.00
3,900.00	20.23	76.40	3,746.63	216.22	893.74	919.52	0.00	0.00	0.00
4,000.00	20.23	76.40	3,840.46	224.35	927.34	954.09	0.00	0.00	0.00
4,100.00	20.23	76.40	3,934.29	232.48	960.94	988.67	0.00	0.00	0.00
4,200.00	20.23	76.40	4,028.13	240.61	994.55	1,023.24	0.00	0.00	0.00
4,300.00	20.23	76.40	4,121.96	248.74	1,028.15	1,057.81	0.00	0.00	0.00
4,400.00	20.23	76.40	4,215.79	256.87	1,061.76	1,092.38	0.00	0.00	0.00
4,500.00	20.23	76.40	4,309.63	265.00	1,095.36	1,126.96	0.00	0.00	0.00
4,600.00	20.23	76.40	4,403.46	273.13	1,128.96	1,161.53	0.00	0.00	0.00
4,700.00	20.23	76.40	4,497.29	281.26	1,162.57	1,196.10	0.00	0.00	0.00
SUSSEX									
4,702.88	20.23	76.40	4,500.00	281.49	1,163.53	1,197.10	0.00	0.00	0.00
4,800.00	20.23	76.40	4,591.13	289.38	1,196.17	1,230.68	0.00	0.00	0.00
SHANNON									
4,873.40	20.23	76.40	4,660.00	295.35	1,220.83	1,256.05	0.00	0.00	0.00
4,900.00	20.23	76.40	4,684.96	297.51	1,229.77	1,265.25	0.00	0.00	0.00
5,000.00	20.23	76.40	4,778.79	305.64	1,263.38	1,299.82	0.00	0.00	0.00

Database:	EDM 2003.21 Single User Db	Local Co-ordinate Reference:	Well P_EVERIST 40-32
Company:	US ROCKIES REGION PLANNING	TVD Reference:	WELL @ 4823.00ft (Original Well Elev)
Project:	COLORADO NORTHERN ZONE - 83	MD Reference:	WELL @ 4823.00ft (Original Well Elev)
Site:	WELD_EVERIST 4 PAD	North Reference:	True
Well:	P_EVERIST 40-32	Survey Calculation Method:	Minimum Curvature
Wellbore:	P_EVERIST 40-32		
Design:	PLAN #1 3-16-10 RHS		

Planned Survey

Measured Depth (ft)	Inclination (°)	Azimuth (°)	Vertical Depth (ft)	+N/-S (ft)	+E/-W (ft)	Vertical Section (ft)	Dogleg Rate (°/100ft)	Build Rate (°/100ft)	Turn Rate (°/100ft)
5,100.00	20.23	76.40	4,872.63	313.77	1,296.98	1,334.39	0.00	0.00	0.00
5,200.00	20.23	76.40	4,966.46	321.90	1,330.58	1,368.97	0.00	0.00	0.00
5,300.00	20.23	76.40	5,060.29	330.03	1,364.19	1,403.54	0.00	0.00	0.00
Start Drop -2.00									
5,314.14	20.23	76.40	5,073.56	331.18	1,368.94	1,408.43	0.00	0.00	0.00
5,400.00	18.51	76.40	5,154.56	337.88	1,396.61	1,436.90	2.00	-2.00	0.00
5,500.00	16.51	76.40	5,249.92	344.95	1,425.85	1,466.99	2.00	-2.00	0.00
5,600.00	14.51	76.40	5,346.28	351.24	1,451.84	1,493.72	2.00	-2.00	0.00
5,700.00	12.51	76.40	5,443.50	356.73	1,474.54	1,517.08	2.00	-2.00	0.00
5,800.00	10.51	76.40	5,541.49	361.42	1,493.94	1,537.03	2.00	-2.00	0.00
5,900.00	8.51	76.40	5,640.11	365.31	1,509.99	1,553.55	2.00	-2.00	0.00
6,000.00	6.51	76.40	5,739.25	368.38	1,522.69	1,566.62	2.00	-2.00	0.00
6,100.00	4.51	76.40	5,838.78	370.64	1,532.02	1,576.22	2.00	-2.00	0.00
6,200.00	2.51	76.40	5,938.59	372.08	1,537.97	1,582.34	2.00	-2.00	0.00
6,300.00	0.51	76.40	6,038.55	372.70	1,540.53	1,584.97	2.00	-2.00	0.00
Start 1791.00 hold at 6325.45 MD									
6,325.45	0.00	0.00	6,064.00	372.72	1,540.64	1,585.09	2.00	-2.00	-300.17
6,400.00	0.00	0.00	6,138.55	372.72	1,540.64	1,585.09	0.00	0.00	0.00
6,500.00	0.00	0.00	6,238.55	372.72	1,540.64	1,585.09	0.00	0.00	0.00
6,600.00	0.00	0.00	6,338.55	372.72	1,540.64	1,585.09	0.00	0.00	0.00
6,700.00	0.00	0.00	6,438.55	372.72	1,540.64	1,585.09	0.00	0.00	0.00
6,800.00	0.00	0.00	6,538.55	372.72	1,540.64	1,585.09	0.00	0.00	0.00
6,900.00	0.00	0.00	6,638.55	372.72	1,540.64	1,585.09	0.00	0.00	0.00
7,000.00	0.00	0.00	6,738.55	372.72	1,540.64	1,585.09	0.00	0.00	0.00
7,100.00	0.00	0.00	6,838.55	372.72	1,540.64	1,585.09	0.00	0.00	0.00
7,200.00	0.00	0.00	6,938.55	372.72	1,540.64	1,585.09	0.00	0.00	0.00
7,300.00	0.00	0.00	7,038.55	372.72	1,540.64	1,585.09	0.00	0.00	0.00
NIO A									
7,325.45	0.00	0.00	7,064.00	372.72	1,540.64	1,585.09	0.00	0.00	0.00
7,400.00	0.00	0.00	7,138.55	372.72	1,540.64	1,585.09	0.00	0.00	0.00
7,500.00	0.00	0.00	7,238.55	372.72	1,540.64	1,585.09	0.00	0.00	0.00
CODELL									
7,577.45	0.00	0.00	7,316.00	372.72	1,540.64	1,585.09	0.00	0.00	0.00
7,600.00	0.00	0.00	7,338.55	372.72	1,540.64	1,585.09	0.00	0.00	0.00
7,700.00	0.00	0.00	7,438.55	372.72	1,540.64	1,585.09	0.00	0.00	0.00
7,800.00	0.00	0.00	7,538.55	372.72	1,540.64	1,585.09	0.00	0.00	0.00
7,900.00	0.00	0.00	7,638.55	372.72	1,540.64	1,585.09	0.00	0.00	0.00
JSAND									
7,963.45	0.00	0.00	7,702.00	372.72	1,540.64	1,585.09	0.00	0.00	0.00
8,000.00	0.00	0.00	7,738.55	372.72	1,540.64	1,585.09	0.00	0.00	0.00
8,100.00	0.00	0.00	7,838.55	372.72	1,540.64	1,585.09	0.00	0.00	0.00
PBHL_EVERIST 40-32(2580 FSL 50 FEL)50°TGT RAD									
8,116.45	0.00	0.00	7,855.00	372.72	1,540.64	1,585.09	0.00	0.00	0.00

Database:	EDM 2003.21 Single User Db	Local Co-ordinate Reference:	Well P_EVERIST 40-32
Company:	US ROCKIES REGION PLANNING	TVD Reference:	WELL @ 4823.00ft (Original Well Elev)
Project:	COLORADO NORTHERN ZONE - 83	MD Reference:	WELL @ 4823.00ft (Original Well Elev)
Site:	WELD_EVERIST 4 PAD	North Reference:	True
Well:	P_EVERIST 40-32	Survey Calculation Method:	Minimum Curvature
Wellbore:	P_EVERIST 40-32		
Design:	PLAN #1 3-16-10 RHS		

Design Targets									
Target Name									
- hit/miss target	Dip Angle	Dip Dir.	TVD	+N/-S	+E/-W	Northing	Easting	Latitude	Longitude
- Shape	(°)	(°)	(ft)	(ft)	(ft)	(ft)	(ft)		
PBHL_EVERIST 40-3	0.00	0.00	7,855.00	372.72	1,540.64	1,309,781.96	3,166,376.36	40° 10' 55.970 N	104° 54' 16.304 W
- plan hits target center									
- Circle (radius 50.00)									

Casing Points					
	Measured Depth	Vertical Depth		Casing Diameter	Hole Diameter
	(ft)	(ft)	Name	(in)	(in)
	640.00	640.00	8 5/8"	8.62	11.00

Formations						
	Measured Depth	Vertical Depth			Dip	Dip Direction
	(ft)	(ft)	Name	Lithology	(°)	(°)
	3,850.31	3,700.00	PARKMAN			
	4,702.88	4,500.00	SUSSEX			
	4,873.40	4,660.00	SHANNON			
	7,325.45	7,064.00	NIO A			
	7,577.45	7,316.00	CODELL			
	7,963.45	7,702.00	JSAND			

Plan Annotations					
	Measured Depth	Vertical Depth	Local Coordinates		
	(ft)	(ft)	+N/-S	+E/-W	Comment
	(ft)	(ft)	(ft)	(ft)	
	740.00	740.00	0.00	0.00	Start Build 2.00
	1,751.31	1,730.44	41.54	171.71	Start 3562.82 hold at 1751.31 MD
	5,314.14	5,073.56	331.18	1,368.94	Start Drop -2.00
	6,325.45	6,064.00	372.72	1,540.64	Start 1791.00 hold at 6325.45 MD
	8,116.45	7,855.00	372.72	1,540.64	TD at 8116.45



US ROCKIES REGION PLANNING

**COLORADO NORTHERN ZONE - 83
WELD_EVERIST 4 PAD
P_EVERIST 40-32**

**P_EVERIST 40-32
PLAN #1 3-16-10 RHS**

Anticollision Report

16 March, 2010



Company:	US ROCKIES REGION PLANNING	Local Co-ordinate Reference:	Well P_EVERIST 40-32
Project:	COLORADO NORTHERN ZONE - 83	TVD Reference:	WELL @ 4823.00ft (Original Well Elev)
Reference Site:	WELD_EVERIST 4 PAD	MD Reference:	WELL @ 4823.00ft (Original Well Elev)
Site Error:	0.00ft	North Reference:	True
Reference Well:	P_EVERIST 40-32	Survey Calculation Method:	Minimum Curvature
Well Error:	0.00ft	Output errors are at	2.00 sigma
Reference Wellbore	P_EVERIST 40-32	Database:	EDM 2003.21 Single User Db
Reference Design:	PLAN #1 3-16-10 RHS	Offset TVD Reference:	Offset Datum

Reference	PLAN #1 3-16-10 RHS		
Filter type:	NO GLOBAL FILTER: Using user defined selection & filtering criteria		
Interpolation Method:	Stations	Error Model:	ISCWSA
Depth Range:	0.00 to 20,000.00ft	Scan Method:	Closest Approach 3D
Results Limited by:	Maximum center-center distance of 10,000.00ft	Error Surface:	Elliptical Conic
Warning Levels Evaluated at:	2.00 Sigma		

Survey Tool Program	Date 3/16/2010			
From (ft)	To (ft)	Survey (Wellbore)	Tool Name	Description
0.00	8,116.45	PLAN #1 3-16-10 RHS (P_EVERIST 40-32)	MWD	MWD - Standard

Summary						
Site Name	Reference Measured Depth (ft)	Offset Measured Depth (ft)	Distance Between Centres (ft)	Distance Between Ellipses (ft)	Separation Factor	Warning
Offset Well - Wellbore - Design						
WELD_EVERIST 4 PAD						
HSR-NELSON #10-32 EXISTING - HSR-NELSON #10-32	740.00	740.00	197.69	168.86	6.856	CC
HSR-NELSON #10-32 EXISTING - HSR-NELSON #10-32	900.00	899.92	202.07	166.56	5.689	ES
HSR-NELSON #10-32 EXISTING - HSR-NELSON #10-32	1,300.00	1,296.44	251.41	200.04	4.894	SF
P_EVERIST 25-32 - P_EVERIST 25-32 - PLAN #1 3-16-10	740.00	740.00	46.66	43.59	15.209	CC, ES
P_EVERIST 25-32 - P_EVERIST 25-32 - PLAN #1 3-16-10	800.00	799.13	47.82	44.50	14.386	SF
P_EVERIST 28-5 - P_EVERIST 28-5 - PLAN #1 3-16-10	300.00	300.00	15.93	14.84	14.614	CC, ES
P_EVERIST 28-5 - P_EVERIST 28-5 - PLAN #1 3-16-10	500.00	499.27	19.59	17.66	10.137	SF
P_EVERIST 7-32 - P_EVERIST 7-32 - PLAN #1 3-16-10	740.00	740.00	31.85	28.79	10.383	CC, ES
P_EVERIST 7-32 - P_EVERIST 7-32 - PLAN #1 3-16-10	800.00	799.69	32.74	29.41	9.837	SF

Offset Design WELD_EVERIST 4 PAD - HSR-NELSON #10-32 EXISTING - HSR-NELSON #10-32 EXISTING - HSR-NELSON #10-32 EXISTING - HSR-NELSON #10-32 EXISTING													Offset Site Error: 0.00 ft
Survey Program: 0-UNKNOWN													Offset Well Error: 0.00 ft
Reference	Offset	Semi Major Axis		Distance									
Measured Depth (ft)	Vertical Depth (ft)	Measured Depth (ft)	Vertical Depth (ft)	Reference (ft)	Offset (ft)	Highside Toolface (°)	Offset Wellbore Centre +N/-S (ft)	Offset Wellbore Centre +E/-W (ft)	Between Centres (ft)	Between Ellipses (ft)	Minimum Separation (ft)	Separation Factor	Warning
0.00	0.00	0.00	0.00	0.00	0.00	-92.22	-7.66	-197.54	197.69				
100.00	100.00	100.00	100.00	0.10	1.70	-92.22	-7.66	-197.54	197.69	195.90	1.80	110.102	
200.00	200.00	200.00	200.00	0.32	5.70	-92.22	-7.66	-197.54	197.69	191.67	6.02	32.837	
300.00	300.00	300.00	300.00	0.55	9.70	-92.22	-7.66	-197.54	197.69	187.45	10.25	19.296	
400.00	400.00	400.00	400.00	0.77	13.70	-92.22	-7.66	-197.54	197.69	183.22	14.47	13.662	
500.00	500.00	500.00	500.00	0.99	17.70	-92.22	-7.66	-197.54	197.69	179.00	18.69	10.575	
600.00	600.00	600.00	600.00	1.22	21.70	-92.22	-7.66	-197.54	197.69	174.77	22.92	8.626	
700.00	700.00	700.00	700.00	1.44	25.70	-92.22	-7.66	-197.54	197.69	170.55	27.14	7.283	
740.00	740.00	740.00	740.00	1.53	27.30	-92.22	-7.66	-197.54	197.69	168.86	28.83	6.856	CC
800.00	800.00	800.00	800.00	1.66	29.70	-168.65	-7.66	-197.54	198.31	166.95	31.36	6.324	
900.00	899.92	899.92	899.92	1.87	33.70	-168.85	-7.66	-197.54	202.07	166.56	35.52	5.689	ES
1,000.00	999.64	999.64	999.64	2.09	37.69	-169.21	-7.66	-197.54	209.26	169.65	39.62	5.282	
1,100.00	1,099.05	1,099.05	1,099.05	2.34	41.66	-169.70	-7.66	-197.54	219.88	176.24	43.64	5.039	
1,200.00	1,198.03	1,198.03	1,198.03	2.61	45.62	-170.28	-7.66	-197.54	233.93	186.37	47.56	4.918	
1,300.00	1,296.44	1,296.44	1,296.44	2.92	49.56	-170.90	-7.66	-197.54	251.41	200.04	51.37	4.894	SF
1,400.00	1,394.18	1,394.18	1,394.18	3.28	53.47	-171.54	-7.66	-197.54	272.30	217.26	55.05	4.947	
1,500.00	1,491.12	1,491.12	1,491.12	3.70	57.34	-172.17	-7.66	-197.54	296.60	238.03	58.57	5.064	
1,600.00	1,587.14	1,587.14	1,587.14	4.17	61.19	-172.77	-7.66	-197.54	324.28	262.34	61.93	5.236	

CC - Min centre to center distance or convergent point, SF - min separation factor, ES - min ellipse separation

Company:	US ROCKIES REGION PLANNING	Local Co-ordinate Reference:	Well P_EVERIST 40-32
Project:	COLORADO NORTHERN ZONE - 83	TVD Reference:	WELL @ 4823.00ft (Original Well Elev)
Reference Site:	WELD_EVERIST 4 PAD	MD Reference:	WELL @ 4823.00ft (Original Well Elev)
Site Error:	0.00ft	North Reference:	True
Reference Well:	P_EVERIST 40-32	Survey Calculation Method:	Minimum Curvature
Well Error:	0.00ft	Output errors are at	2.00 sigma
Reference Wellbore	P_EVERIST 40-32	Database:	EDM 2003.21 Single User Db
Reference Design:	PLAN #1 3-16-10 RHS	Offset TVD Reference:	Offset Datum

Offset Design WELD_EVERIST 4 PAD - HSR-NELSON #10-32 EXISTING - HSR-NELSON #10-32 EXISTING - HSR-												Offset Site Error:	0.00 ft
Survey Program: 0-UNKNOWN												Offset Well Error:	0.00 ft
Reference	Offset	Semi Major Axis			Distance								Warning
Measured Depth (ft)	Vertical Depth (ft)	Measured Depth (ft)	Vertical Depth (ft)	Reference (ft)	Offset (ft)	Highside Toolface (°)	Offset Wellbore Centre +N/-S (ft)	+E/-W (ft)	Between Centres (ft)	Between Ellipses (ft)	Minimum Separation (ft)	Separation Factor	
1,700.00	1,682.13	1,682.13	1,682.13	4.72	64.99	-173.33	-7.66	-197.54	355.30	290.19	65.11	5.457	
1,751.31	1,730.44	1,730.44	1,730.44	5.03	66.92	-173.60	-7.66	-197.54	372.51	305.84	66.67	5.587	
1,800.00	1,776.12	1,776.12	1,776.12	5.33	68.74	-173.87	-7.66	-197.54	389.25	320.74	68.52	5.681	
1,900.00	1,869.96	1,869.96	1,869.96	5.97	72.50	-174.37	-7.66	-197.54	423.67	351.35	72.32	5.858	
2,000.00	1,963.79	1,963.79	1,963.79	6.63	76.25	-174.80	-7.66	-197.54	458.10	381.97	76.13	6.017	
2,100.00	2,057.62	2,057.62	2,057.62	7.29	80.00	-175.16	-7.66	-197.54	492.56	412.61	79.95	6.161	
2,200.00	2,151.46	2,151.46	2,151.46	7.97	83.76	-175.48	-7.66	-197.54	527.03	443.26	83.77	6.291	
2,300.00	2,245.29	2,245.29	2,245.29	8.65	87.51	-175.76	-7.66	-197.54	561.52	473.92	87.59	6.410	
2,400.00	2,339.12	2,339.12	2,339.12	9.34	91.26	-176.00	-7.66	-197.54	596.01	504.59	91.42	6.519	
2,500.00	2,432.96	2,432.96	2,432.96	10.03	95.02	-176.22	-7.66	-197.54	630.51	535.26	95.25	6.619	
2,600.00	2,526.79	2,526.79	2,526.79	10.73	98.77	-176.42	-7.66	-197.54	665.02	565.94	99.09	6.711	
2,700.00	2,620.62	2,620.62	2,620.62	11.43	102.52	-176.59	-7.66	-197.54	699.54	596.62	102.92	6.797	
2,800.00	2,714.46	2,714.46	2,714.46	12.13	106.28	-176.75	-7.66	-197.54	734.06	627.30	106.76	6.876	
2,900.00	2,808.29	2,808.29	2,808.29	12.83	110.03	-176.90	-7.66	-197.54	768.59	657.99	110.60	6.949	
3,000.00	2,902.12	2,902.12	2,902.12	13.54	113.78	-177.03	-7.66	-197.54	803.12	688.68	114.44	7.018	
3,100.00	2,995.96	2,995.96	2,995.96	14.24	117.54	-177.16	-7.66	-197.54	837.65	719.37	118.28	7.082	
3,200.00	3,089.79	3,089.79	3,089.79	14.95	121.29	-177.27	-7.66	-197.54	872.19	750.06	122.12	7.142	
3,300.00	3,183.63	3,183.63	3,183.63	15.66	125.05	-177.37	-7.66	-197.54	906.73	780.76	125.97	7.198	
3,400.00	3,277.46	3,277.46	3,277.46	16.37	128.80	-177.47	-7.66	-197.54	941.27	811.46	129.81	7.251	
3,500.00	3,371.29	3,371.29	3,371.29	17.08	132.55	-177.56	-7.66	-197.54	975.81	842.16	133.66	7.301	
3,600.00	3,465.13	3,465.13	3,465.13	17.79	136.31	-177.64	-7.66	-197.54	1,010.36	872.86	137.50	7.348	
3,700.00	3,558.96	3,558.96	3,558.96	18.50	140.06	-177.72	-7.66	-197.54	1,044.91	903.56	141.35	7.392	
3,800.00	3,652.79	3,652.79	3,652.79	19.21	143.81	-177.79	-7.66	-197.54	1,079.46	934.26	145.19	7.435	
3,900.00	3,746.63	3,746.63	3,746.63	19.92	147.57	-177.86	-7.66	-197.54	1,114.01	964.97	149.04	7.474	
4,000.00	3,840.46	3,840.46	3,840.46	20.64	151.32	-177.93	-7.66	-197.54	1,148.56	995.67	152.89	7.512	
4,100.00	3,934.29	3,934.29	3,934.29	21.35	155.07	-177.99	-7.66	-197.54	1,183.11	1,026.38	156.74	7.548	
4,200.00	4,028.13	4,028.13	4,028.13	22.06	158.83	-178.04	-7.66	-197.54	1,217.67	1,057.08	160.59	7.583	
4,300.00	4,121.96	4,121.96	4,121.96	22.78	162.58	-178.10	-7.66	-197.54	1,252.22	1,087.79	164.43	7.615	
4,400.00	4,215.79	4,215.79	4,215.79	23.49	166.33	-178.15	-7.66	-197.54	1,286.78	1,118.50	168.28	7.646	
4,500.00	4,309.63	4,309.63	4,309.63	24.20	170.09	-178.20	-7.66	-197.54	1,321.34	1,149.20	172.13	7.676	
4,600.00	4,403.46	4,403.46	4,403.46	24.92	173.84	-178.24	-7.66	-197.54	1,355.90	1,179.91	175.98	7.705	
4,700.00	4,497.29	4,497.29	4,497.29	25.63	177.59	-178.29	-7.66	-197.54	1,390.46	1,210.62	179.83	7.732	
4,800.00	4,591.13	4,591.13	4,591.13	26.35	181.35	-178.33	-7.66	-197.54	1,425.01	1,241.33	183.68	7.758	
4,900.00	4,684.96	4,684.96	4,684.96	27.06	185.10	-178.37	-7.66	-197.54	1,459.58	1,272.04	187.53	7.783	
5,000.00	4,778.79	4,778.79	4,778.79	27.78	188.85	-178.41	-7.66	-197.54	1,494.14	1,302.75	191.38	7.807	
5,100.00	4,872.63	4,872.63	4,872.63	28.49	192.61	-178.44	-7.66	-197.54	1,528.70	1,333.46	195.24	7.830	
5,200.00	4,966.46	4,966.46	4,966.46	29.21	196.36	-178.48	-7.66	-197.54	1,563.26	1,364.17	199.09	7.852	
5,300.00	5,060.29	5,060.29	5,060.29	29.92	200.11	-178.51	-7.66	-197.54	1,597.82	1,394.88	202.94	7.873	
5,314.14	5,073.56	5,073.56	5,073.56	30.03	200.64	-178.51	-7.66	-197.54	1,602.71	1,399.23	203.48	7.876	
5,400.00	5,154.56	5,154.56	5,154.56	30.56	203.88	-178.55	-7.66	-197.54	1,631.17	1,422.36	208.81	7.812	
5,500.00	5,249.92	5,249.92	5,249.92	31.05	207.70	-178.60	-7.66	-197.54	1,661.25	1,446.37	214.88	7.731	
5,600.00	5,346.28	5,346.28	5,346.28	31.50	211.55	-178.63	-7.66	-197.54	1,687.98	1,467.19	220.79	7.645	
5,700.00	5,443.50	5,443.50	5,443.50	31.90	215.44	-178.66	-7.66	-197.54	1,711.33	1,484.81	226.52	7.555	
5,800.00	5,541.49	5,541.49	5,541.49	32.24	219.36	-178.69	-7.66	-197.54	1,731.28	1,499.23	232.05	7.461	
5,900.00	5,640.11	5,640.11	5,640.11	32.54	223.30	-178.71	-7.66	-197.54	1,747.79	1,510.44	237.35	7.364	
6,000.00	5,739.25	5,739.25	5,739.25	32.79	227.27	-178.72	-7.66	-197.54	1,760.86	1,518.45	242.41	7.264	
6,100.00	5,838.78	5,838.78	5,838.78	32.99	231.25	-178.73	-7.66	-197.54	1,770.45	1,523.25	247.21	7.162	
6,200.00	5,938.59	5,938.59	5,938.59	33.14	235.24	-178.74	-7.66	-197.54	1,776.57	1,524.85	251.72	7.058	
6,300.00	6,038.55	6,038.55	6,038.55	33.25	239.24	-178.74	-7.66	-197.54	1,779.21	1,523.28	255.93	6.952	
6,325.45	6,064.00	6,064.00	6,064.00	33.27	240.26	-102.34	-7.66	-197.54	1,779.32	1,522.37	256.95	6.925	
6,400.00	6,138.55	6,138.55	6,138.55	33.33	243.24	-102.34	-7.66	-197.54	1,779.32	1,519.27	260.05	6.842	
6,500.00	6,238.55	6,238.55	6,238.55	33.42	247.24	-102.34	-7.66	-197.54	1,779.32	1,515.11	264.21	6.735	

CC - Min centre to center distance or convergent point, SF - min separation factor, ES - min ellipse separation

Company:	US ROCKIES REGION PLANNING	Local Co-ordinate Reference:	Well P_EVERIST 40-32
Project:	COLORADO NORTHERN ZONE - 83	TVD Reference:	WELL @ 4823.00ft (Original Well Elev)
Reference Site:	WELD_EVERIST 4 PAD	MD Reference:	WELL @ 4823.00ft (Original Well Elev)
Site Error:	0.00ft	North Reference:	True
Reference Well:	P_EVERIST 40-32	Survey Calculation Method:	Minimum Curvature
Well Error:	0.00ft	Output errors are at	2.00 sigma
Reference Wellbore	P_EVERIST 40-32	Database:	EDM 2003.21 Single User Db
Reference Design:	PLAN #1 3-16-10 RHS	Offset TVD Reference:	Offset Datum

Offset Design WELD_EVERIST 4 PAD - HSR-NELSON #10-32 EXISTING - HSR-NELSON #10-32 EXISTING - HSR-												Offset Site Error:	0.00 ft
Survey Program: 0-UNKNOWN												Offset Well Error:	0.00 ft
Reference	Offset	Semi Major Axis		Distance									
Measured Depth (ft)	Vertical Depth (ft)	Measured Depth (ft)	Vertical Depth (ft)	Reference (ft)	Offset (ft)	Highside Toolface (°)	Offset Wellbore Centre +N/-S (ft)	+E/-W (ft)	Between Centres (ft)	Between Ellipses (ft)	Minimum Separation (ft)	Separation Factor	Warning
6,600.00	6,338.55	6,338.55	6,338.55	33.51	251.24	-102.34	-7.66	-197.54	1,779.32	1,510.95	268.37	6.630	
6,700.00	6,438.55	6,438.55	6,438.55	33.60	255.24	-102.34	-7.66	-197.54	1,779.32	1,506.79	272.53	6.529	
6,800.00	6,538.55	6,538.55	6,538.55	33.69	259.24	-102.34	-7.66	-197.54	1,779.32	1,502.63	276.69	6.431	
6,900.00	6,638.55	6,638.55	6,638.55	33.78	263.24	-102.34	-7.66	-197.54	1,779.32	1,498.46	280.85	6.335	
7,000.00	6,738.55	6,738.55	6,738.55	33.88	267.24	-102.34	-7.66	-197.54	1,779.32	1,494.30	285.02	6.243	
7,100.00	6,838.55	6,838.55	6,838.55	33.97	271.24	-102.34	-7.66	-197.54	1,779.32	1,490.13	289.19	6.153	
7,200.00	6,938.55	6,938.55	6,938.55	34.07	275.24	-102.34	-7.66	-197.54	1,779.32	1,485.96	293.36	6.065	
7,300.00	7,038.55	7,038.55	7,038.55	34.17	279.24	-102.34	-7.66	-197.54	1,779.32	1,481.79	297.52	5.980	
7,400.00	7,138.55	7,138.55	7,138.55	34.27	283.24	-102.34	-7.66	-197.54	1,779.32	1,477.62	301.70	5.898	
7,500.00	7,238.55	7,238.55	7,238.55	34.37	287.24	-102.34	-7.66	-197.54	1,779.32	1,473.45	305.87	5.817	
7,600.00	7,338.55	7,338.55	7,338.55	34.47	291.24	-102.34	-7.66	-197.54	1,779.32	1,469.28	310.04	5.739	
7,700.00	7,438.55	7,438.55	7,438.55	34.57	295.24	-102.34	-7.66	-197.54	1,779.32	1,465.11	314.21	5.663	
7,800.00	7,538.55	7,538.55	7,538.55	34.68	299.24	-102.34	-7.66	-197.54	1,779.32	1,460.93	318.39	5.589	
7,900.00	7,638.55	7,638.55	7,638.55	34.78	303.24	-102.34	-7.66	-197.54	1,779.32	1,456.75	322.56	5.516	
8,000.00	7,738.55	7,738.55	7,738.55	34.89	307.24	-102.34	-7.66	-197.54	1,779.32	1,452.58	326.74	5.446	
8,100.00	7,838.55	7,838.55	7,838.55	35.00	311.24	-102.34	-7.66	-197.54	1,779.32	1,448.40	330.92	5.377	
8,116.45	7,855.00	7,855.00	7,855.00	35.01	311.90	-102.34	-7.66	-197.54	1,779.32	1,447.71	331.61	5.366	

Company:	US ROCKIES REGION PLANNING	Local Co-ordinate Reference:	Well P_EVERIST 40-32
Project:	COLORADO NORTHERN ZONE - 83	TVD Reference:	WELL @ 4823.00ft (Original Well Elev)
Reference Site:	WELD_EVERIST 4 PAD	MD Reference:	WELL @ 4823.00ft (Original Well Elev)
Site Error:	0.00ft	North Reference:	True
Reference Well:	P_EVERIST 40-32	Survey Calculation Method:	Minimum Curvature
Well Error:	0.00ft	Output errors are at	2.00 sigma
Reference Wellbore	P_EVERIST 40-32	Database:	EDM 2003.21 Single User Db
Reference Design:	PLAN #1 3-16-10 RHS	Offset TVD Reference:	Offset Datum

Offset Design WELD_EVERIST 4 PAD - P_EVERIST 25-32 - P_EVERIST 25-32 - PLAN #1 3-16-10 RHS												Offset Site Error:	0.00 ft
Survey Program: 0-MWD												Offset Well Error:	0.00 ft
Measured Depth (ft)	Vertical Depth (ft)	Measured Depth (ft)	Vertical Depth (ft)	Reference (ft)	Offset (ft)	Highside Toolface (°)	Offset Wellbore Centre +N/-S (ft)	+E/-W (ft)	Between Centres (ft)	Between Ellipses (ft)	Minimum Separation (ft)	Separation Factor	Warning
0.00	0.00	0.00	0.00	0.00	0.00	-90.43	-0.35	-46.66	46.66				
100.00	100.00	100.00	100.00	0.10	0.10	-90.43	-0.35	-46.66	46.66	46.47	0.19	244.242	
200.00	200.00	200.00	200.00	0.32	0.32	-90.43	-0.35	-46.66	46.66	46.02	0.64	72.844	
300.00	300.00	300.00	300.00	0.55	0.55	-90.43	-0.35	-46.66	46.66	45.57	1.09	42.805	
400.00	400.00	400.00	400.00	0.77	0.77	-90.43	-0.35	-46.66	46.66	45.12	1.54	30.307	
500.00	500.00	500.00	500.00	0.99	0.99	-90.43	-0.35	-46.66	46.66	44.67	1.99	23.458	
600.00	600.00	600.00	600.00	1.22	1.22	-90.43	-0.35	-46.66	46.66	44.22	2.44	19.134	
700.00	700.00	700.00	700.00	1.44	1.44	-90.43	-0.35	-46.66	46.66	43.77	2.89	16.156	
740.00	740.00	740.00	740.00	1.53	1.53	-90.43	-0.35	-46.66	46.66	43.59	3.07	15.209 CC, ES	
800.00	800.00	799.13	799.13	1.66	1.66	-166.65	-0.07	-47.20	47.82	44.50	3.32	14.386 SF	
900.00	899.92	897.32	897.24	1.87	1.87	-165.70	1.67	-50.48	54.89	51.16	3.73	14.703	
1,000.00	999.64	994.52	994.19	2.09	2.09	-164.42	4.93	-56.65	68.36	64.22	4.14	16.500	
1,100.00	1,099.05	1,090.17	1,089.30	2.34	2.33	-163.22	9.63	-65.56	88.16	83.61	4.55	19.363	
1,200.00	1,198.03	1,183.71	1,181.94	2.61	2.58	-162.23	15.67	-76.98	114.16	109.19	4.96	22.997	
1,300.00	1,296.44	1,274.66	1,271.57	2.92	2.86	-161.45	22.89	-90.65	146.16	140.78	5.38	27.185	
1,400.00	1,394.18	1,362.59	1,357.70	3.28	3.16	-160.82	31.13	-106.24	183.96	178.16	5.79	31.759	
1,500.00	1,491.12	1,450.51	1,443.35	3.70	3.50	-160.32	40.40	-123.79	226.93	220.71	6.22	36.487	
1,600.00	1,587.14	1,539.21	1,529.70	4.17	3.86	-160.08	49.87	-141.72	273.09	266.43	6.66	41.006	
1,700.00	1,682.13	1,626.34	1,614.52	4.72	4.23	-160.03	59.18	-159.33	322.13	315.03	7.11	45.324	
1,751.31	1,730.44	1,670.40	1,657.42	5.03	4.43	-160.04	63.88	-168.23	348.41	341.07	7.34	47.467	
1,800.00	1,776.12	1,711.99	1,697.91	5.33	4.61	-160.24	68.33	-176.64	373.69	366.10	7.60	49.188	
1,900.00	1,869.96	1,797.42	1,781.07	5.97	4.99	-160.59	77.45	-193.90	425.64	417.50	8.14	52.318	
2,000.00	1,963.79	1,882.84	1,864.24	6.63	5.37	-160.86	86.57	-211.17	477.59	468.91	8.69	54.990	
2,100.00	2,057.62	1,968.27	1,947.40	7.29	5.77	-161.08	95.69	-228.43	529.55	520.31	9.24	57.293	
2,200.00	2,151.46	2,053.69	2,030.56	7.97	6.16	-161.26	104.81	-245.70	581.51	571.71	9.81	59.292	
2,300.00	2,245.29	2,139.12	2,113.73	8.65	6.56	-161.41	113.94	-262.96	633.48	623.10	10.38	61.040	
2,400.00	2,339.12	2,224.55	2,196.89	9.34	6.96	-161.53	123.06	-280.23	685.45	674.50	10.95	62.578	
2,500.00	2,432.96	2,309.97	2,280.06	10.03	7.36	-161.64	132.18	-297.49	737.42	725.89	11.53	63.940	
2,600.00	2,526.79	2,395.40	2,363.22	10.73	7.77	-161.74	141.30	-314.76	789.40	777.28	12.12	65.153	
2,700.00	2,620.62	2,480.82	2,446.39	11.43	8.18	-161.82	150.43	-332.02	841.37	828.67	12.70	66.238	
2,800.00	2,714.46	2,566.25	2,529.55	12.13	8.58	-161.89	159.55	-349.29	893.35	880.06	13.29	67.215	
2,900.00	2,808.29	2,651.68	2,612.72	12.83	8.99	-161.96	168.67	-366.55	945.32	931.44	13.88	68.098	
3,000.00	2,902.12	2,737.10	2,695.88	13.54	9.40	-162.02	177.79	-383.82	997.30	982.83	14.47	68.899	
3,100.00	2,995.96	2,822.53	2,779.04	14.24	9.81	-162.07	186.92	-401.08	1,049.28	1,034.21	15.07	69.630	
3,200.00	3,089.79	2,907.95	2,862.21	14.95	10.22	-162.12	196.04	-418.35	1,101.26	1,085.59	15.67	70.298	
3,300.00	3,183.63	2,993.38	2,945.37	15.66	10.64	-162.16	205.16	-435.61	1,153.24	1,136.98	16.26	70.911	
3,400.00	3,277.46	3,078.81	3,028.54	16.37	11.05	-162.20	214.28	-452.88	1,205.22	1,188.36	16.86	71.475	
3,500.00	3,371.29	3,164.23	3,111.70	17.08	11.46	-162.24	223.40	-470.14	1,257.20	1,239.74	17.46	71.996	
3,600.00	3,465.13	3,249.66	3,194.87	17.79	11.88	-162.27	232.53	-487.41	1,309.18	1,291.12	18.06	72.478	
3,700.00	3,558.96	3,335.08	3,278.03	18.50	12.29	-162.30	241.65	-504.67	1,361.16	1,342.50	18.66	72.926	
3,800.00	3,652.79	3,420.51	3,361.19	19.21	12.71	-162.33	250.77	-521.94	1,413.14	1,393.87	19.27	73.343	
3,900.00	3,746.63	3,505.94	3,444.36	19.92	13.12	-162.35	259.89	-539.20	1,465.12	1,445.25	19.87	73.732	
4,000.00	3,840.46	3,591.36	3,527.52	20.64	13.54	-162.38	269.02	-556.47	1,517.10	1,496.63	20.47	74.096	
4,100.00	3,934.29	3,676.79	3,610.69	21.35	13.95	-162.40	278.14	-573.73	1,569.09	1,548.01	21.08	74.436	
4,200.00	4,028.13	3,762.21	3,693.85	22.06	14.37	-162.42	287.26	-590.99	1,621.07	1,599.38	21.68	74.756	
4,300.00	4,121.96	3,847.64	3,777.02	22.78	14.79	-162.44	296.38	-608.26	1,673.05	1,650.76	22.29	75.056	
4,400.00	4,215.79	3,933.07	3,860.18	23.49	15.20	-162.46	305.51	-625.52	1,725.03	1,702.14	22.90	75.339	
4,500.00	4,309.63	4,018.49	3,943.34	24.20	15.62	-162.48	314.63	-642.79	1,777.02	1,753.51	23.50	75.606	
4,600.00	4,403.46	4,103.92	4,026.51	24.92	16.04	-162.50	323.75	-660.05	1,829.00	1,804.89	24.11	75.859	
4,700.00	4,497.29	4,189.34	4,109.67	25.63	16.45	-162.51	332.87	-677.32	1,880.98	1,856.26	24.72	76.097	
4,800.00	4,591.13	4,274.77	4,192.84	26.35	16.87	-162.53	341.99	-694.58	1,932.96	1,907.64	25.33	76.324	
4,900.00	4,684.96	4,360.20	4,276.00	27.06	17.29	-162.54	351.12	-711.85	1,984.95	1,959.01	25.93	76.538	

CC - Min centre to center distance or convergent point, SF - min separation factor, ES - min ellipse separation

Company:	US ROCKIES REGION PLANNING	Local Co-ordinate Reference:	Well P_EVERIST 40-32
Project:	COLORADO NORTHERN ZONE - 83	TVD Reference:	WELL @ 4823.00ft (Original Well Elev)
Reference Site:	WELD_EVERIST 4 PAD	MD Reference:	WELL @ 4823.00ft (Original Well Elev)
Site Error:	0.00ft	North Reference:	True
Reference Well:	P_EVERIST 40-32	Survey Calculation Method:	Minimum Curvature
Well Error:	0.00ft	Output errors are at	2.00 sigma
Reference Wellbore	P_EVERIST 40-32	Database:	EDM 2003.21 Single User Db
Reference Design:	PLAN #1 3-16-10 RHS	Offset TVD Reference:	Offset Datum

Offset Design WELD_EVERIST 4 PAD - P_EVERIST 25-32 - P_EVERIST 25-32 - PLAN #1 3-16-10 RHS												Offset Site Error:	0.00 ft
Survey Program: 0-MWD												Offset Well Error:	0.00 ft
Reference		Offset		Semi Major Axis			Distance						
Measured Depth (ft)	Vertical Depth (ft)	Measured Depth (ft)	Vertical Depth (ft)	Reference (ft)	Offset (ft)	Highside Toolface (°)	Offset Wellbore Centre +N/-S (ft)	+E/-W (ft)	Between Centres (ft)	Between Ellipses (ft)	Minimum Separation (ft)	Separation Factor	Warning
5,000.00	4,778.79	4,445.62	4,359.17	27.78	17.71	-162.56	360.24	-729.11	2,036.93	2,010.39	26.54	76.743	
5,100.00	4,872.63	4,531.05	4,442.33	28.49	18.12	-162.57	369.36	-746.38	2,088.91	2,061.76	27.15	76.937	
5,200.00	4,966.46	4,616.47	4,525.50	29.21	18.54	-162.58	378.48	-763.64	2,140.90	2,113.14	27.76	77.121	
5,300.00	5,060.29	4,701.90	4,608.66	29.92	18.96	-162.59	387.61	-780.91	2,192.88	2,164.51	28.37	77.298	
5,314.14	5,073.56	4,713.98	4,620.42	30.03	19.02	-162.60	388.90	-783.35	2,200.23	2,171.77	28.46	77.322	
5,400.00	5,154.56	4,787.95	4,692.44	30.56	19.38	-162.89	396.80	-798.30	2,243.81	2,214.68	29.13	77.040	
5,500.00	5,249.92	4,875.64	4,777.80	31.05	19.81	-163.18	406.16	-816.02	2,291.87	2,262.01	29.86	76.759	
5,600.00	5,346.28	4,964.86	4,864.66	31.50	20.25	-163.42	415.69	-834.05	2,336.97	2,306.41	30.56	76.474	
5,700.00	5,443.50	5,055.51	4,952.91	31.90	20.69	-163.60	425.37	-852.37	2,379.06	2,347.84	31.22	76.192	
5,800.00	5,541.49	5,147.48	5,042.45	32.24	21.14	-163.74	435.19	-870.96	2,418.10	2,386.25	31.85	75.915	
5,900.00	5,640.11	5,240.66	5,133.16	32.54	21.60	-163.83	445.14	-889.79	2,454.05	2,421.61	32.44	75.646	
6,000.00	5,739.25	5,334.94	5,224.94	32.79	22.06	-163.87	455.21	-908.85	2,486.85	2,453.87	32.99	75.388	
6,100.00	5,838.78	5,430.19	5,317.67	32.99	22.53	-163.88	465.38	-928.10	2,516.49	2,483.00	33.49	75.142	
6,200.00	5,938.59	5,521.50	5,403.33	33.14	23.56	-163.57	491.79	-978.08	2,541.12	2,506.70	34.41	73.847	
6,300.00	6,038.55	5,618.20	5,503.55	33.25	24.35	-163.40	506.02	-1,005.02	2,549.04	2,513.73	35.31	72.188	
6,325.45	6,064.00	5,643.65	5,528.00	33.27	24.38	-87.00	506.02	-1,005.02	2,549.15	2,513.78	35.37	72.073	
6,400.00	6,138.55	5,718.20	5,603.55	33.33	24.47	-87.00	506.02	-1,005.02	2,549.15	2,513.56	35.59	71.622	
6,500.00	6,238.55	5,818.20	5,703.55	33.42	24.59	-87.00	506.02	-1,005.02	2,549.15	2,513.25	35.90	71.009	
6,600.00	6,338.55	5,918.20	5,803.55	33.51	24.71	-87.00	506.02	-1,005.02	2,549.15	2,512.94	36.21	70.401	
6,700.00	6,438.55	6,018.20	5,903.55	33.60	24.83	-87.00	506.02	-1,005.02	2,549.15	2,512.63	36.52	69.798	
6,800.00	6,538.55	6,118.20	6,003.55	33.69	24.96	-87.00	506.02	-1,005.02	2,549.15	2,512.31	36.84	69.199	
6,900.00	6,638.55	6,218.20	6,103.55	33.78	25.09	-87.00	506.02	-1,005.02	2,549.15	2,511.99	37.16	68.606	
7,000.00	6,738.55	6,318.20	6,203.55	33.88	25.21	-87.00	506.02	-1,005.02	2,549.15	2,511.67	37.48	68.018	
7,100.00	6,838.55	6,418.20	6,303.55	33.97	25.34	-87.00	506.02	-1,005.02	2,549.15	2,511.35	37.80	67.435	
7,200.00	6,938.55	6,518.20	6,403.55	34.07	25.47	-87.00	506.02	-1,005.02	2,549.15	2,511.02	38.13	66.857	
7,300.00	7,038.55	6,618.20	6,503.55	34.17	25.61	-87.00	506.02	-1,005.02	2,549.15	2,510.69	38.46	66.286	
7,400.00	7,138.55	6,718.20	6,603.55	34.27	25.74	-87.00	506.02	-1,005.02	2,549.15	2,510.36	38.79	65.720	
7,500.00	7,238.55	6,818.20	6,703.55	34.37	25.87	-87.00	506.02	-1,005.02	2,549.15	2,510.03	39.12	65.159	
7,600.00	7,338.55	6,918.20	6,803.55	34.47	26.01	-87.00	506.02	-1,005.02	2,549.15	2,509.69	39.46	64.604	
7,700.00	7,438.55	7,018.20	6,903.55	34.57	26.15	-87.00	506.02	-1,005.02	2,549.15	2,509.35	39.80	64.055	
7,800.00	7,538.55	7,118.20	7,003.55	34.68	26.29	-87.00	506.02	-1,005.02	2,549.15	2,509.01	40.14	63.512	
7,900.00	7,638.55	7,218.20	7,103.55	34.78	26.42	-87.00	506.02	-1,005.02	2,549.15	2,508.67	40.48	62.975	
8,000.00	7,738.55	7,318.20	7,203.55	34.89	26.57	-87.00	506.02	-1,005.02	2,549.15	2,508.32	40.82	62.444	
8,100.00	7,838.55	7,418.20	7,303.55	35.00	26.71	-87.00	506.02	-1,005.02	2,549.15	2,507.98	41.17	61.918	
8,116.45	7,855.00	7,434.65	7,320.00	35.01	26.73	-87.00	506.02	-1,005.02	2,549.15	2,507.92	41.23	61.832	

Company:	US ROCKIES REGION PLANNING	Local Co-ordinate Reference:	Well P_EVERIST 40-32
Project:	COLORADO NORTHERN ZONE - 83	TVD Reference:	WELL @ 4823.00ft (Original Well Elev)
Reference Site:	WELD_EVERIST 4 PAD	MD Reference:	WELL @ 4823.00ft (Original Well Elev)
Site Error:	0.00ft	North Reference:	True
Reference Well:	P_EVERIST 40-32	Survey Calculation Method:	Minimum Curvature
Well Error:	0.00ft	Output errors are at	2.00 sigma
Reference Wellbore	P_EVERIST 40-32	Database:	EDM 2003.21 Single User Db
Reference Design:	PLAN #1 3-16-10 RHS	Offset TVD Reference:	Offset Datum

Offset Design WELD_EVERIST 4 PAD - P_EVERIST 28-5 - P_EVERIST 28-5 - PLAN #1 3-16-10 RHS												Offset Site Error:	0.00 ft
Survey Program: 0-MWMD												Offset Well Error:	0.00 ft
Measured Depth (ft)	Vertical Depth (ft)	Measured Depth (ft)	Vertical Depth (ft)	Reference (ft)	Offset (ft)	Highside Toolface (°)	Offset Wellbore Centre +N/-S (ft)	+E/-W (ft)	Between Centres (ft)	Between Ellipses (ft)	Minimum Separation (ft)	Separation Factor	Warning
0.00	0.00	0.00	0.00	0.00	0.00	-88.67	0.37	-15.93	15.93				
100.00	100.00	100.00	100.00	0.10	0.10	-88.67	0.37	-15.93	15.93	15.74	0.19	83.384	
200.00	200.00	200.00	200.00	0.32	0.32	-88.67	0.37	-15.93	15.93	15.29	0.64	24.869	
300.00	300.00	300.00	300.00	0.55	0.55	-88.67	0.37	-15.93	15.93	14.84	1.09	14.614 CC, ES	
400.00	400.00	399.76	399.74	0.77	0.74	-94.24	-1.23	-16.60	16.65	15.14	1.51	10.993	
500.00	500.00	499.27	499.11	0.99	0.94	-107.89	-6.01	-18.62	19.59	17.66	1.93	10.137 SF	
600.00	600.00	598.30	597.77	1.22	1.17	-122.37	-13.92	-21.97	26.11	23.73	2.38	10.990	
700.00	700.00	696.63	695.36	1.44	1.44	-133.08	-24.88	-26.60	36.72	33.86	2.85	12.863	
740.00	740.00	735.71	734.03	1.53	1.56	-136.25	-30.09	-28.81	42.08	39.02	3.06	13.746	
800.00	800.00	793.96	791.51	1.66	1.75	-143.85	-38.76	-32.47	51.77	48.52	3.25	15.928	
900.00	899.92	889.67	885.51	1.87	2.11	-141.00	-55.33	-39.48	72.84	69.16	3.68	19.790	
1,000.00	999.64	983.26	976.80	2.09	2.51	-140.11	-74.32	-47.51	99.71	95.59	4.12	24.187	
1,100.00	1,099.05	1,074.28	1,064.89	2.34	2.94	-140.03	-95.42	-56.43	132.13	127.55	4.58	28.874	
1,200.00	1,198.03	1,162.37	1,149.40	2.61	3.41	-140.23	-118.28	-66.09	169.90	164.86	5.04	33.696	
1,300.00	1,296.44	1,247.19	1,230.03	2.92	3.91	-140.50	-142.55	-76.35	212.82	207.30	5.52	38.542	
1,400.00	1,394.18	1,328.48	1,306.53	3.28	4.43	-140.73	-167.86	-87.05	260.67	254.65	6.02	43.331	
1,500.00	1,491.12	1,406.05	1,378.77	3.70	4.96	-140.86	-193.86	-98.05	313.21	306.68	6.53	47.956	
1,600.00	1,587.14	1,479.73	1,446.67	4.17	5.50	-140.89	-220.22	-109.20	370.18	363.10	7.08	52.317	
1,700.00	1,682.13	1,551.06	1,511.68	4.72	6.05	-140.82	-247.24	-120.62	431.29	423.64	7.65	56.390	
1,751.31	1,730.44	1,590.61	1,547.60	5.03	6.37	-140.82	-262.50	-127.07	463.83	455.86	7.97	58.229	
1,800.00	1,776.12	1,627.90	1,581.46	5.33	6.66	-141.30	-276.88	-133.15	494.98	486.67	8.31	59.600	
1,900.00	1,869.96	1,704.48	1,651.00	5.97	7.28	-142.11	-306.43	-145.64	559.02	550.01	9.01	62.031	
2,000.00	1,963.79	1,781.07	1,720.55	6.63	7.90	-142.76	-335.98	-158.14	623.11	613.38	9.73	64.030	
2,100.00	2,057.62	1,857.66	1,790.09	7.29	8.52	-143.29	-365.52	-170.63	687.24	676.78	10.46	65.702	
2,200.00	2,151.46	1,934.25	1,859.64	7.97	9.14	-143.73	-395.07	-183.12	751.40	740.20	11.20	67.118	
2,300.00	2,245.29	2,010.84	1,929.18	8.65	9.76	-144.10	-424.62	-195.62	815.58	803.65	11.94	68.331	
2,400.00	2,339.12	2,087.42	1,998.73	9.34	10.39	-144.41	-454.16	-208.11	879.78	867.10	12.68	69.379	
2,500.00	2,432.96	2,164.01	2,068.28	10.03	11.02	-144.69	-483.71	-220.60	943.99	930.56	13.43	70.294	
2,600.00	2,526.79	2,240.60	2,137.82	10.73	11.65	-144.93	-513.26	-233.10	1,008.21	994.03	14.18	71.101	
2,700.00	2,620.62	2,317.19	2,207.37	11.43	12.27	-145.14	-542.80	-245.59	1,072.45	1,057.51	14.93	71.817	
2,800.00	2,714.46	2,393.77	2,276.91	12.13	12.90	-145.32	-572.35	-258.08	1,136.69	1,121.00	15.69	72.456	
2,900.00	2,808.29	2,470.36	2,346.46	12.83	13.53	-145.49	-601.90	-270.57	1,200.93	1,184.49	16.44	73.032	
3,000.00	2,902.12	2,546.95	2,416.00	13.54	14.17	-145.64	-631.44	-283.07	1,265.18	1,247.98	17.20	73.553	
3,100.00	2,995.96	2,623.54	2,485.55	14.24	14.80	-145.77	-660.99	-295.56	1,329.44	1,311.48	17.96	74.028	
3,200.00	3,089.79	2,700.13	2,555.10	14.95	15.43	-145.90	-690.54	-308.05	1,393.70	1,374.98	18.72	74.462	
3,300.00	3,183.63	2,776.71	2,624.64	15.66	16.06	-146.01	-720.09	-320.55	1,457.96	1,438.49	19.48	74.861	
3,400.00	3,277.46	2,853.30	2,694.19	16.37	16.69	-146.11	-749.63	-333.04	1,522.23	1,501.99	20.23	75.229	
3,500.00	3,371.29	2,929.89	2,763.73	17.08	17.32	-146.20	-779.18	-345.53	1,586.50	1,565.50	20.99	75.571	
3,600.00	3,465.13	3,006.48	2,833.28	17.79	17.96	-146.29	-808.73	-358.03	1,650.77	1,629.02	21.75	75.889	
3,700.00	3,558.96	3,083.07	2,902.82	18.50	18.59	-146.37	-838.27	-370.52	1,715.04	1,692.53	22.51	76.186	
3,800.00	3,652.79	3,159.65	2,972.37	19.21	19.22	-146.44	-867.82	-383.01	1,779.32	1,756.05	23.27	76.464	
3,900.00	3,746.63	3,236.24	3,041.92	19.92	19.86	-146.51	-897.37	-395.50	1,843.59	1,819.56	24.03	76.726	
4,000.00	3,840.46	3,312.83	3,111.46	20.64	20.49	-146.58	-926.91	-408.00	1,907.87	1,883.08	24.79	76.972	
4,100.00	3,934.29	3,389.42	3,181.01	21.35	21.12	-146.64	-956.46	-420.49	1,972.15	1,946.61	25.54	77.205	
4,200.00	4,028.13	3,466.01	3,250.55	22.06	21.76	-146.70	-986.01	-432.98	2,036.43	2,010.13	26.30	77.427	
4,300.00	4,121.96	3,542.59	3,320.10	22.78	22.39	-146.75	-1,015.56	-445.48	2,100.71	2,073.65	27.06	77.637	
4,400.00	4,215.79	3,619.18	3,389.64	23.49	23.03	-146.80	-1,045.10	-457.97	2,165.00	2,137.18	27.81	77.836	
4,500.00	4,309.63	3,695.77	3,459.19	24.20	23.66	-146.85	-1,074.65	-470.46	2,229.28	2,200.71	28.57	78.027	
4,600.00	4,403.46	3,772.36	3,528.74	24.92	24.30	-146.89	-1,104.20	-482.95	2,293.56	2,264.24	29.33	78.210	
4,700.00	4,497.29	3,848.95	3,598.28	25.63	24.93	-146.93	-1,133.74	-495.45	2,357.85	2,327.77	30.08	78.385	
4,800.00	4,591.13	3,925.53	3,667.83	26.35	25.56	-146.97	-1,163.29	-507.94	2,422.13	2,391.30	30.83	78.553	
4,900.00	4,684.96	4,002.12	3,737.37	27.06	26.20	-147.01	-1,192.84	-520.43	2,486.42	2,454.83	31.59	78.715	

CC - Min centre to center distance or convergent point, SF - min separation factor, ES - min ellipse separation

Company:	US ROCKIES REGION PLANNING	Local Co-ordinate Reference:	Well P_EVERIST 40-32
Project:	COLORADO NORTHERN ZONE - 83	TVD Reference:	WELL @ 4823.00ft (Original Well Elev)
Reference Site:	WELD_EVERIST 4 PAD	MD Reference:	WELL @ 4823.00ft (Original Well Elev)
Site Error:	0.00ft	North Reference:	True
Reference Well:	P_EVERIST 40-32	Survey Calculation Method:	Minimum Curvature
Well Error:	0.00ft	Output errors are at	2.00 sigma
Reference Wellbore	P_EVERIST 40-32	Database:	EDM 2003.21 Single User Db
Reference Design:	PLAN #1 3-16-10 RHS	Offset TVD Reference:	Offset Datum

Offset Design WELD_EVERIST 4 PAD - P_EVERIST 28-5 - P_EVERIST 28-5 - PLAN #1 3-16-10 RHS												Offset Site Error:	0.00 ft
Survey Program: 0-MWD												Offset Well Error:	0.00 ft
Reference	Offset	Semi Major Axis		Distance									
Measured Depth (ft)	Vertical Depth (ft)	Measured Depth (ft)	Vertical Depth (ft)	Reference (ft)	Offset (ft)	Highside Toolface (°)	Offset Wellbore Centre +N/-S (ft)	+E/-W (ft)	Between Centres (ft)	Between Ellipses (ft)	Minimum Separation (ft)	Separation Factor	Warning
5,000.00	4,778.79	4,078.71	3,806.92	27.78	26.83	147.05	-1,222.38	-532.93	2,550.71	2,518.37	32.34	78.871	
5,100.00	4,872.63	4,155.30	3,876.47	28.49	27.47	147.08	-1,251.93	-545.42	2,615.00	2,581.90	33.09	79.021	
5,200.00	4,966.46	4,231.88	3,946.01	29.21	28.10	147.11	-1,281.48	-557.91	2,679.28	2,645.44	33.84	79.166	
5,300.00	5,060.29	4,308.47	4,015.56	29.92	28.74	147.14	-1,311.03	-570.41	2,743.57	2,708.98	34.59	79.307	
5,314.14	5,073.56	4,319.30	4,025.39	30.03	28.83	147.15	-1,315.20	-572.17	2,752.66	2,717.96	34.70	79.326	
5,400.00	5,154.56	4,385.76	4,085.73	30.56	29.38	147.91	-1,340.84	-583.01	2,807.03	2,771.53	35.49	79.088	
5,500.00	5,249.92	4,464.85	4,157.56	31.05	30.03	148.68	-1,371.35	-595.91	2,868.19	2,831.85	36.34	78.923	
5,600.00	5,346.28	4,545.68	4,230.95	31.50	30.70	149.35	-1,402.54	-609.10	2,926.97	2,889.75	37.22	78.635	
5,700.00	5,443.50	4,628.15	4,305.84	31.90	31.39	149.93	-1,434.35	-622.55	2,983.30	2,945.20	38.10	78.293	
5,800.00	5,541.49	4,712.15	4,382.11	32.24	32.08	150.41	-1,466.76	-636.25	3,037.12	2,998.17	38.95	77.975	
5,900.00	5,640.11	4,797.58	4,459.69	32.54	32.79	150.81	-1,499.72	-650.19	3,088.38	3,048.63	39.75	77.686	
6,000.00	5,739.25	4,884.35	4,538.48	32.79	33.51	151.14	-1,533.19	-664.34	3,137.03	3,096.51	40.51	77.430	
6,100.00	5,838.78	4,972.34	4,618.38	32.99	34.24	151.39	-1,567.14	-678.69	3,183.02	3,141.80	41.23	77.209	
6,200.00	5,938.59	5,061.44	4,699.29	33.14	34.98	151.59	-1,601.51	-693.23	3,226.33	3,184.44	41.89	77.026	
6,300.00	6,038.55	5,151.55	4,781.12	33.25	35.73	151.72	-1,636.28	-707.93	3,266.91	3,224.42	42.49	76.882	
6,325.45	6,064.00	5,174.64	4,802.08	33.27	35.92	-131.86	-1,645.18	-711.69	3,276.80	3,234.16	42.64	76.851	
6,400.00	6,138.55	5,242.33	4,863.55	33.33	36.48	-132.08	-1,671.30	-722.73	3,305.53	3,262.50	43.03	76.821	
6,500.00	6,238.55	5,333.13	4,946.00	33.42	37.24	-132.38	-1,706.33	-737.55	3,344.14	3,300.58	43.56	76.774	
6,600.00	6,338.55	5,423.94	5,028.46	33.51	37.99	-132.68	-1,741.36	-752.36	3,382.83	3,338.75	44.09	76.734	
6,700.00	6,438.55	5,514.74	5,110.91	33.60	38.74	-132.96	-1,776.40	-767.17	3,421.60	3,376.99	44.61	76.701	
6,800.00	6,538.55	5,605.55	5,193.37	33.69	39.50	-133.24	-1,811.43	-781.98	3,460.43	3,415.30	45.13	76.674	
6,900.00	6,638.55	5,696.35	5,275.82	33.78	40.25	-133.51	-1,846.46	-796.80	3,499.34	3,453.69	45.65	76.653	
7,000.00	6,738.55	5,787.16	5,358.28	33.88	41.00	-133.78	-1,881.49	-811.61	3,538.32	3,492.15	46.17	76.637	
7,100.00	6,838.55	5,877.97	5,440.74	33.97	41.76	-134.04	-1,916.52	-826.42	3,577.36	3,530.67	46.69	76.627	
7,200.00	6,938.55	5,968.78	5,523.20	34.07	42.51	-134.29	-1,951.55	-841.23	3,616.39	3,568.69	47.21	76.617	
7,300.00	7,038.55	6,059.59	5,605.55	34.17	43.26	-134.54	-1,986.58	-855.94	3,655.42	3,606.72	47.73	76.607	
7,400.00	7,138.55	6,150.40	5,687.40	34.27	44.01	-134.79	-2,021.61	-870.65	3,694.45	3,645.75	48.25	76.597	
7,500.00	7,238.55	6,241.21	5,769.21	34.37	44.76	-135.04	-2,056.64	-885.36	3,733.48	3,684.78	48.77	76.587	
7,600.00	7,338.55	6,332.02	5,851.02	34.47	45.51	-135.29	-2,091.67	-899.97	3,772.51	3,723.81	49.29	76.577	
7,700.00	7,438.55	6,422.83	5,932.83	34.57	46.26	-135.54	-2,126.70	-914.58	3,811.54	3,762.84	49.81	76.567	
7,800.00	7,538.55	6,513.64	6,014.64	34.68	47.01	-135.79	-2,161.73	-929.19	3,850.57	3,801.87	50.33	76.557	
7,900.00	7,638.55	6,604.45	6,096.45	34.78	47.76	-136.04	-2,196.76	-943.80	3,889.60	3,840.90	50.85	76.547	
8,000.00	7,738.55	6,695.26	6,178.26	34.89	48.51	-136.29	-2,231.79	-958.41	3,928.63	3,879.93	51.37	76.537	
8,100.00	7,838.55	6,786.07	6,260.07	35.00	49.26	-136.54	-2,266.82	-973.02	3,967.66	3,918.96	51.89	76.527	
8,116.45	7,855.00	6,800.00	6,275.00	35.01	49.27	-136.54	-2,268.83	-975.62	3,970.41	3,921.71	51.90	76.527	

Company:	US ROCKIES REGION PLANNING	Local Co-ordinate Reference:	Well P_EVERIST 40-32
Project:	COLORADO NORTHERN ZONE - 83	TVD Reference:	WELL @ 4823.00ft (Original Well Elev)
Reference Site:	WELD_EVERIST 4 PAD	MD Reference:	WELL @ 4823.00ft (Original Well Elev)
Site Error:	0.00ft	North Reference:	True
Reference Well:	P_EVERIST 40-32	Survey Calculation Method:	Minimum Curvature
Well Error:	0.00ft	Output errors are at	2.00 sigma
Reference Wellbore	P_EVERIST 40-32	Database:	EDM 2003.21 Single User Db
Reference Design:	PLAN #1 3-16-10 RHS	Offset TVD Reference:	Offset Datum

Offset Design WELD_EVERIST 4 PAD - P_EVERIST 7-32 - P_EVERIST 7-32 - PLAN #1 3-16-10 RHS												Offset Site Error:	0.00 ft
Survey Program: 0-MWD												Offset Well Error:	0.00 ft
Reference	Offset	Semi Major Axis		Distance		Warning							
Measured Depth (ft)	Vertical Depth (ft)	Measured Depth (ft)	Vertical Depth (ft)	Reference (ft)	Offset (ft)	Highside Toolface (°)	Offset Wellbore Centre +N/-S (ft)	+E/-W (ft)	Between Centres (ft)	Between Ellipses (ft)	Minimum Separation (ft)	Separation Factor	
0.00	0.00	0.00	0.00	0.00	0.00	-89.34	0.36	-31.85	31.85				
100.00	100.00	100.00	100.00	0.10	0.10	-89.34	0.36	-31.85	31.85	31.66	0.19	166.734	
200.00	200.00	200.00	200.00	0.32	0.32	-89.34	0.36	-31.85	31.85	31.21	0.64	49.728	
300.00	300.00	300.00	300.00	0.55	0.55	-89.34	0.36	-31.85	31.85	30.76	1.09	29.221	
400.00	400.00	400.00	400.00	0.77	0.77	-89.34	0.36	-31.85	31.85	30.32	1.54	20.690	
500.00	500.00	500.00	500.00	0.99	0.99	-89.34	0.36	-31.85	31.85	29.87	1.99	16.014	
600.00	600.00	600.00	600.00	1.22	1.22	-89.34	0.36	-31.85	31.85	29.42	2.44	13.062	
700.00	700.00	700.00	700.00	1.44	1.44	-89.34	0.36	-31.85	31.85	28.97	2.89	11.029	
740.00	740.00	740.00	740.00	1.53	1.53	-89.34	0.36	-31.85	31.85	28.79	3.07	10.383 CC, ES	
800.00	800.00	799.69	799.69	1.66	1.67	-165.03	0.92	-32.12	32.74	29.41	3.33	9.837 SF	
900.00	899.92	898.92	898.84	1.87	1.89	-161.42	4.34	-33.76	38.26	34.51	3.75	10.202	
1,000.00	999.64	997.45	997.11	2.09	2.12	-156.80	10.78	-36.86	49.05	44.87	4.17	11.748	
1,100.00	1,099.05	1,094.88	1,093.97	2.34	2.35	-152.77	20.15	-41.36	65.23	60.63	4.61	14.157	
1,200.00	1,198.03	1,190.80	1,188.94	2.61	2.61	-149.72	32.27	-47.19	86.77	81.72	5.06	17.162	
1,300.00	1,296.44	1,284.86	1,281.58	2.92	2.90	-147.48	46.92	-54.23	113.53	108.00	5.53	20.542	
1,400.00	1,394.18	1,376.71	1,371.48	3.28	3.21	-145.80	63.87	-62.38	145.33	139.30	6.03	24.120	
1,500.00	1,491.12	1,469.14	1,461.50	3.70	3.56	-144.67	82.78	-71.47	181.40	174.84	6.56	27.647	
1,600.00	1,587.14	1,561.31	1,551.24	4.17	3.93	-144.27	101.71	-80.58	220.18	213.05	7.13	30.889	
1,700.00	1,682.13	1,652.32	1,639.85	4.72	4.31	-144.28	120.40	-89.56	261.57	253.84	7.72	33.876	
1,751.31	1,730.44	1,698.53	1,684.85	5.03	4.51	-144.39	129.89	-94.12	283.81	275.78	8.03	35.324	
1,800.00	1,776.12	1,742.21	1,727.38	5.33	4.70	-144.76	138.86	-98.44	305.25	296.88	8.36	36.493	
1,900.00	1,869.96	1,831.92	1,814.74	5.97	5.09	-145.39	157.29	-107.29	349.30	340.25	9.05	38.581	
2,000.00	1,963.79	1,921.64	1,902.09	6.63	5.49	-145.87	175.71	-116.15	393.38	383.62	9.76	40.313	
2,100.00	2,057.62	2,011.35	1,989.45	7.29	5.89	-146.26	194.14	-125.01	437.48	427.00	10.47	41.767	
2,200.00	2,151.46	2,101.07	2,076.80	7.97	6.30	-146.57	212.56	-133.87	481.59	470.39	11.20	43.000	
2,300.00	2,245.29	2,190.79	2,164.16	8.65	6.71	-146.84	230.99	-142.73	525.71	513.78	11.93	44.054	
2,400.00	2,339.12	2,280.50	2,251.52	9.34	7.12	-147.06	249.41	-151.58	569.84	557.17	12.67	44.965	
2,500.00	2,432.96	2,370.22	2,338.87	10.03	7.54	-147.25	267.84	-160.44	613.97	600.56	13.42	45.758	
2,600.00	2,526.79	2,459.94	2,426.23	10.73	7.95	-147.41	286.26	-169.30	658.11	643.95	14.17	46.455	
2,700.00	2,620.62	2,549.65	2,513.58	11.43	8.37	-147.56	304.69	-178.16	702.26	687.34	14.92	47.069	
2,800.00	2,714.46	2,639.37	2,600.94	12.13	8.79	-147.68	323.12	-187.02	746.40	730.73	15.68	47.616	
2,900.00	2,808.29	2,729.09	2,688.30	12.83	9.21	-147.80	341.54	-195.87	790.55	774.12	16.43	48.105	
3,000.00	2,902.12	2,818.80	2,775.65	13.54	9.64	-147.90	359.97	-204.73	834.70	817.51	17.19	48.544	
3,100.00	2,995.96	2,908.52	2,863.01	14.24	10.06	-147.99	378.39	-213.59	878.85	860.90	17.96	48.940	
3,200.00	3,089.79	2,998.24	2,950.36	14.95	10.48	-148.07	396.82	-222.45	923.01	904.29	18.72	49.299	
3,300.00	3,183.63	3,087.95	3,037.72	15.66	10.91	-148.14	415.24	-231.31	967.16	947.68	19.49	49.626	
3,400.00	3,277.46	3,177.67	3,125.08	16.37	11.33	-148.21	433.67	-240.17	1,011.32	991.06	20.26	49.925	
3,500.00	3,371.29	3,267.39	3,212.43	17.08	11.76	-148.27	452.09	-249.02	1,055.48	1,034.45	21.03	50.199	
3,600.00	3,465.13	3,357.10	3,299.79	17.79	12.18	-148.33	470.52	-257.88	1,099.64	1,077.84	21.80	50.452	
3,700.00	3,558.96	3,446.82	3,387.15	18.50	12.61	-148.39	488.95	-266.74	1,143.80	1,121.23	22.57	50.685	
3,800.00	3,652.79	3,536.54	3,474.50	19.21	13.04	-148.43	507.37	-275.60	1,187.96	1,164.62	23.34	50.901	
3,900.00	3,746.63	3,626.25	3,561.86	19.92	13.46	-148.48	525.80	-284.46	1,232.12	1,208.01	24.11	51.101	
4,000.00	3,840.46	3,715.97	3,649.21	20.64	13.89	-148.52	544.22	-293.31	1,276.28	1,251.40	24.89	51.287	
4,100.00	3,934.29	3,805.69	3,736.57	21.35	14.32	-148.56	562.65	-302.17	1,320.44	1,294.78	25.66	51.461	
4,200.00	4,028.13	3,895.40	3,823.93	22.06	14.75	-148.60	581.07	-311.03	1,364.61	1,338.17	26.43	51.623	
4,300.00	4,121.96	3,985.12	3,911.28	22.78	15.18	-148.63	599.50	-319.89	1,408.77	1,381.56	27.21	51.775	
4,400.00	4,215.79	4,074.83	3,998.64	23.49	15.60	-148.67	617.92	-328.75	1,452.93	1,424.95	27.99	51.918	
4,500.00	4,309.63	4,164.55	4,085.99	24.20	16.03	-148.70	636.35	-337.60	1,497.10	1,468.33	28.76	52.052	
4,600.00	4,403.46	4,254.27	4,173.35	24.92	16.46	-148.72	654.77	-346.46	1,541.26	1,511.72	29.54	52.178	
4,700.00	4,497.29	4,343.98	4,260.71	25.63	16.89	-148.75	673.20	-355.32	1,585.43	1,555.11	30.32	52.298	
4,800.00	4,591.13	4,433.70	4,348.06	26.35	17.32	-148.78	691.63	-364.18	1,629.59	1,598.50	31.09	52.410	
4,900.00	4,684.96	4,523.42	4,435.42	27.06	17.75	-148.80	710.05	-373.04	1,673.75	1,641.88	31.87	52.517	

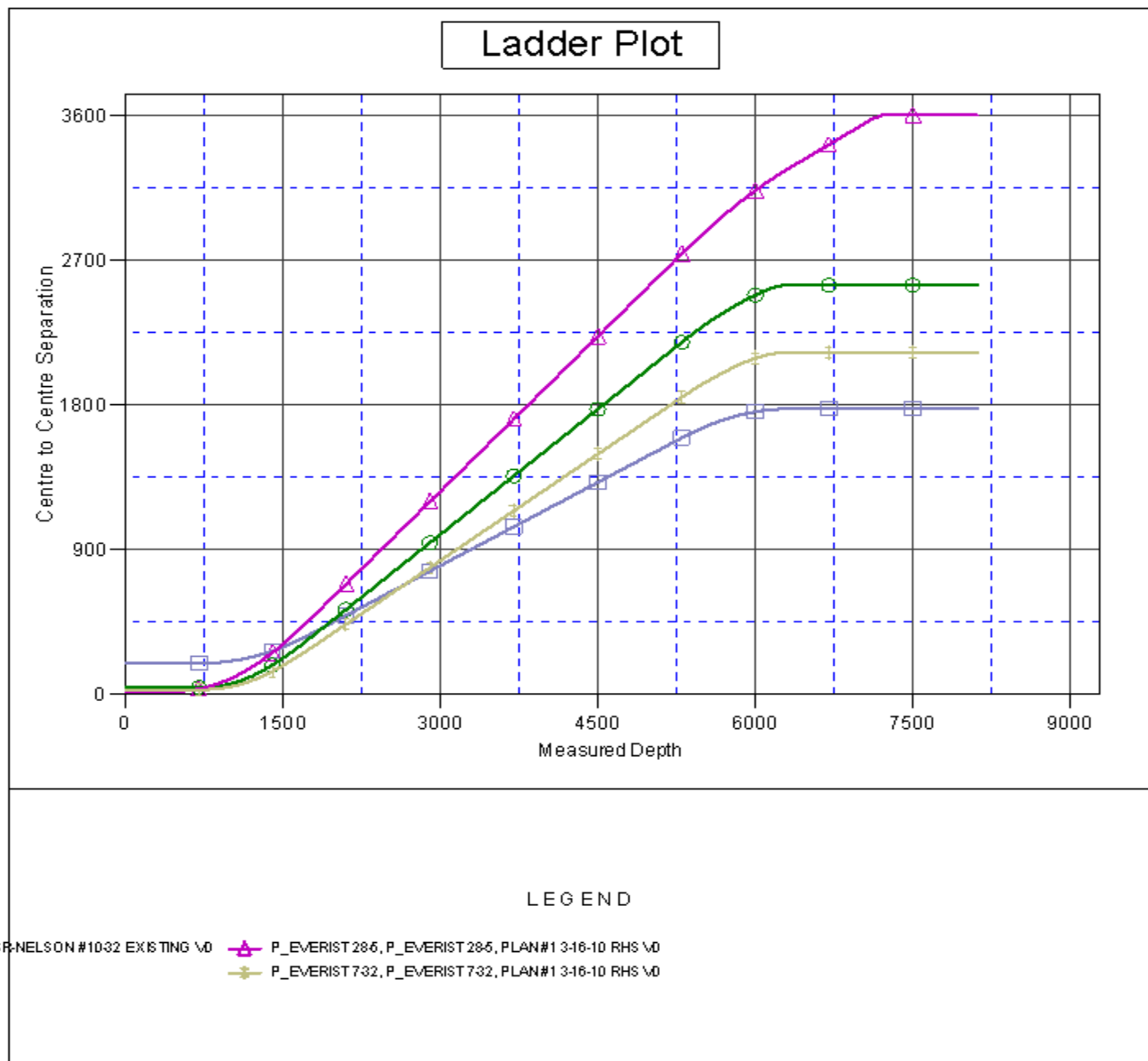
CC - Min centre to center distance or convergent point, SF - min separation factor, ES - min ellipse separation

Company:	US ROCKIES REGION PLANNING	Local Co-ordinate Reference:	Well P_EVERIST 40-32
Project:	COLORADO NORTHERN ZONE - 83	TVD Reference:	WELL @ 4823.00ft (Original Well Elev)
Reference Site:	WELD_EVERIST 4 PAD	MD Reference:	WELL @ 4823.00ft (Original Well Elev)
Site Error:	0.00ft	North Reference:	True
Reference Well:	P_EVERIST 40-32	Survey Calculation Method:	Minimum Curvature
Well Error:	0.00ft	Output errors are at	2.00 sigma
Reference Wellbore	P_EVERIST 40-32	Database:	EDM 2003.21 Single User Db
Reference Design:	PLAN #1 3-16-10 RHS	Offset TVD Reference:	Offset Datum

Offset Design WELD_EVERIST 4 PAD - P_EVERIST 7-32 - P_EVERIST 7-32 - PLAN #1 3-16-10 RHS												Offset Site Error:	0.00 ft
Survey Program: 0-MWD												Offset Well Error:	0.00 ft
Reference	Offset	Semi Major Axis		Distance									
Measured Depth (ft)	Vertical Depth (ft)	Measured Depth (ft)	Vertical Depth (ft)	Reference (ft)	Offset (ft)	Highside Toolface (°)	Offset Wellbore Centre +N/-S (ft)	+E/-W (ft)	Between Centres (ft)	Between Ellipses (ft)	Minimum Separation (ft)	Separation Factor	Warning
5,000.00	4,778.79	4,613.13	4,522.77	27.78	18.18	-148.83	728.48	-381.89	1,717.92	1,685.27	32.65	52.618	
5,100.00	4,872.63	4,702.85	4,610.13	28.49	18.61	-148.85	746.90	-390.75	1,762.09	1,728.66	33.43	52.714	
5,200.00	4,966.46	4,792.57	4,697.49	29.21	19.04	-148.87	765.33	-399.61	1,806.25	1,772.04	34.21	52.805	
5,300.00	5,060.29	4,882.28	4,784.84	29.92	19.47	-148.89	783.75	-408.47	1,850.42	1,815.43	34.99	52.891	
5,314.14	5,073.56	4,894.97	4,797.19	30.03	19.53	-148.89	786.36	-409.72	1,856.66	1,821.57	35.10	52.903	
5,400.00	5,154.56	4,972.48	4,872.67	30.56	19.90	-149.30	802.28	-417.37	1,893.59	1,857.73	35.86	52.806	
5,500.00	5,249.92	5,063.90	4,961.68	31.05	20.34	-149.69	821.05	-426.40	1,934.06	1,897.37	36.69	52.709	
5,600.00	5,346.28	5,156.44	5,051.79	31.50	20.78	-149.99	840.06	-435.54	1,971.77	1,934.27	37.50	52.584	
5,700.00	5,443.50	5,250.00	5,142.88	31.90	21.23	-150.20	859.27	-444.78	2,006.67	1,968.40	38.27	52.437	
5,800.00	5,541.49	5,344.45	5,234.85	32.24	21.68	-150.32	878.67	-454.10	2,038.73	1,999.73	39.00	52.272	
5,900.00	5,640.11	5,439.69	5,327.59	32.54	22.14	-150.37	898.23	-463.50	2,067.94	2,028.24	39.70	52.093	
6,000.00	5,739.25	5,583.23	5,467.71	32.79	22.71	-150.23	926.24	-476.97	2,093.71	2,053.24	40.47	51.734	
6,100.00	5,838.78	5,775.38	5,657.30	32.99	23.28	-150.03	954.21	-490.42	2,112.76	2,071.54	41.22	51.259	
6,200.00	5,938.59	5,972.10	5,853.11	33.14	23.71	-149.94	970.91	-498.45	2,124.36	2,082.58	41.79	50.836	
6,300.00	6,038.55	6,157.65	6,038.55	33.25	23.96	-149.94	975.57	-500.68	2,128.38	2,086.22	42.16	50.483	
6,325.45	6,064.00	6,183.10	6,064.00	33.27	23.99	-73.55	975.57	-500.68	2,128.48	2,086.27	42.21	50.426	
6,400.00	6,138.55	6,257.64	6,138.55	33.33	24.08	-73.55	975.57	-500.68	2,128.48	2,086.08	42.40	50.202	
6,500.00	6,238.55	6,357.64	6,238.55	33.42	24.20	-73.55	975.57	-500.68	2,128.48	2,085.82	42.66	49.894	
6,600.00	6,338.55	6,457.64	6,338.55	33.51	24.32	-73.55	975.57	-500.68	2,128.48	2,085.56	42.93	49.586	
6,700.00	6,438.55	6,557.64	6,438.55	33.60	24.45	-73.55	975.57	-500.68	2,128.48	2,085.29	43.19	49.278	
6,800.00	6,538.55	6,657.64	6,538.55	33.69	24.57	-73.55	975.57	-500.68	2,128.48	2,085.02	43.46	48.971	
6,900.00	6,638.55	6,757.64	6,638.55	33.78	24.70	-73.55	975.57	-500.68	2,128.48	2,084.74	43.74	48.664	
7,000.00	6,738.55	6,857.64	6,738.55	33.88	24.82	-73.55	975.57	-500.68	2,128.48	2,084.47	44.02	48.358	
7,100.00	6,838.55	6,957.64	6,838.55	33.97	24.95	-73.55	975.57	-500.68	2,128.48	2,084.19	44.30	48.052	
7,200.00	6,938.55	7,057.64	6,938.55	34.07	25.08	-73.55	975.57	-500.68	2,128.48	2,083.90	44.58	47.748	
7,300.00	7,038.55	7,157.64	7,038.55	34.17	25.22	-73.55	975.57	-500.68	2,128.48	2,083.62	44.86	47.444	
7,400.00	7,138.55	7,257.64	7,138.55	34.27	25.35	-73.55	975.57	-500.68	2,128.48	2,083.33	45.15	47.142	
7,500.00	7,238.55	7,357.64	7,238.55	34.37	25.48	-73.55	975.57	-500.68	2,128.48	2,083.04	45.44	46.841	
7,600.00	7,338.55	7,457.64	7,338.55	34.47	25.62	-73.55	975.57	-500.68	2,128.48	2,082.75	45.73	46.541	
7,700.00	7,438.55	7,557.64	7,438.55	34.57	25.76	-73.55	975.57	-500.68	2,128.48	2,082.45	46.03	46.242	
7,800.00	7,538.55	7,657.64	7,538.55	34.68	25.89	-73.55	975.57	-500.68	2,128.48	2,082.15	46.33	45.944	
7,900.00	7,638.55	7,757.64	7,638.55	34.78	26.03	-73.55	975.57	-500.68	2,128.48	2,081.85	46.63	45.648	
8,000.00	7,738.55	7,857.64	7,738.55	34.89	26.17	-73.55	975.57	-500.68	2,128.48	2,081.55	46.93	45.354	
8,100.00	7,838.55	7,957.64	7,838.55	35.00	26.32	-73.55	975.57	-500.68	2,128.48	2,081.25	47.24	45.061	
8,116.45	7,855.00	7,974.10	7,855.00	35.01	26.34	-73.55	975.57	-500.68	2,128.48	2,081.20	47.29	45.013	

Company:	US ROCKIES REGION PLANNING	Local Co-ordinate Reference:	Well P_EVERIST 40-32
Project:	COLORADO NORTHERN ZONE - 83	TVD Reference:	WELL @ 4823.00ft (Original Well Elev)
Reference Site:	WELD_EVERIST 4 PAD	MD Reference:	WELL @ 4823.00ft (Original Well Elev)
Site Error:	0.00ft	North Reference:	True
Reference Well:	P_EVERIST 40-32	Survey Calculation Method:	Minimum Curvature
Well Error:	0.00ft	Output errors are at	2.00 sigma
Reference Wellbore	P_EVERIST 40-32	Database:	EDM 2003.21 Single User Db
Reference Design:	PLAN #1 3-16-10 RHS	Offset TVD Reference:	Offset Datum

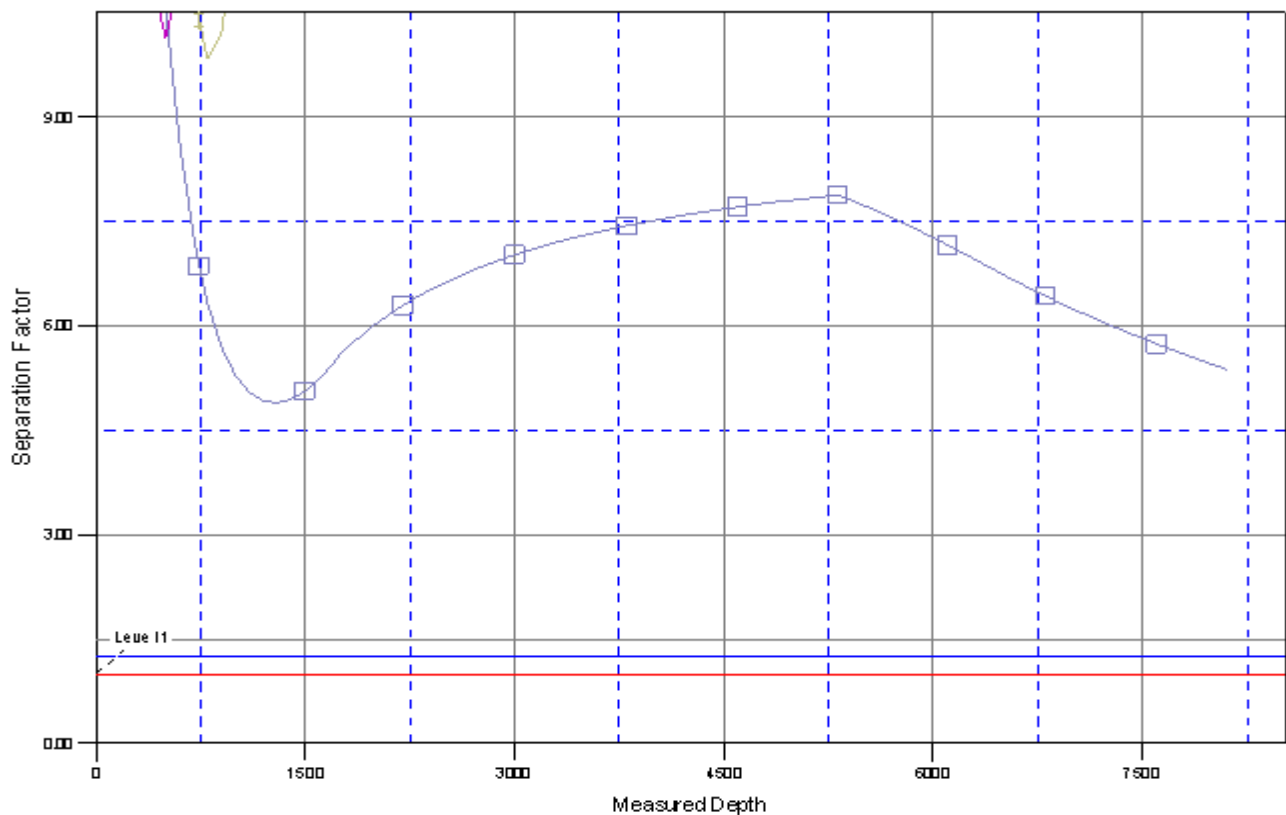
Reference Depths are relative to WELL @ 4823.00ft (Original Well Elev) Coordinates are relative to: P_EVERIST 40-32
Offset Depths are relative to Offset Datum Coordinate System is US State Plane 1983, Colorado Northern Zone
Central Meridian is 105° 30' 0.000 W ° Grid Convergence at Surface is: 0.38°





Company:	US ROCKIES REGION PLANNING	Local Co-ordinate Reference:	Well P_EVERIST 40-32
Project:	COLORADO NORTHERN ZONE - 83	TVD Reference:	WELL @ 4823.00ft (Original Well Elev)
Reference Site:	WELD_EVERIST 4 PAD	MD Reference:	WELL @ 4823.00ft (Original Well Elev)
Site Error:	0.00ft	North Reference:	True
Reference Well:	P_EVERIST 40-32	Survey Calculation Method:	Minimum Curvature
Well Error:	0.00ft	Output errors are at	2.00 sigma
Reference Wellbore	P_EVERIST 40-32	Database:	EDM 2003.21 Single User Db
Reference Design:	PLAN #1 3-16-10 RHS	Offset TVD Reference:	Offset Datum

Reference Depths are relative to WELL @ 4823.00ft (Original Well Elev) Coordinates are relative to: P_EVERIST 40-32
Offset Depths are relative to Offset Datum Coordinate System is US State Plane 1983, Colorado Northern Zone
Central Meridian is 105° 30' 0.000 W ° Grid Convergence at Surface is: 0.38°

Separation Factor Plot



LEGEND

ISP-NELSON #1032 EXISTING WD  P_EVERIST 285, P_EVERIST 285, PLAN#1 3-16-10 RHS WD
 P_EVERIST 732, P_EVERIST 732, PLAN#1 3-16-10 RHS WD