



US ROCKIES REGION PLANNING

COLORADO NORTHERN ZONE - 83

WELD_ EVERIST 4 PAD

P_ EVERIST 7-32

P_ EVERIST 7-32

Plan: PLAN #1 3-16-10 RHS

Standard Planning Report

16 March, 2010



P_EVERIST 7-32
COLORADO NORTHERN ZONE - 83
SECTION 32 T3N R67W
2189 FSL 1623 FEL
LAT: 40° 10' 52.291 N
LONG: 104° 54' 36.565 W



Azimuths to True North
Magnetic North: 9.09°
Magnetic Field
Strength: 53132.1nT
Dip Angle: 66.89°
Date: 3/16/2010
Model: IGRF2010

WELL DETAILS: P_EVERIST 7-32

+N/-S	+E/-W	Northing	Ground Level: Easting	4808.00 Latitude	Longitude	Slot
0.00	0.00	1309399.15	3164806.38	40° 10' 52.291 N	104° 54' 36.565 W	

FORMATION TOP DETAILS

TVDPath	MDPath	Formation
4658.00	4752.01	SHANNON
7025.00	7144.10	NIO A
7285.00	7404.10	CODELL
7723.00	7842.10	JSAND

SECTION DETAILS

MD	Inc	Azi	TVD	+N/-S	+E/-W	DLeg	TFace	VSec	Target
0.00	0.00	0.00	0.00	0.00	0.00	0.00	0.00	0.00	
740.00	0.00	0.00	740.00	0.00	0.00	0.00	0.00	0.00	
1398.60	13.17	334.32	1392.81	67.93	-32.66	2.00	334.32	75.37	
5485.50	13.17	334.32	5372.19	907.27	-436.17	0.00	0.00	1006.67	
6144.10	0.00	0.00	6025.00	975.20	-468.83	2.00	180.00	1082.05	
7992.10	0.00	0.00	7873.00	975.20	-468.83	0.00	0.00	1082.05	PBHL_EVERIST 7-32(2189 FSL 1623 FEL)50'TGT RAD

CASING DETAILS

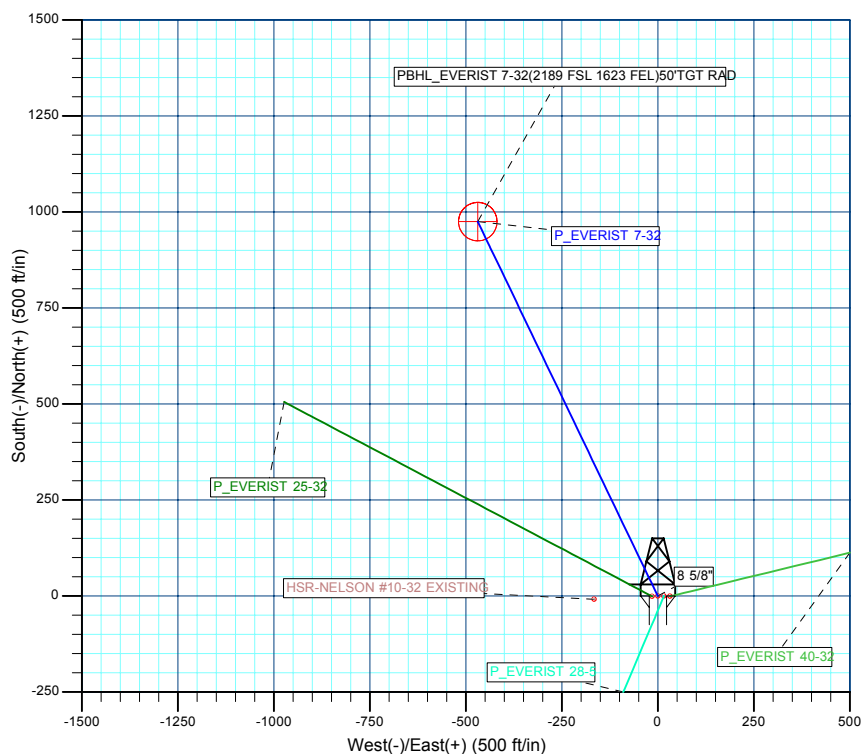
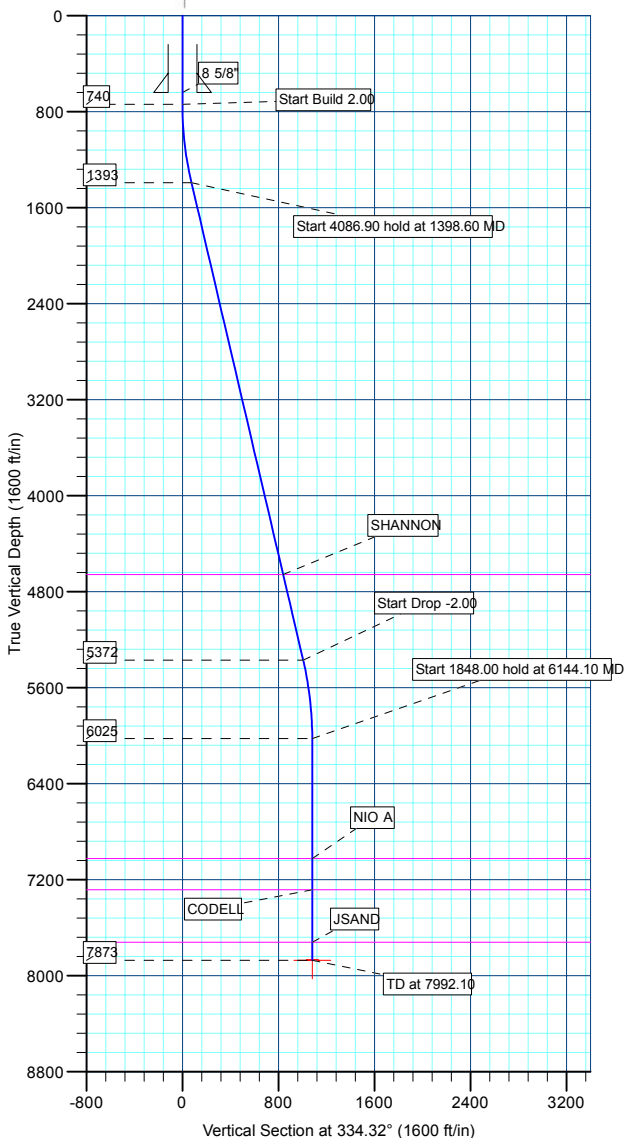
TVD	MD	Name	Size
640.00	640.00	8 5/8"	8.62

WELLBORE TARGET DETAILS (MAP CO-ORDINATES AND LAT/LONG)

Name	TVD	+N/-S	+E/-W	Northing	Easting	Latitude	Longitude	Shape
PBHL	7873.00	975.20	-468.83	1310371.21	3164331.07	40° 11' 1.928 N	104° 54' 42.606 W	Circle (Radius: 50.00)



KB ELEV: WELL @ 4823.00ft (Original Well Elev)
GRD ELEV: 4808.00



Plan: PLAN #1 3-16-10 RHS (P_EVERIST 7-32/P_EVERIST 7-32)

Created By: Robert H. Scott

Database:	EDM 2003.21 Single User Db	Local Co-ordinate Reference:	Well P_EVERIST 7-32
Company:	US ROCKIES REGION PLANNING	TVD Reference:	WELL @ 4823.00ft (Original Well Elev)
Project:	COLORADO NORTHERN ZONE - 83	MD Reference:	WELL @ 4823.00ft (Original Well Elev)
Site:	WELD_EVERIST 4 PAD	North Reference:	True
Well:	P_EVERIST 7-32	Survey Calculation Method:	Minimum Curvature
Wellbore:	P_EVERIST 7-32		
Design:	PLAN #1 3-16-10 RHS		

Project	COLORADO NORTHERN ZONE - 83, KERR MCGEE OIL & GAS ONSHORE LP		
Map System:	US State Plane 1983	System Datum:	Mean Sea Level
Geo Datum:	North American Datum 1983		
Map Zone:	Colorado Northern Zone		

Site		WELD_EVERIST 4 PAD, SECTION 32 T3N R67W			
Site Position:		Northing:	1,309,398.33ft	Latitude:	40° 10' 52.284 N
From:	Lat/Long	Easting:	3,164,791.57ft	Longitude:	104° 54' 36.756 W
Position Uncertainty:	0.00 ft	Slot Radius:	in	Grid Convergence:	0.38 °

Well	P_EVERIST 7-32					
Well Position	+N/-S	0.72 ft	Northing:	1,309,399.15 ft	Latitude:	40° 10' 52.291 N
	+E/-W	14.81 ft	Easting:	3,164,806.38 ft	Longitude:	104° 54' 36.565 W
Position Uncertainty		0.00 ft	Wellhead Elevation:	ft	Ground Level:	4,808.00 ft

Wellbore	P_EVERIST 7-32				
Magnetics	Model Name	Sample Date	Declination (°)	Dip Angle (°)	Field Strength (nT)
	IGRF2010	3/16/2010	9.09	66.89	53,132

Design	PLAN #1 3-16-10 RHS			
Audit Notes:				
Version:	Phase:	PLAN	Tie On Depth:	0.00
Vertical Section:	Depth From (TVD) (ft)	+N/-S (ft)	+E/-W (ft)	Direction (°)
	0.00	0.00	0.00	334.32

Plan Sections										
Measured Depth (ft)	Inclination (°)	Azimuth (°)	Vertical Depth (ft)	+N/-S (ft)	+E/-W (ft)	Dogleg Rate (°/100ft)	Build Rate (°/100ft)	Turn Rate (°/100ft)	TFO (°)	Target
0.00	0.00	0.00	0.00	0.00	0.00	0.00	0.00	0.00	0.00	
740.00	0.00	0.00	740.00	0.00	0.00	0.00	0.00	0.00	0.00	
1,398.60	13.17	334.32	1,392.81	67.93	-32.66	2.00	2.00	0.00	334.32	
5,485.50	13.17	334.32	5,372.19	907.27	-436.17	0.00	0.00	0.00	0.00	
6,144.10	0.00	0.00	6,025.00	975.20	-468.83	2.00	-2.00	0.00	180.00	
7,992.10	0.00	0.00	7,873.00	975.20	-468.83	0.00	0.00	0.00	0.00	PBHL_EVERIST 7-

Database:	EDM 2003.21 Single User Db	Local Co-ordinate Reference:	Well P_EVERIST 7-32
Company:	US ROCKIES REGION PLANNING	TVD Reference:	WELL @ 4823.00ft (Original Well Elev)
Project:	COLORADO NORTHERN ZONE - 83	MD Reference:	WELL @ 4823.00ft (Original Well Elev)
Site:	WELD_EVERIST 4 PAD	North Reference:	True
Well:	P_EVERIST 7-32	Survey Calculation Method:	Minimum Curvature
Wellbore:	P_EVERIST 7-32		
Design:	PLAN #1 3-16-10 RHS		

Planned Survey									
Measured Depth (ft)	Inclination (°)	Azimuth (°)	Vertical Depth (ft)	+N/-S (ft)	+E/-W (ft)	Vertical Section (ft)	Dogleg Rate (°/100ft)	Build Rate (°/100ft)	Turn Rate (°/100ft)
Start Build 2.00									
740.00	0.00	0.00	740.00	0.00	0.00	0.00	0.00	0.00	0.00
800.00	1.20	334.32	800.00	0.57	-0.27	0.63	2.00	2.00	0.00
900.00	3.20	334.32	899.92	4.03	-1.94	4.47	2.00	2.00	0.00
1,000.00	5.20	334.32	999.64	10.63	-5.11	11.79	2.00	2.00	0.00
1,100.00	7.20	334.32	1,099.05	20.36	-9.79	22.59	2.00	2.00	0.00
1,200.00	9.20	334.32	1,198.03	33.21	-15.97	36.85	2.00	2.00	0.00
1,300.00	11.20	334.32	1,296.44	49.17	-23.64	54.56	2.00	2.00	0.00
Start 4086.90 hold at 1398.60 MD									
1,398.60	13.17	334.32	1,392.81	67.93	-32.66	75.37	2.00	2.00	0.00
1,400.00	13.17	334.32	1,394.18	68.22	-32.80	75.69	0.00	0.00	0.00
1,500.00	13.17	334.32	1,491.55	88.75	-42.67	98.48	0.00	0.00	0.00
1,600.00	13.17	334.32	1,588.92	109.29	-52.54	121.27	0.00	0.00	0.00
1,700.00	13.17	334.32	1,686.28	129.83	-62.42	144.05	0.00	0.00	0.00
1,800.00	13.17	334.32	1,783.65	150.37	-72.29	166.84	0.00	0.00	0.00
1,900.00	13.17	334.32	1,881.02	170.90	-82.16	189.63	0.00	0.00	0.00
2,000.00	13.17	334.32	1,978.39	191.44	-92.04	212.42	0.00	0.00	0.00
2,100.00	13.17	334.32	2,075.76	211.98	-101.91	235.20	0.00	0.00	0.00
2,200.00	13.17	334.32	2,173.13	232.52	-111.78	257.99	0.00	0.00	0.00
2,300.00	13.17	334.32	2,270.50	253.05	-121.66	280.78	0.00	0.00	0.00
2,400.00	13.17	334.32	2,367.87	273.59	-131.53	303.57	0.00	0.00	0.00
2,500.00	13.17	334.32	2,465.24	294.13	-141.40	326.35	0.00	0.00	0.00
2,600.00	13.17	334.32	2,562.61	314.67	-151.28	349.14	0.00	0.00	0.00
2,700.00	13.17	334.32	2,659.97	335.20	-161.15	371.93	0.00	0.00	0.00
2,800.00	13.17	334.32	2,757.34	355.74	-171.02	394.72	0.00	0.00	0.00
2,900.00	13.17	334.32	2,854.71	376.28	-180.90	417.50	0.00	0.00	0.00
3,000.00	13.17	334.32	2,952.08	396.82	-190.77	440.29	0.00	0.00	0.00
3,100.00	13.17	334.32	3,049.45	417.35	-200.64	463.08	0.00	0.00	0.00
3,200.00	13.17	334.32	3,146.82	437.89	-210.52	485.87	0.00	0.00	0.00
3,300.00	13.17	334.32	3,244.19	458.43	-220.39	508.65	0.00	0.00	0.00
3,400.00	13.17	334.32	3,341.56	478.97	-230.26	531.44	0.00	0.00	0.00
3,500.00	13.17	334.32	3,438.93	499.50	-240.14	554.23	0.00	0.00	0.00
3,600.00	13.17	334.32	3,536.30	520.04	-250.01	577.02	0.00	0.00	0.00
3,700.00	13.17	334.32	3,633.66	540.58	-259.88	599.80	0.00	0.00	0.00
3,800.00	13.17	334.32	3,731.03	561.12	-269.76	622.59	0.00	0.00	0.00
3,900.00	13.17	334.32	3,828.40	581.65	-279.63	645.38	0.00	0.00	0.00
4,000.00	13.17	334.32	3,925.77	602.19	-289.50	668.17	0.00	0.00	0.00
4,100.00	13.17	334.32	4,023.14	622.73	-299.38	690.95	0.00	0.00	0.00
4,200.00	13.17	334.32	4,120.51	643.26	-309.25	713.74	0.00	0.00	0.00
4,300.00	13.17	334.32	4,217.88	663.80	-319.12	736.53	0.00	0.00	0.00
4,400.00	13.17	334.32	4,315.25	684.34	-329.00	759.32	0.00	0.00	0.00
4,500.00	13.17	334.32	4,412.62	704.88	-338.87	782.10	0.00	0.00	0.00
4,600.00	13.17	334.32	4,509.99	725.41	-348.75	804.89	0.00	0.00	0.00
4,700.00	13.17	334.32	4,607.36	745.95	-358.62	827.68	0.00	0.00	0.00
SHANNON									
4,752.01	13.17	334.32	4,658.00	756.63	-363.75	839.53	0.00	0.00	0.00
4,800.00	13.17	334.32	4,704.72	766.49	-368.49	850.47	0.00	0.00	0.00
4,900.00	13.17	334.32	4,802.09	787.03	-378.37	873.25	0.00	0.00	0.00
5,000.00	13.17	334.32	4,899.46	807.56	-388.24	896.04	0.00	0.00	0.00
5,100.00	13.17	334.32	4,996.83	828.10	-398.11	918.83	0.00	0.00	0.00
5,200.00	13.17	334.32	5,094.20	848.64	-407.99	941.62	0.00	0.00	0.00
5,300.00	13.17	334.32	5,191.57	869.18	-417.86	964.40	0.00	0.00	0.00
5,400.00	13.17	334.32	5,288.94	889.71	-427.73	987.19	0.00	0.00	0.00

Database:	EDM 2003.21 Single User Db	Local Co-ordinate Reference:	Well P_EVERIST 7-32
Company:	US ROCKIES REGION PLANNING	TVD Reference:	WELL @ 4823.00ft (Original Well Elev)
Project:	COLORADO NORTHERN ZONE - 83	MD Reference:	WELL @ 4823.00ft (Original Well Elev)
Site:	WELD_EVERIST 4 PAD	North Reference:	True
Well:	P_EVERIST 7-32	Survey Calculation Method:	Minimum Curvature
Wellbore:	P_EVERIST 7-32		
Design:	PLAN #1 3-16-10 RHS		

Planned Survey

Measured Depth (ft)	Inclination (°)	Azimuth (°)	Vertical Depth (ft)	+N/-S (ft)	+E/-W (ft)	Vertical Section (ft)	Dogleg Rate (°/100ft)	Build Rate (°/100ft)	Turn Rate (°/100ft)
Start Drop -2.00									
5,485.50	13.17	334.32	5,372.19	907.27	-436.17	1,006.67	0.00	0.00	0.00
5,500.00	12.88	334.32	5,386.32	910.22	-437.59	1,009.94	2.00	-2.00	0.00
5,600.00	10.88	334.32	5,484.17	928.77	-446.51	1,030.53	2.00	-2.00	0.00
5,700.00	8.88	334.32	5,582.68	944.24	-453.95	1,047.69	2.00	-2.00	0.00
5,800.00	6.88	334.32	5,681.73	956.60	-459.89	1,061.41	2.00	-2.00	0.00
5,900.00	4.88	334.32	5,781.20	965.84	-464.33	1,071.65	2.00	-2.00	0.00
6,000.00	2.88	334.32	5,880.96	971.94	-467.26	1,078.42	2.00	-2.00	0.00
6,100.00	0.88	334.32	5,980.90	974.90	-468.68	1,081.71	2.00	-2.00	0.00
Start 1848.00 hold at 6144.10 MD									
6,144.10	0.00	0.00	6,025.00	975.20	-468.83	1,082.05	2.00	-2.00	0.00
6,200.00	0.00	0.00	6,080.90	975.20	-468.83	1,082.05	0.00	0.00	0.00
6,300.00	0.00	0.00	6,180.90	975.20	-468.83	1,082.05	0.00	0.00	0.00
6,400.00	0.00	0.00	6,280.90	975.20	-468.83	1,082.05	0.00	0.00	0.00
6,500.00	0.00	0.00	6,380.90	975.20	-468.83	1,082.05	0.00	0.00	0.00
6,600.00	0.00	0.00	6,480.90	975.20	-468.83	1,082.05	0.00	0.00	0.00
6,700.00	0.00	0.00	6,580.90	975.20	-468.83	1,082.05	0.00	0.00	0.00
6,800.00	0.00	0.00	6,680.90	975.20	-468.83	1,082.05	0.00	0.00	0.00
6,900.00	0.00	0.00	6,780.90	975.20	-468.83	1,082.05	0.00	0.00	0.00
7,000.00	0.00	0.00	6,880.90	975.20	-468.83	1,082.05	0.00	0.00	0.00
7,100.00	0.00	0.00	6,980.90	975.20	-468.83	1,082.05	0.00	0.00	0.00
NIO A									
7,144.10	0.00	0.00	7,025.00	975.20	-468.83	1,082.05	0.00	0.00	0.00
7,200.00	0.00	0.00	7,080.90	975.20	-468.83	1,082.05	0.00	0.00	0.00
7,300.00	0.00	0.00	7,180.90	975.20	-468.83	1,082.05	0.00	0.00	0.00
7,400.00	0.00	0.00	7,280.90	975.20	-468.83	1,082.05	0.00	0.00	0.00
CODELL									
7,404.10	0.00	0.00	7,285.00	975.20	-468.83	1,082.05	0.00	0.00	0.00
7,500.00	0.00	0.00	7,380.90	975.20	-468.83	1,082.05	0.00	0.00	0.00
7,600.00	0.00	0.00	7,480.90	975.20	-468.83	1,082.05	0.00	0.00	0.00
7,700.00	0.00	0.00	7,580.90	975.20	-468.83	1,082.05	0.00	0.00	0.00
7,800.00	0.00	0.00	7,680.90	975.20	-468.83	1,082.05	0.00	0.00	0.00
JSAND									
7,842.10	0.00	0.00	7,723.00	975.20	-468.83	1,082.05	0.00	0.00	0.00
7,900.00	0.00	0.00	7,780.90	975.20	-468.83	1,082.05	0.00	0.00	0.00
PBHL_EVERIST 7-32(2189 FSL 1623 FEL)50'TGT RAD									
7,992.10	0.00	0.00	7,873.00	975.20	-468.83	1,082.05	0.00	0.00	0.00

Design Targets

Target Name	Dip Angle (°)	Dip Dir. (°)	TVD (ft)	+N/-S (ft)	+E/-W (ft)	Northing (ft)	Easting (ft)	Latitude	Longitude
- hit/miss target									
- Shape									
PBHL_EVERIST 7-32	0.00	0.00	7,873.00	975.20	-468.83	1,310,371.21	3,164,331.07	40° 11' 1.928 N	104° 54' 42.606 W
- plan hits target center									
- Circle (radius 50.00)									

Database:	EDM 2003.21 Single User Db	Local Co-ordinate Reference:	Well P_EVERIST 7-32
Company:	US ROCKIES REGION PLANNING	TVD Reference:	WELL @ 4823.00ft (Original Well Elev)
Project:	COLORADO NORTHERN ZONE - 83	MD Reference:	WELL @ 4823.00ft (Original Well Elev)
Site:	WELD_EVERIST 4 PAD	North Reference:	True
Well:	P_EVERIST 7-32	Survey Calculation Method:	Minimum Curvature
Wellbore:	P_EVERIST 7-32		
Design:	PLAN #1 3-16-10 RHS		

Casing Points					
Measured Depth (ft)	Vertical Depth (ft)	Name	Casing Diameter (in)	Hole Diameter (in)	
640.00	640.00	8 5/8"	8.62	11.00	

Formations						
Measured Depth (ft)	Vertical Depth (ft)	Name	Lithology	Dip (°)	Dip Direction (°)	
4,752.01	4,658.00	SHANNON				
7,144.10	7,025.00	NIO A				
7,404.10	7,285.00	CODELL				
7,842.10	7,723.00	JSAND				

Plan Annotations					
Measured Depth (ft)	Vertical Depth (ft)	Local Coordinates			
		+N/-S (ft)	+E/-W (ft)	Comment	
740.00	740.00	0.00	0.00	Start Build 2.00	
1,398.60	1,392.81	67.93	-32.66	Start 4086.90 hold at 1398.60 MD	
5,485.50	5,372.19	907.27	-436.17	Start Drop -2.00	
6,144.10	6,025.00	975.20	-468.83	Start 1848.00 hold at 6144.10 MD	
7,992.10	7,873.00	975.20	-468.83	TD at 7992.10	



US ROCKIES REGION PLANNING

**COLORADO NORTHERN ZONE - 83
WELD_EVERIST 4 PAD
P_EVERIST 7-32**

**P_EVERIST 7-32
PLAN #1 3-16-10 RHS**

Anticollision Report

16 March, 2010



Company:	US ROCKIES REGION PLANNING	Local Co-ordinate Reference:	Well P_EVERIST 7-32
Project:	COLORADO NORTHERN ZONE - 83	TVD Reference:	WELL @ 4823.00ft (Original Well Elev)
Reference Site:	WELD_EVERIST 4 PAD	MD Reference:	WELL @ 4823.00ft (Original Well Elev)
Site Error:	0.00ft	North Reference:	True
Reference Well:	P_EVERIST 7-32	Survey Calculation Method:	Minimum Curvature
Well Error:	0.00ft	Output errors are at	2.00 sigma
Reference Wellbore	P_EVERIST 7-32	Database:	EDM 2003.21 Single User Db
Reference Design:	PLAN #1 3-16-10 RHS	Offset TVD Reference:	Offset Datum

Reference	PLAN #1 3-16-10 RHS		
Filter type:	NO GLOBAL FILTER: Using user defined selection & filtering criteria		
Interpolation Method:	Stations	Error Model:	ISCWSA
Depth Range:	0.00 to 20,000.00ft	Scan Method:	Closest Approach 3D
Results Limited by:	Maximum center-center distance of 10,000.00ft	Error Surface:	Elliptical Conic
Warning Levels Evaluated at:	2.00 Sigma		

Survey Tool Program	Date	3/16/2010		
From (ft)	To (ft)	Survey (Wellbore)	Tool Name	Description
0.00	7,992.10	PLAN #1 3-16-10 RHS (P_EVERIST 7-32)	MWD	MWD - Standard

Summary						
Site Name	Reference Measured Depth (ft)	Offset Measured Depth (ft)	Distance Between Centres (ft)	Distance Between Ellipses (ft)	Separation Factor	Warning
Offset Well - Wellbore - Design						
WELD_EVERIST 4 PAD						
HSR-NELSON #10-32 EXISTING - HSR-NELSON #10-3	1,349.34	1,344.76	152.81	98.16	2.796	CC
HSR-NELSON #10-32 EXISTING - HSR-NELSON #10-3	1,500.00	1,491.55	156.52	95.49	2.565	ES
HSR-NELSON #10-32 EXISTING - HSR-NELSON #10-3	1,700.00	1,686.28	172.25	102.95	2.486	SF
P_EVERIST 25-32 - P_EVERIST 25-32 - PLAN #1 3-16-	740.00	740.00	14.83	11.76	4.832	CC, ES
P_EVERIST 25-32 - P_EVERIST 25-32 - PLAN #1 3-16-	900.00	899.24	17.01	13.25	4.520	SF
P_EVERIST 28-5 - P_EVERIST 28-5 - PLAN #1 3-16-10	488.47	488.61	14.67	12.78	7.762	CC
P_EVERIST 28-5 - P_EVERIST 28-5 - PLAN #1 3-16-10	500.00	500.11	14.69	12.75	7.578	ES
P_EVERIST 28-5 - P_EVERIST 28-5 - PLAN #1 3-16-10	600.00	599.55	17.47	15.10	7.364	SF
P_EVERIST 40-32 - P_EVERIST 40-32 - PLAN #1 3-16-	740.00	740.00	31.85	28.79	10.383	CC, ES
P_EVERIST 40-32 - P_EVERIST 40-32 - PLAN #1 3-16-	800.00	799.34	32.74	29.41	9.836	SF

Offset Design		WELD_EVERIST 4 PAD - HSR-NELSON #10-32 EXISTING - HSR-NELSON #10-32 EXISTING - HSR-I										Offset Site Error:		0.00 ft	
Survey Program:		0-UNKNOWN										Offset Well Error:		0.00 ft	
Reference		Offset		Semi Major Axis			Distance							Warning	
Measured Depth (ft)	Vertical Depth (ft)	Measured Depth (ft)	Vertical Depth (ft)	Reference (ft)	Offset (ft)	Highside Toolface (°)	Offset Wellbore Centre +N/-S (ft)	Offset Wellbore Centre +E/-W (ft)	Between Centres (ft)	Between Ellipses (ft)	Minimum Separation (ft)	Separation Factor			
0.00	0.00	0.00	0.00	0.00	0.00	-92.77	-8.02	-165.69	165.88						
100.00	100.00	100.00	100.00	0.10	1.70	-92.77	-8.02	-165.69	165.88	164.09	1.80	92.387			
200.00	200.00	200.00	200.00	0.32	5.70	-92.77	-8.02	-165.69	165.88	159.86	6.02	27.554			
300.00	300.00	300.00	300.00	0.55	9.70	-92.77	-8.02	-165.69	165.88	155.64	10.25	16.192			
400.00	400.00	400.00	400.00	0.77	13.70	-92.77	-8.02	-165.69	165.88	151.41	14.47	11.464			
500.00	500.00	500.00	500.00	0.99	17.70	-92.77	-8.02	-165.69	165.88	147.19	18.69	8.873			
600.00	600.00	600.00	600.00	1.22	21.70	-92.77	-8.02	-165.69	165.88	142.96	22.92	7.238			
700.00	700.00	700.00	700.00	1.44	25.70	-92.77	-8.02	-165.69	165.88	138.74	27.14	6.111			
740.00	740.00	740.00	740.00	1.53	27.30	-92.77	-8.02	-165.69	165.88	137.05	28.83	5.753			
800.00	800.00	800.00	800.00	1.67	29.70	-67.30	-8.02	-165.69	165.64	134.27	31.37	5.281			
900.00	899.92	899.92	899.92	1.89	33.70	-68.56	-8.02	-165.69	164.20	128.62	35.58	4.615			
1,000.00	999.64	999.64	999.64	2.12	37.69	-71.02	-8.02	-165.69	161.66	121.87	39.79	4.063			
1,100.00	1,099.05	1,099.05	1,099.05	2.37	41.66	-74.76	-8.02	-165.69	158.46	114.46	44.00	3.601			
1,200.00	1,198.03	1,198.03	1,198.03	2.64	45.62	-79.85	-8.02	-165.69	155.30	107.06	48.24	3.219			
1,300.00	1,296.44	1,296.44	1,296.44	2.94	49.56	-86.33	-8.02	-165.69	153.13	100.62	52.51	2.916			
1,349.34	1,344.76	1,344.76	1,344.76	3.11	51.49	-90.00	-8.02	-165.69	152.81	98.16	54.64	2.796 CC			
1,398.60	1,392.81	1,392.81	1,392.81	3.29	53.41	-93.94	-8.02	-165.69	153.19	96.45	56.74	2.700			

CC - Min centre to center distance or convergent point, SF - min separation factor, ES - min ellipse separation

Company:	US ROCKIES REGION PLANNING	Local Co-ordinate Reference:	Well P_EVERIST 7-32
Project:	COLORADO NORTHERN ZONE - 83	TVD Reference:	WELL @ 4823.00ft (Original Well Elev)
Reference Site:	WELD_EVERIST 4 PAD	MD Reference:	WELL @ 4823.00ft (Original Well Elev)
Site Error:	0.00ft	North Reference:	True
Reference Well:	P_EVERIST 7-32	Survey Calculation Method:	Minimum Curvature
Well Error:	0.00ft	Output errors are at	2.00 sigma
Reference Wellbore	P_EVERIST 7-32	Database:	EDM 2003.21 Single User Db
Reference Design:	PLAN #1 3-16-10 RHS	Offset TVD Reference:	Offset Datum

Offset Design WELD_EVERIST 4 PAD - HSR-NELSON #10-32 EXISTING - HSR-NELSON #10-32 EXISTING - HSR-												Offset Site Error:	0.00 ft
Survey Program: 0-UNKNOWN												Offset Well Error:	0.00 ft
Reference	Offset	Semi Major Axis					Distance						Warning
Measured Depth (ft)	Vertical Depth (ft)	Measured Depth (ft)	Vertical Depth (ft)	Reference (ft)	Offset (ft)	Highside Toolface (°)	Offset Wellbore Centre +N/-S (ft)	+E/-W (ft)	Between Centres (ft)	Between Ellipses (ft)	Minimum Separation (ft)	Separation Factor	
1,400.00	1,394.18	1,394.18	1,394.18	3.29	53.47	-94.06	-8.02	-165.69	153.21	96.42	56.79	2.698	
1,500.00	1,491.55	1,491.55	1,491.55	3.68	57.36	-102.20	-8.02	-165.69	156.52	95.49	61.03	2.565 ES	
1,600.00	1,588.92	1,588.92	1,588.92	4.09	61.26	-109.87	-8.02	-165.69	162.99	97.79	65.20	2.500	
1,700.00	1,686.28	1,686.28	1,686.28	4.52	65.15	-116.86	-8.02	-165.69	172.25	102.95	69.30	2.486 SF	
1,800.00	1,783.65	1,783.65	1,783.65	4.95	69.05	-123.09	-8.02	-165.69	183.88	110.54	73.34	2.507	
1,900.00	1,881.02	1,881.02	1,881.02	5.39	72.94	-128.55	-8.02	-165.69	197.46	120.12	77.35	2.553	
2,000.00	1,978.39	1,978.39	1,978.39	5.84	76.84	-133.29	-8.02	-165.69	212.63	131.30	81.33	2.614	
2,100.00	2,075.76	2,075.76	2,075.76	6.29	80.73	-137.40	-8.02	-165.69	229.06	143.76	85.30	2.685	
2,200.00	2,173.13	2,173.13	2,173.13	6.75	84.63	-140.95	-8.02	-165.69	246.50	157.23	89.27	2.761	
2,300.00	2,270.50	2,270.50	2,270.50	7.21	88.52	-144.03	-8.02	-165.69	264.76	171.52	93.25	2.839	
2,400.00	2,367.87	2,367.87	2,367.87	7.67	92.41	-146.71	-8.02	-165.69	283.68	186.45	97.22	2.918	
2,500.00	2,465.24	2,465.24	2,465.24	8.14	96.31	-149.06	-8.02	-165.69	303.13	201.92	101.21	2.995	
2,600.00	2,562.61	2,562.61	2,562.61	8.61	100.20	-151.13	-8.02	-165.69	323.01	217.81	105.19	3.071	
2,700.00	2,659.97	2,659.97	2,659.97	9.08	104.10	-152.95	-8.02	-165.69	343.26	234.07	109.19	3.144	
2,800.00	2,757.34	2,757.34	2,757.34	9.55	107.99	-154.58	-8.02	-165.69	363.80	250.61	113.19	3.214	
2,900.00	2,854.71	2,854.71	2,854.71	10.02	111.89	-156.03	-8.02	-165.69	384.60	267.40	117.20	3.282	
3,000.00	2,952.08	2,952.08	2,952.08	10.49	115.78	-157.33	-8.02	-165.69	405.61	284.40	121.21	3.346	
3,100.00	3,049.45	3,049.45	3,049.45	10.96	119.68	-158.51	-8.02	-165.69	426.81	301.58	125.23	3.408	
3,200.00	3,146.82	3,146.82	3,146.82	11.44	123.57	-159.57	-8.02	-165.69	448.16	318.91	129.25	3.467	
3,300.00	3,244.19	3,244.19	3,244.19	11.91	127.47	-160.54	-8.02	-165.69	469.65	336.38	133.27	3.524	
3,400.00	3,341.56	3,341.56	3,341.56	12.39	131.36	-161.42	-8.02	-165.69	491.25	353.95	137.30	3.578	
3,500.00	3,438.93	3,438.93	3,438.93	12.86	135.26	-162.23	-8.02	-165.69	512.96	371.63	141.33	3.630	
3,600.00	3,536.30	3,536.30	3,536.30	13.34	139.15	-162.97	-8.02	-165.69	534.75	389.39	145.36	3.679	
3,700.00	3,633.66	3,633.66	3,633.66	13.81	143.05	-163.66	-8.02	-165.69	556.63	407.23	149.40	3.726	
3,800.00	3,731.03	3,731.03	3,731.03	14.29	146.94	-164.29	-8.02	-165.69	578.57	425.14	153.44	3.771	
3,900.00	3,828.40	3,828.40	3,828.40	14.77	150.84	-164.88	-8.02	-165.69	600.58	443.11	157.48	3.814	
4,000.00	3,925.77	3,925.77	3,925.77	15.25	154.73	-165.43	-8.02	-165.69	622.65	461.13	161.52	3.855	
4,100.00	4,023.14	4,023.14	4,023.14	15.72	158.63	-165.93	-8.02	-165.69	644.76	479.20	165.56	3.894	
4,200.00	4,120.51	4,120.51	4,120.51	16.20	162.52	-166.41	-8.02	-165.69	666.92	497.31	169.61	3.932	
4,300.00	4,217.88	4,217.88	4,217.88	16.68	166.42	-166.85	-8.02	-165.69	689.12	515.47	173.65	3.968	
4,400.00	4,315.25	4,315.25	4,315.25	17.16	170.31	-167.27	-8.02	-165.69	711.36	533.66	177.70	4.003	
4,500.00	4,412.62	4,412.62	4,412.62	17.64	174.20	-167.66	-8.02	-165.69	733.63	551.88	181.75	4.036	
4,600.00	4,509.99	4,509.99	4,509.99	18.12	178.10	-168.03	-8.02	-165.69	755.94	570.13	185.80	4.068	
4,700.00	4,607.36	4,607.36	4,607.36	18.59	181.99	-168.38	-8.02	-165.69	778.27	588.41	189.85	4.099	
4,800.00	4,704.72	4,704.72	4,704.72	19.07	185.89	-168.71	-8.02	-165.69	800.62	606.72	193.91	4.129	
4,900.00	4,802.09	4,802.09	4,802.09	19.55	189.78	-169.02	-8.02	-165.69	823.00	625.04	197.96	4.157	
5,000.00	4,899.46	4,899.46	4,899.46	20.03	193.68	-169.31	-8.02	-165.69	845.40	643.39	202.01	4.185	
5,100.00	4,996.83	4,996.83	4,996.83	20.51	197.57	-169.59	-8.02	-165.69	867.83	661.76	206.07	4.211	
5,200.00	5,094.20	5,094.20	5,094.20	20.99	201.47	-169.86	-8.02	-165.69	890.27	680.14	210.12	4.237	
5,300.00	5,191.57	5,191.57	5,191.57	21.47	205.36	-170.11	-8.02	-165.69	912.72	698.54	214.18	4.261	
5,400.00	5,288.94	5,288.94	5,288.94	21.95	209.26	-170.35	-8.02	-165.69	935.20	716.96	218.24	4.285	
5,485.50	5,372.19	5,372.19	5,372.19	22.36	212.59	-170.54	-8.02	-165.69	954.42	732.72	221.71	4.305	
5,500.00	5,386.32	5,386.32	5,386.32	22.42	213.15	-170.59	-8.02	-165.69	957.65	735.14	222.51	4.304	
5,600.00	5,484.17	5,484.17	5,484.17	22.77	217.07	-170.85	-8.02	-165.69	977.98	750.07	227.91	4.291	
5,700.00	5,582.68	5,582.68	5,582.68	23.08	221.01	-171.06	-8.02	-165.69	994.94	761.68	233.25	4.265	
5,800.00	5,681.73	5,681.73	5,681.73	23.35	224.97	-171.22	-8.02	-165.69	1,008.49	770.11	238.38	4.231	
5,900.00	5,781.20	5,781.20	5,781.20	23.58	228.95	-171.34	-8.02	-165.69	1,018.62	775.36	243.26	4.187	
6,000.00	5,880.96	5,880.96	5,880.96	23.76	232.94	-171.42	-8.02	-165.69	1,025.31	777.43	247.88	4.136	
6,100.00	5,980.90	5,980.90	5,980.90	23.90	236.94	-171.46	-8.02	-165.69	1,028.56	776.34	252.22	4.078	
6,144.10	6,025.00	6,025.00	6,025.00	23.95	238.70	162.86	-8.02	-165.69	1,028.89	774.86	254.03	4.050	
6,200.00	6,080.90	6,080.90	6,080.90	24.01	240.94	162.86	-8.02	-165.69	1,028.89	772.53	256.36	4.013	
6,300.00	6,180.90	6,180.90	6,180.90	24.13	244.94	162.86	-8.02	-165.69	1,028.89	768.34	260.55	3.949	

CC - Min centre to center distance or convergent point, SF - min separation factor, ES - min ellipse separation

Company:	US ROCKIES REGION PLANNING	Local Co-ordinate Reference:	Well P_EVERIST 7-32
Project:	COLORADO NORTHERN ZONE - 83	TVD Reference:	WELL @ 4823.00ft (Original Well Elev)
Reference Site:	WELD_EVERIST 4 PAD	MD Reference:	WELL @ 4823.00ft (Original Well Elev)
Site Error:	0.00ft	North Reference:	True
Reference Well:	P_EVERIST 7-32	Survey Calculation Method:	Minimum Curvature
Well Error:	0.00ft	Output errors are at	2.00 sigma
Reference Wellbore	P_EVERIST 7-32	Database:	EDM 2003.21 Single User Db
Reference Design:	PLAN #1 3-16-10 RHS	Offset TVD Reference:	Offset Datum

Offset Design WELD_EVERIST 4 PAD - HSR-NELSON #10-32 EXISTING - HSR-NELSON #10-32 EXISTING - HSR-												Offset Site Error:	0.00 ft
Survey Program: 0-UNKNOWN												Offset Well Error:	0.00 ft
Reference	Offset	Semi Major Axis		Distance									
Measured Depth (ft)	Vertical Depth (ft)	Measured Depth (ft)	Vertical Depth (ft)	Reference (ft)	Offset (ft)	Highside Toolface (°)	Offset Wellbore Centre +N/-S (ft)	+E/-W (ft)	Between Centres (ft)	Between Ellipses (ft)	Minimum Separation (ft)	Separation Factor	Warning
6,400.00	6,280.90	6,280.90	6,280.90	24.25	248.94	162.86	-8.02	-165.69	1,028.89	764.15	264.74	3.886	
6,500.00	6,380.90	6,380.90	6,380.90	24.37	252.94	162.86	-8.02	-165.69	1,028.89	759.97	268.93	3.826	
6,600.00	6,480.90	6,480.90	6,480.90	24.50	256.94	162.86	-8.02	-165.69	1,028.89	755.77	273.12	3.767	
6,700.00	6,580.90	6,580.90	6,580.90	24.62	260.94	162.86	-8.02	-165.69	1,028.89	751.58	277.31	3.710	
6,800.00	6,680.90	6,680.90	6,680.90	24.75	264.94	162.86	-8.02	-165.69	1,028.89	747.39	281.50	3.655	
6,900.00	6,780.90	6,780.90	6,780.90	24.88	268.94	162.86	-8.02	-165.69	1,028.89	743.20	285.70	3.601	
7,000.00	6,880.90	6,880.90	6,880.90	25.01	272.94	162.86	-8.02	-165.69	1,028.89	739.00	289.89	3.549	
7,100.00	6,980.90	6,980.90	6,980.90	25.14	276.94	162.86	-8.02	-165.69	1,028.89	734.81	294.08	3.499	
7,200.00	7,080.90	7,080.90	7,080.90	25.27	280.94	162.86	-8.02	-165.69	1,028.89	730.61	298.28	3.449	
7,300.00	7,180.90	7,180.90	7,180.90	25.41	284.94	162.86	-8.02	-165.69	1,028.89	726.42	302.48	3.402	
7,400.00	7,280.90	7,280.90	7,280.90	25.54	288.94	162.86	-8.02	-165.69	1,028.89	722.22	306.67	3.355	
7,500.00	7,380.90	7,380.90	7,380.90	25.68	292.94	162.86	-8.02	-165.69	1,028.89	718.02	310.87	3.310	
7,600.00	7,480.90	7,480.90	7,480.90	25.81	296.94	162.86	-8.02	-165.69	1,028.89	713.83	315.07	3.266	
7,700.00	7,580.90	7,580.90	7,580.90	25.95	300.94	162.86	-8.02	-165.69	1,028.89	709.63	319.27	3.223	
7,800.00	7,680.90	7,680.90	7,680.90	26.09	304.94	162.86	-8.02	-165.69	1,028.89	705.43	323.47	3.181	
7,900.00	7,780.90	7,780.90	7,780.90	26.23	308.94	162.86	-8.02	-165.69	1,028.89	701.23	327.67	3.140	
7,992.10	7,873.00	7,873.00	7,873.00	26.36	312.62	162.86	-8.02	-165.69	1,028.89	697.36	331.53	3.103	

Company:	US ROCKIES REGION PLANNING	Local Co-ordinate Reference:	Well P_EVERIST 7-32
Project:	COLORADO NORTHERN ZONE - 83	TVD Reference:	WELL @ 4823.00ft (Original Well Elev)
Reference Site:	WELD_EVERIST 4 PAD	MD Reference:	WELL @ 4823.00ft (Original Well Elev)
Site Error:	0.00ft	North Reference:	True
Reference Well:	P_EVERIST 7-32	Survey Calculation Method:	Minimum Curvature
Well Error:	0.00ft	Output errors are at	2.00 sigma
Reference Wellbore	P_EVERIST 7-32	Database:	EDM 2003.21 Single User Db
Reference Design:	PLAN #1 3-16-10 RHS	Offset TVD Reference:	Offset Datum

Offset Design WELD_EVERIST 4 PAD - P_EVERIST 25-32 - P_EVERIST 25-32 - PLAN #1 3-16-10 RHS												Offset Site Error:	0.00 ft
Survey Program: 0-MWD												Offset Well Error:	0.00 ft
Measured Depth (ft)	Vertical Depth (ft)	Measured Depth (ft)	Vertical Depth (ft)	Reference (ft)	Offset (ft)	Highside Toolface (°)	Offset Wellbore Centre +N/-S (ft)	+E/-W (ft)	Between Centres (ft)	Between Ellipses (ft)	Minimum Separation (ft)	Separation Factor	Warning
0.00	0.00	0.00	0.00	0.00	0.00	-92.77	-0.72	-14.81	14.83				
100.00	100.00	100.00	100.00	0.10	0.10	-92.77	-0.72	-14.81	14.83	14.63	0.19	77.602	
200.00	200.00	200.00	200.00	0.32	0.32	-92.77	-0.72	-14.81	14.83	14.19	0.64	23.145	
300.00	300.00	300.00	300.00	0.55	0.55	-92.77	-0.72	-14.81	14.83	13.74	1.09	13.600	
400.00	400.00	400.00	400.00	0.77	0.77	-92.77	-0.72	-14.81	14.83	13.29	1.54	9.629	
500.00	500.00	500.00	500.00	0.99	0.99	-92.77	-0.72	-14.81	14.83	12.84	1.99	7.453	
600.00	600.00	600.00	600.00	1.22	1.22	-92.77	-0.72	-14.81	14.83	12.39	2.44	6.079	
700.00	700.00	700.00	700.00	1.44	1.44	-92.77	-0.72	-14.81	14.83	11.94	2.89	5.133	
740.00	740.00	740.00	740.00	1.53	1.53	-92.77	-0.72	-14.81	14.83	11.76	3.07	4.832 CC, ES	
800.00	800.00	799.73	799.73	1.67	1.66	-68.07	-0.43	-15.36	15.12	11.79	3.33	4.539	
900.00	899.92	899.24	899.16	1.89	1.88	-73.27	1.35	-18.72	17.01	13.25	3.76	4.520 SF	
1,000.00	999.64	998.64	998.29	2.12	2.10	-80.43	4.73	-25.12	20.91	16.70	4.21	4.966	
1,100.00	1,099.05	1,097.86	1,096.93	2.37	2.35	-87.05	9.71	-34.55	27.03	22.35	4.69	5.768	
1,200.00	1,198.03	1,196.83	1,194.89	2.64	2.62	-92.16	16.26	-46.95	35.45	30.24	5.21	6.801	
1,300.00	1,296.44	1,295.48	1,292.01	2.94	2.92	-95.83	24.36	-62.28	46.13	40.32	5.81	7.946	
1,398.60	1,392.81	1,392.39	1,386.76	3.29	3.27	-98.37	33.84	-80.20	58.82	52.35	6.47	9.089	
1,400.00	1,394.18	1,393.76	1,388.10	3.29	3.28	-98.40	33.98	-80.48	59.01	52.53	6.48	9.105	
1,500.00	1,491.55	1,492.67	1,484.40	3.68	3.67	-100.18	44.54	-100.46	73.12	65.88	7.23	10.110	
1,600.00	1,588.92	1,591.65	1,580.76	4.09	4.08	-101.37	55.11	-120.47	87.27	79.25	8.02	10.879	
1,700.00	1,686.28	1,690.63	1,677.12	4.52	4.51	-102.23	65.68	-140.47	101.45	92.61	8.84	11.476	
1,800.00	1,783.65	1,789.61	1,773.48	4.95	4.95	-102.88	76.25	-160.47	115.64	105.96	9.68	11.948	
1,900.00	1,881.02	1,888.59	1,869.84	5.39	5.40	-103.39	86.82	-180.48	129.85	119.32	10.53	12.328	
2,000.00	1,978.39	1,987.57	1,966.19	5.84	5.86	-103.80	97.39	-200.48	144.07	132.67	11.40	12.637	
2,100.00	2,075.76	2,086.55	2,062.55	6.29	6.31	-104.13	107.96	-220.49	158.29	146.01	12.28	12.893	
2,200.00	2,173.13	2,185.53	2,158.91	6.75	6.78	-104.41	118.53	-240.49	172.51	159.35	13.16	13.108	
2,300.00	2,270.50	2,284.51	2,255.27	7.21	7.24	-104.65	129.10	-260.49	186.74	172.69	14.05	13.290	
2,400.00	2,367.87	2,383.49	2,351.63	7.67	7.71	-104.85	139.67	-280.50	200.97	186.03	14.95	13.446	
2,500.00	2,465.24	2,482.47	2,447.99	8.14	8.18	-105.02	150.24	-300.50	215.21	199.36	15.85	13.580	
2,600.00	2,562.61	2,581.45	2,544.35	8.61	8.66	-105.18	160.81	-320.51	229.44	212.69	16.75	13.698	
2,700.00	2,659.97	2,680.43	2,640.71	9.08	9.13	-105.31	171.38	-340.51	243.68	226.02	17.66	13.801	
2,800.00	2,757.34	2,779.41	2,737.07	9.55	9.61	-105.44	181.95	-360.51	257.92	239.35	18.57	13.892	
2,900.00	2,854.71	2,878.39	2,833.43	10.02	10.08	-105.54	192.52	-380.52	272.16	252.68	19.48	13.973	
3,000.00	2,952.08	2,977.37	2,929.79	10.49	10.56	-105.64	203.09	-400.52	286.40	266.01	20.39	14.046	
3,100.00	3,049.45	3,076.35	3,026.15	10.96	11.04	-105.73	213.66	-420.53	300.64	279.34	21.31	14.111	
3,200.00	3,146.82	3,175.33	3,122.51	11.44	11.52	-105.81	224.23	-440.53	314.88	292.66	22.22	14.170	
3,300.00	3,244.19	3,274.31	3,218.87	11.91	12.00	-105.88	234.79	-460.54	329.12	305.98	23.14	14.224	
3,400.00	3,341.56	3,373.29	3,315.22	12.39	12.48	-105.95	245.36	-480.54	343.37	319.31	24.06	14.273	
3,500.00	3,438.93	3,472.27	3,411.58	12.86	12.96	-106.01	255.93	-500.54	357.61	332.63	24.98	14.317	
3,600.00	3,536.30	3,571.25	3,507.94	13.34	13.44	-106.07	266.50	-520.55	371.85	345.96	25.90	14.358	
3,700.00	3,633.66	3,670.23	3,604.30	13.81	13.92	-106.12	277.07	-540.55	386.10	359.28	26.82	14.396	
3,800.00	3,731.03	3,769.21	3,700.66	14.29	14.40	-106.17	287.64	-560.56	400.34	372.60	27.74	14.431	
3,900.00	3,828.40	3,868.19	3,797.02	14.77	14.89	-106.22	298.21	-580.56	414.59	385.92	28.66	14.464	
4,000.00	3,925.77	3,967.17	3,893.38	15.25	15.37	-106.26	308.78	-600.56	428.83	399.24	29.59	14.494	
4,100.00	4,023.14	4,066.15	3,989.74	15.72	15.85	-106.30	319.35	-620.57	443.07	412.56	30.51	14.522	
4,200.00	4,120.51	4,165.13	4,086.10	16.20	16.33	-106.34	329.92	-640.57	457.32	425.88	31.44	14.548	
4,300.00	4,217.88	4,264.11	4,182.46	16.68	16.82	-106.38	340.49	-660.58	471.57	439.20	32.36	14.572	
4,400.00	4,315.25	4,363.09	4,278.82	17.16	17.30	-106.41	351.06	-680.58	485.81	452.52	33.29	14.595	
4,500.00	4,412.62	4,462.07	4,375.18	17.64	17.79	-106.44	361.63	-700.58	500.06	465.84	34.21	14.617	
4,600.00	4,509.99	4,561.05	4,471.54	18.12	18.27	-106.47	372.20	-720.59	514.30	479.16	35.14	14.637	
4,700.00	4,607.36	4,660.03	4,567.90	18.59	18.75	-106.50	382.77	-740.59	528.55	492.48	36.06	14.656	
4,800.00	4,704.72	4,759.01	4,664.25	19.07	19.24	-106.52	393.34	-760.60	542.79	505.80	36.99	14.674	
4,900.00	4,802.09	4,857.99	4,760.61	19.55	19.72	-106.55	403.91	-780.60	557.04	519.12	37.92	14.691	

CC - Min centre to center distance or convergent point, SF - min separation factor, ES - min ellipse separation

Company:	US ROCKIES REGION PLANNING	Local Co-ordinate Reference:	Well P_EVERIST 7-32
Project:	COLORADO NORTHERN ZONE - 83	TVD Reference:	WELL @ 4823.00ft (Original Well Elev)
Reference Site:	WELD_EVERIST 4 PAD	MD Reference:	WELL @ 4823.00ft (Original Well Elev)
Site Error:	0.00ft	North Reference:	True
Reference Well:	P_EVERIST 7-32	Survey Calculation Method:	Minimum Curvature
Well Error:	0.00ft	Output errors are at	2.00 sigma
Reference Wellbore	P_EVERIST 7-32	Database:	EDM 2003.21 Single User Db
Reference Design:	PLAN #1 3-16-10 RHS	Offset TVD Reference:	Offset Datum

Offset Design WELD_EVERIST 4 PAD - P_EVERIST 25-32 - P_EVERIST 25-32 - PLAN #1 3-16-10 RHS												Offset Site Error:	0.00 ft
Survey Program: 0-MWD												Offset Well Error:	0.00 ft
Reference	Offset	Semi Major Axis		Distance									
Measured Depth (ft)	Vertical Depth (ft)	Measured Depth (ft)	Vertical Depth (ft)	Reference (ft)	Offset (ft)	Highside Toolface (°)	Offset Wellbore Centre +N/-S (ft)	+E/-W (ft)	Between Centres (ft)	Between Ellipses (ft)	Minimum Separation (ft)	Separation Factor	Warning
5,000.00	4,899.46	4,956.97	4,856.97	20.03	20.21	-106.57	414.48	-800.60	571.29	532.44	38.84	14.707	
5,100.00	4,996.83	5,055.95	4,953.33	20.51	20.69	-106.60	425.05	-820.61	585.53	545.76	39.77	14.722	
5,200.00	5,094.20	5,154.93	5,049.69	20.99	21.18	-106.62	435.62	-840.61	599.78	559.08	40.70	14.737	
5,300.00	5,191.57	5,253.91	5,146.05	21.47	21.66	-106.64	446.19	-860.62	614.02	572.40	41.63	14.750	
5,400.00	5,288.94	5,352.89	5,242.41	21.95	22.15	-106.66	456.76	-880.62	628.27	585.72	42.56	14.764	
5,485.50	5,372.19	5,437.51	5,324.79	22.36	22.56	-106.68	465.79	-897.72	640.45	597.10	43.35	14.774	
5,500.00	5,386.32	5,451.87	5,338.77	22.42	22.63	-106.71	467.33	-900.63	642.51	599.03	43.48	14.777	
5,600.00	5,484.17	5,556.71	5,441.07	22.77	23.05	-106.87	478.04	-920.90	655.79	611.54	44.25	14.819	
5,700.00	5,582.68	5,664.17	5,546.70	23.08	23.39	-107.00	487.26	-938.36	666.92	622.00	44.92	14.848	
5,800.00	5,681.73	5,772.04	5,653.39	23.35	23.69	-107.10	494.65	-952.34	675.80	630.31	45.49	14.856	
5,900.00	5,781.20	5,880.23	5,760.93	23.58	23.94	-107.18	500.17	-962.79	682.43	636.46	45.97	14.844	
6,000.00	5,880.96	5,988.65	5,869.07	23.76	24.14	-107.23	503.80	-969.65	686.80	640.43	46.36	14.813	
6,100.00	5,980.90	6,097.20	5,977.55	23.90	24.29	-107.27	505.51	-972.89	688.88	642.22	46.66	14.763	
6,144.10	6,025.00	6,144.65	6,025.00	23.95	24.34	-132.95	505.66	-973.16	689.08	642.31	46.77	14.735	
6,200.00	6,080.90	6,200.56	6,080.90	24.01	24.40	-132.95	505.66	-973.16	689.08	642.19	46.89	14.695	
6,300.00	6,180.90	6,300.56	6,180.90	24.13	24.52	-132.95	505.66	-973.16	689.08	641.94	47.14	14.618	
6,400.00	6,280.90	6,400.56	6,280.90	24.25	24.64	-132.95	505.66	-973.16	689.08	641.69	47.39	14.541	
6,500.00	6,380.90	6,500.56	6,380.90	24.37	24.76	-132.95	505.66	-973.16	689.08	641.44	47.64	14.464	
6,600.00	6,480.90	6,600.56	6,480.90	24.50	24.89	-132.95	505.66	-973.16	689.08	641.18	47.90	14.387	
6,700.00	6,580.90	6,700.56	6,580.90	24.62	25.01	-132.95	505.66	-973.16	689.08	640.92	48.15	14.310	
6,800.00	6,680.90	6,800.56	6,680.90	24.75	25.14	-132.95	505.66	-973.16	689.08	640.66	48.42	14.232	
6,900.00	6,780.90	6,900.56	6,780.90	24.88	25.27	-132.95	505.66	-973.16	689.08	640.40	48.68	14.155	
7,000.00	6,880.90	7,000.56	6,880.90	25.01	25.40	-132.95	505.66	-973.16	689.08	640.13	48.95	14.078	
7,100.00	6,980.90	7,100.56	6,980.90	25.14	25.53	-132.95	505.66	-973.16	689.08	639.86	49.22	14.001	
7,200.00	7,080.90	7,200.56	7,080.90	25.27	25.66	-132.95	505.66	-973.16	689.08	639.59	49.49	13.924	
7,300.00	7,180.90	7,300.56	7,180.90	25.41	25.80	-132.95	505.66	-973.16	689.08	639.31	49.76	13.847	
7,400.00	7,280.90	7,400.56	7,280.90	25.54	25.93	-132.95	505.66	-973.16	689.08	639.04	50.04	13.771	
7,500.00	7,380.90	7,500.56	7,380.90	25.68	26.07	-132.95	505.66	-973.16	689.08	638.76	50.32	13.694	
7,600.00	7,480.90	7,600.56	7,480.90	25.81	26.21	-132.95	505.66	-973.16	689.08	638.47	50.60	13.618	
7,700.00	7,580.90	7,700.56	7,580.90	25.95	26.34	-132.95	505.66	-973.16	689.08	638.19	50.89	13.542	
7,800.00	7,680.90	7,800.56	7,680.90	26.09	26.48	-132.95	505.66	-973.16	689.08	637.90	51.17	13.466	
7,900.00	7,780.90	7,900.56	7,780.90	26.23	26.62	-132.95	505.66	-973.16	689.08	637.61	51.46	13.390	
7,959.64	7,840.54	7,960.19	7,840.54	26.32	26.71	-132.95	505.66	-973.16	689.08	637.44	51.64	13.345	
7,992.10	7,873.00	7,987.65	7,868.00	26.36	26.75	-132.95	505.66	-973.16	689.09	637.37	51.72	13.323	

Company:	US ROCKIES REGION PLANNING	Local Co-ordinate Reference:	Well P_EVERIST 7-32
Project:	COLORADO NORTHERN ZONE - 83	TVD Reference:	WELL @ 4823.00ft (Original Well Elev)
Reference Site:	WELD_EVERIST 4 PAD	MD Reference:	WELL @ 4823.00ft (Original Well Elev)
Site Error:	0.00ft	North Reference:	True
Reference Well:	P_EVERIST 7-32	Survey Calculation Method:	Minimum Curvature
Well Error:	0.00ft	Output errors are at	2.00 sigma
Reference Wellbore	P_EVERIST 7-32	Database:	EDM 2003.21 Single User Db
Reference Design:	PLAN #1 3-16-10 RHS	Offset TVD Reference:	Offset Datum

Offset Design WELD_EVERIST 4 PAD - P_EVERIST 28-5 - P_EVERIST 28-5 - PLAN #1 3-16-10 RHS												Offset Site Error:	0.00 ft
Survey Program: 0-MWD												Offset Well Error:	0.00 ft
Measured Depth (ft)	Vertical Depth (ft)	Measured Depth (ft)	Vertical Depth (ft)	Reference (ft)	Offset (ft)	Highside Toolface (°)	Offset Wellbore Centre +N/-S (ft)	+E/-W (ft)	Between Centres (ft)	Between Ellipses (ft)	Minimum Separation (ft)	Separation Factor	Warning
0.00	0.00	0.00	0.00	0.00	0.00	89.99	0.00	15.93	15.93				
100.00	100.00	100.00	100.00	0.10	0.10	89.99	0.00	15.93	15.93	15.74	0.19	83.362	
200.00	200.00	200.00	200.00	0.32	0.32	89.99	0.00	15.93	15.93	15.29	0.64	24.862	
300.00	300.00	300.00	300.00	0.55	0.55	89.99	0.00	15.93	15.93	14.84	1.09	14.610	
400.00	400.00	400.18	400.16	0.77	0.75	96.02	-1.61	15.24	15.33	13.81	1.52	10.116	
488.47	488.47	488.61	488.47	0.97	0.92	112.92	-5.71	13.51	14.67	12.78	1.89	7.762 CC	
500.00	500.00	500.11	499.95	0.99	0.94	115.96	-6.43	13.21	14.69	12.75	1.94	7.578 ES	
600.00	600.00	599.55	599.01	1.22	1.18	145.69	-14.41	9.83	17.47	15.10	2.37	7.364 SF	
700.00	700.00	698.28	697.00	1.44	1.45	168.54	-25.46	5.16	26.15	23.34	2.80	9.326	
740.00	740.00	737.52	735.82	1.53	1.57	174.53	-30.71	2.94	31.13	28.15	2.98	10.444	
800.00	800.00	795.99	793.52	1.67	1.76	-153.54	-39.44	-0.75	40.53	37.26	3.27	12.389	
900.00	899.92	892.02	887.82	1.89	2.12	-148.37	-56.14	-7.81	61.65	57.93	3.71	16.596	
1,000.00	999.64	985.84	979.31	2.12	2.52	-146.38	-75.25	-15.89	88.91	84.74	4.16	21.353	
1,100.00	1,099.05	1,076.99	1,067.50	2.37	2.96	-145.67	-96.45	-24.86	121.93	117.31	4.62	26.400	
1,200.00	1,198.03	1,165.08	1,151.99	2.64	3.43	-145.47	-119.39	-34.55	160.47	155.39	5.08	31.588	
1,300.00	1,296.44	1,249.76	1,232.46	2.94	3.93	-145.45	-143.68	-44.83	204.29	198.74	5.55	36.820	
1,398.60	1,392.81	1,329.66	1,307.63	3.29	4.44	-145.45	-168.60	-55.36	252.42	246.41	6.02	41.951	
1,400.00	1,394.18	1,330.77	1,308.67	3.29	4.45	-145.46	-168.96	-55.51	253.14	247.12	6.02	42.019	
1,500.00	1,491.55	1,408.66	1,381.19	3.68	4.98	-145.95	-195.13	-66.58	305.51	298.96	6.56	46.600	
1,600.00	1,588.92	1,484.08	1,450.66	4.09	5.53	-146.18	-222.19	-78.02	360.06	352.97	7.10	50.727	
1,700.00	1,686.28	1,559.70	1,519.53	4.52	6.12	-146.26	-250.93	-90.17	416.60	408.95	7.65	54.435	
1,800.00	1,783.65	1,641.80	1,594.08	4.95	6.78	-146.30	-282.61	-103.57	473.69	465.45	8.24	57.480	
1,900.00	1,881.02	1,723.90	1,668.64	5.39	7.44	-146.33	-314.28	-116.96	530.78	521.94	8.84	60.069	
2,000.00	1,978.39	1,806.01	1,743.19	5.84	8.10	-146.36	-345.96	-130.35	587.87	578.43	9.44	62.285	
2,100.00	2,075.76	1,888.11	1,817.74	6.29	8.76	-146.38	-377.63	-143.75	644.95	634.91	10.05	64.197	
2,200.00	2,173.13	1,970.21	1,892.30	6.75	9.43	-146.40	-409.31	-157.14	702.04	691.38	10.66	65.862	
2,300.00	2,270.50	2,052.32	1,966.85	7.21	10.10	-146.42	-440.98	-170.53	759.13	747.85	11.28	67.324	
2,400.00	2,367.87	2,134.42	2,041.41	7.67	10.78	-146.43	-472.66	-183.92	816.22	804.32	11.90	68.615	
2,500.00	2,465.24	2,216.52	2,115.96	8.14	11.45	-146.44	-504.33	-197.32	873.30	860.79	12.52	69.763	
2,600.00	2,562.61	2,298.63	2,190.51	8.61	12.12	-146.45	-536.01	-210.71	930.39	917.25	13.14	70.790	
2,700.00	2,659.97	2,380.73	2,265.07	9.08	12.80	-146.46	-567.68	-224.10	987.48	973.71	13.77	71.711	
2,800.00	2,757.34	2,462.83	2,339.62	9.55	13.47	-146.47	-599.36	-237.49	1,044.57	1,030.17	14.40	72.544	
2,900.00	2,854.71	2,544.94	2,414.18	10.02	14.15	-146.48	-631.03	-250.89	1,101.66	1,086.63	15.03	73.299	
3,000.00	2,952.08	2,627.04	2,488.73	10.49	14.83	-146.48	-662.71	-264.28	1,158.74	1,143.08	15.66	73.987	
3,100.00	3,049.45	2,709.14	2,563.29	10.96	15.50	-146.49	-694.38	-277.67	1,215.83	1,199.54	16.29	74.616	
3,200.00	3,146.82	2,791.25	2,637.84	11.44	16.18	-146.49	-726.06	-291.06	1,272.92	1,255.99	16.93	75.193	
3,300.00	3,244.19	2,873.35	2,712.39	11.91	16.86	-146.50	-757.73	-304.46	1,330.01	1,312.44	17.56	75.724	
3,400.00	3,341.56	2,955.46	2,786.95	12.39	17.54	-146.50	-789.41	-317.85	1,387.09	1,368.89	18.20	76.215	
3,500.00	3,438.93	3,037.56	2,861.50	12.86	18.21	-146.51	-821.08	-331.24	1,444.18	1,425.35	18.84	76.669	
3,600.00	3,536.30	3,119.66	2,936.06	13.34	18.89	-146.51	-852.76	-344.63	1,501.27	1,481.80	19.47	77.091	
3,700.00	3,633.66	3,201.77	3,010.61	13.81	19.57	-146.52	-884.43	-358.03	1,558.36	1,538.25	20.11	77.484	
3,800.00	3,731.03	3,283.87	3,085.16	14.29	20.25	-146.52	-916.11	-371.42	1,615.45	1,594.70	20.75	77.850	
3,900.00	3,828.40	3,365.97	3,159.72	14.77	20.93	-146.52	-947.78	-384.81	1,672.53	1,651.14	21.39	78.192	
4,000.00	3,925.77	3,448.08	3,234.27	15.25	21.61	-146.53	-979.46	-398.21	1,729.62	1,707.59	22.03	78.513	
4,100.00	4,023.14	3,530.18	3,308.83	15.72	22.29	-146.53	-1,011.13	-411.60	1,786.71	1,764.04	22.67	78.815	
4,200.00	4,120.51	3,612.28	3,383.38	16.20	22.97	-146.53	-1,042.81	-424.99	1,843.80	1,820.49	23.31	79.098	
4,300.00	4,217.88	3,694.39	3,457.93	16.68	23.65	-146.53	-1,074.48	-438.38	1,900.89	1,876.93	23.95	79.365	
4,400.00	4,315.25	3,776.49	3,532.49	17.16	24.33	-146.54	-1,106.16	-451.78	1,957.97	1,933.38	24.59	79.617	
4,500.00	4,412.62	3,858.59	3,607.04	17.64	25.01	-146.54	-1,137.83	-465.17	2,015.06	1,989.83	25.23	79.855	
4,600.00	4,509.99	3,940.70	3,681.60	18.12	25.69	-146.54	-1,169.50	-478.56	2,072.15	2,046.27	25.88	80.080	
4,700.00	4,607.36	4,022.80	3,756.15	18.59	26.37	-146.54	-1,201.18	-491.95	2,129.24	2,102.72	26.52	80.294	
4,800.00	4,704.72	4,104.90	3,830.71	19.07	27.05	-146.54	-1,232.85	-505.35	2,186.32	2,159.16	27.16	80.497	

CC - Min centre to center distance or convergent point, SF - min separation factor, ES - min ellipse separation

Company:	US ROCKIES REGION PLANNING	Local Co-ordinate Reference:	Well P_EVERIST 7-32
Project:	COLORADO NORTHERN ZONE - 83	TVD Reference:	WELL @ 4823.00ft (Original Well Elev)
Reference Site:	WELD_EVERIST 4 PAD	MD Reference:	WELL @ 4823.00ft (Original Well Elev)
Site Error:	0.00ft	North Reference:	True
Reference Well:	P_EVERIST 7-32	Survey Calculation Method:	Minimum Curvature
Well Error:	0.00ft	Output errors are at	2.00 sigma
Reference Wellbore	P_EVERIST 7-32	Database:	EDM 2003.21 Single User Db
Reference Design:	PLAN #1 3-16-10 RHS	Offset TVD Reference:	Offset Datum

Offset Design WELD_EVERIST 4 PAD - P_EVERIST 28-5 - P_EVERIST 28-5 - PLAN #1 3-16-10 RHS												Offset Site Error:	0.00 ft
Survey Program: 0-MWD												Offset Well Error:	0.00 ft
Reference	Offset	Semi Major Axis		Distance									
Measured Depth (ft)	Vertical Depth (ft)	Measured Depth (ft)	Vertical Depth (ft)	Reference (ft)	Offset (ft)	Highside Toolface (°)	Offset Wellbore Centre +N/-S (ft)	+E/-W (ft)	Between Centres (ft)	Between Ellipses (ft)	Minimum Separation (ft)	Separation Factor	Warning
4,900.00	4,802.09	4,187.01	3,905.26	19.55	27.73	-146.55	-1,264.53	-518.74	2,243.41	2,215.61	27.80	80.690	
5,000.00	4,899.46	4,269.11	3,979.81	20.03	28.41	-146.55	-1,296.20	-532.13	2,300.50	2,272.05	28.45	80.873	
5,100.00	4,996.83	4,351.21	4,054.37	20.51	29.09	-146.55	-1,327.88	-545.52	2,357.59	2,328.50	29.09	81.048	
5,200.00	5,094.20	4,433.32	4,128.92	20.99	29.77	-146.55	-1,359.55	-558.92	2,414.68	2,384.94	29.73	81.215	
5,300.00	5,191.57	4,515.42	4,203.48	21.47	30.45	-146.55	-1,391.23	-572.31	2,471.76	2,441.39	30.38	81.374	
5,400.00	5,288.94	4,597.52	4,278.03	21.95	31.13	-146.55	-1,422.90	-585.70	2,528.85	2,497.83	31.02	81.526	
5,485.50	5,372.19	4,667.72	4,341.77	22.36	31.72	-146.55	-1,449.98	-597.15	2,577.66	2,546.09	31.57	81.651	
5,500.00	5,386.32	4,679.64	4,352.60	22.42	31.82	-146.66	-1,454.58	-599.10	2,585.91	2,554.21	31.70	81.563	
5,600.00	5,484.17	4,762.80	4,428.11	22.77	32.50	-147.36	-1,486.66	-612.66	2,641.44	2,608.86	32.58	81.071	
5,700.00	5,582.68	4,847.50	4,505.02	23.08	33.21	-147.95	-1,519.34	-626.48	2,694.51	2,661.08	33.43	80.606	
5,800.00	5,681.73	4,933.64	4,583.24	23.35	33.92	-148.45	-1,552.57	-640.53	2,745.04	2,710.81	34.24	80.179	
5,900.00	5,781.20	5,021.12	4,662.68	23.58	34.65	-148.86	-1,586.32	-654.80	2,793.01	2,758.00	35.00	79.796	
6,000.00	5,880.96	5,109.84	4,743.24	23.76	35.38	-149.19	-1,620.55	-669.27	2,838.35	2,802.63	35.72	79.460	
6,100.00	5,980.90	5,199.68	4,824.82	23.90	36.13	-149.45	-1,655.21	-683.93	2,881.03	2,844.64	36.39	79.175	
6,144.10	6,025.00	5,239.63	4,861.09	23.95	36.46	-175.21	-1,670.62	-690.44	2,899.00	2,862.33	36.67	79.065	
6,200.00	6,080.90	5,290.39	4,907.19	24.01	36.88	-175.07	-1,690.21	-698.72	2,921.45	2,884.51	36.93	79.099	
6,300.00	6,180.90	5,381.20	4,989.65	24.13	37.63	-174.82	-1,725.24	-713.53	2,961.65	2,924.22	37.43	79.123	
6,400.00	6,280.90	5,472.00	5,072.10	24.25	38.39	-174.58	-1,760.27	-728.35	3,001.89	2,963.97	37.93	79.149	
6,500.00	6,380.90	5,562.81	5,154.56	24.37	39.14	-174.35	-1,795.30	-743.16	3,042.18	3,003.76	38.42	79.178	
6,600.00	6,480.90	5,653.61	5,237.01	24.50	39.89	-174.12	-1,830.33	-757.97	3,082.51	3,043.60	38.92	79.207	
6,700.00	6,580.90	5,744.42	5,319.47	24.62	40.65	-173.89	-1,865.37	-772.78	3,122.89	3,083.48	39.41	79.239	
6,800.00	6,680.90	5,835.22	5,401.92	24.75	41.40	-173.67	-1,900.40	-787.59	3,163.30	3,123.40	39.91	79.271	
6,900.00	6,780.90	5,926.03	5,484.38	24.88	42.16	-173.46	-1,935.43	-802.41	3,203.75	3,163.35	40.40	79.304	
7,000.00	6,880.90	6,016.84	5,566.84	25.01	42.91	-173.24	-1,970.46	-817.22	3,244.20	3,203.80	40.89	79.337	
7,100.00	6,980.90	6,107.65	5,647.59	25.14	43.66	-173.02	-2,005.49	-832.03	3,284.65	3,243.85	41.38	79.370	
7,200.00	7,080.90	6,198.46	5,728.34	25.27	44.41	-172.80	-2,040.52	-846.84	3,325.10	3,284.30	41.87	79.403	
7,300.00	7,180.90	6,289.27	5,809.09	25.41	45.16	-172.58	-2,075.55	-861.65	3,365.55	3,324.75	42.36	79.436	
7,400.00	7,280.90	6,380.08	5,889.84	25.54	45.91	-172.36	-2,110.58	-876.46	3,406.00	3,365.20	42.85	79.469	
7,500.00	7,380.90	6,470.89	5,970.59	25.68	46.66	-172.14	-2,145.61	-891.27	3,446.45	3,405.65	43.34	79.502	
7,600.00	7,480.90	6,561.70	6,051.34	25.81	47.41	-171.92	-2,180.64	-906.08	3,486.90	3,446.10	43.83	79.535	
7,700.00	7,580.90	6,652.51	6,132.09	25.95	48.16	-171.70	-2,215.67	-920.89	3,527.35	3,486.55	44.32	79.568	
7,800.00	7,680.90	6,743.32	6,212.84	26.09	48.91	-171.48	-2,250.70	-935.70	3,567.80	3,527.00	44.81	79.601	
7,900.00	7,780.90	6,834.13	6,293.59	26.23	49.66	-171.26	-2,285.73	-950.51	3,608.25	3,567.45	45.30	79.634	
7,956.35	7,837.26	6,880.90	6,340.36	26.31	49.91	-171.04	-2,300.76	-955.32	3,623.28	3,582.48	45.54	79.653	
7,992.10	7,873.00	6,916.64	6,376.10	26.36	50.16	-170.82	-2,315.79	-960.13	3,638.31	3,597.51	45.78	79.672	

Company:	US ROCKIES REGION PLANNING	Local Co-ordinate Reference:	Well P_EVERIST 7-32
Project:	COLORADO NORTHERN ZONE - 83	TVD Reference:	WELL @ 4823.00ft (Original Well Elev)
Reference Site:	WELD_EVERIST 4 PAD	MD Reference:	WELL @ 4823.00ft (Original Well Elev)
Site Error:	0.00ft	North Reference:	True
Reference Well:	P_EVERIST 7-32	Survey Calculation Method:	Minimum Curvature
Well Error:	0.00ft	Output errors are at	2.00 sigma
Reference Wellbore	P_EVERIST 7-32	Database:	EDM 2003.21 Single User Db
Reference Design:	PLAN #1 3-16-10 RHS	Offset TVD Reference:	Offset Datum

Offset Design WELD_EVERIST 4 PAD - P_EVERIST 40-32 - P_EVERIST 40-32 - PLAN #1 3-16-10 RHS												Offset Site Error:	0.00 ft
Survey Program: 0-MWD												Offset Well Error:	0.00 ft
Measured Depth (ft)	Vertical Depth (ft)	Measured Depth (ft)	Vertical Depth (ft)	Reference (ft)	Offset (ft)	Highside Toolface (°)	Offset Wellbore Centre +N/-S (ft)	+E/-W (ft)	Between Centres (ft)	Between Ellipses (ft)	Minimum Separation (ft)	Separation Factor	Warning
0.00	0.00	0.00	0.00	0.00	0.00	90.66	-0.36	31.85	31.85				
100.00	100.00	100.00	100.00	0.10	0.10	90.66	-0.36	31.85	31.85	31.66	0.19	166.734	
200.00	200.00	200.00	200.00	0.32	0.32	90.66	-0.36	31.85	31.85	31.21	0.64	49.728	
300.00	300.00	300.00	300.00	0.55	0.55	90.66	-0.36	31.85	31.85	30.76	1.09	29.221	
400.00	400.00	400.00	400.00	0.77	0.77	90.66	-0.36	31.85	31.85	30.32	1.54	20.690	
500.00	500.00	500.00	500.00	0.99	0.99	90.66	-0.36	31.85	31.85	29.87	1.99	16.014	
600.00	600.00	600.00	600.00	1.22	1.22	90.66	-0.36	31.85	31.85	29.42	2.44	13.062	
700.00	700.00	700.00	700.00	1.44	1.44	90.66	-0.36	31.85	31.85	28.97	2.89	11.029	
740.00	740.00	740.00	740.00	1.53	1.53	90.66	-0.36	31.85	31.85	28.79	3.07	10.383 CC, ES	
800.00	800.00	799.34	799.34	1.67	1.66	117.03	-0.22	32.45	32.74	29.41	3.33	9.836 SF	
900.00	899.92	898.00	897.92	1.89	1.87	120.55	0.66	36.09	38.22	34.47	3.75	10.188	
1,000.00	999.64	995.97	995.63	2.12	2.09	125.01	2.32	42.96	48.95	44.77	4.18	11.711	
1,100.00	1,099.05	1,092.85	1,091.96	2.37	2.32	128.82	4.74	52.95	65.04	60.42	4.62	14.089	
1,200.00	1,198.03	1,188.24	1,186.42	2.64	2.58	131.58	7.86	65.87	86.45	81.39	5.07	17.059	
1,300.00	1,296.44	1,281.79	1,278.57	2.94	2.86	133.46	11.65	81.50	113.06	107.52	5.54	20.401	
1,398.60	1,392.81	1,371.90	1,366.79	3.29	3.18	134.68	15.96	99.32	144.21	138.17	6.04	23.887	
1,400.00	1,394.18	1,373.17	1,368.02	3.29	3.18	134.70	16.02	99.58	144.68	138.64	6.04	23.936	
1,500.00	1,491.55	1,462.56	1,454.92	3.68	3.54	135.62	20.95	119.95	179.96	173.36	6.60	27.265	
1,600.00	1,588.92	1,550.25	1,539.49	4.09	3.94	135.79	26.40	142.48	217.60	210.41	7.18	30.285	
1,700.00	1,686.28	1,636.13	1,621.59	4.52	4.37	135.54	32.33	166.97	257.51	249.72	7.79	33.036	
1,800.00	1,783.65	1,720.11	1,701.10	4.95	4.84	135.05	38.68	193.23	299.65	291.22	8.43	35.565	
1,900.00	1,881.02	1,807.15	1,782.83	5.39	5.38	134.44	45.71	222.32	343.55	334.45	9.09	37.782	
2,000.00	1,978.39	1,896.86	1,867.01	5.84	5.95	133.94	53.01	252.47	387.62	377.84	9.79	39.613	
2,100.00	2,075.76	1,986.58	1,951.20	6.29	6.54	133.55	60.30	282.61	431.72	421.23	10.49	41.157	
2,200.00	2,173.13	2,076.29	2,035.38	6.75	7.14	133.22	67.60	312.76	475.83	464.63	11.20	42.744	
2,300.00	2,270.50	2,166.01	2,119.56	7.21	7.74	132.95	74.89	342.91	519.95	508.02	11.92	43.605	
2,400.00	2,367.87	2,255.73	2,203.75	7.67	8.35	132.73	82.18	373.06	564.08	551.42	12.65	44.586	
2,500.00	2,465.24	2,345.44	2,287.93	8.14	8.97	132.53	89.48	403.21	608.21	594.83	13.38	45.443	
2,600.00	2,562.61	2,435.16	2,372.12	8.61	9.59	132.37	96.77	433.35	652.35	638.23	14.12	46.196	
2,700.00	2,659.97	2,524.88	2,456.30	9.08	10.21	132.22	104.06	463.50	696.49	681.63	14.86	46.863	
2,800.00	2,757.34	2,614.59	2,540.49	9.55	10.83	132.09	111.36	493.65	740.64	725.03	15.61	47.457	
2,900.00	2,854.71	2,704.31	2,624.67	10.02	11.46	131.98	118.65	523.80	784.78	768.43	16.35	47.988	
3,000.00	2,952.08	2,794.03	2,708.85	10.49	12.09	131.87	125.94	553.95	828.94	811.83	17.10	48.466	
3,100.00	3,049.45	2,883.74	2,793.04	10.96	12.72	131.78	133.24	584.09	873.09	855.23	17.86	48.898	
3,200.00	3,146.82	2,973.46	2,877.22	11.44	13.35	131.70	140.53	614.24	917.24	898.63	18.61	49.291	
3,300.00	3,244.19	3,063.18	2,961.41	11.91	13.98	131.62	147.82	644.39	961.40	942.03	19.36	49.648	
3,400.00	3,341.56	3,152.89	3,045.59	12.39	14.62	131.55	155.12	674.54	1,005.55	985.43	20.12	49.975	
3,500.00	3,438.93	3,242.61	3,129.77	12.86	15.25	131.49	162.41	704.68	1,049.71	1,028.83	20.88	50.275	
3,600.00	3,536.30	3,332.33	3,213.96	13.34	15.89	131.43	169.70	734.83	1,093.87	1,072.23	21.64	50.552	
3,700.00	3,633.66	3,422.04	3,298.14	13.81	16.52	131.38	177.00	764.98	1,138.03	1,115.63	22.40	50.807	
3,800.00	3,731.03	3,511.76	3,382.33	14.29	17.16	131.33	184.29	795.13	1,182.19	1,159.03	23.16	51.044	
3,900.00	3,828.40	3,601.48	3,466.61	14.77	17.80	131.29	191.59	825.28	1,226.35	1,202.43	23.92	51.264	
4,000.00	3,925.77	3,691.19	3,550.69	15.25	18.44	131.24	198.88	855.42	1,270.51	1,245.83	24.69	51.468	
4,100.00	4,023.14	3,780.91	3,634.88	15.72	19.08	131.20	206.17	885.57	1,314.68	1,289.23	25.45	51.659	
4,200.00	4,120.51	3,870.63	3,719.06	16.20	19.71	131.17	213.47	915.72	1,358.84	1,332.62	26.21	51.837	
4,300.00	4,217.88	3,960.34	3,803.25	16.68	20.35	131.13	220.76	945.87	1,403.00	1,376.02	26.98	52.004	
4,400.00	4,315.25	4,050.06	3,887.43	17.16	20.99	131.10	228.05	976.02	1,447.16	1,419.42	27.74	52.161	
4,500.00	4,412.62	4,139.77	3,971.61	17.64	21.63	131.07	235.35	1,006.16	1,491.33	1,462.82	28.51	52.309	
4,600.00	4,509.99	4,229.49	4,055.80	18.12	22.27	131.04	242.64	1,036.31	1,535.49	1,506.22	29.28	52.448	
4,700.00	4,607.36	4,319.21	4,139.98	18.59	22.91	131.01	249.93	1,066.46	1,579.66	1,549.61	30.04	52.579	
4,800.00	4,704.72	4,408.92	4,224.17	19.07	23.55	130.98	257.23	1,096.61	1,623.82	1,593.01	30.81	52.703	
4,900.00	4,802.09	4,498.64	4,308.35	19.55	24.19	130.96	264.52	1,126.75	1,667.99	1,636.41	31.58	52.820	

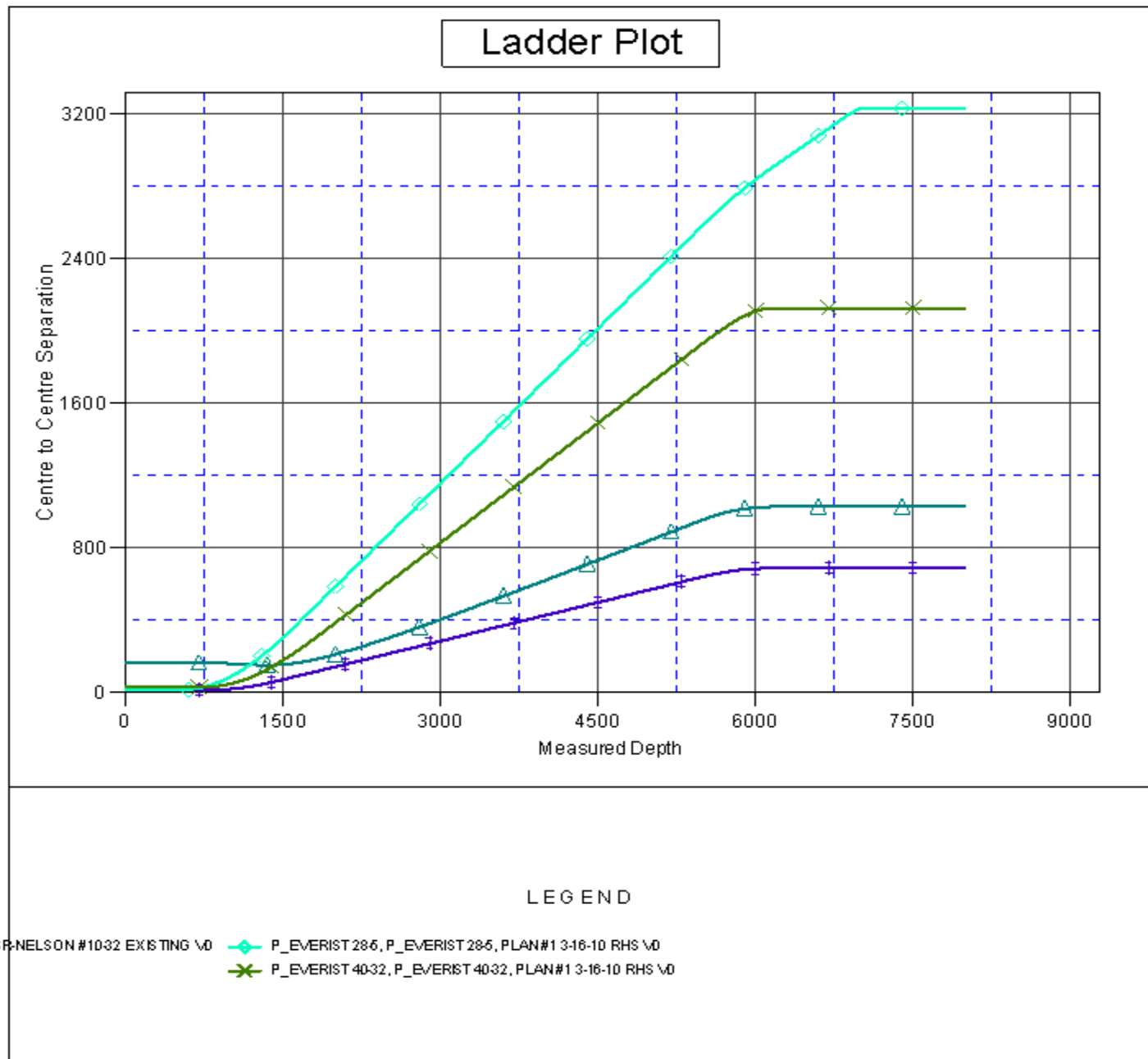
CC - Min centre to center distance or convergent point, SF - min separation factor, ES - min ellipse separation

Company:	US ROCKIES REGION PLANNING	Local Co-ordinate Reference:	Well P_EVERIST 7-32
Project:	COLORADO NORTHERN ZONE - 83	TVD Reference:	WELL @ 4823.00ft (Original Well Elev)
Reference Site:	WELD_EVERIST 4 PAD	MD Reference:	WELL @ 4823.00ft (Original Well Elev)
Site Error:	0.00ft	North Reference:	True
Reference Well:	P_EVERIST 7-32	Survey Calculation Method:	Minimum Curvature
Well Error:	0.00ft	Output errors are at	2.00 sigma
Reference Wellbore	P_EVERIST 7-32	Database:	EDM 2003.21 Single User Db
Reference Design:	PLAN #1 3-16-10 RHS	Offset TVD Reference:	Offset Datum

Offset Design WELD_EVERIST 4 PAD - P_EVERIST 40-32 - P_EVERIST 40-32 - PLAN #1 3-16-10 RHS												Offset Site Error:	0.00 ft
Survey Program: 0-MWD												Offset Well Error:	0.00 ft
Reference		Offset		Semi Major Axis			Distance						
Measured Depth (ft)	Vertical Depth (ft)	Measured Depth (ft)	Vertical Depth (ft)	Reference (ft)	Offset (ft)	Highside Toolface (°)	Offset Wellbore Centre +N/-S (ft)	+E/-W (ft)	Between Centres (ft)	Between Ellipses (ft)	Minimum Separation (ft)	Separation Factor	Warning
5,000.00	4,899.46	4,588.36	4,392.54	20.03	24.84	130.94	271.81	1,156.90	1,712.15	1,679.81	32.35	52.932	
5,100.00	4,996.83	4,678.07	4,476.72	20.51	25.48	130.91	279.11	1,187.05	1,756.32	1,723.20	33.11	53.037	
5,200.00	5,094.20	4,767.79	4,560.90	20.99	26.12	130.89	286.40	1,217.20	1,800.48	1,766.60	33.88	53.138	
5,300.00	5,191.57	4,857.51	4,645.09	21.47	26.76	130.87	293.70	1,247.35	1,844.65	1,810.00	34.65	53.233	
5,400.00	5,288.94	4,947.22	4,729.27	21.95	27.40	130.85	300.99	1,277.49	1,888.82	1,853.39	35.42	53.324	
5,485.50	5,372.19	5,023.93	4,801.25	22.36	27.95	130.84	307.22	1,303.27	1,926.58	1,890.50	36.08	53.398	
5,500.00	5,386.32	5,036.95	4,813.47	22.42	28.04	130.94	308.28	1,307.65	1,932.96	1,896.74	36.22	53.366	
5,600.00	5,484.17	5,127.28	4,898.22	22.77	28.69	131.58	315.63	1,338.00	1,975.79	1,938.66	37.13	53.207	
5,700.00	5,582.68	5,218.47	4,983.80	23.08	29.34	132.10	323.04	1,368.64	2,016.53	1,978.53	38.00	53.065	
5,800.00	5,681.73	5,310.43	5,070.08	23.35	30.00	132.49	330.52	1,399.54	2,055.14	2,016.32	38.82	52.944	
5,900.00	5,781.20	5,553.97	5,301.81	23.58	31.29	132.41	348.08	1,472.14	2,088.38	2,048.39	39.99	52.218	
6,000.00	5,880.96	5,818.35	5,559.54	23.76	32.30	132.31	361.83	1,528.99	2,112.00	2,071.01	40.99	51.523	
6,100.00	5,980.90	6,093.16	5,831.96	23.90	32.98	132.20	370.14	1,563.35	2,125.34	2,083.57	41.76	50.889	
6,144.10	6,025.00	6,216.23	5,954.81	23.95	33.16	106.48	371.87	1,570.47	2,127.84	2,085.81	42.02	50.633	
6,200.00	6,080.90	6,342.36	6,080.90	24.01	33.29	106.45	372.36	1,572.50	2,128.48	2,086.23	42.25	50.377	
6,300.00	6,180.90	6,442.36	6,180.90	24.13	33.37	106.45	372.36	1,572.50	2,128.48	2,085.97	42.51	50.071	
6,400.00	6,280.90	6,542.36	6,280.90	24.25	33.46	106.45	372.36	1,572.50	2,128.48	2,085.71	42.77	49.763	
6,500.00	6,380.90	6,642.36	6,380.90	24.37	33.55	106.45	372.36	1,572.50	2,128.48	2,085.44	43.04	49.455	
6,600.00	6,480.90	6,742.36	6,480.90	24.50	33.64	106.45	372.36	1,572.50	2,128.48	2,085.17	43.31	49.148	
6,700.00	6,580.90	6,842.36	6,580.90	24.62	33.73	106.45	372.36	1,572.50	2,128.48	2,084.90	43.58	48.841	
6,800.00	6,680.90	6,942.36	6,680.90	24.75	33.82	106.45	372.36	1,572.50	2,128.48	2,084.63	43.86	48.534	
6,900.00	6,780.90	7,042.36	6,780.90	24.88	33.92	106.45	372.36	1,572.50	2,128.48	2,084.35	44.13	48.228	
7,000.00	6,880.90	7,142.36	6,880.90	25.01	34.02	106.45	372.36	1,572.50	2,128.48	2,084.07	44.41	47.923	
7,100.00	6,980.90	7,242.36	6,980.90	25.14	34.11	106.45	372.36	1,572.50	2,128.48	2,083.78	44.70	47.619	
7,200.00	7,080.90	7,342.36	7,080.90	25.27	34.21	106.45	372.36	1,572.50	2,128.48	2,083.50	44.98	47.316	
7,300.00	7,180.90	7,442.36	7,180.90	25.41	34.31	106.45	372.36	1,572.50	2,128.48	2,083.21	45.27	47.014	
7,400.00	7,280.90	7,542.36	7,280.90	25.54	34.41	106.45	372.36	1,572.50	2,128.48	2,082.92	45.56	46.713	
7,500.00	7,380.90	7,642.36	7,380.90	25.68	34.51	106.45	372.36	1,572.50	2,128.48	2,082.62	45.86	46.414	
7,600.00	7,480.90	7,742.36	7,480.90	25.81	34.62	106.45	372.36	1,572.50	2,128.48	2,082.33	46.16	46.116	
7,700.00	7,580.90	7,842.36	7,580.90	25.95	34.72	106.45	372.36	1,572.50	2,128.48	2,082.03	46.45	45.819	
7,800.00	7,680.90	7,942.36	7,680.90	26.09	34.83	106.45	372.36	1,572.50	2,128.48	2,081.73	46.76	45.523	
7,900.00	7,780.90	8,042.36	7,780.90	26.23	34.93	106.45	372.36	1,572.50	2,128.48	2,081.42	47.06	45.229	
7,953.94	7,834.84	8,096.30	7,834.84	26.31	34.99	106.45	372.36	1,572.50	2,128.48	2,081.26	47.22	45.072	
7,992.10	7,873.00	8,116.45	7,855.00	26.36	35.01	106.45	372.36	1,572.50	2,128.56	2,081.24	47.32	44.987	

Company:	US ROCKIES REGION PLANNING	Local Co-ordinate Reference:	Well P_EVERIST 7-32
Project:	COLORADO NORTHERN ZONE - 83	TVD Reference:	WELL @ 4823.00ft (Original Well Elev)
Reference Site:	WELD_EVERIST 4 PAD	MD Reference:	WELL @ 4823.00ft (Original Well Elev)
Site Error:	0.00ft	North Reference:	True
Reference Well:	P_EVERIST 7-32	Survey Calculation Method:	Minimum Curvature
Well Error:	0.00ft	Output errors are at	2.00 sigma
Reference Wellbore	P_EVERIST 7-32	Database:	EDM 2003.21 Single User Db
Reference Design:	PLAN #1 3-16-10 RHS	Offset TVD Reference:	Offset Datum

Reference Depths are relative to WELL @ 4823.00ft (Original Well Elev) Coordinates are relative to: P_EVERIST 7-32
Offset Depths are relative to Offset Datum Coordinate System is US State Plane 1983, Colorado Northern Zone
Central Meridian is 105° 30' 0.000 W ° Grid Convergence at Surface is: 0.38°



Reference Depths are relative to WELL @ 4823.00ft (Original Well ElevCoordinates are relative to: P_EVERIST 7-32
Offset Depths are relative to Offset Datum Coordinate System is US State Plane 1983, Colorado Northern Zone
Central Meridian is 105° 30' 0.000 W ° Grid Convergence at Surface is: 0.38°

