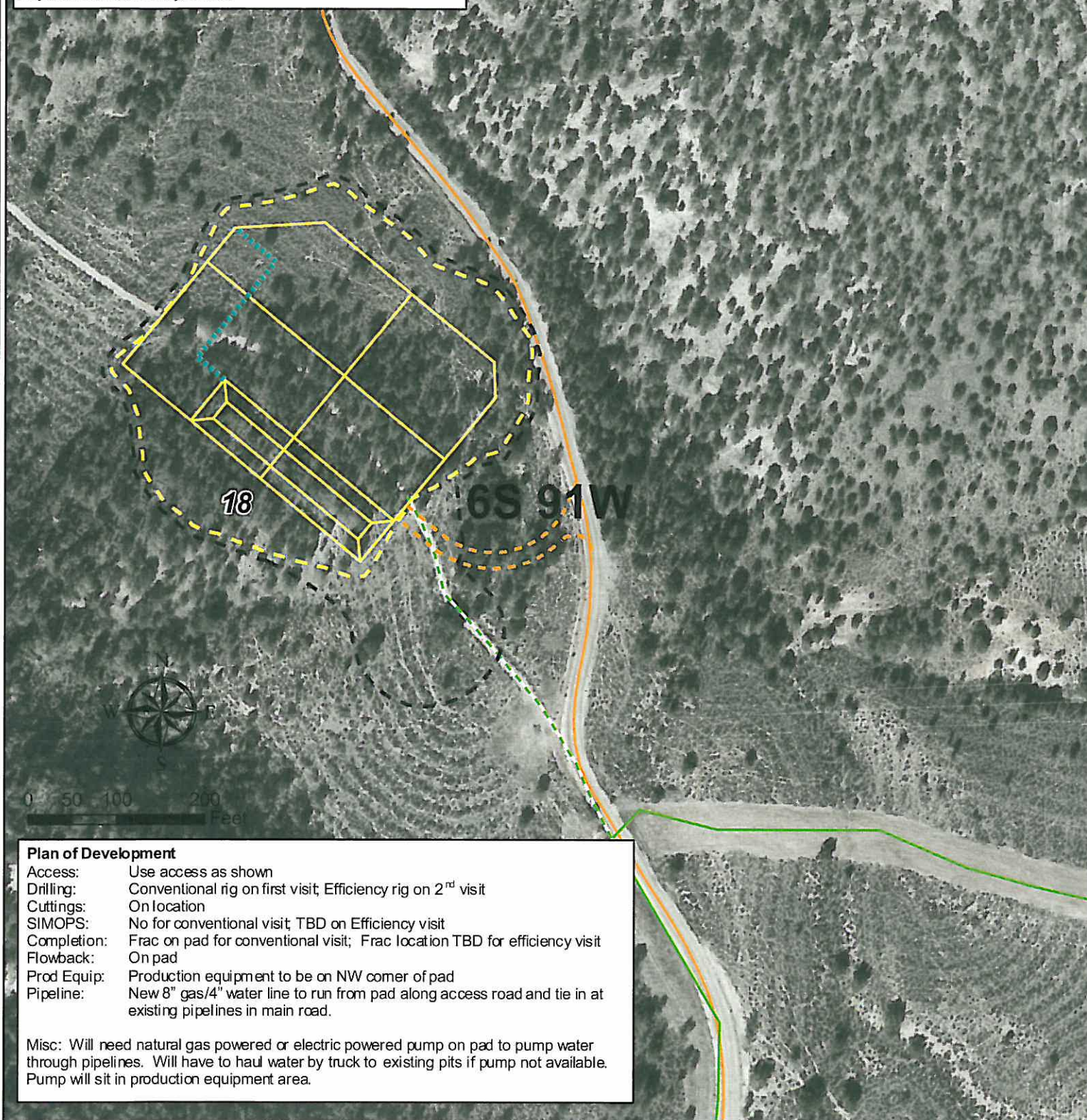


Geologist Information

General: New location, 14 new wells (4 first); 4 existing
Ownership: FED surface/ FED minerals
SUA Status: N/A - In BLM GAP
Spacing Units: All wells BH in section 18 - unspaced
Adjacent Owners: Jolley, McLin



Plan of Development

Access: Use access as shown
Drilling: Conventional rig on first visit; Efficiency rig on 2nd visit
Cuttings: On location
SIMOPS: No for conventional visit; TBD on Efficiency visit
Completion: Frac on pad for conventional visit; Frac location TBD for efficiency visit
Flowback: On pad
Prod Equip: Production equipment to be on NW corner of pad
Pipeline: New 8" gas/4" water line to run from pad along access road and tie in at existing pipelines in main road.

Misc: Will need natural gas powered or electric powered pump on pad to pump water through pipelines. Will have to haul water by truck to existing pits if pump not available. Pump will sit in production equipment area.

Legend

- - - Pipeline (Valley, Proposed)
- Pipeline (Valley)
- - - Proposed Road
- Proposed Production Equipment Area
- - - Proposed Limit of Disturbance
- Proposed Daylight Line
- Proposed Pad or Pit
- Existing Road

Williams Production RMT

KP 33-18 Plan of Development

Date Prepared: March 15, 2010

