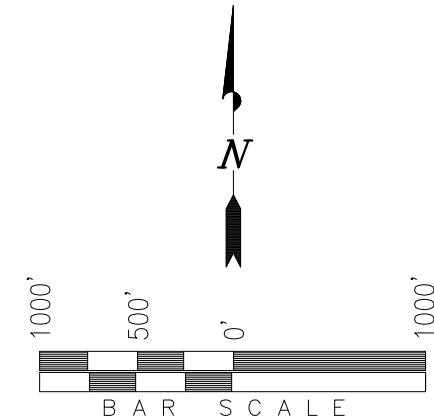


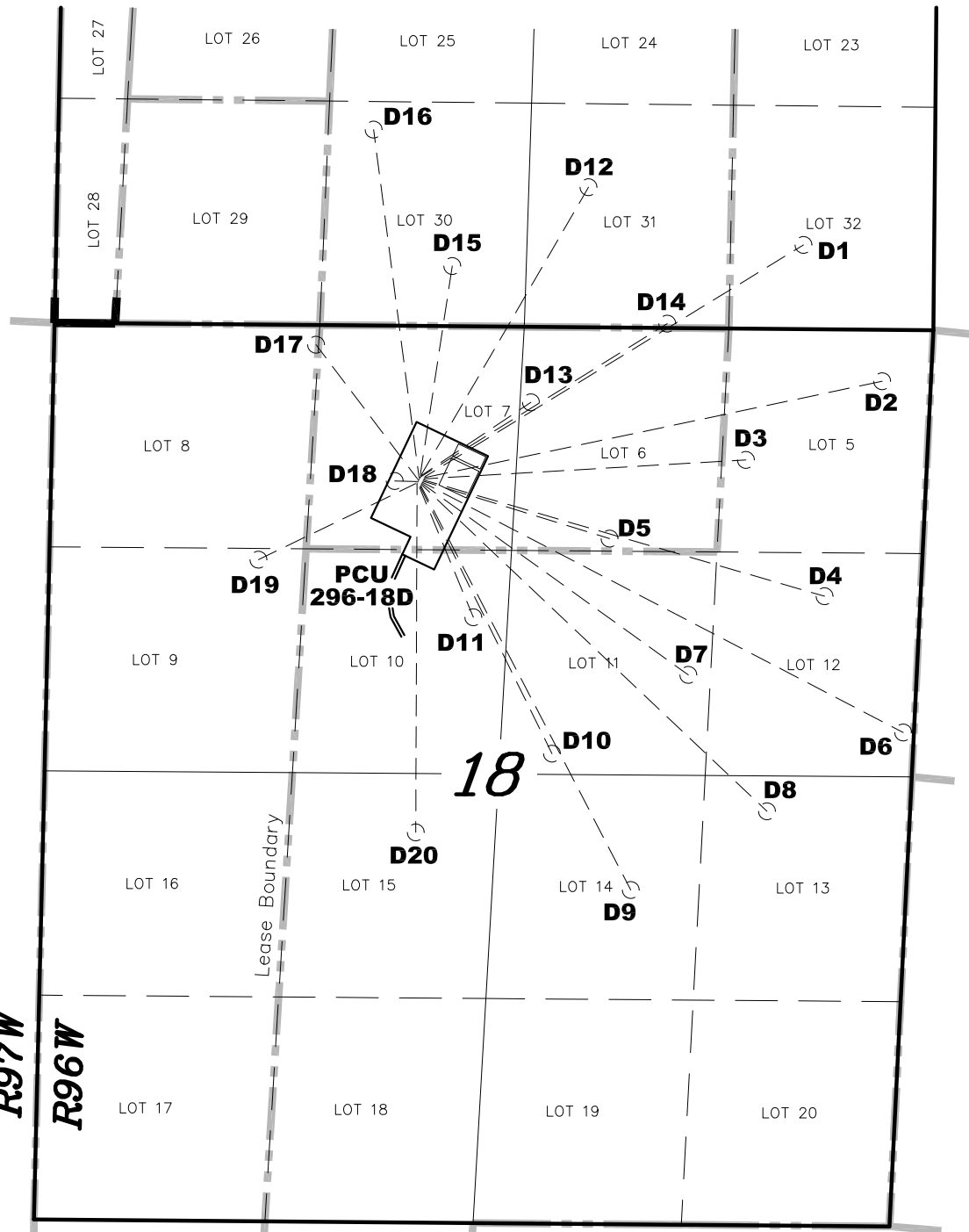
ExxonMobil Oil Corporation

MULTI-WELL PLAN

WELL PAD (PICEANCE CREEK UNIT 296-18D)
PICEANCE CREEK UNIT 296-18D1, D2, D3, D4,
D5, D6, D7, D8, D9, D10, D11, D12, D13, D14,
D15, D16, D17, D18, D19 & D20
Section 18, T2S, R96W, 6th P.M.
RIO BLANCO COUNTY, COLORADO.



R97W
R96W



TRI STATE LAND SURVEYING & CONSULTING

180 NORTH VERNAL AVE. - VERNAL, UTAH 84078
(435) 781-2501

DATE SURVEYED: 10-26-09	SURVEYED BY: S.V.	SHEET 1
DATE DRAWN: 12-11-09	DRAWN BY: F.T.M.	
REVISED: 01-21-10 F.T.M.	SCALE: 1" = 1000'	