

# Access Road Map

Proposed Location  
Piceance Creek Unit  
296-18D

NAD 83  
LAT: 39° 52' 54.31"  
LONG: 108° 12' 39.90"

CO83-NF NAD 83  
N: 1211400, E: 2239569

Well Pad Footages  
894' FNL, 2219' FWL

See Topo "B"

76

3a

±0.7 mi.

±1.6 mi.

3

±4.7 mi.

Rio Blanco ± 17.8 mi.  
Rifle ± 36.6 mi.

Revised: 12-17-2009 JAS

ExxonMobil Oil Corporation

Piceance Creek Unit 296-18D  
SEC. 18, T2S, R96W, 6th P.M.



*Tri-State  
Land Surveying Inc.*  
(435) 781-2501  
180 North Vernal Ave. Vernal, Utah 84078

SCALE: 1 : 100,000  
DRAWN BY: JAS  
DATE: 10-13-2009

## Legend

Existing Road

TOPOGRAPHIC MAP SHEET

"A"

6



# Access Road Map

Proposed Location  
Piceance Creek Unit  
296-18D

NAD 83  
LAT: 39° 52' 54.31"  
LONG: 108° 12' 39.90"

CO83-NF NAD 83  
N: 1211400, E: 2239559

Well Pad Footages  
894' FNL, 2219' FWL

Proposed  
Access ± 520'

Rio Blanco ± 23.3 mi.  
Rifle ± 42.1 mi.

Revised: 12-17-2009 JAS

ExxonMobil Oil Corporation

Piceance Creek Unit 296-18D  
SEC. 18, T2S, R96W, 6th P.M.

*Tri-State  
Land Surveying Inc.*  
(435) 761-2501

180 North Vernal Ave., Vernal, Utah 84078

SCALE: 1" = 2,000'

DRAWN BY: JAS

DATE: 10-13-2009

## Legend

Existing Road

Proposed Access

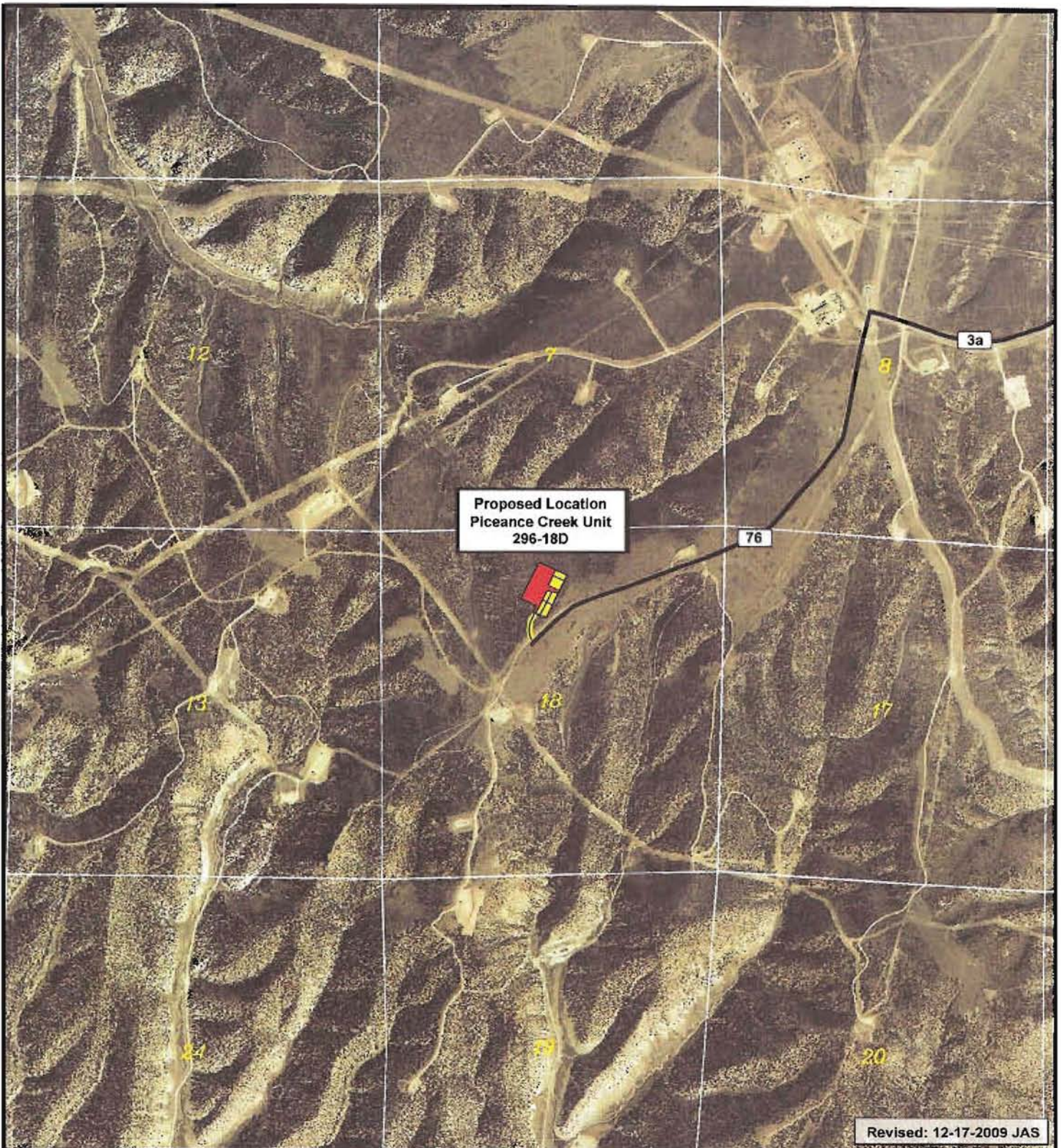
TOPOGRAPHIC MAP

"B"

SHEET

7





Revised: 12-17-2009 JAS

**ExxonMobil Oil Corporation**

**Piceance Creek Unit 296-18D  
SEC. 18, T2S, R96W, 6th P.M.**



*Tri-State  
Land Surveying Inc.*  
(435) 781-2501  
180 North Vernal Ave. Vernal, Utah 84078

SCALE: 1" = 2,000'

DRAWN BY: JAS

DATE: 10-13-2009

**Legend**

- Existing Road
- Proposed Access

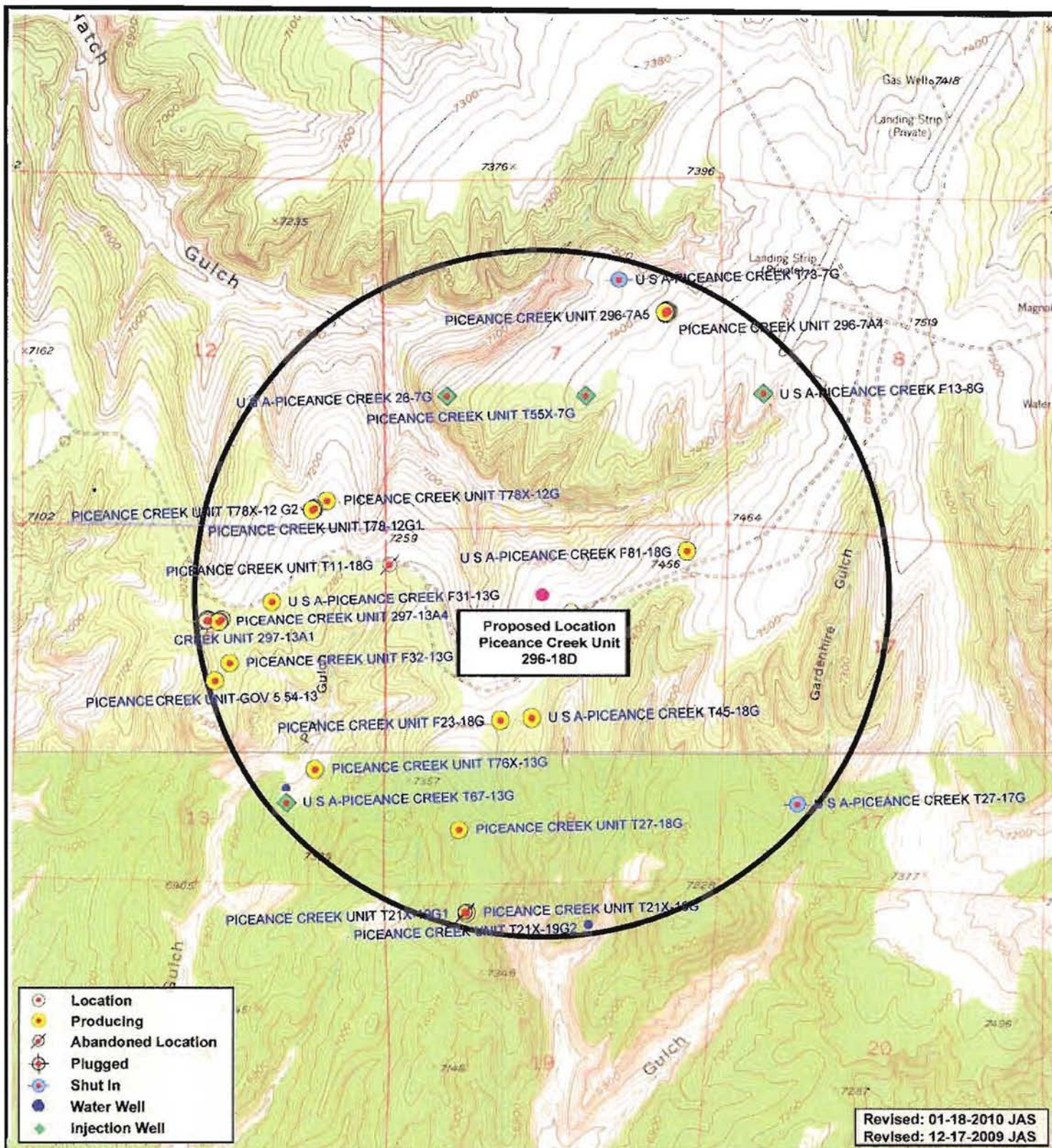
AERIAL MAP

**"B"**

SHEET

**7**





**ExxonMobil Oil Corporation**

**Piceance Creek Unit 296-18D  
SEC. 18, T2S, R96W, 6th P.M.**



*Tri-State  
Land Surveying Inc.*  
(435) 781-2501  
180 North Vernal Ave. Vernal, Utah 84078

SCALE: 1" = 2,000'  
DRAWN BY: JAS  
DATE: 10-13-2009

**Legend**

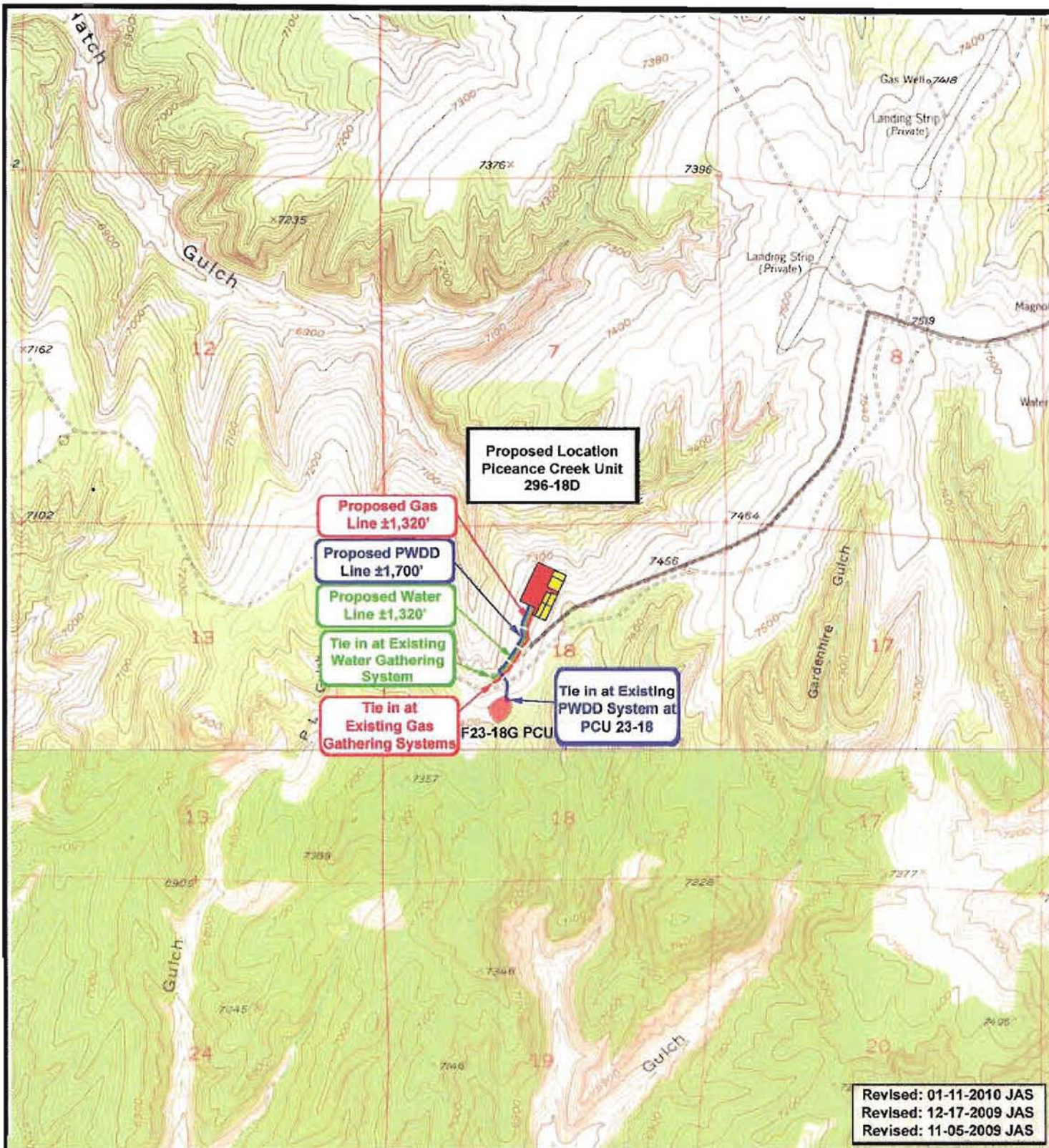
- Location
- One-Mile Radius

**TOPOGRAPHIC MAP**

**"C"**

**SHEET 8**





**ExxonMobil Oil Corporation**

**Piceance Creek Unit 296-18D  
SEC. 18, T2S, R96W, 6th P.M.**



**Tri-State  
Land Surveying Inc.**  
(435) 781-2501  
180 North Vernal Ave. Vernal, Utah 84078

**SCALE: 1" = 2,000'**

**DRAWN BY: JAS**

**DATE: 10-13-2009**

**Legend**

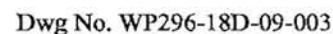
- Road
- Proposed Gas Line
- Proposed PWDD Line
- Proposed Water Line

**TOPOGRAPHIC MAP SHEET**

**"D"**

**9**



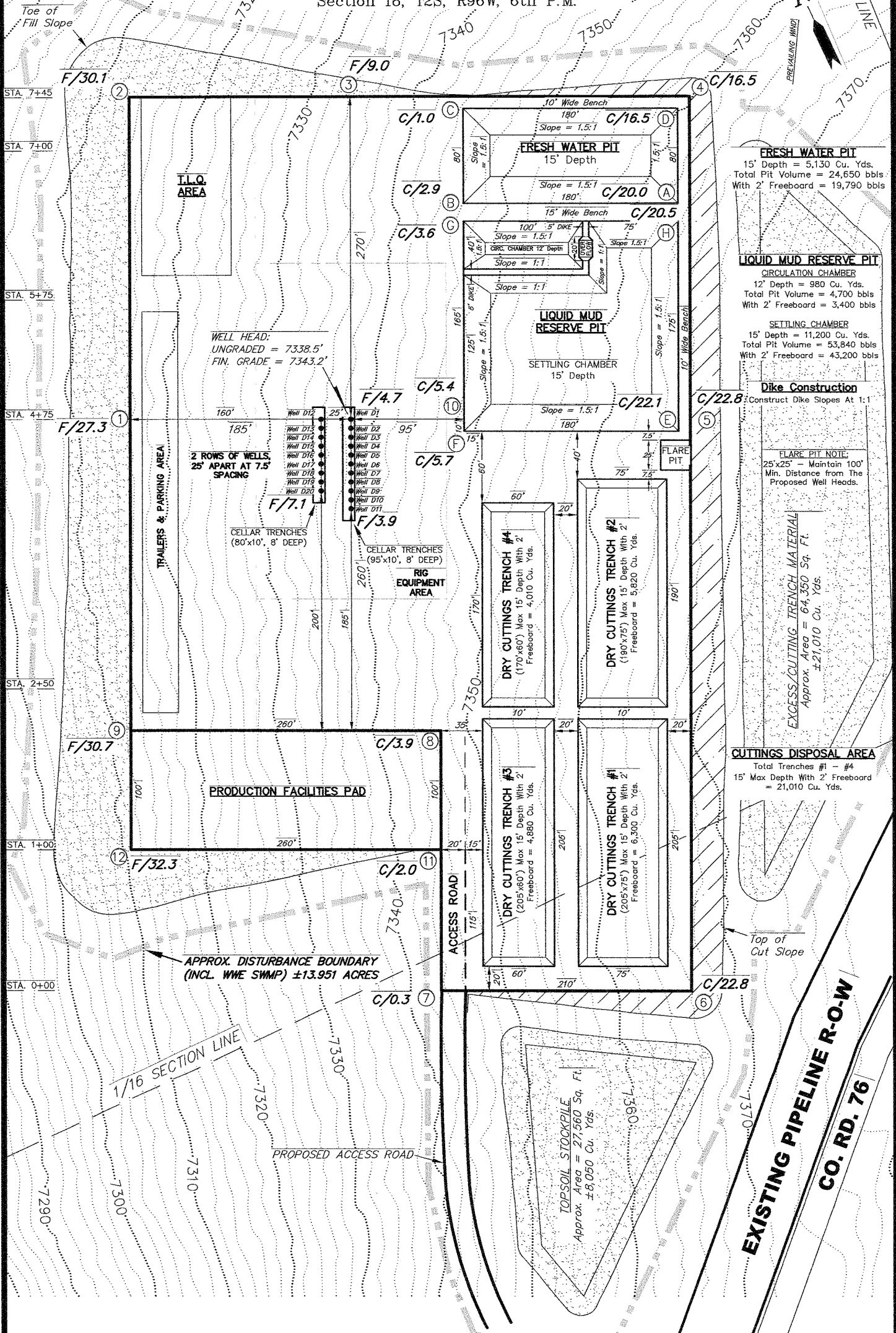




ExxonMobil Oil Corporation

LOCATION LAYOUT

WELL PAD (PICEANCE CREEK UNIT 296-18D)  
PICEANCE CREEK UNIT 296-18D1, D2, D3, D4,  
D5, D6, D7, D8, D9, D10, D11, D12, D13, D14,  
D15, D16, D17, D18, D19 & D20  
Section 18, T2S, R96W, 6th P.M.



NOTE:  
CUTS AND FILLS SHOWN ARE FOR THE INITIAL CONSTRUCTION OF PAD TO A  
SINGLE & LEVEL ELEVATION. ADDITIONAL EARTHWORK IS REQUIRED TO COMPLETE  
THE FINISH GRADING PLAN AS SHOWN ON SHEET 5.

NOTE:

The topsoil, excess material & temporary cuttings areas are  
calculated as being mounds containing 29,060 cubic yards of  
dirt (a 10% fluff factor is included). The mound areas are  
calculated with push slopes of 1.5:1 & fall slopes of 1.5:1.

SURVEYED BY:	S.V.	DATE SURVEYED:	09-19-09
DRAWN BY:	R.V.C.	DATE DRAWN:	10-12-09
SCALE:	1" = 100'	REVISED:	01-19-10 D.COX

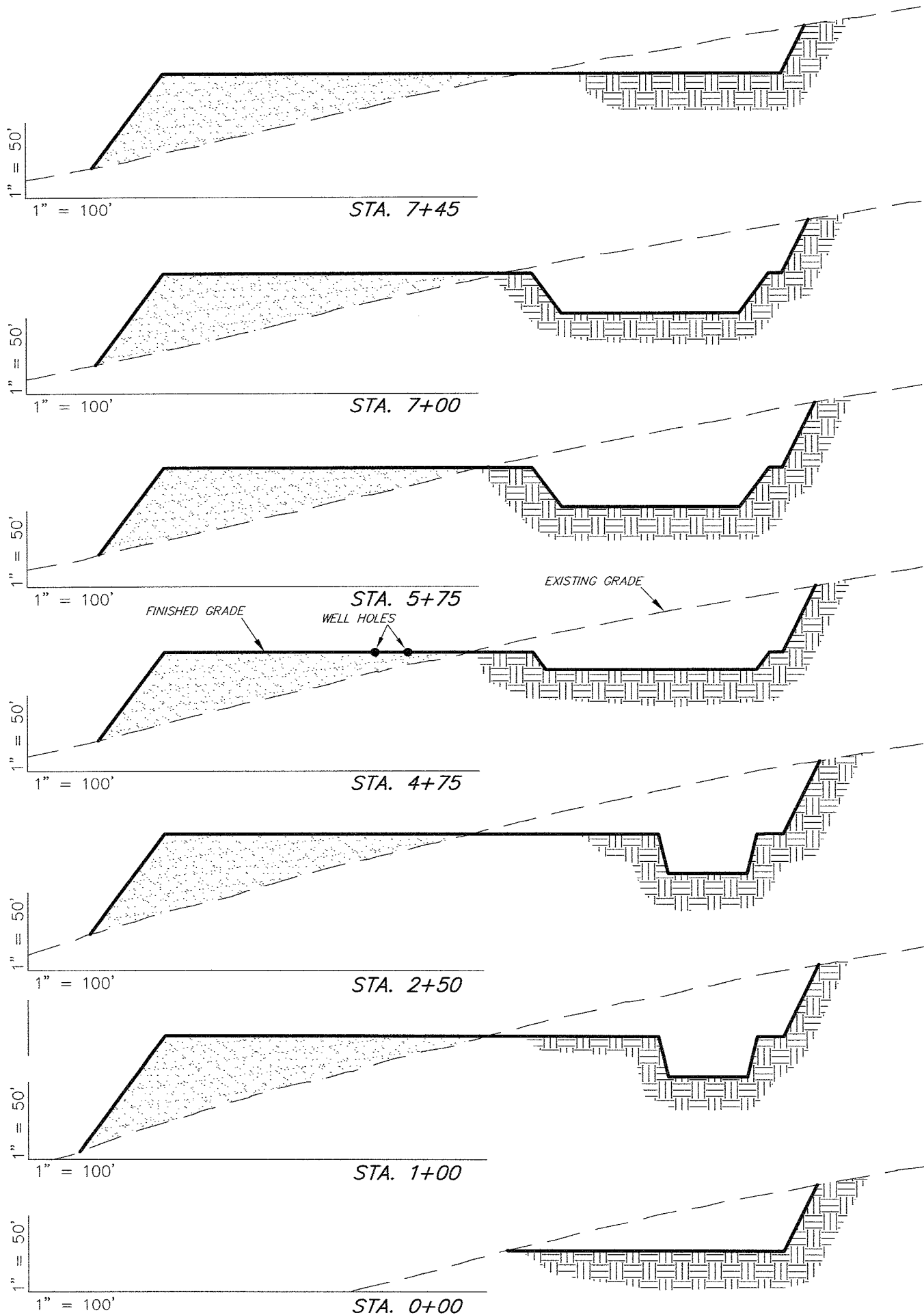
**Tri State**  
Land Surveying, Inc.  
180 NORTH VERNAL AVE. VERNAL, UTAH 84078  
(435) 781-2501

SHEET  
2

ExxonMobil Oil Corporation

CROSS SECTIONS

WELL PAD (PICEANCE CREEK UNIT 296-18D)  
PICEANCE CREEK UNIT 296-18D1, D2, D3, D4,  
D5, D6, D7, D8, D9, D10, D11, D12, D13, D14,  
D15, D16, D17, D18, D19 & D20  
Section 18, T2S, R96W, 6th P.M.



ESTIMATED EARTHWORK QUANTITIES (No Shrink or swell adjustments have been used) (Expressed in Cubic Yards)				
ITEM	CUT	FILL	6" TOPSOIL	EXCESS
CUTTINGS TRENCH 1 & 2	14,270	0	Topsoil is not included in Pad Cut	14,270
PITS	17,310	0		17,310
PAD	83,650	106,650	7,320	-23,000
TOTALS	115,230	106,650	7,320	8,580

NOTES:  
1.) UNLESS OTHERWISE NOTED, CUT SLOPES ARE AT 1:1  
& FILL SLOPES ARE AT 1.5:1.

SURVEYED BY: S.V. DATE SURVEYED: 09-19-09  
DRAWN BY: R.V.C. DATE DRAWN: 10-12-09  
SCALE: 1" = 100' REVISED: F.T.M. 12-17-09

Tri State  
Land Surveying, Inc.  
180 NORTH VERNAL AVE. VERNAL, UTAH 84078  
(435) 781-2501

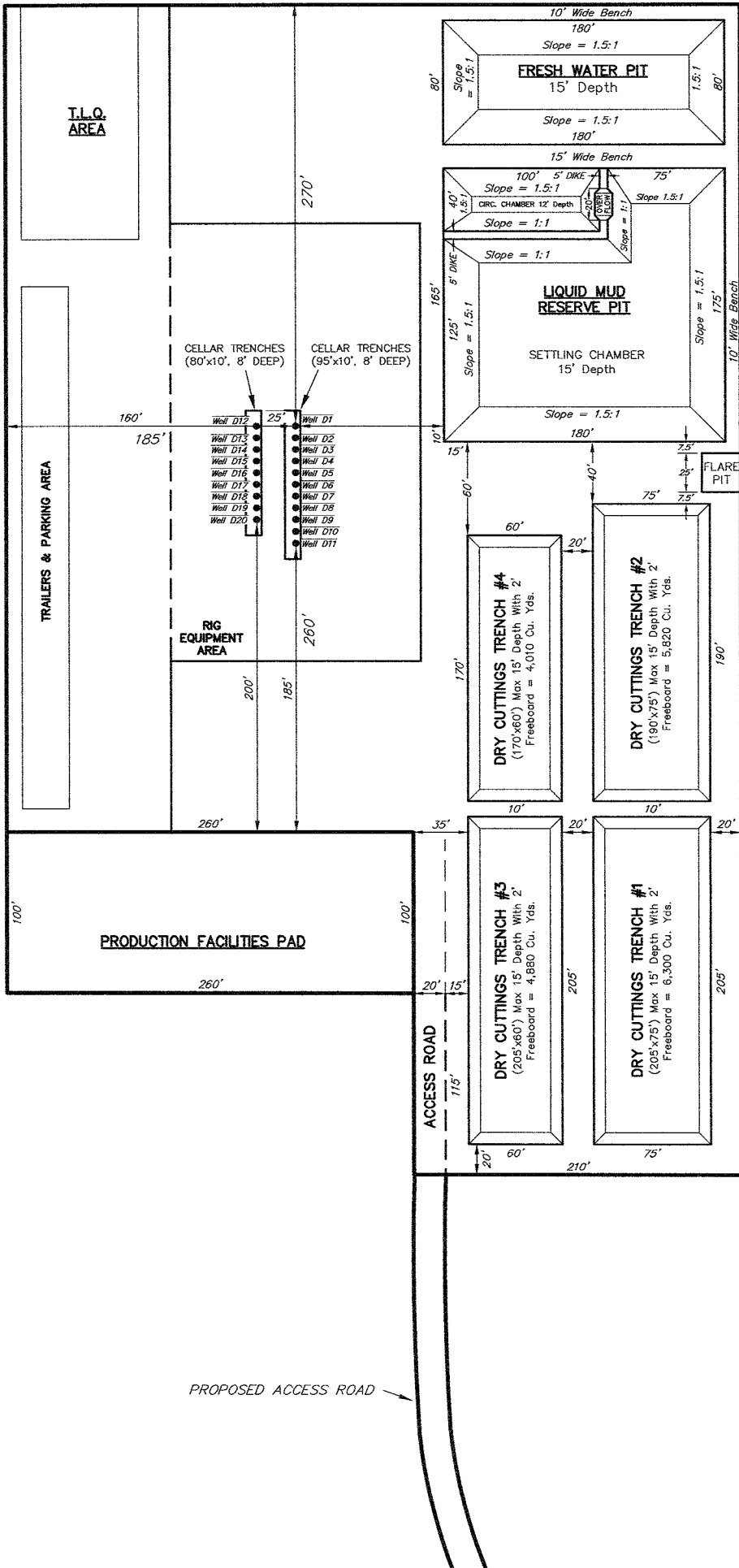
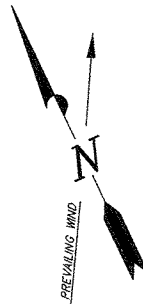
SHEET  
3



ExxonMobil Oil Corporation

TYPICAL RIG LAYOUT

WELL PAD (PICEANCE CREEK UNIT 296-18D)  
PICEANCE CREEK UNIT 296-18D1, D2, D3, D4,  
D5, D6, D7, D8, D9, D10, D11, D12, D13, D14,  
D15, D16, D17, D18, D19 & D20  
Section 18, T2S, R96W, 6th P.M.



SURVEYED BY: S.V.	DATE SURVEYED: 09-19-09
DRAWN BY: R.V.C.	DATE DRAWN: 10-12-09
SCALE: 1" = 100'	REVISED: F.T.M. 12-17-09

Tri State  
Land Surveying, Inc.  
180 NORTH VERNAL AVE. VERNAL, UTAH 84078

(435) 781-2501

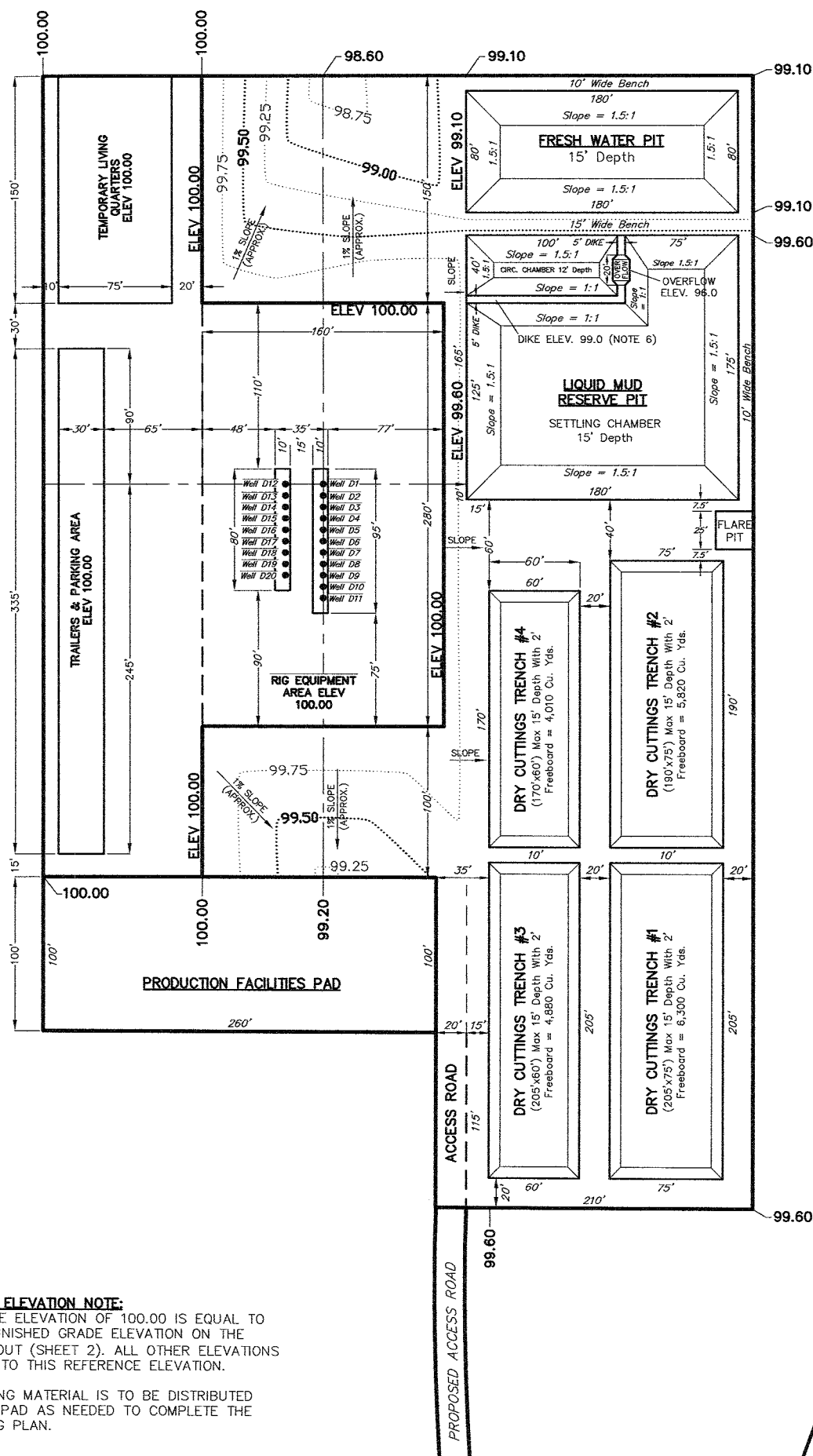
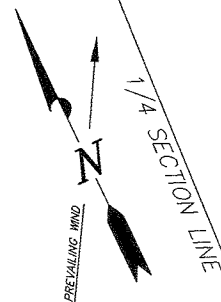
SHEET  
4

EXISTING PIPELINE R-O-W  
CO. RD. 76



ExxonMobil Oil Corporation  
**TYPICAL FINISH GRADING PLAN**  
WELL PAD (PICEANCE CREEK UNIT 296-18D)  
PICEANCE CREEK UNIT 296-18D1, D2, D3, D4,  
D5, D6, D7, D8, D9, D10, D11, D12, D13, D14,  
D15, D16, D17, D18, D19 & D20  
Section 18, T2S, R96W, 6th P.M.

FIGURE #4



**CONTOUR AND ELEVATION NOTE:**

THE REFERENCE ELEVATION OF 100.00 IS EQUAL TO THE ACTUAL FINISHED GRADE ELEVATION ON THE LOCATION LAYOUT (SHEET 2). ALL OTHER ELEVATIONS ARE RELATIVE TO THIS REFERENCE ELEVATION.

\* FINAL GRADING MATERIAL IS TO BE DISTRIBUTED ACCROSS THE PAD AS NEEDED TO COMPLETE THE FINISH GRADING PLAN.

**Notes**

1. Indicated row spacing for H&P "Flex 3" Drill Rig. H&P "Flex 4" will require 10'-0".
2. Rig Substructure Area to be level. Compaction and testing per wellpad construction specification.
3. Perimeter ditching not shown. Grading plan to be coordinated with approved Individual Storm Water Management Plan for each site.
4. Cuttings Trench #1 to be constructed with wellpad. Additional trenches (#2 & #3) will be constructed during drilling operations as required.
5. Indicated spacing may be increased to 75' based upon site topography. Alternate access location may be selected based upon site topography and direction of primary (existing) access.
6. Excavate Reserve Pit to initial 12' depth. Construct diversion dike with 3.0' additional excavation from settling chamber.

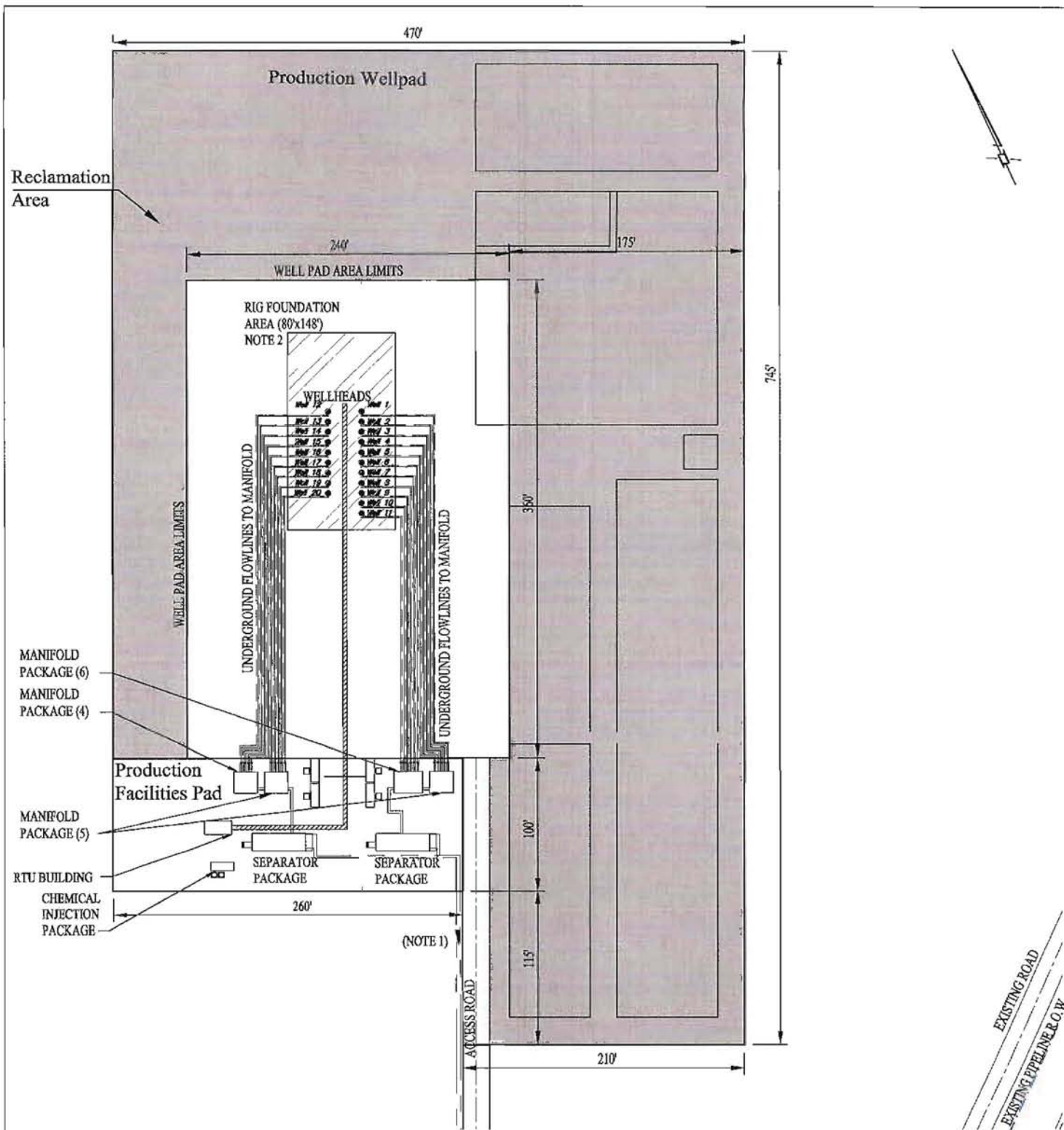
SURVEYED BY: S.V.	DATE SURVEYED: 09-19-09
DRAWN BY: R.V.C.	DATE DRAWN: 10-12-09
SCALE: 1" = 100'	REVISED: F.T.M. 12-17-09

**Tri State**  
Land Surveying, Inc.  
180 NORTH VERNAL AVE. VERNAL, UTAH 84078  
(435) 781-2501

SHEET  
5

EXISTING PIPELINE R.O.W.  
CO. RD. 76

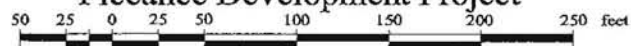




### NOTES:

1. Gas and Produced Water Flowline to Tie-in to associated trunklines.  
Reference PCU 296-18D- Topo 'D'.
2. Multiple flowline trenches to be installed outside of the indicated Rig Foundation Area.

### Production Facilities Plot Plan PCU 296-18D Piceance Development Project



Scale = 1" : 100'

**EXXONMOBIL**

Drawn by: CEL Checked by: CEL

Date: Nov. 25, 2009 Scale: 1"=100'

Dwg No. WP296-18D-09-001

P	25 Nov 09	Preliminary	CEL	CEL	WFD
REV.	DATE	REVISION DESCRIPTION	DRAWN	CHECKED	APPROVED



## Center Stake

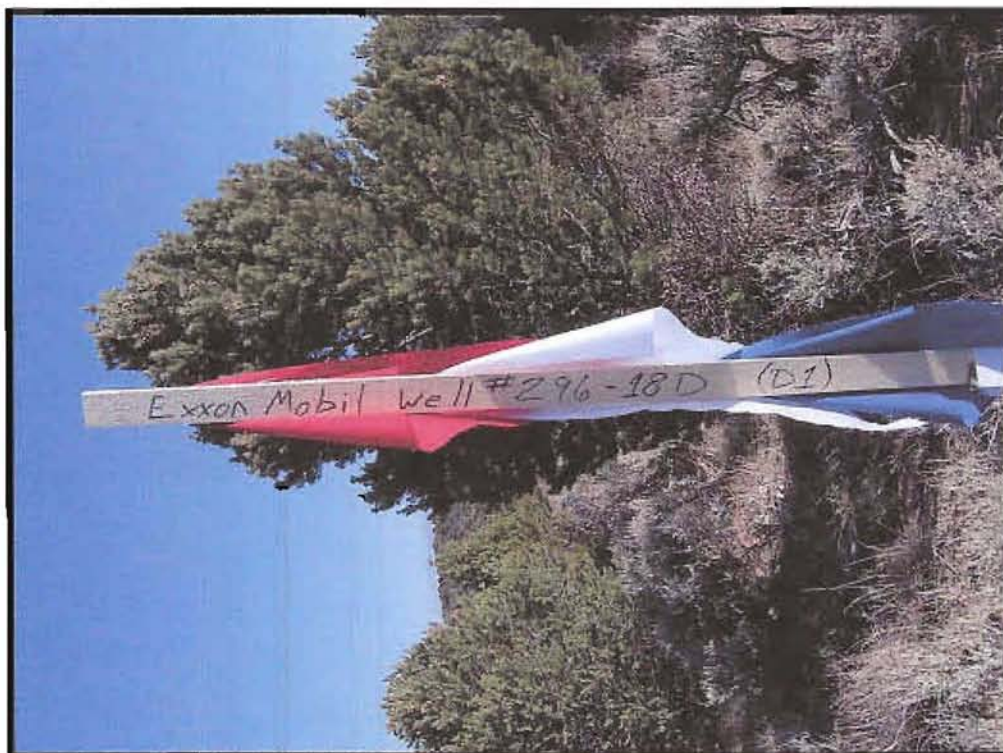
Date Photographed: 10/26/2009

Photographed By: D. Petty

NAD 83 - Decimal Degrees

Latitude : 39.881743

Longitude : 108.210813



## Access

Date Photographed: 10/26/2009

Photographed By: D. Petty

NAD 83 - Decimal Degrees

Latitude : 39.879082

Longitude : 108.211129



**ExxonMobil Oil Corporation**

**Piceance Creek Unit 296-18D  
SEC. 18, T2S, R96W, 6th P.M.**

*Tri-State  
Land Surveying Inc.*  
(435) 781-2501  
180 North Vernal Ave., Vernal, Utah 84078

DRAWN BY: JAS

DATE: 12/16/2009

Location

**Rio Blanco County,  
Colorado**

COLOR  
PHOTOGRAPHS

SHEET

**P1**



## Northerly

Date Photographed: 10/26/2009

Photographed By: D. Petty

NAD 83 - Decimal Degrees

Latitude : 39.881664

Longitude : 108.210802



## Easterly

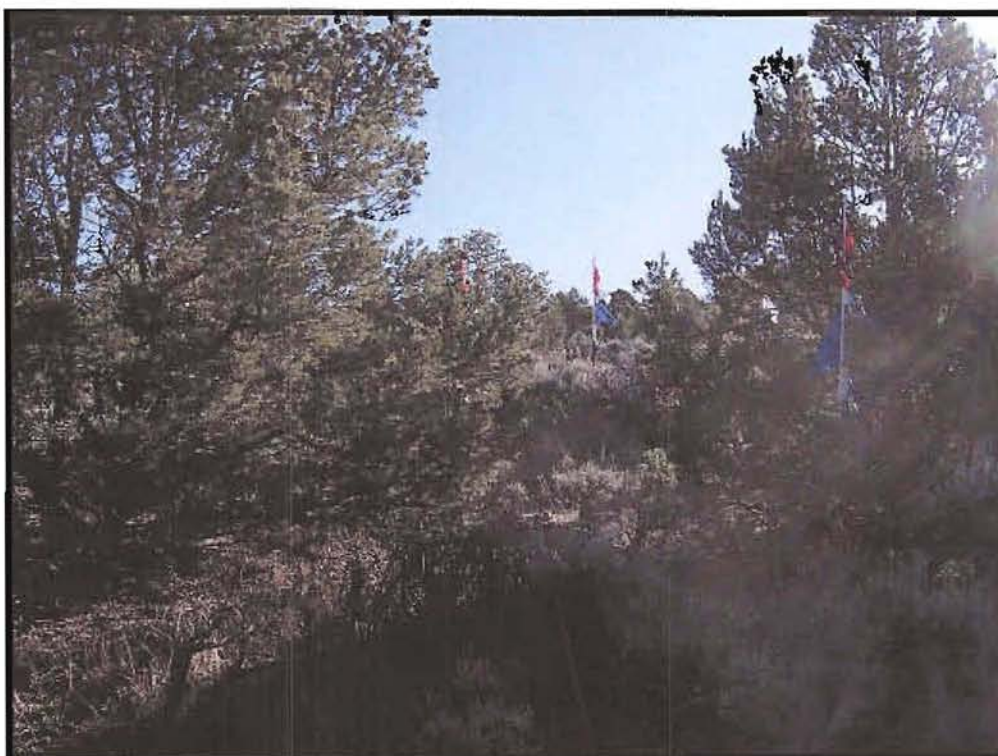
Date Photographed: 10/26/2009

Photographed By: D. Petty

NAD 83 - Decimal Degrees

Latitude : 39.881741

Longitude : 108.210997



**ExxonMobil Oil Corporation**

**Piceance Creek Unit 296-18D  
SEC. 18, T2S, R96W, 6th P.M.**

*Tri-State  
Land Surveying Inc.*  
(435) 781-2501  
180 North Vernal Ave. Vernal, Utah 84078

DRAWN BY: JAS  
DATE: 12/16/2009

Location

**Rio Blanco County,  
Colorado**

COLOR  
PHOTOGRAPHS

SHEET

**P2**



## Southerly

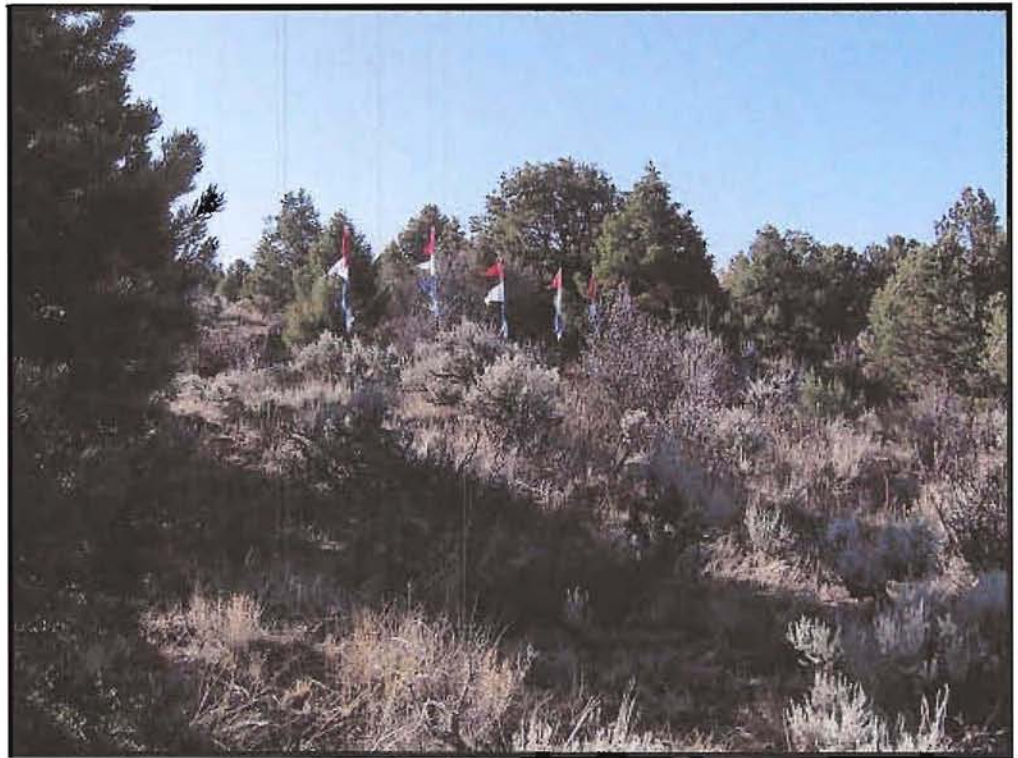
Date Photographed: 10/26/2009

Photographed By: D. Petty

NAD 83 - Decimal Degrees

Latitude : 39.881867

Longitude : 108.210823



## Westerly

Date Photographed: 10/26/2009

Photographed By: D. Petty

NAD 83 - Decimal Degrees

Latitude : 39.88175

Longitude : 108.210668



**ExxonMobil Oil Corporation**

**Piceance Creek Unit 296-18D  
SEC. 18, T2S, R96W, 6th P.M.**

*Tri-State  
Land Surveying Inc.*  
(435) 781-2501  
180 North Vernal Ave. Vernal, Utah 84078

DRAWN BY: JAS  
DATE: 12/16/2009

Location

**Rio Blanco County,  
Colorado**

COLOR  
PHOTOGRAPHS

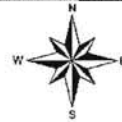
SHEET

**P3**



**NOTES:**

1. Locations of well pad, pipelines, and access road based on information from Tri-State Land Surveying Inc. (10/13/2009, Revised 1/11/2010).
2. Construction limits contain BMPs and stockpiles. Estimated disturbance including BMPs is 2.0 acres for the pipelines, 0.5 acre for the access road, and 14.0 acres for the well pad. Total disturbance is 16.5 acres.
3. BMP symbols used on this drawing are conceptual and are intended to indicate a specific type of BMP. They do not represent the actual size and/or shape of the BMP. Refer to Appendix F of the USWMP for guidance on BMP spacing.
4. There are no known springs or wetlands in close proximity to the site.
5. Wattles will be installed on the downgradient side of the stockpiles or at the downgradient perimeter.



1 INCH = 300 FEET

0 150 300 600 Feet

Approximate Construction Limits

See Figure 3 for  
PCU 296-18D  
Well Pad BMPs

Drainages to  
Hatch Gulch

Approximate  
Topsoil  
Location

County Road 76

Proposed Gas & Water Line  
(Approx. 1,320 ft)

Proposed Access Road  
(Approx. 520 ft)

Proposed PWDD Line  
(Approx. 1,700 ft)

**Legend**

- Flow Direction
- Wattle
- Culvert (18" CMP)
- Rip Rap
- Proposed Gas & Water Line
- Proposed PWDD Line
- Proposed Access Road
- PCU 296-18D Well Pad
- Approximate Construction Limits
- Fragile Soils  
(Source: BLM w/ Disclaimer)

1/25/10 GIS; Z:\Project Files\72-99\801-111\801-111.412\CAD-GIS\GIS\Task 069\Figure\_2.mxd

Base Map: LIDAR 2007



WRIGHT WATER ENGINEERS, INC.  
2490 W 26TH AVE 100A  
DENVER, CO. 80211  
(303) 480-1700

RIO BLANCO COUNTY, COLORADO  
**EXXON MOBIL CORPORATION**  
**PCU 296-18D**

APPROXIMATE CONSTRUCTION LIMITS,  
SOIL DISTURBANCE, & BMP MAP  
SECTIONS 18, TOWNSHIP 2S, RANGE 96W, 6TH P.M.

PROJECT NO.  
801-111.412  
TASK 69

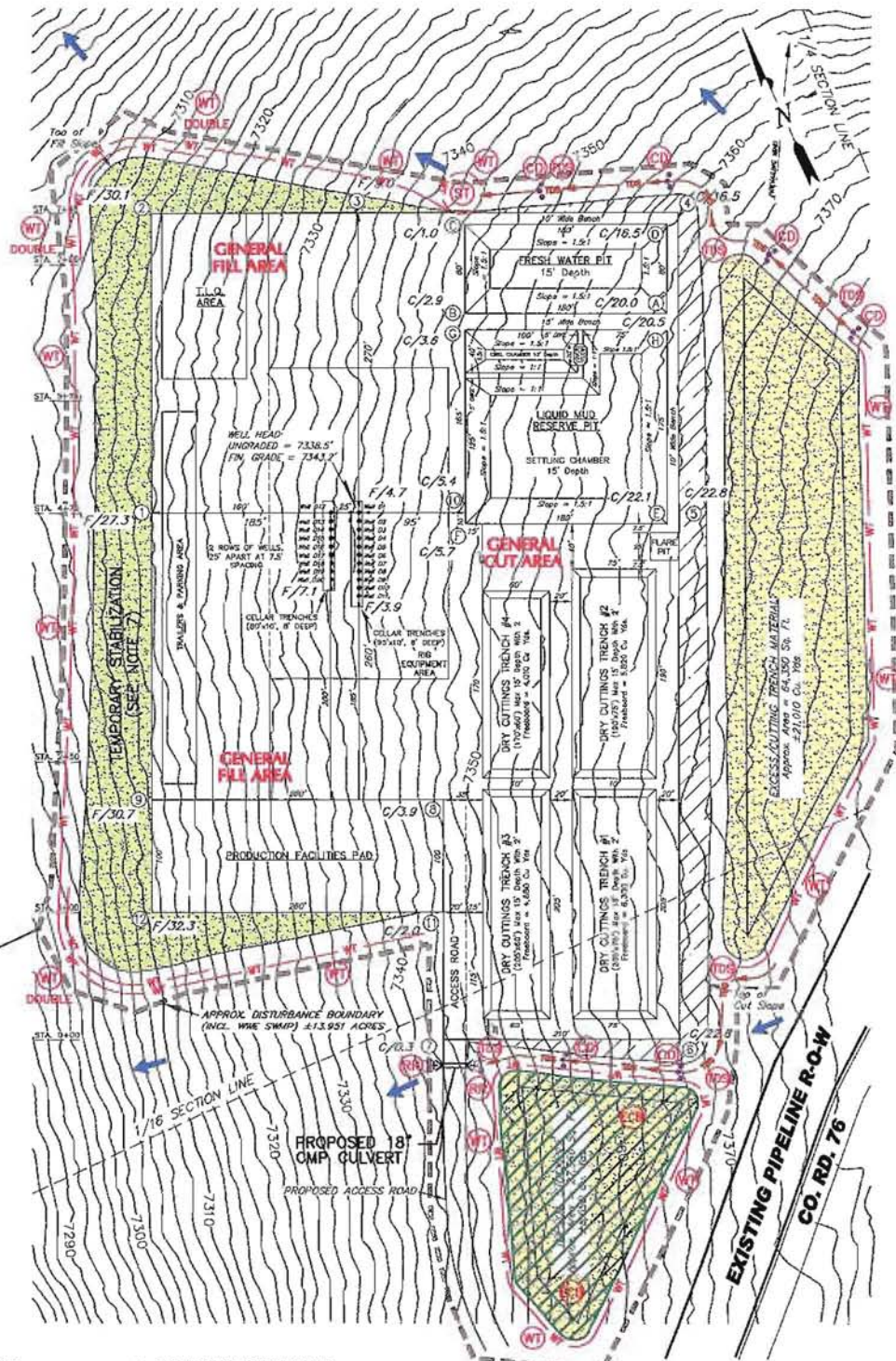
FIGURE  
2



## LEGEND

- CHECK DAM
- RIP RAP
- DRAINAGE DITCH
- TEMPORARY DRAINAGE SWALE
- SEDIMENT TRAP
- SURFACE ROUGHENING
- WATTLE
- BERM
- STOCKPILE MANAGEMENT
- TEMPORARY STABILIZATION (SEE NOTE 7)
- EROSION CONTROL BLANKET AND TEMPORARY SEEDING
- CULVERT
- FLOW DIRECTION
- APPROXIMATE CONSTRUCTION LIMITS FOR THE WELL PAD

APPROXIMATE LIMITS OF CONSTRUCTION/DISTURBANCE 13.95 ACRES



## NOTES

1. LOCATIONS OF WELL PAD FEATURES ARE BASED ON SURVEY INFORMATION FROM TRI STATE LAND SURVEYING, INC. (01/19/10).
2. CUT MATERIAL IS RE-USED AS FILL MATERIAL OR WASTED ON SITE.
3. BMP SYMBOLS USED ON DRAWING ARE CONCEPTUAL AND ARE INTENDED TO INDICATE A SPECIFIC TYPE OF BMP. THEY DO NOT REPRESENT THE ACTUAL SIZE AND OR SHAPE OF THE BMP. REFER TO APPENDIX F OF THE USWMP FOR GUIDANCE ON BMP SPACING.

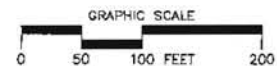
4. CONTOURS REPRESENT PRE-CONSTRUCTION ELEVATIONS.

5. WELL PAD WILL BE CONSTRUCTED TO BE RELATIVELY FLAT WITH SIDE SLOPES. SIDE SLOPES ARE INDICATED BY FILL AND CUT ELEVATIONS.

6. THERE ARE NO KNOWN WETLANDS, SPRINGS OR OTHER SURFACE WATERS IN CLOSE PROXIMITY TO THIS SITE.

7. REQUIREMENTS FOR TEMPORARY STABILIZATION WILL BE DETERMINED IN THE FIELD. IT WILL BE BASED PRIMARILY ON ROCK CONTENT AND SLOPE.

8. PERIMETER BMPs WILL BE PLACED AS CLOSE TO THE TOE OF THE SLOPE AS FEASIBLE WHILE MAINTAINING ADEQUATE ROOM FOR OPERATION OF CONSTRUCTION EQUIPMENT BETWEEN THE TOE OF SLOPE AND THE PERIMETER BMP.



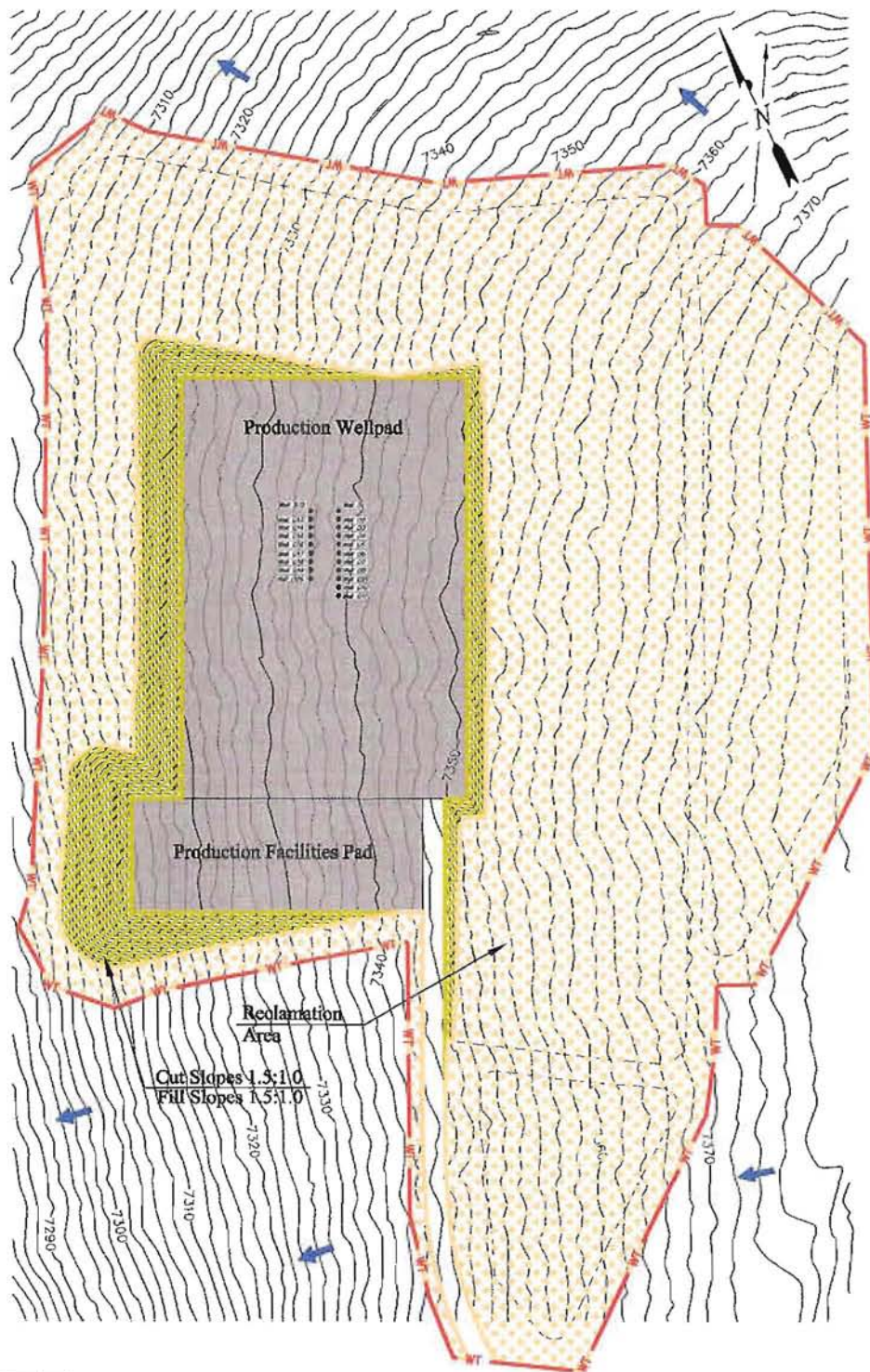


### Estimated 'Disturbed' Area

Original Wellpad Facilities Area:  
14.0 Acres

Interim Production Wellpad and  
Facilities Area:  
2.9 Acres

Reclaimed Area (Interim):  
11.1 Acres



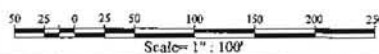
### BMP LEGEND



NOTES:

1. Reference Tri State Land Surveying Inc. grading plan dated 01-19-10.
2. Reclaimed area to be regraded to achieve approximate original contours.  
Original contours are shown for reference.
3. Perimeter BMP's (e.g. wattles) will remain in place as needed until final stabilization is achieved.
4. If field conditions dictate Hydromulch will be used. If Hydromulch used, seed will be applied first (at double the seed rate) then the Hydromulch will be applied

SOURCE: EXXONMOBIL  
PCU 296-18D - Interim Reclamation Plan  
Date: Dec. 17, 2009



EXXON MOBIL CORPORATION  
SECTION 18, TOWNSHIP 2S, RANGE 96W  
PCU 296-18D  
INTERIM RECLAMATION PLAN

REVISION:			FIGURE
-	-	-	5