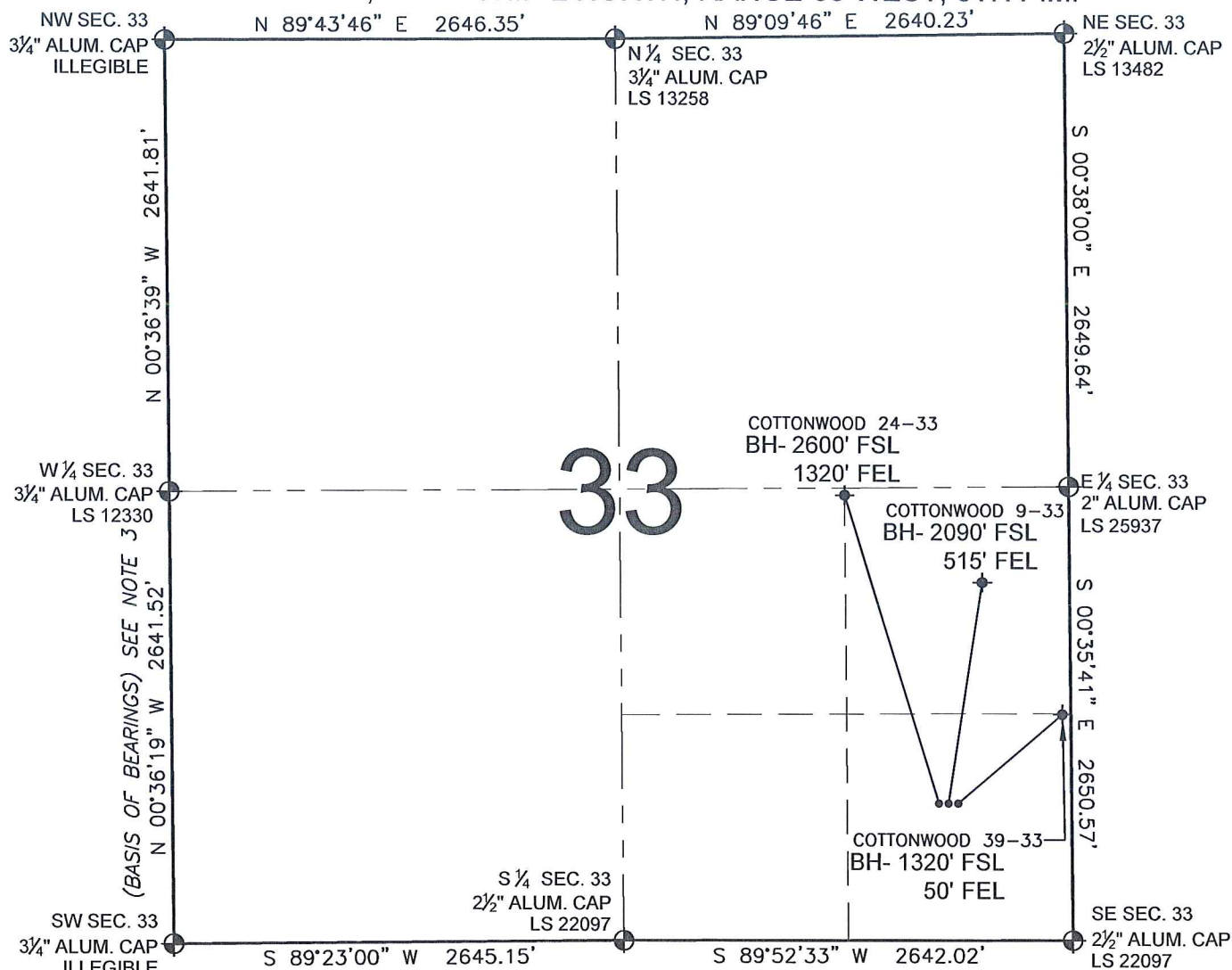


# PAD DRAWING - COTTONWOOD 3 PAD

SECTION 33, TOWNSHIP 2 NORTH, RANGE 66 WEST, 6TH P.M.



## LEGEND

- ⊕ = EXISTING MONUMENT    ⊕ = BOTTOM HOLE    BH= BOTTOM HOLE  
 ● = PROPOSED WELL    ◆ = EXISTING WELL

## NOTES:

- THIS SURVEY WAS DONE BY GPS METHODS AND CONFORMS TO THE MINIMUM STANDARDS SET BY THE C.O.G.C.C., RULE NO. 215
- ELEVATIONS SHOWN AT THE WELL HEAD, AS WELL AS HORIZONTAL CONTROL, ARE BASED ON GPS-RTK VALUES DERIVED FROM DOING 2-HOUR STATIC GPS SESSIONS AND REDUCTIONS USING O.P.U.S. SOLUTIONS.  
VERTICAL = NAVD88; HORIZONTAL = NAD83/92
- THE BEARINGS SHOWN HEREON ARE BASED ON GPS OBSERVATIONS BETWEEN THE MONUMENTS SHOWN HEREON AS FOUND ON THE FIELD DATE BELOW.
- DISTANCES SHOWN ARE AT GROUND LEVEL, AS MEASURED IN THE FIELD, WITH TIES TO WELLS MEASURED AT A PERPENDICULAR TO SECTION LINES.

## NOTES:

- COTTONWOOD 39-33 TO BE AT 800' FSL, 709' FEL.  
 BOTTOM HOLE AT 1320' FSL & 50' FEL.  
 COTTONWOOD 9-33 TO BE AT 800' FSL, 725' FEL.  
 BOTTOM HOLE AT 2090' FSL & 515' FEL.  
 COTTONWOOD 24-33 TO BE AT 799' FSL, 741' FEL.  
 BOTTOM HOLE AT 2600' FSL & 1320' FEL.



0 500 1000

SCALE: 1"=1000'

## REVISIONS

INITIAL	DATE
SMF	02-08-10

PREPARED BY:

**PFS**

Petroleum Field Services, LLC  
1801 W. 13th Ave.  
Denver, CO 80204



KERR-MCGEE OIL & GAS ONSHORE LP

FIELD DATE:  
01-15-10

DRAWING DATE:  
01-19-10

BY:  
SMF

PAD NAME:  
COTTONWOOD 3 PAD

SURFACE LOCATION:

WELD COUNTY, COLORADO  
SE 1/4 SE 1/4, SEC. 33, T2N, R66W