

W 1/4 Cor. Sec. 16  
1917 Brass Cap  
1.5' High, Steel  
Post  
Lat: 39.522985  
Long: 108.234115

T6S, R97W, 6th P.M.

# BERRY PETROLEUM COMPANY

Well location, OXY 21-6D, located as shown in the NE 1/4 SE 1/4 of Section 21, T6S, R97W, 6th P.M., Garfield County, Colorado.

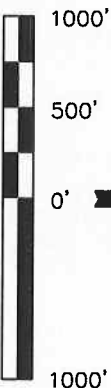
## BASIS OF ELEVATION

SPOT ELEVATION AT THE NORTHWEST CORNER OF SECTION 30, T5S, R95W, 6th P.M. TAKEN FROM THE FORKED GULCH QUADRANGLE, COLORADO, GARFIELD COUNTY, 7.5 MINUTE SERIES (TOPOGRAPHICAL MAP) PUBLISHED BY THE UNITED STATES DEPARTMENT OF THE INTERIOR, GEOLOGICAL SURVEY. SAID ELEVATION IS MARKED AS BEING 5966 FEET.

## BASIS OF BEARINGS

BASIS OF BEARINGS IS A G.P.S. OBSERVATION.

Sheet 1 of 12



## CERTIFICATE

THIS IS TO CERTIFY THAT THE ABOVE PLAT WAS PREPARED AND LOCATION AS SHOWN WAS STAKED ON THE GROUND FROM FIELD NOTES OF ACTUAL SURVEYS MADE BY ME OR UNDER MY SUPERVISION AND THAT THE SAME ARE TRUE AND CORRECT TO THE BEST OF MY KNOWLEDGE AND BELIEF.

REGISTERED LAND SURVEYOR  
REGISTRATION NO. 17442  
STATE OF COLORADO

UNTAH ENGINEERING & LAND SURVEYING  
85 SOUTH 200 EAST - VERNAL, UTAH 84078  
(435) 789-1017

SCALE  
1" = 1000'

DATE SURVEYED: 01-29-07 DATE DRAWN: 03-07-08

PARTY

B.J. B.H. D.R.B.

REFERENCES

G.L.O. PLAT

FILE

WEATHER

COLD

BERRY PETROLEUM COMPANY

PDOP = 3.7

NAD 83 (SURFACE LOCATION)

Latitude = 39.5022.56" (39.506211)

Longitude = 108.1302.25" (108.217286)

NAD 27 (TARGET BOTTOM HOLE)

Latitude = 39.5022.56" (39.506211)

Longitude = 108.1302.25" (108.217286)

NAD 27 (SURFACE LOCATION)

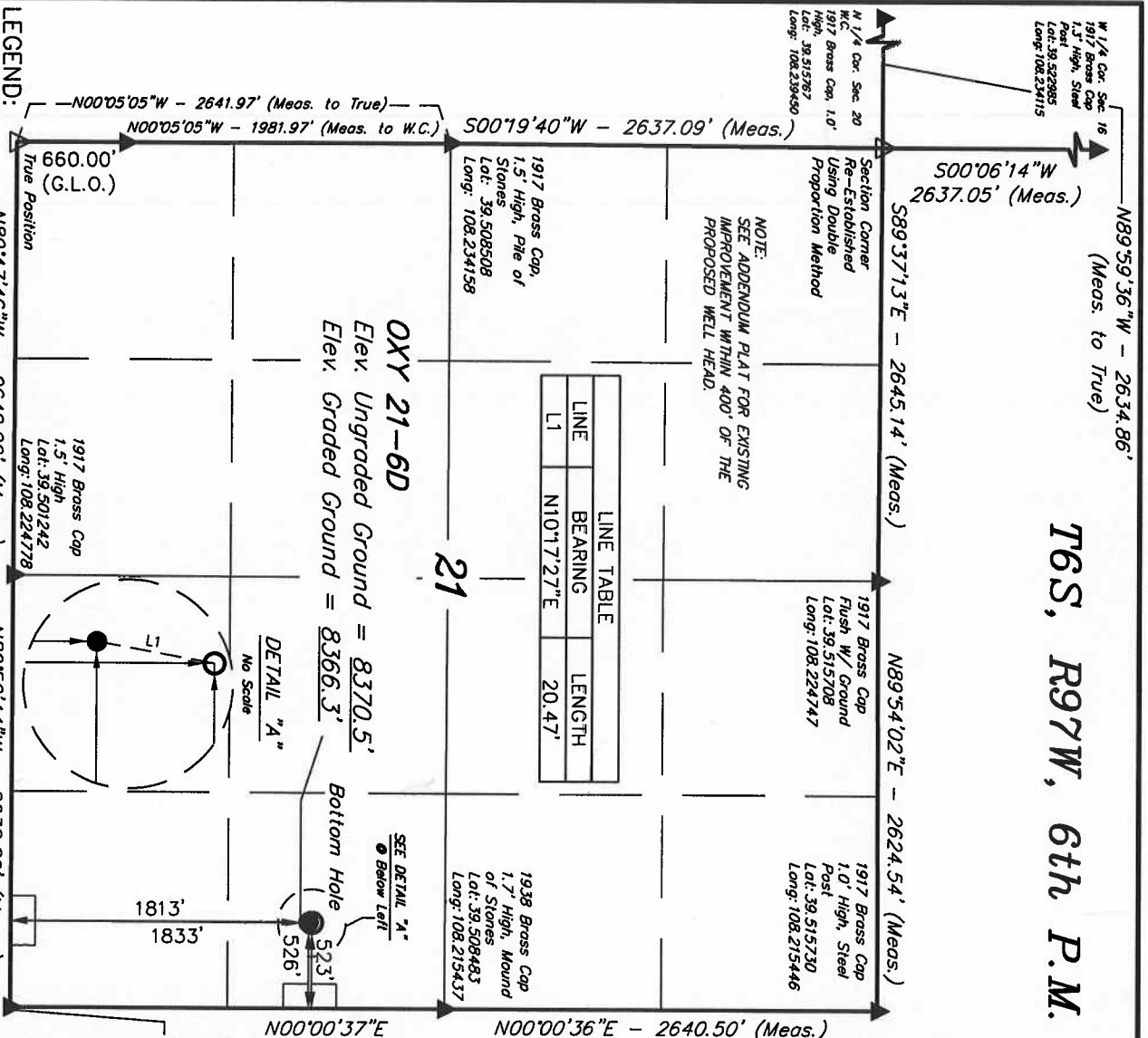
Latitude = 39.5022.56" (39.506211)

Longitude = 108.1302.25" (108.217286)

NAD 83 (TARGET BOTTOM HOLE)

Latitude = 39.5022.56" (39.506211)

Longitude = 108.1302.25" (108.217286)



LINE TABLE		
LINE	BEARING	LENGTH
L1	N10°17'27"E	20.47'

OXY 21-6D

Elev. Ungraded Ground = 8370.5'

Elev. Graded Ground = 8366.3'

DETAIL "A"

No Scale

SEE DETAIL "A"

Below Left

523'

526'

1813'

1833'

1917 Brass Cap

1.5' High

Lat: 39.501242

Long: 108.224778

1917 Brass Cap

1.5' High

Lat: 39.501242

Long: 108.224778

1917 Brass Cap

1.5' High

Lat: 39.501242

Long: 108.224778