

T6S, R97W, 6th P.M.

**BERRY PETROLEUM COMPANY**

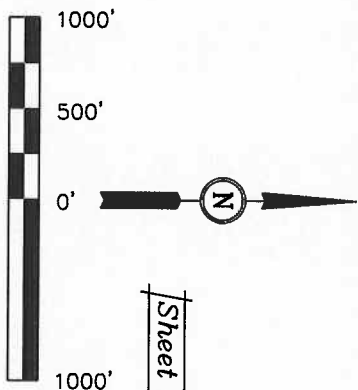
Well location, OXY 21-2D, located as shown in the NE 1/4 SE 1/4 of Section 21, T6S, R97W, 6th P.M., Garfield County, Colorado.

## BASIS OF ELEVATION

SPOT ELEVATION AT THE NORTHWEST CORNER OF SECTION 30, T5S, R95W, 6th P.M. TAKEN FROM THE FORKED GULCH QUADRANGLE, COLORADO, GARFIELD COUNTY, 7.5 MINUTE SERIES (TOPOGRAPHICAL MAP) PUBLISHED BY THE UNITED STATES DEPARTMENT OF THE INTERIOR, GEOLOGICAL SURVEY. SAID ELEVATION IS MARKED AS BEING 5966 FEET.

## BASIS OF BEARINGS

BASIS OF BEARINGS IS A G.P.S. OBSERVATION.



Sheet 1b of 12

## CERTIFICATE

THIS IS TO CERTIFY THAT THE ABOVE PLAT WAS PREPARED AND LOCATION AS SHOWN WAS STAKED ON THE GROUND FROM FIELD NOTES OF ACTUAL SURVEYS MADE BY ME OR UNDER MY SUPERVISION AND THAT THE SAME ARE TRUE AND CORRECT TO THE BEST OF MY KNOWLEDGE AND BELIEF.

Long: 108.215428  
REVISED: 10-23-09 C.H.  
REVISED: 09-14-09 C.H.  
REVISED: 08-18-09 C.H.

REGISTERED LAND SURVEYOR  
REGISTRATION NO. 17492  
STATE OF COLORADO

N89°47'46"W - 2640.99' (Meas.)

N89°52'44"W - 2638.89' (Meas.)

**= 90° SYMBOL**

= PROPOSED WELL HEAD.

= SECTION CORNERS LOCATED

**Δ = SECTION CORNERS RE-ESTABLISHED,**

MAD 83 (TARGET BOTTOM HOLE)		MAD 83 (SURFACE LOCATION)	
LATITUDE = 39.503 09.61° (39.502689)		LATITUDE = 39.502 12.24° (39.506178)	
LONGITUDE = 108.813 02.29° (108.217303)		LONGITUDE = 108.513 02.11° (108.217269)	
MAD 27 (TARGET BOTTOM HOLE)		MAD 27 (SURFACE LOCATION)	
LATITUDE = 39.502 09.69° (39.502692)		LATITUDE = 39.502 12.35° (39.506230)	
LONGITUDE = 108.813 00.00° (108.216666)		LONGITUDE = 108.512 59.88° (108.216633)	

SCALE

DATE SURVEYED:

**DATE DRAWN:**

[illegible]

1000

---

## REFERENCES

L

COLD

**BE**

COMPANY