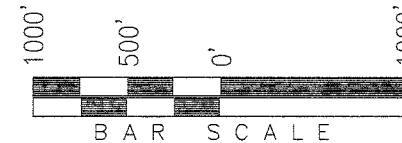


**T2S, R96W, 6th P.M.**

**ExxonMobil Oil Corporation**

WELL LOCATION, PICEANCE CREEK UNIT  
296-18D20, LOCATED AS SHOWN IN THE NE 1/4  
NW 1/4 (LOT 7) OF SECTION 18, T2S, R96W,  
6th P.M. RIO BLANCO COUNTY, COLORADO.



◆ = SECTION CORNERS LOCATED

**BASIS OF BEARINGS & BASIS OF ELEVATION**

BASIS OF BEARINGS IS A LINE BETWEEN MAGNOLIA & MEYERS TRIANGULATION STATION GRID COORDINATES WHICH IS ASSUMED TO BEAR S82°36'07"E.

BASIS OF ELEVATIONS IS MAGNOLIA TRIANGULATION STATION LOCATED IN THE NW 1/4 OF SECTION 9, T2S, R96W, 6th P.M. REPORTED FROM THE NATIONAL GEODETIC SURVEY AS BEING 7529 FEET (NAVD 88). WE MEASURED IT TO BE 7526.2'

**NOTES:**

1. Well footages are measured at right angles to the Section Lines.
2. Bearings are based on Global Positioning Satellite observations.
3. G.P.S. Operator: S. VERNON, (PDOP) = 1.3

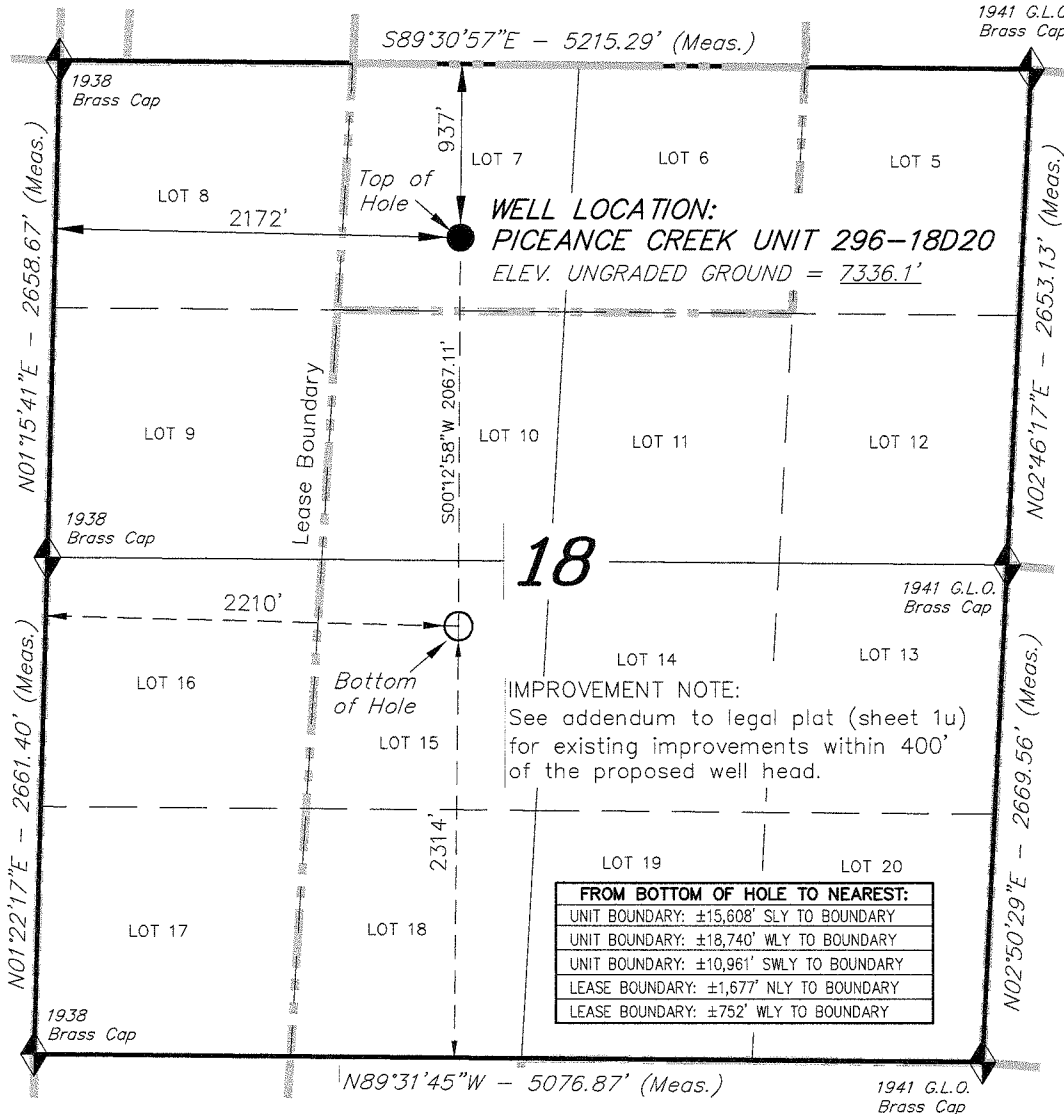
THIS IS TO CERTIFY THAT THE ABOVE PLAT WAS PREPARED FROM FIELD NOTES OF ACTUAL SURVEYS MADE BY ME OR UNDER MY SUPERVISION, THE LOCATION HAS BEEN SPOKE ON THE GROUND AS SHOWN ON THE PLAT, AND THAT THE SAME ARE TRUE AND CORRECT TO THE BEST OF MY KNOWLEDGE AND BELIEF.

*[Signature]*  
REGISTERED LAND SURVEYOR  
REGISTRATION NO. 1138  
STATE OF COLORADO

**TRI STATE LAND SURVEYING & CONSULTING**

180 NORTH VERNAL AVE. - VERNAL, UTAH 84078  
(435) 781-2501

DATE SURVEYED: 09-19-09	SURVEYED BY: S.V.	<b>SHEET</b> <b>1t</b>
DATE DRAWN: 12-11-09	DRAWN BY: F.T.M.	
REVISED:	SCALE: 1" = 1000'	



**WELL LOCATION:**  
PICEANCE CREEK UNIT 296-18D20  
ELEV. UNGRADED GROUND = 7336.1'

**IMPROVEMENT NOTE:**  
See addendum to legal plat (sheet 1u)  
for existing improvements within 400'  
of the proposed well head.

**FROM BOTTOM OF HOLE TO NEAREST:**

UNIT BOUNDARY: ±15,608' SLY TO BOUNDARY
UNIT BOUNDARY: ±18,740' WLY TO BOUNDARY
UNIT BOUNDARY: ±10,961' SWLY TO BOUNDARY
LEASE BOUNDARY: ±1,677' NLY TO BOUNDARY
LEASE BOUNDARY: ±752' WLY TO BOUNDARY

CO-NORTH NAD 83 (SURFACE LOCATION)	CO-NORTH NAD 83 (BOTTOM HOLE)	FROM SURFACE LOCATION TO NEAREST:
LATITUDE = 39°52'53.87" (39.881630)	LATITUDE = 39°52'33.45" (39.875960)	TOWN/COMMUNITY: 19.1 MILES NE TO MEEKER
LONGITUDE = 108°12'39.51" (108.210974)	LONGITUDE = 108°12'38.80" (108.210777)	UNIT BOUNDARY: ±17,674' SLY TO BOUNDARY
STATE PLANE COORDINATES	STATE PLANE COORDINATES	UNIT BOUNDARY: ±18,636' WLY TO BOUNDARY
N: = 1211356.715 E: = 2239311.104	N: = 1209290.352 E: = 2239303.314	UNIT BOUNDARY: ±11,529' SWLY TO BOUNDARY
CO-NORTH NAD 27 (SURFACE LOCATION)	CO-NORTH NAD 27 (BOTTOM HOLE)	LEASE BOUNDARY: ±390' SLY TO BOUNDARY
LATITUDE = 39°52'53.97" (39.881657)	LATITUDE = 39°52'33.55" (39.875986)	LEASE BOUNDARY: ±634' WLY TO BOUNDARY
LONGITUDE = 108°12'37.20" (108.210335)	LONGITUDE = 108°12'36.49" (108.210137)	EXISTING WELL: ±2,096' NWLY TO T11-18G PCU
STATE PLANE COORDINATES	STATE PLANE COORDINATES	
N: = 211357.758 E: = 1239470.932	N: = 209291.411 E: = 1239463.149	