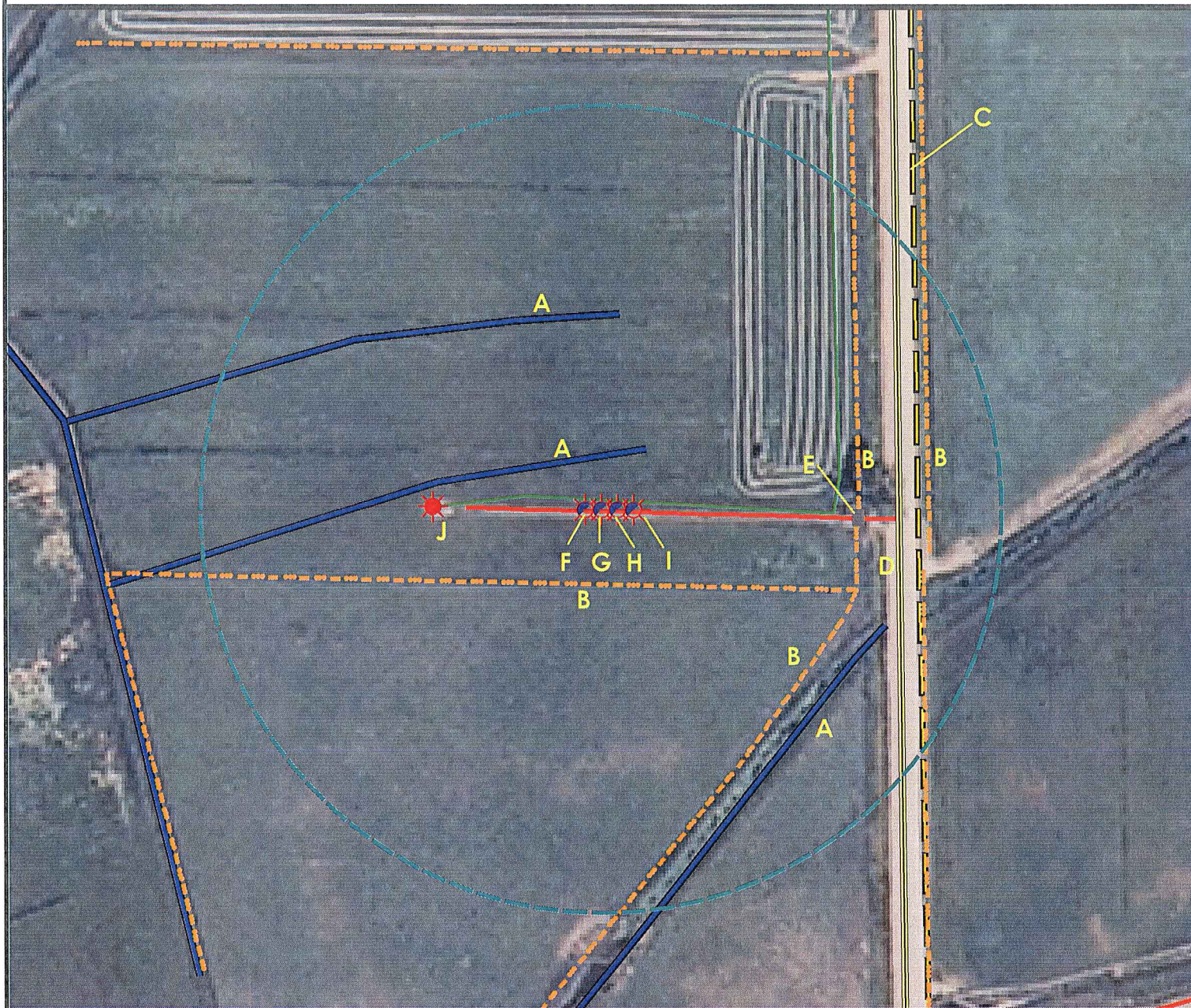
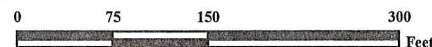


Location Drawing



A. Irrigation Ditches are 52' NW, 193' NW, and 289' SE.
 B. Fences are 70' S, 251' SE, 328' E and 256' E.
 C. Powerline is 314' E.
 D. Weld County Road 17 is 287' E.
 E. Cattle Guard is 272' E.

F. Proposed Well EVERIST 25-32.
 G. Proposed Well EVERIST 7-32.
 H. Proposed Well EVERIST 28-5.
 I. Proposed Well EVERIST 40-32.
 J. Existing Well HSR-NELSON 10-32 is 150' W.



Legend

- | | |
|----------------------|----------------------|
| Proposed Well | Building/Residence |
| Existing Well | Oil & Gas Equipment |
| Plugged Well | Water Body |
| Manhole | Utility Box |
| CattleGuard/Gate | Railroad |
| Bridge | Sewer |
| ECD | Fence |
| 400' Radius | Overhead Power Line |
| Facilities Enclosure | Pipeline |
| | Main Road |
| | Access Road |
| | Concrete Lined Ditch |
| | Ditch/Canal |

400ft Radius Map

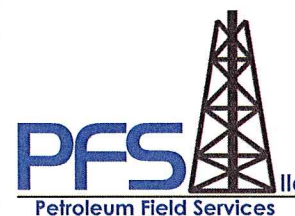
EVERIST 25-32 Pad Multi Well Pad

Surface Location: T3N R67W S32
 Description of surface uses : Grass Hay

Field Date: 10/06/2009
 Drawing Date: 3/1/2010
 Drafter: BHF
 Checked By: BHF

Aerial Photo supplied by NAIP - 2005

Prepared for:
**KERR-MCGEE OIL &
 GAS ONSHORE LP**



Use our resources to find yours!
www.petro-fs.com

1801 W. 13th Ave Suite 207
 Denver, CO 80204
 (303) 928-7128
 111 E. Third Street
 Rifle, CO 81650
 (970) 625-4740