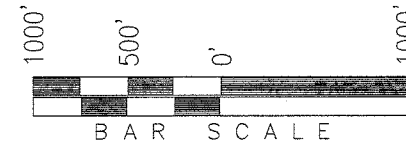


T2S, R96W, 6th P.M.

ExxonMobil Oil Corporation

WELL LOCATION, PICEANCE CREEK UNIT
296-18D19, LOCATED AS SHOWN IN THE NE 1/4
NW 1/4 (LOT 7) OF SECTION 18, T2S, R96W,
6th P.M. RIO BLANCO COUNTY, COLORADO.



◆ = SECTION CORNERS LOCATED

BASIS OF BEARINGS & BASIS OF ELEVATION

BASIS OF BEARINGS IS A LINE BETWEEN MAGNOLIA & MEYERS TRIANGULATION STATION GRID COORDINATES WHICH IS ASSUMED TO BEAR S82°36'07"E.

BASIS OF ELEVATIONS IS MAGNOLIA TRIANGULATION STATION LOCATED IN THE NW 1/4 OF SECTION 9, T2S, R96W, 6th P.M. REPORTED FROM THE NATIONAL GEODETIC SURVEY AS BEING 7529 FEET (NAVD 88). WE MEASURED IT TO BE 7526.2'

NOTES:

1. Well footages are measured at right angles to the Section Lines.
2. Bearings are based on Global Positioning Satellite observations.
3. G.P.S. Operator: S. VERNON, (PDOP) = 1.8

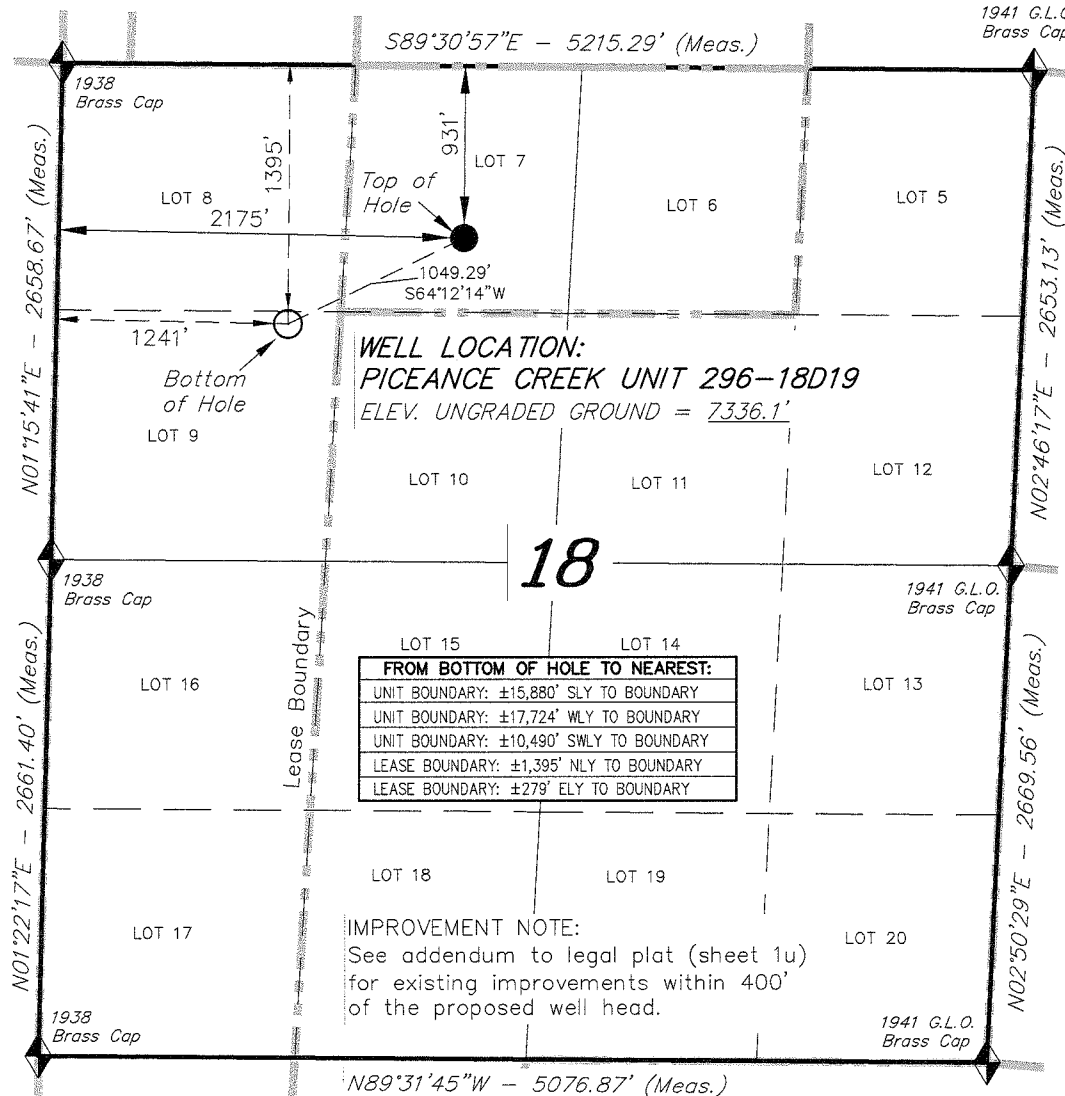
THIS IS TO CERTIFY THAT THE ABOVE PLAT WAS PREPARED FROM FIELD NOTES OF ACTUAL SURVEYS MADE BY ME OR UNDER MY SUPERVISION, THE LOCATION HAS BEEN MARKED ON THE GROUND AS SHOWN ON THE PLAT, AND THAT THE SAME ARE TRUE AND CORRECT TO THE BEST OF MY KNOWLEDGE AND BELIEF.

[Signature]
REGISTERED LAND SURVEYOR
REGISTRATION NO. 118012
STATE OF COLORADO

TRI STATE LAND SURVEYING & CONSULTING

180 NORTH VERNAL AVE. - VERNAL, UTAH 84078
(435) 781-2501

DATE SURVEYED: 09-19-09	SURVEYED BY: S.V.	SHEET 1s
DATE DRAWN: 12-11-09	DRAWN BY: F.T.M.	
REVISED:	SCALE: 1" = 1000'	



WELL LOCATION:
PICEANCE CREEK UNIT 296-18D19
ELEV. UNGRADED GROUND = 7336.1'

FROM BOTTOM OF HOLE TO NEAREST:	
UNIT BOUNDARY:	±15,880' SLY TO BOUNDARY
UNIT BOUNDARY:	±17,724' WLY TO BOUNDARY
UNIT BOUNDARY:	±10,490' SWLY TO BOUNDARY
LEASE BOUNDARY:	±1,395' NLY TO BOUNDARY
LEASE BOUNDARY:	±279' ELY TO BOUNDARY

IMPROVEMENT NOTE:
See addendum to legal plat (sheet 1u)
for existing improvements within 400'
of the proposed well head.

CO-NORTH NAD 83 (SURFACE LOCATION)		CO-NORTH NAD 83 (BOTTOM HOLE)		FROM SURFACE LOCATION TO NEAREST:	
LATITUDE = 39°52'53.94" (39.881649)	LONGITUDE = 108°12'39.47" (108.210964)	LATITUDE = 39°52'49.14" (39.880317)	LONGITUDE = 108°12'51.40" (108.214277)	TOWN/COMMUNITY: 19.1 MILES NE TO MEEKER	
STATE PLANE COORDINATES		STATE PLANE COORDINATES		UNIT BOUNDARY: ±17,681' SLY TO BOUNDARY	
N: = 1211363.486	E: = 2239314.324	N: = 1210907.027	E: = 2238369.928	UNIT BOUNDARY: ±18,639' WLY TO BOUNDARY	
CO-NORTH NAD 27 (SURFACE LOCATION)		CO-NORTH NAD 27 (BOTTOM HOLE)		UNIT BOUNDARY: ±11,535' SWLY TO BOUNDARY	
LATITUDE = 39°52'54.03" (39.881676)	LONGITUDE = 108°12'37.17" (108.210324)	LATITUDE = 39°52'49.24" (39.880344)	LONGITUDE = 108°12'49.09" (108.213637)	LEASE BOUNDARY: ±397' SLY TO BOUNDARY	
STATE PLANE COORDINATES		STATE PLANE COORDINATES		LEASE BOUNDARY: ±636' WLY TO BOUNDARY	
N: = 211364.529	E: = 1239474.152	N: = 210908.074	E: = 1238529.768	EXISTING WELL: ±2,098' NWLY TO T11-18G PCU	