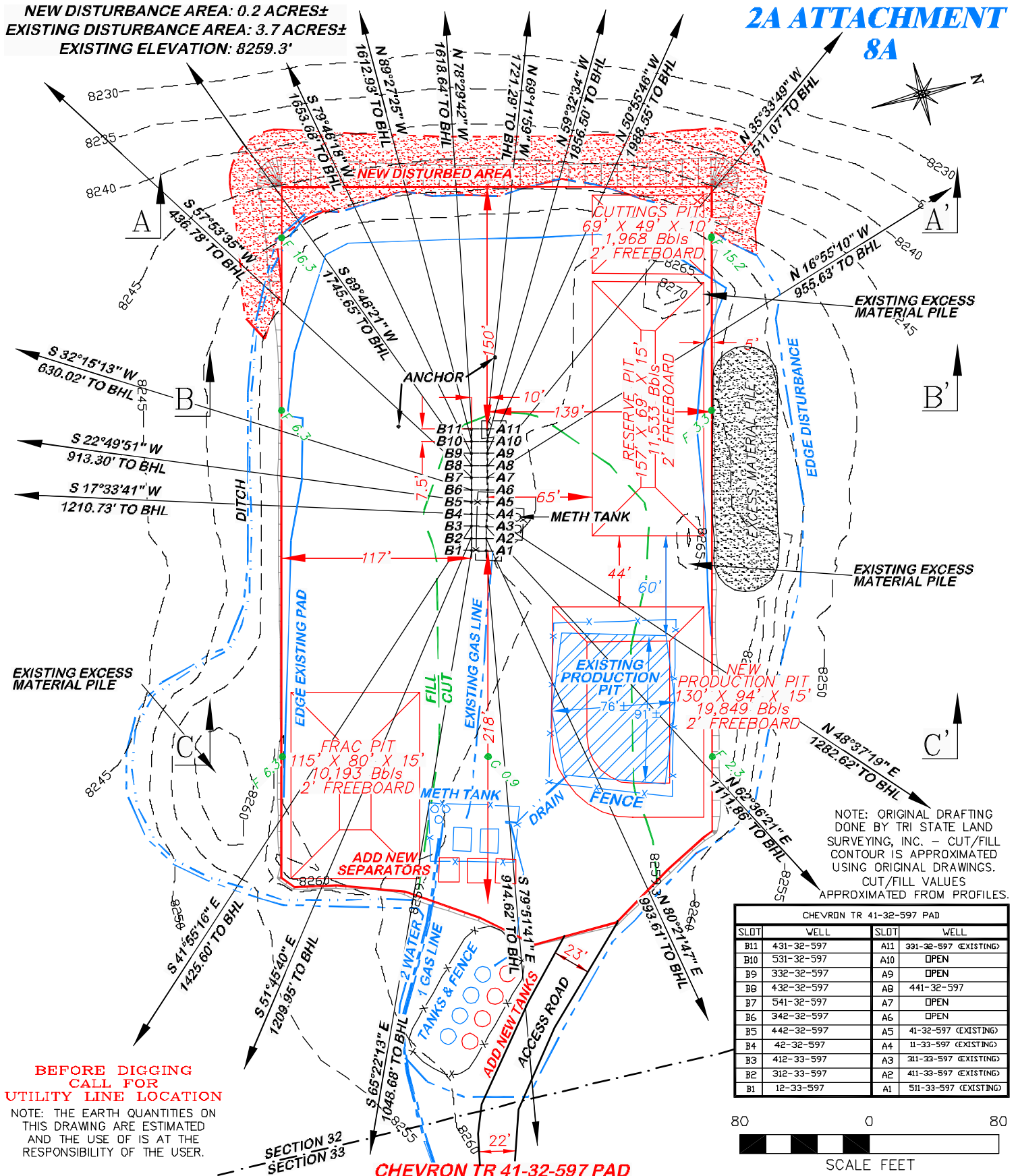


NEW DISTURBANCE AREA: 0.2 ACRES±
EXISTING DISTURBANCE AREA: 3.7 ACRES±
EXISTING ELEVATION: 8259.3'

2A ATTACHMENT

8A



BEFORE DIGGING
CALL FOR
UTILITY LINE LOCATION

NOTE: THE EARTH QUANTITIES ON
THIS DRAWING ARE ESTIMATED
AND THE USE OF IS AT THE
RESPONSIBILITY OF THE USER.

CHEVRON TR 41-32-597 PAD



RIFFIN & ASSOCIATES, INC.
1414 ELK ST., ROCK SPRINGS, WY 82901

(307) 362-5028

DRAWN: 12/07/05

SCALE: 1" = 80'

REVISED: 2/22/10 - MMM

DRG JOB No. 13206

REVISED WELLS

EXHIBIT 2 - SHEET 1 OF 2

CONSTRUCTION LAYOUT DRAWING 1 OF 3

WILLIAMS PRODUCTION RMT COMPANY

CHEVRON TR 41, 42, 331, 332, 342, 431, 432, 441, 442, 531, 541-32-597 &

11, 12, 311, 312, 411, 412, 511-33-597

NENE, SECTION 32, T5S, R97W, 6th P.M.

ESTIMATED EARTHWORK

ITEM	CUT	FILL	TOPSOIL	EXCESS
PAD	4763 CY	2169 CY	2179 CY	415 CY
PIT	4877 CY			4877 CY
TOTALS	9640 CY	2169 CY	2179 CY	5292 CY

8A

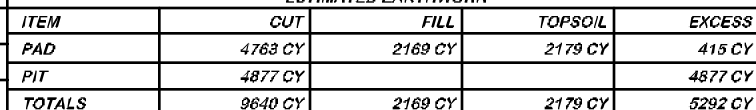
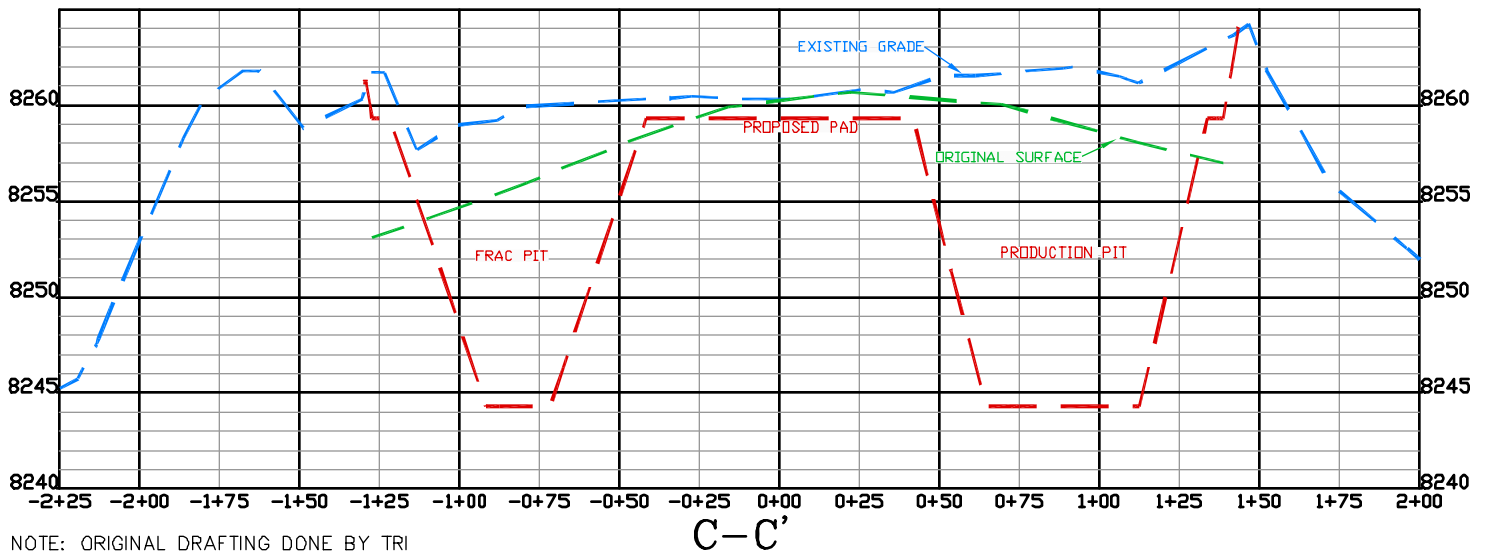
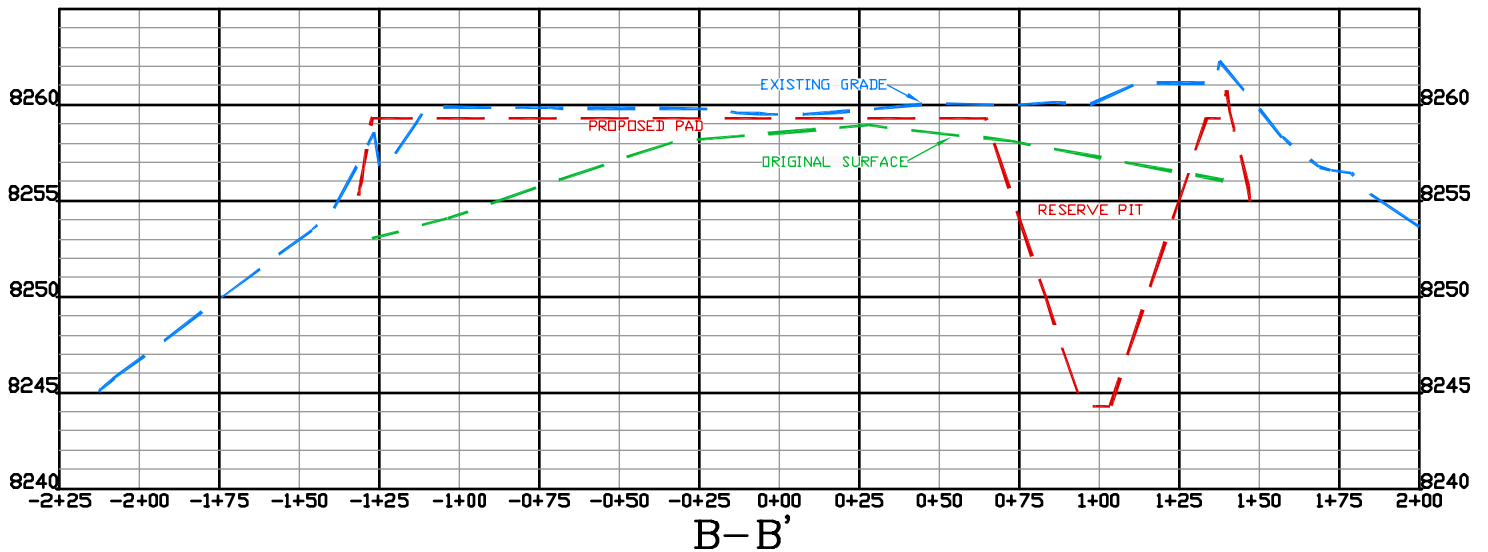
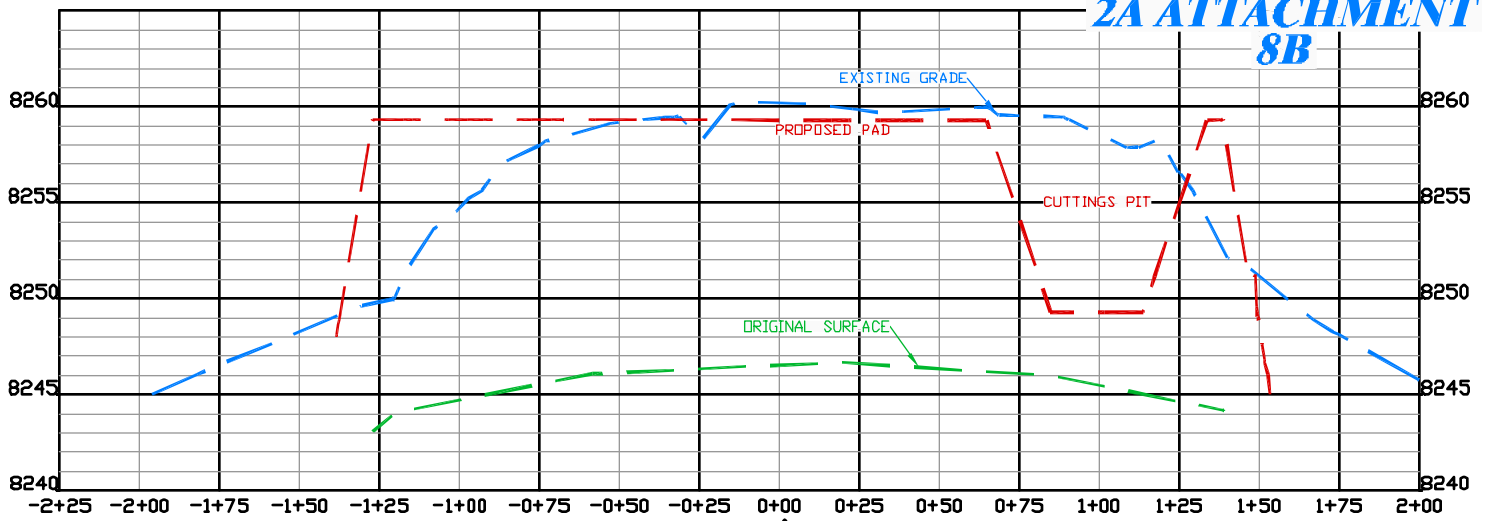


EXHIBIT 2 - SHEET 2 OF 2

2A ATTACHMENT 8B



NOTE: ORIGINAL DRAFTING DONE BY TRI
STATE LAND SURVEYING, INC. -
ORIGINAL SURFACE IS ESTIMATED.

CHEVRON TR 41-32-597 PAD



RIFFIN & ASSOCIATES, INC.
1414 ELK ST., ROCK SPRINGS, WY 82901

(307) 362-6028

DRAWN: 12/7/05

HORZ. 1" = 60' VERT. 1" = 10'

REVISED: 1/6/10 - MMM

DRG JOB No. 13206

MISC. REVISIONS

EXHIBIT 3

CONSTRUCTION LAYOUT DRAWING 3 OF 3

WILLIAMS PRODUCTION RMT COMPANY
CHEVRON TR 41, 42, 331, 332, 342, 431, 432, 441,
442, 531, 541-32-597 & 11, 12, 311, 312, 411, 412,
511-33-597

NENE, SECTION 32, T5S, R97W, 6th P.M.

EXISTING ELEVATION: 8259.3'