

DALEY LAND SURVEYING, INC.

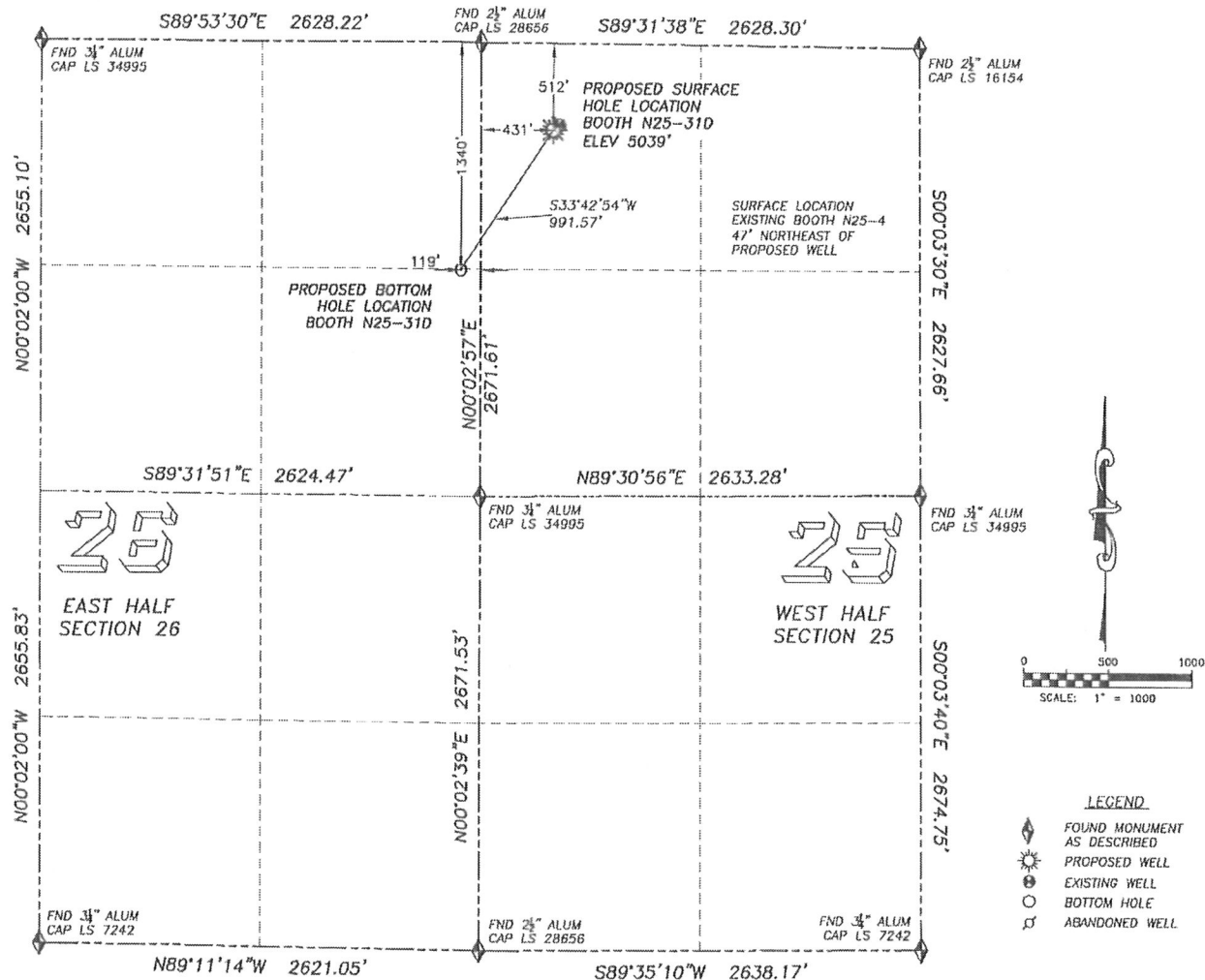
PARKER, CO. 80134

303 953 9841

# WELL LOCATION CERTIFICATE

## BOOTH N25-31D

SECTION 25, TOWNSHIP 5 NORTH, RANGE 67 WEST OF THE 6TH PRINCIPAL MERIDIAN

**NAD 83 LATITUDE AND LONGITUDE****BOOTH N25-31D SURFACE HOLE:**

LATITUDE: N40.37647°  
 LONGITUDE: W104.84941°  
 ELEVATION: 5039'  
 PDOP 1.5

512' FNL, 431' FWL

**BOTTOM HOLE:**

LATITUDE: N40.37421°  
 LONGITUDE: W104.85139°  
 1340' FNL, 119' FEL, S.26, T.5N, R.67W.

**NEAREST EXISTING WELL:**

BOOTH N25-4 SURFACE HOLE  
 LATITUDE: N40.37655°  
 LONGITUDE: W104.84928°  
 ELEVATION: 5039'  
 47' NORTHEAST

QUARTER/QUARTER: NW4/NW4

NEAREST APPARENT PROPERTY LINE:  
 211'± NORTHWEST

IN ACCORDANCE WITH A REQUEST FROM BILL BETSON OF NOBLE ENERGY INC., DALEY LAND SURVEYING, INC. HAS DETERMINED THE SURFACE LOCATION OF THE BOOTH N25-31D WELL TO BE 512' FNL, 431' FWL, AS MEASURED AT NINETY (90) DEGREES FROM THE SECTION LINES OF SECTION 25, TOWNSHIP 5 NORTH, RANGE 67 WEST OF THE 6TH PRINCIPAL MERIDIAN, WELD COUNTY COLORADO.

THE BOTTOM HOLE LOCATION PROVIDED BY THE CLIENT IS TO BE 1340' FNL, 119' FEL OF SEC. 26, T.5N, R.67W.

I HEREBY CERTIFY THAT THIS WELL LOCATION CERTIFICATE WAS PREPARED BY ME OR UNDER MY DIRECT SUPERVISION, THAT THE WORK WAS COMPLETED ON 12/17/2009 FOR AND ON BEHALF OF NOBLE ENERGY, INC., AND THAT THIS MAP DOES NOT REPRESENT A BOUNDARY SURVEY, IT IS NOT A LAND SURVEY PLAT OR AN IMPROVEMENT SURVEY PLAT AND IT IS NOT TO BE RELIED UPON FOR THE ESTABLISHMENT OF FENCE, BUILDING OR OTHER FUTURE IMPROVEMENT LINES.

**NOTES:**

- 1) BASIS OF BEARING FOR THIS MAP IS ASSUMED AND BASED UPON GPS OBSERVATIONS MADE BETWEEN MONUMENTS LOCATED AT THE NORTHWEST AND WEST QUARTER CORNERS OF SECTION 25, T.5N., R.67W., AND ALL BEARINGS SHOWN HEREON ARE RELATIVE THERETO.
- 2) HORIZONTAL DATUM IS NAD83.
- 3) VERTICAL DATUM IS NAVD88. ELEVATIONS ARE DERIVED FROM GPS-RTK OBSERVATIONS PROCESSED THROUGH OPUS, UTILIZING THE GEOID03 MODEL.
- 4) SEE VISIBLE IMPROVEMENTS EXHIBIT FOR VISIBLE IMPROVEMENTS WITHIN 400' OF PROPOSED SURFACE HOLE LOCATION
- 5) SURFACE USE: CROPLAND

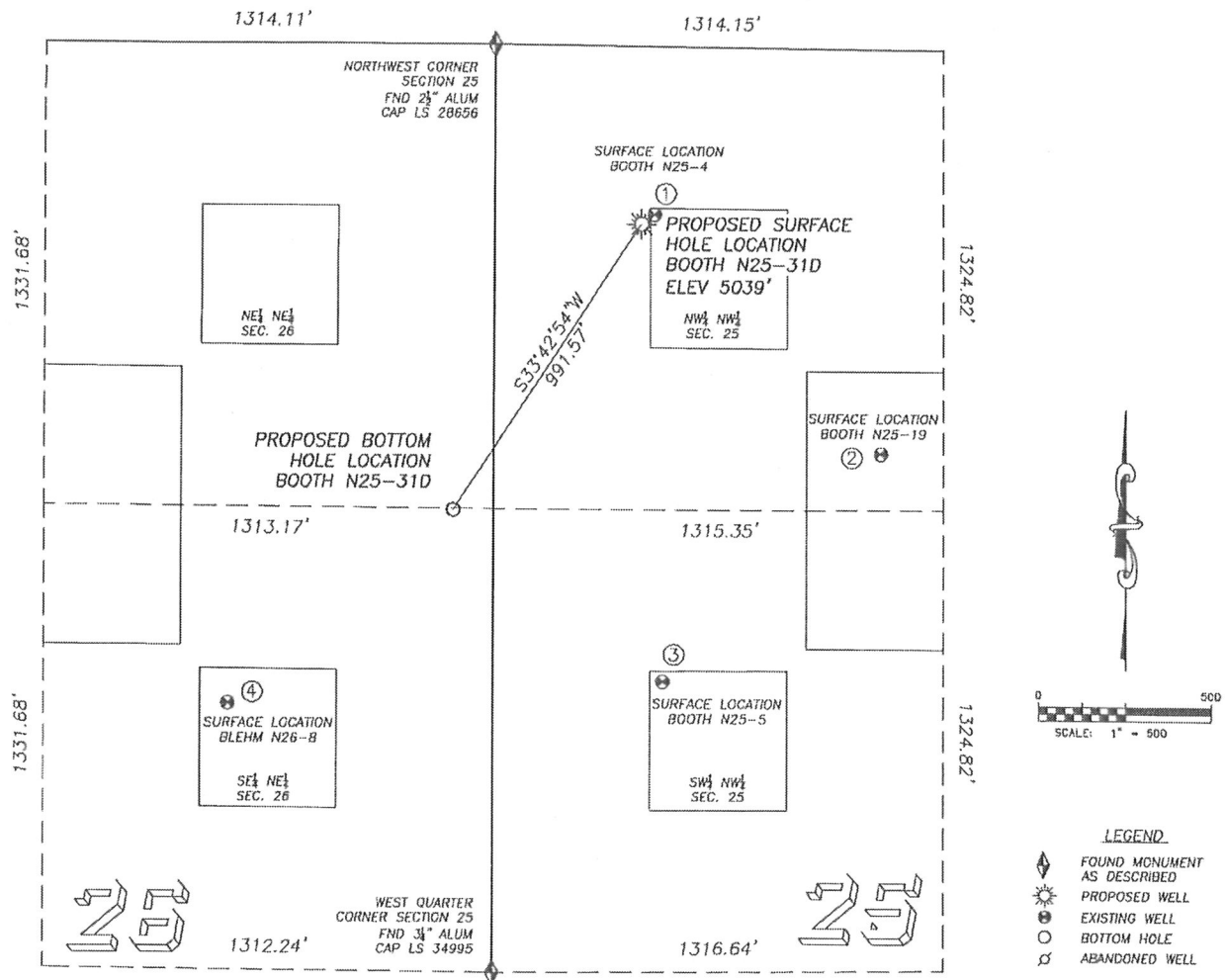
NOTICE: According to Colorado law you MUST commence any legal action based upon any defect in this W.L.C. within three years after you first discover such defect. In no event may any action based upon any such defect in this W.L.C. be commenced more than ten years from the date of the certification shown hereon.



FOR AND ON BEHALF OF  
 DALEY LAND SURVEYING INC.,  
 Robert Daley, PLS 35597

# SITE SKETCH BOOTH N25-31D

SECTION 25, TOWNSHIP 5 NORTH, RANGE 67 WEST OF THE 6TH PRINCIPAL MERIDIAN



- |   |  |   |   |
|---|--|---|---|
| <p>①<br/><b>BOOTH N25-4</b><br/>NW/NW SEC. 25<br/>484' FNL, 469' FWL<br/>1036' NE OF PROPOSED<br/>BOTTOM HOLE LOCATION<br/>LAT. N40.37655'<br/>LONG. W104.84928'<br/>EL: 5039'<br/>PDOP 2.4</p> | <p>②<br/><b>BOOTH N25-19</b><br/>NW/NW SEC. 25<br/>1164' FNL, 1133' FWL<br/>1263' NE OF PROPOSED<br/>BOTTOM HOLE LOCATION<br/>LAT. N40.37467'<br/>LONG. W104.84690'<br/>EL: 5038'<br/>PDOP 1.6</p> | <p>③<br/><b>BOOTH N25-5</b><br/>SW/NW SEC. 25<br/>1828' FNL, 469' FWL<br/>787' SE OF PROPOSED<br/>BOTTOM HOLE LOCATION<br/>LAT. N40.37286'<br/>LONG. W104.84919'<br/>EL: 5018'<br/>PDOP 2.4</p> | <p>④<br/><b>BLEHM N26-8</b><br/>SE/NE SEC. 26<br/>1900' FNL, 777' FEL<br/>864' SW OF PROPOSED<br/>BOTTOM HOLE LOCATION<br/>LAT. N40.37268'<br/>LONG. W104.85375'<br/>EL: 5015'<br/>PDOP 2.4</p> |
|---|--|---|---|

NOTES:  
1) THIS DOES NOT REPRESENT A BOUNDARY SURVEY  
2) THE LATITUDES AND LONGITUDES SHOWN ARE REFERENCED TO NAD83  
3) DATUM FOR ELEVATION IS NAVD83. ELEVATIONS ARE DERIVED FROM GPS-RTK OBSERVATIONS PROCESSED THROUGH OPUS, UTILIZING THE GEOID03 MODEL.