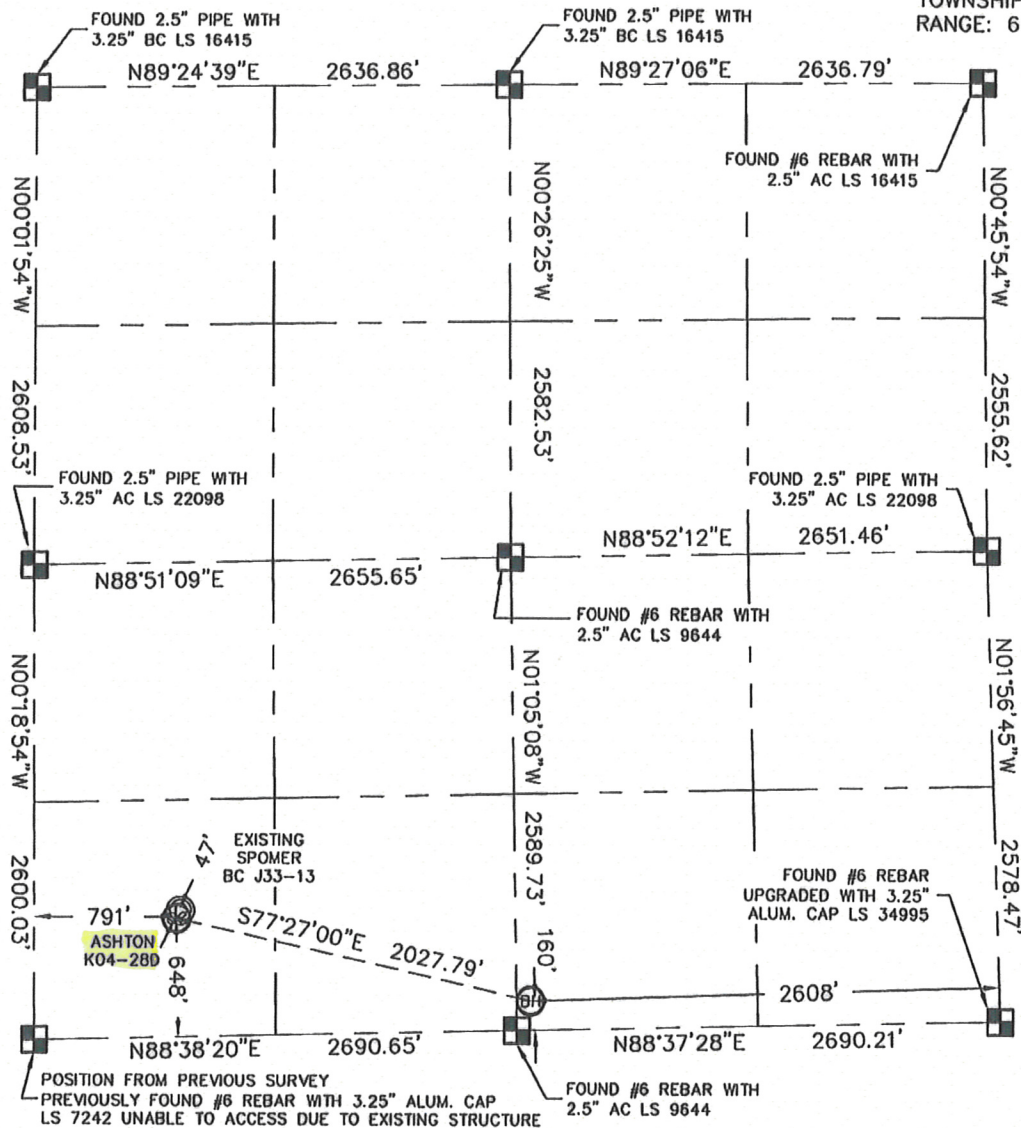


KING SURVEYORS, INC. 650 GARDEN DR. WINDSOR, CO 80550

## WELL LOCATION CERTIFICATE

THIS MAP DOES NOT REPRESENT A BOUNDARY SURVEY

SECTION: 33  
TOWNSHIP: 5N  
RANGE: 66W



In accordance with a request from Sean Howley with Noble Energy Inc.

King Surveyors Inc. has determined the surface location of the ASHTON K04-280 to be 648' from the SOUTH line and 791' from the WEST line and the bottom hole to be 160' from the SOUTH line and 2608' from the EAST line as measured at right angles from the section line of Section 33, Township 5 North, Range 66 West of the Sixth Principal Meridian, County of Weld, State of Colorado.

I hereby state that this Well Location Certificate was prepared by me, or under my direct supervision, that the fieldwork was completed on May 20, 2009, for and on behalf of Noble Energy Inc. That this is not a Land Survey Plat or an Improvement Survey Plat, and that it is not to be relied upon for establishment of fence, building, or other future improvement lines.

### NOTE:

- 1) Bearings shown are Grid Bearings of the Colorado State Plane Coordinate System, North Zone, North American Datum 1983/92.
- 2) Ground elevations are based on an observed GPS elevation (NAVD 1988 DATUM).
- 3) NEAREST EXISTING WELL: SPOMER BC J33-13 47'
- 4) IMPROVEMENTS: See VISIBLE IMPROVEMENTS exhibit for all improvements within 400' of well head
- 5) SURFACE USE: EXISTING WELL SITE/PASTURE

### SURFACE LOCATION

LATITUDE: 40.35076°N  
LONGITUDE: 104.79136°W  
PDOP: 1.5  
ELEV: 4709  
1/4, 1/4: SW1/4SW1/4  
NEAREST PROPERTY LINE: 648' SOUTH

### BOTTOM HOLE

LATITUDE: 40.34951°N  
LONGITUDE: 104.78427°W

### NOTE

According to Colorado law, you must commence any legal action based upon any defect in this W.L.C. within three years after you discover such defect. In no event, may any action based upon any defect in this survey be commenced more than ten years after the date of the certificate shown hereon. (13-80-105 C.R.S.)

### LEGEND

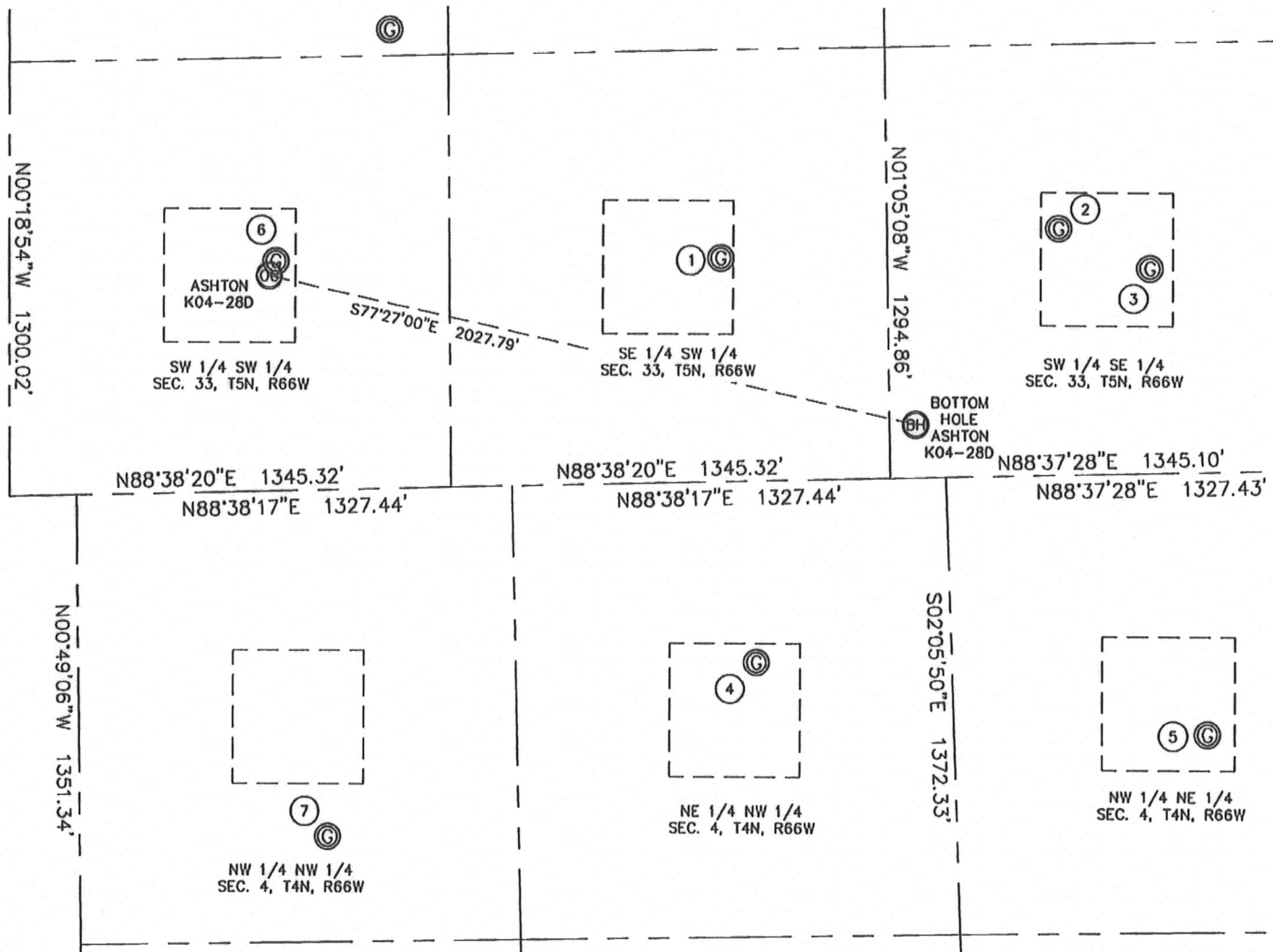
- = ALIQUOT MONUMENT AS DESCRIBED
- = CALCULATED POSITION

Steven A. Lundberg, King Surveyors, Inc.  
Licensed Land Surveyor No. 34995  
State of Colorado

PROJECT: 2008108  
DATE: 2009

KING SURVEYORS, INC. 650 GARDEN DR. WINDSOR, CO 80550  
**SITE SKETCH**

SECTION: 33  
 TOWNSHIP: 5N  
 RANGE: 66W



①  
 SPOMER BC J33-14  
 SE1/4 SW1/4  
 672' FSL  
 2174' FWL  
 LAT: 40.35089°N  
 LONG: 104.78639°W  
 PDOP: 1.8  
 ELEV: 4693

②  
 DOS RIOS J 33-15  
 SW1/4 SE1/4  
 741' FSL  
 2154' FEL  
 LAT: 40.35112°N  
 LONG: 104.78270°W  
 PDOP: 2.2  
 ELEV: 4693

③  
 CAMENISCH 33-15H6  
 SW1/4 SE1/4  
 617' FSL  
 1881' FEL  
 LAT: 40.35080°N  
 LONG: 104.78170°W  
 PDOP: 2.1  
 ELEV: 4686

④  
 ALVA SHABLE 1-4  
 NE1/4 NW1/4  
 543' FSL  
 2071' FWL  
 LAT: 40.35344°N  
 LONG: 104.78704°W  
 PDOP: 1.4  
 ELEV: 4742

⑤  
 CAMENISCH SUPREME CAMP 2-4  
 NW1/4 NE1/4  
 785' FNL  
 1905' FEL  
 LAT: 40.34695°N  
 LONG: 104.78111°W  
 PDOP: 1.7  
 ELEV: 4687

⑥  
 SPOMER BC J33-13  
 SW1/4 SW1/4  
 690' FSL  
 811' FWL  
 LAT: 40.35088°N  
 LONG: 104.79128°W  
 PDOP: 1.6  
 ELEV: 4710

⑦  
 HSR-GUY SHABLE INC. 4-4  
 NW1/4 NW1/4  
 1038' FNL  
 754' FWL  
 LAT: 40.34614°N  
 LONG: 104.79073°W  
 PDOP: 1.9  
 ELEV: 4691

