

R88W

N89°58'45"E - 5262.83'(M)
N90°00'E - 5276.04'(R)

SET ALUMINUM CAP
PLS 36566
LAT 40.964504
LONG 107.296991

1920 BRASS CAP
LAT 40.964501
LONG 107.277934

N00°03'41"W - 2639.01' (M)
N00°03'1"W - 2640' (R)

1920 BRASS CAP
LAT 40.950025
LONG 107.297013

N00°08'56"W - 2636.32' (M)
N00°03'1"W - 2640' (R)

1920 BRASS CAP
LAT 40.950025
LONG 107.297013

S89°59'07"W - 5276.37' (M)
N90°00'W - 5280' (R)

1920 BRASS CAP
LAT 40.950025
LONG 107.297013

NAD83
BUTTER LAKE FEDERAL 32-10
LAT 40°57'24.6"
(40.956837)
LONG 107°17'03.2"
(107.284222)

STATE PLANE (CN)
N=1,596,388 ft
E=2,507,191 ft

NOTES:

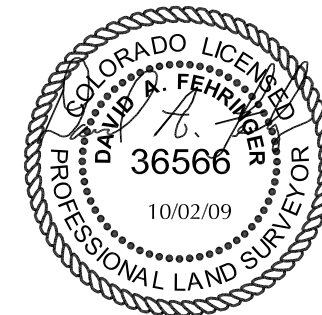
1. ○ INDICATES FOUND MONUMENT AS DESCRIBED
2. ELEVATIONS BASED ON NGVD29 BENCH MARK (X72) EL: 6555.98'
3. THE BASIS OF BEARING IS NAD83 DERIVED FROM POST-PROCESSED STATIC GPS OBSERVATIONS.
4. PDOP VALUE EQUALS 3.2.
4. GPS OPERATOR: DAVID SIMS

REFERENCE STAKES:

150' WEST - EL: 7505.2'
175' WEST - EL: 7503.5'
150' NORTH - EL: 7512.9'
175' NORTH - EL: 7512.5'

CERTIFICATE OF SURVEYOR

I, David A. Fehringer of Lander, Wyoming hereby certify that this map was made from notes taken during an actual survey made on SEPTEMBER 17, 2009, and that it correctly shows the drilling location of New Frontier Energy, Inc., Butter Lake Federal 32-10 as staked during said survey.



0 500 1000
1" = 1000'

T
12
N

N00°02'31"E - 5274.75' (M)
N00°04'1"W - 5280' (R)

32

BUTTER LAKE FED 32-10
SURFACE HOLE LOCATION
GROUND ELEV: 7518'

2482'

1738'

ENTEK GRB, LLC

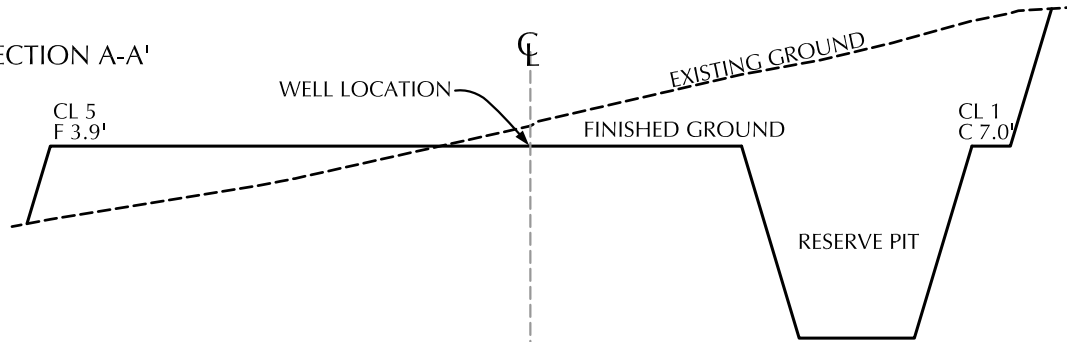
BUTTER LAKE FEDERAL 32-10
WELL LOCATION CERTIFICATE
2482' FSL, 1738' FEL

NW¼SE¼, SEC 32, T.12N., R.88W., 6th PM
ROUTT COUNTY, COLORADO

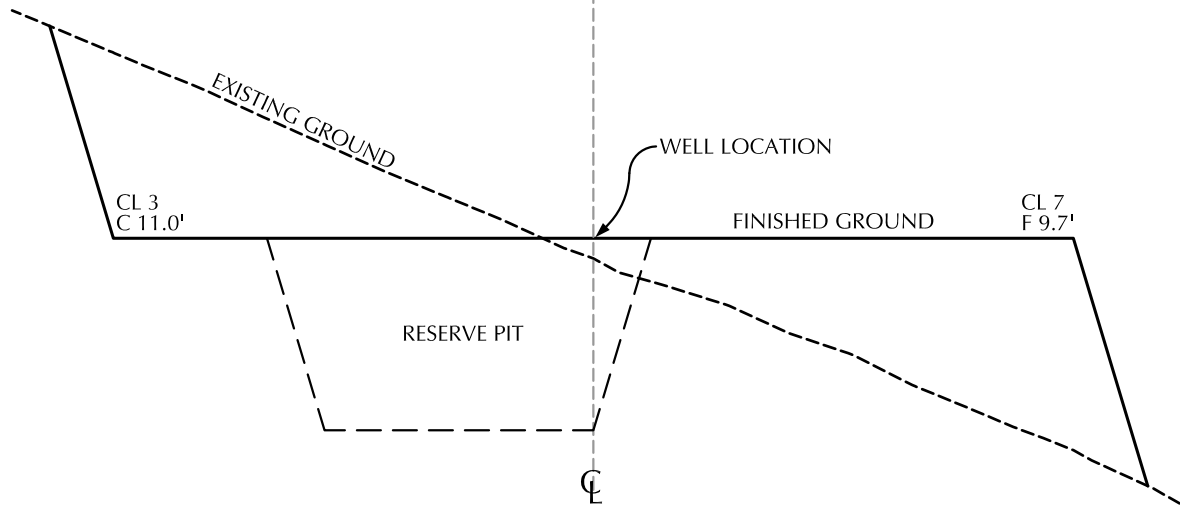
CHOICE ENGINEERING SERVICES
404 "N" Street - Suite 201 | Rock Springs, WY 82901
Phone 307-362-6065 | Fax 307-362-6064

Scale: 1"=1000'	Date: 09/24/09	SHEET NO:
REVISED:	DF 03/10/10	1

SECTION A-A'



SECTION B-B'



BUTTER LAKE FEDERAL 32-10

EXISTING GRADE @ CENTER OF WELL PAD = 7,518.0'

FINISHED GRADE ELEVATION = 7,517.0'

CUT SLOPES = 1.5:1

FILL SLOPES = 1.5:1

TOTAL CUT FOR WELL PAD = 9,645 C.Y.

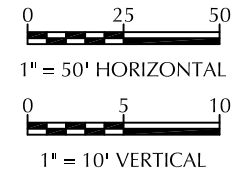
TOTAL FILL FOR WELL PAD = 6,241 C.Y.

TOPSOIL @ 6" DEPTH = 1,400 C.Y.

SHRINKAGE (10%) = 824 C.Y.

EXCESS MATERIAL = 1,180 C.Y.

TOTAL DISTURBANCE = 1.81 ACRES



ENTEK GRB, LLC

BUTTER LAKE FEDERAL 32-10

CROSS SECTIONS

2482' FSL, 1738' FEL

NW $\frac{1}{4}$ SE $\frac{1}{4}$, SEC 32, T.12N., R.88W., 6th PM
ROUTT COUNTY, COLORADO

CHOICE ENGINEERING SERVICES

404 "N" Street - Suite 201 | Rock Springs, WY 82901
Phone 307-362-6065 | Fax 307-362-6064

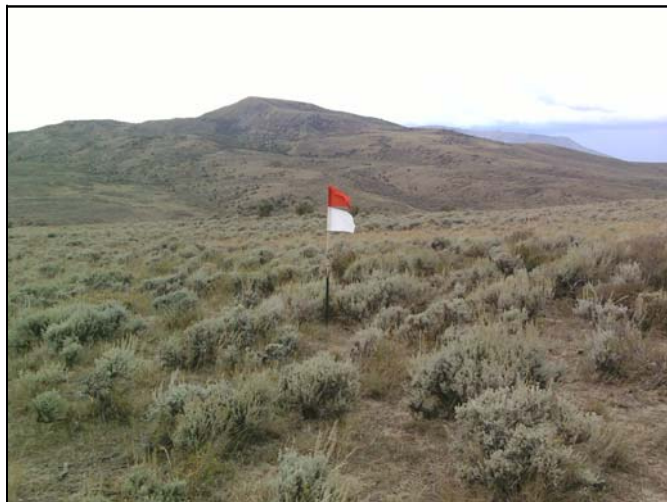
Scale: 1"=50'

Date: 09/24/09

SHEET NO:

3

REVISION #2
DF - 3/10/10



CENTERHOLE LOOKING NORTH



CENTERHOLE LOOKING SOUTH



CENTERHOLE LOOKING WEST



CENTERHOLE LOOKING EAST

ENTEK GRB, LLC

BUTTER LAKE FEDERAL 32-10
LOCATION PHOTOS
2482' FSL, 1738' FEL
NW $\frac{1}{4}$ SE $\frac{1}{4}$, SEC 32, T.12N., R.88W., 6th PM
ROUTT COUNTY, COLORADO

CHOICE ENGINEERING SERVICES
404 "N" Street - Suite 201 | Rock Springs, WY 82901
Phone 307-362-6065 | Fax 307-362-6064

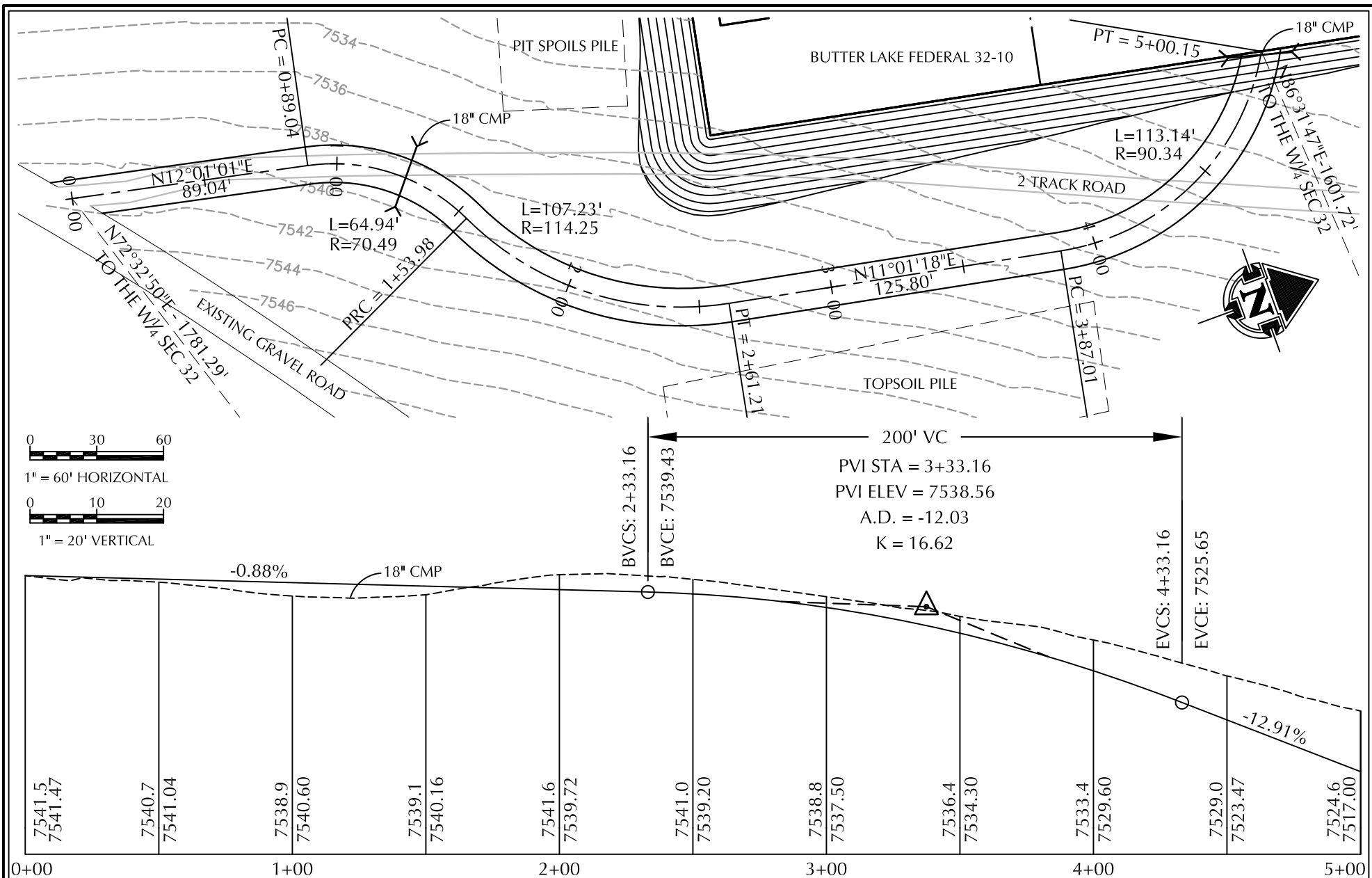
Scale:

Date: 09/24/09

SHEET NO:

REVISION #2
DF - 3/10/10

5



ENTEK GRB, LLC
 BUTTER LAKE FEDERAL 32-10
 PROPOSED ROAD
 NW¼SE¼, SEC 32, T.12N., R.88W., 6th PM
 ROUTT COUNTY, COLORADO

CHOICE ENGINEERING SERVICES
 404 "N" Street - Suite 201 | Rock Springs, WY 82901
 Phone 307-362-6065 | Fax 307-362-6064

Scale: 1"=60'	Date: 09/24/09
REVISION #2 DF - 3/10/10	

SHEET NO:

6

TOTAL DISTURBANCE = 0.18 AC+/-
 DESIGN SPEED = 20MPH



ENTEK GRB, LLC

BUTTER LAKE FEDERAL 32-10
 400' IMPROVEMENTS MAP
 2482' FSL, 1738' FEL
 NW $\frac{1}{4}$ SE $\frac{1}{4}$, SEC 32, T.12N., R.88W., 6th PM
 ROUTT COUNTY, COLORADO

CHOICE ENGINEERING SERVICES
 404 "N" Street - Suite 201 | Rock Springs, WY 82901
 Phone 307-362-6065 | Fax 307-362-6064

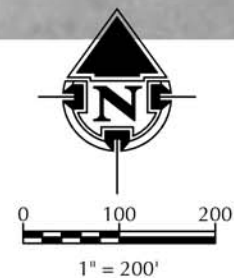
Scale: 1"=200'

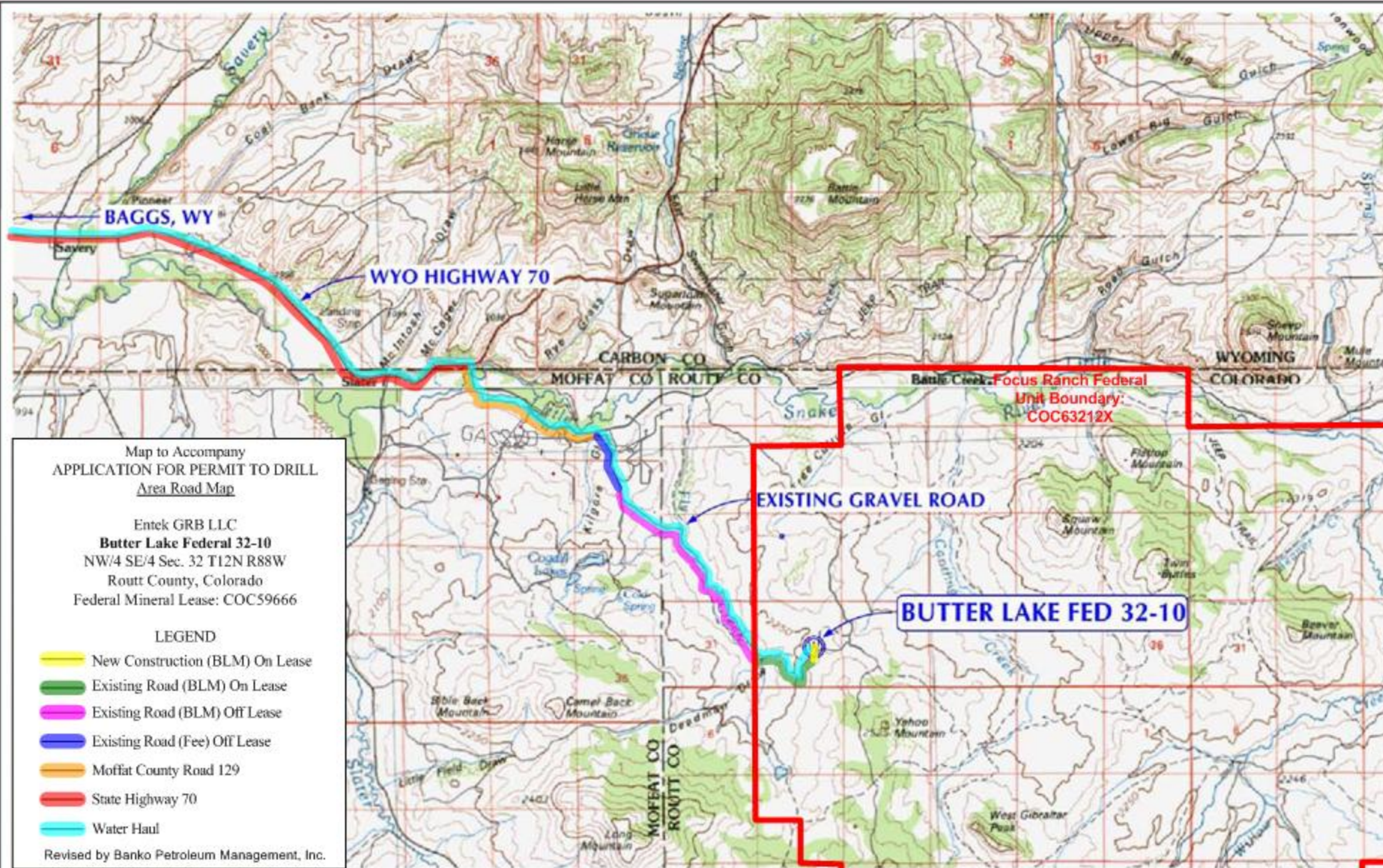
Date: 09/24/09

SHEET NO:

REVISION #2
 DF - 3/10/10

7





ENTEK GRB, LLC

**BUTTER LAKE FEDERAL 32-10
LOCATION MAP**

**2482' FSL, 1738' FEL
NW¼SE¼, SEC 32, T.12N., R.88W., 6th PM
ROUTT COUNTY, COLORADO**

CHOICE ENGINEERING SERVICES

404 "N" Street - Suite 201 | Rock Springs, WY 82901
Phone 307-362-6065 | Fax 307-362-6064

Scale:

Date: 09/24/09

SHEET NO:

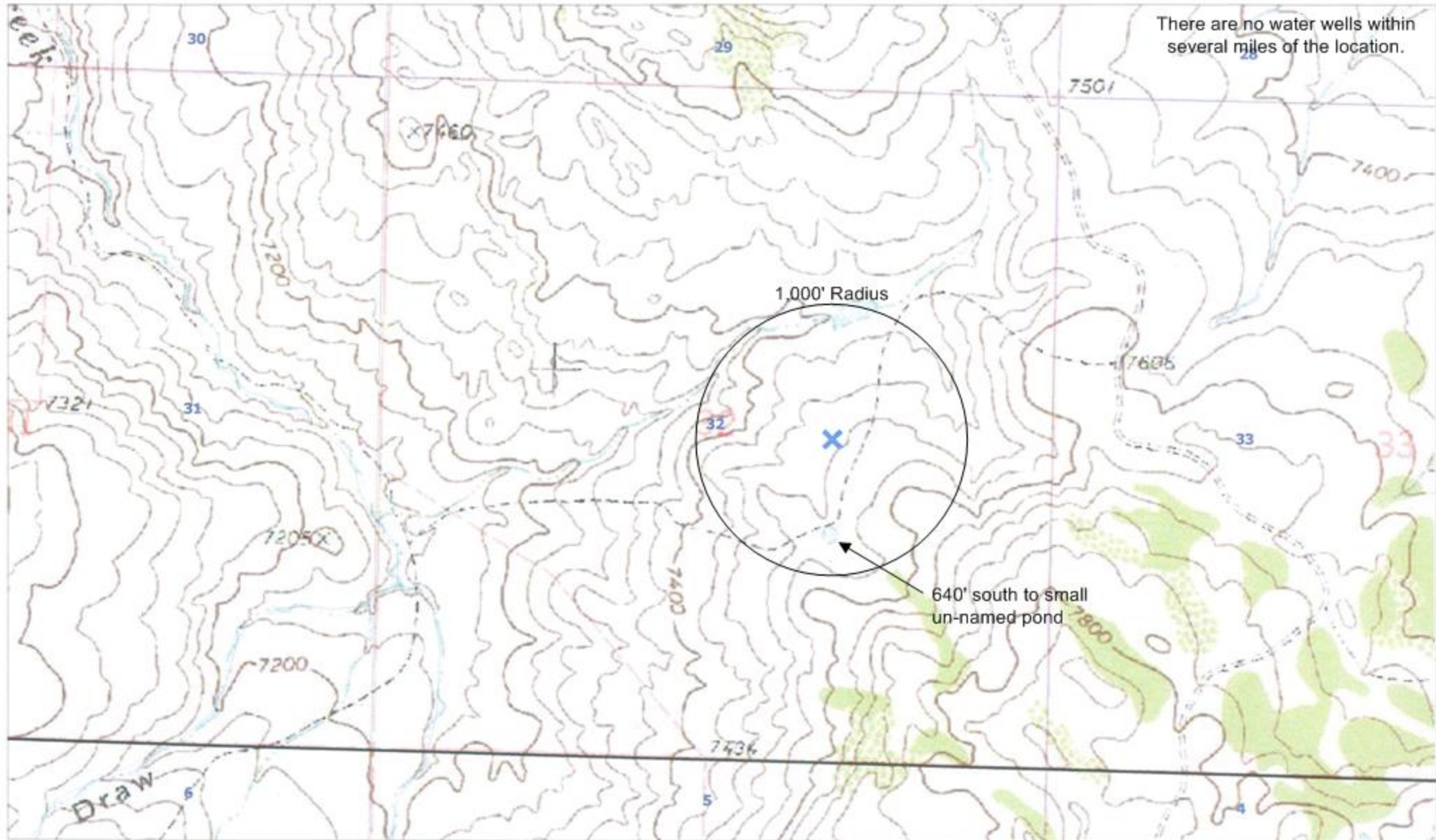
REVISION #2
DF - 3/10/10

8



1:100,000 metric

Butter Lake Federal 32-10 Surface Water/Raparian Area Map



SCALE 1 : 12,632

