

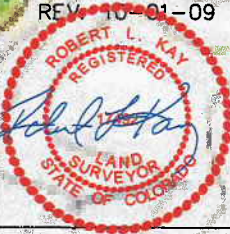
BERRY PETROLEUM COMPANY

BOTTOM HOLE FOOTAGE

WELL PAD I21 697
SECTION 21, T6S, R97W, 6th P.M.
NE 1/4 SE 1/4

Sheet 6 of 12

DATE: 08-12-09
Drawn By: C.H.
REV: 10-01-09



NE Cor. Sec. 21
1917 Brass Cap
1.0' High, Steel
Post
Lat: 39.515730
Long: 108.215446

1938 Brass Cap
1.7' High, Mound
of Stones
Lat: 39.508483
Long: 108.215437

N00°00'36"E - 2640.50' (Meas.)

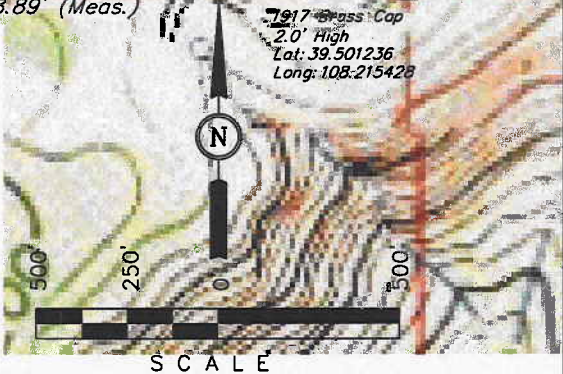
N00°00'37"E - 2640.51' (Meas.)

N89°52'44"W - 2638.89' (Meas.)

1917 Brass Cap
2.0' High
Lat: 39.501236
Long: 108.215428

| LINE TABLE | | |
|------------|-------------|----------|
| LINE | DIRECTION | LENGTH |
| L1 | N69°22'37"W | 1419.12' |
| L2 | N00°47'51"W | 503.35' |
| L3 | N05°35'16"E | 189.43' |
| L4 | S41°12'30"E | 91.09' |
| L5 | S01°54'11"E | 1367.11' |
| L6 | N71°14'02"W | 2740.68' |
| L7 | N81°27'19"W | 1380.51' |
| L8 | S85°26'24"W | 1360.94' |

| LINE TABLE | | |
|------------|-------------|----------|
| LINE | DIRECTION | LENGTH |
| L9 | S74°00'57"W | 1407.05' |
| L10 | S62°59'26"W | 1567.51' |
| L11 | S52°00'44"W | 1681.06' |
| L12 | S45°06'21"W | 1911.60' |
| L13 | S40°42'28"W | 2159.51' |
| L14 | S11°11'14"W | 385.27' |
| L15 | S07°54'37"W | 655.61' |
| L16 | S05°16'42"W | 971.39' |
| L17 | S03°36'56"W | 1622.34' |



UINTAH ENGINEERING & LAND SURVEYING
85 So. 200 East * Vernal, Utah 84078 * (435) 789-1017