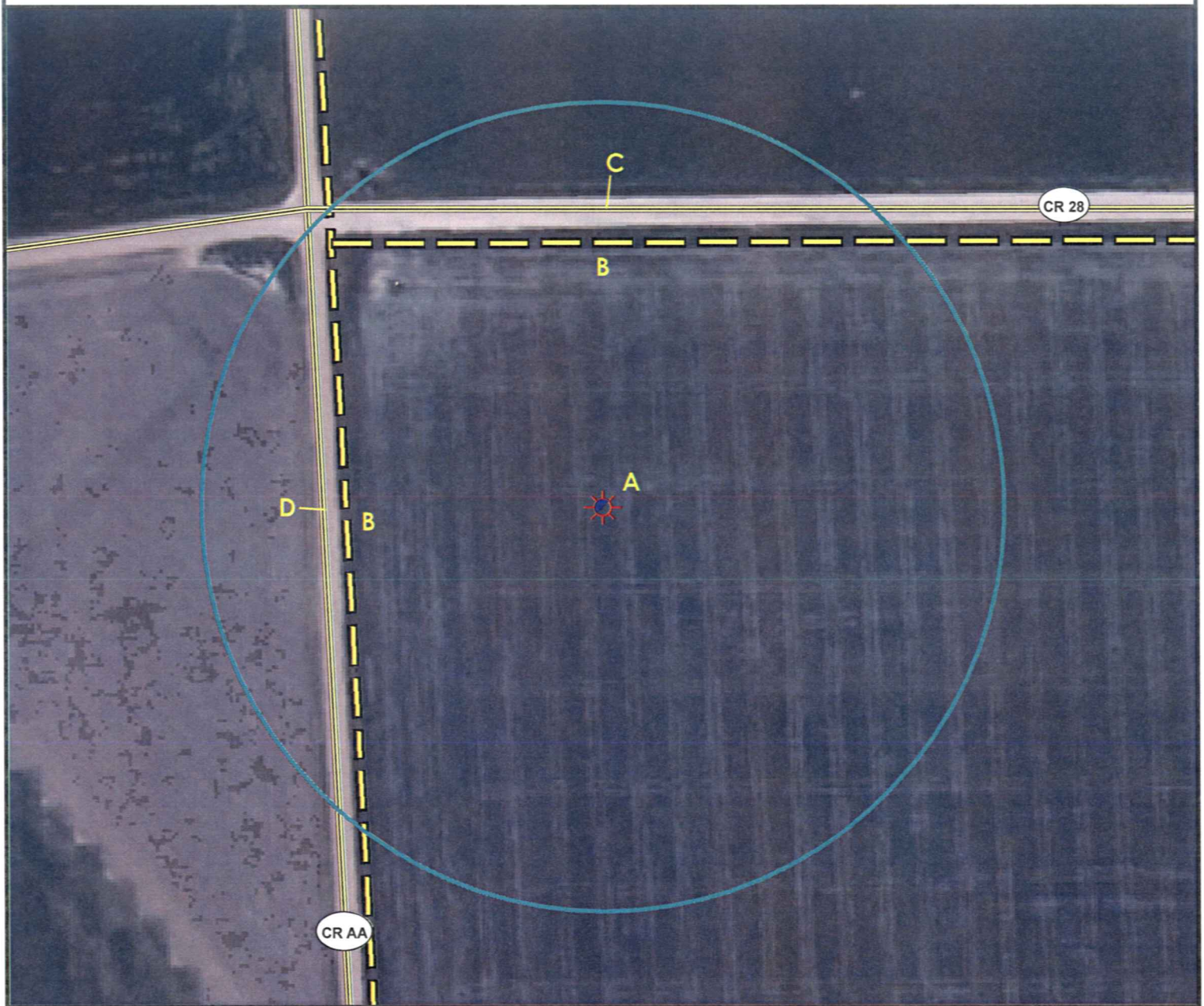


Location Drawing

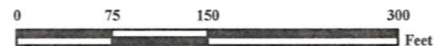


A. Proposed Well REPUBLICAN SWD.

B. Overhead Powerlines are 260' N & 250' W.

C. Yuma County Road 28 is 278' N.

D. Yuma County Road AA is 265' W.



Legend

	Proposed Well		Building/Residence
	Existing Well		Oil & Gas Equipment
	Water Well		Water Body
	Pedestal		Utility Box
	CattleGuard/Gate		Railroad
	Bridge		Fence
	ECD		Overhead Power Line
	400' Radius		Pipeline
	Facilities Enclosure		County Road
			Ditch/Canal
			Concrete Walled Ditch

400ft Radius Map

REPUBLICAN SWD

Surface Location: T1S R44W S18
Description of surface use: Dryland Crop

Field Date: 3/2/2010
Drawing Date: 3/4/2010
Drafter: CGR
Checked By: BHF

Aerial Photo supplied by NAIP (2009)

Prepared for:
Rosetta Resources
Operating LP
717 Texas Avenue, Ste. 2800
Houston, TX 77002



Use our resources to find yours!
www.petro-fs.com

1801 W. 13th Ave Suite 207
Denver, CO 80204
(303) 928-7128
111 E. Third Street
Rifle, CO 81650
(970) 625-4740