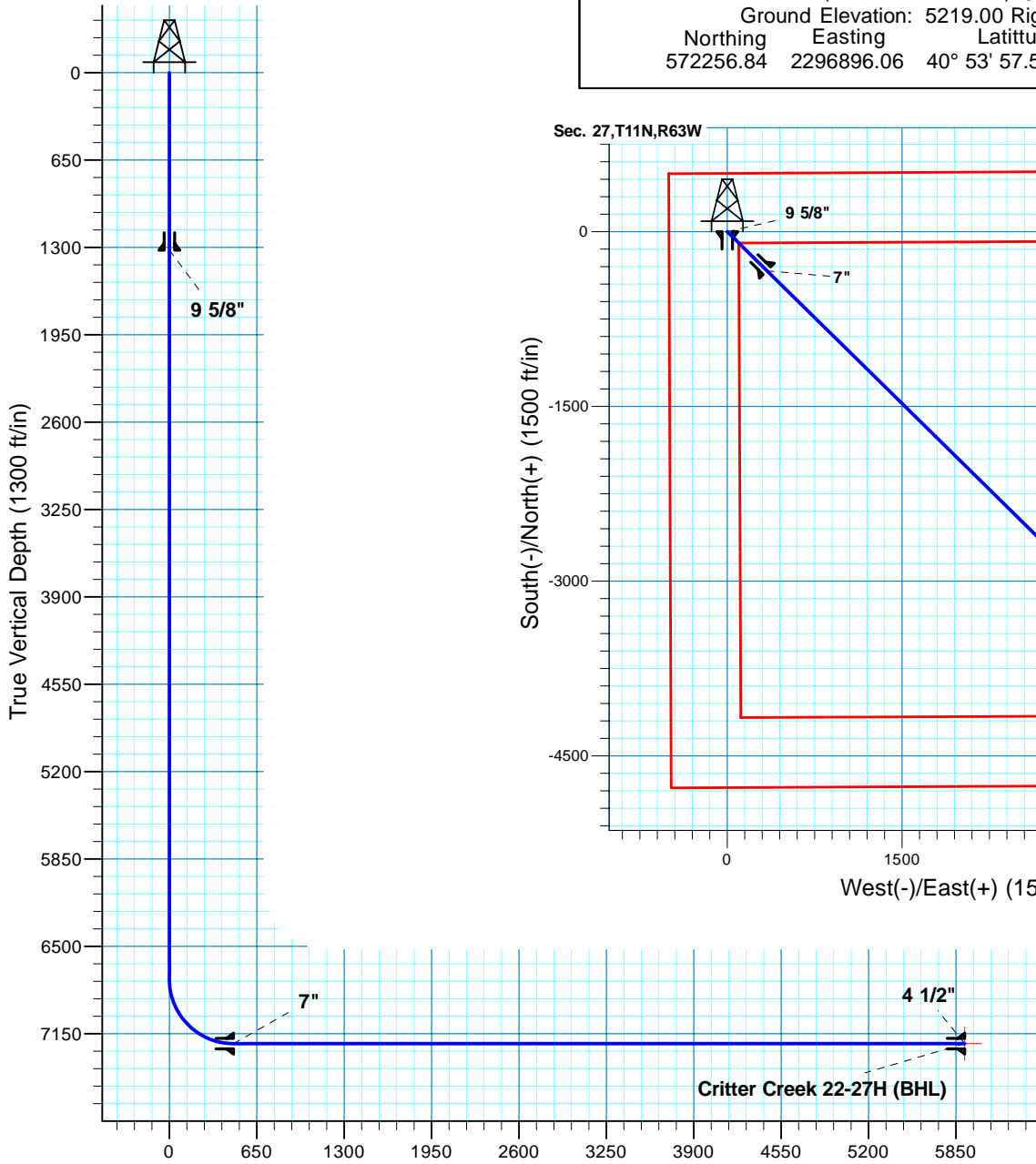


**Critter Creek 22-27H**  
 Section 27 T11N R63W  
 Weld County, CO

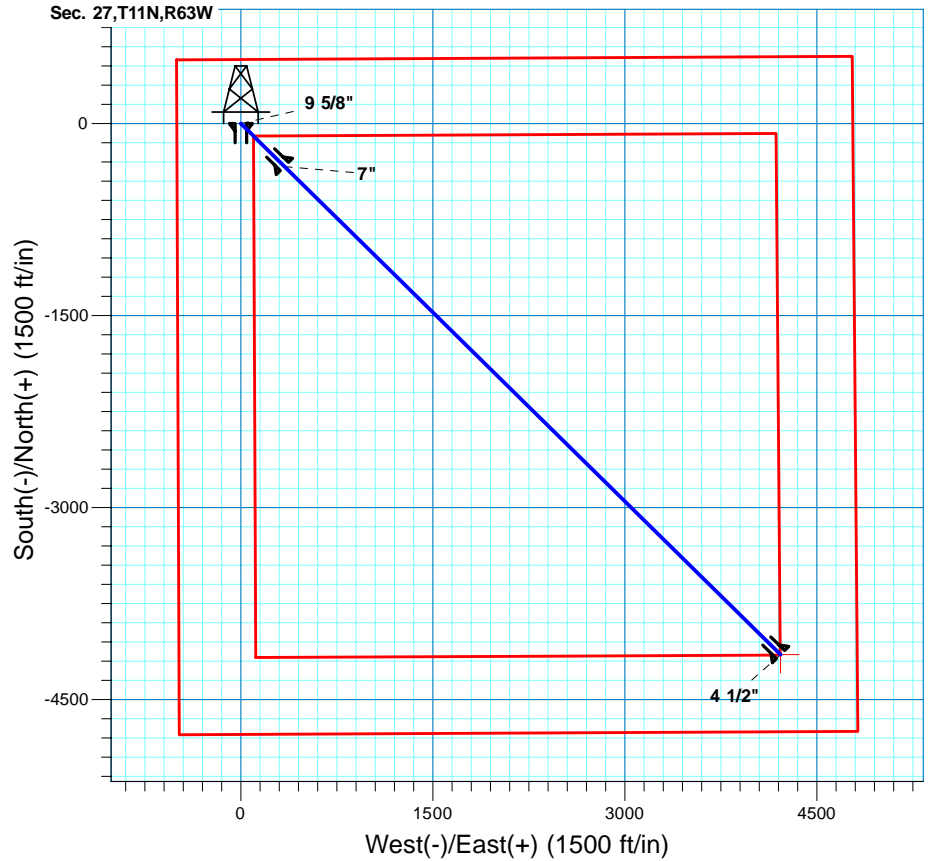


Surface Location

NAD 1927 (NADCON CONUS) Colorado North 501  
 Ground Elevation: 5219.00 Rig @ 5244.00ft  
 Northing Easting Latitude Longitude  
 572256.84 2296896.06 40° 53' 57.509 N 104° 25' 33.881 W



Vertical Section at 134.53deg (1300 ft/in)



Azimuths to True North  
 Magnetic North: 8.88°

Magnetic Field  
 Strength: 53595.0nT  
 Dip Angle: 67.57°  
 Date: 12/31/2009  
 Model: IGRF200510

Project: DJ - Hereford Ranch  
 Site: Critter Creek 22-27H  
 Well: Critter Creek 22-27H  
 Plan: APD Directional Plan

SECTION DETAILS

Sec	MD	Inc	Azi	TVD	+N/-S	+E/-W	DLeg	TFace	VSec	Target
1	0.00	0.00	0.00	0.00	0.00	0.00	0.00	0.00	0.00	
2	6746.53	0.00	0.00	6746.53	0.00	0.00	0.00	0.00	0.00	
3	7496.54	90.00	134.53	7224.00	-334.87	340.35	12.00	134.53	477.47	
4	12933.55	90.00	134.53	7224.00	-4148.06	4216.00	0.00	0.00	5914.48	Critter Creek 22-27H (BHL)

TARGET DETAILS

Name	TVD	+N/-S	+E/-W	Northing	Easting	Latitude	Longitude	Shape
Critter Creek 22-27H (BHL)	7224.00	-4148.06	4216.00	568160.15	2301161.98	40° 53' 16.519 N	104° 24' 38.992 W	Point