

T11N, R63W, 6th P.M.

1921 Brass Cap 1.3'
Below Road
Lat: 40.900656°
Long: 104.428408°

EOG RESOURCES, INC.

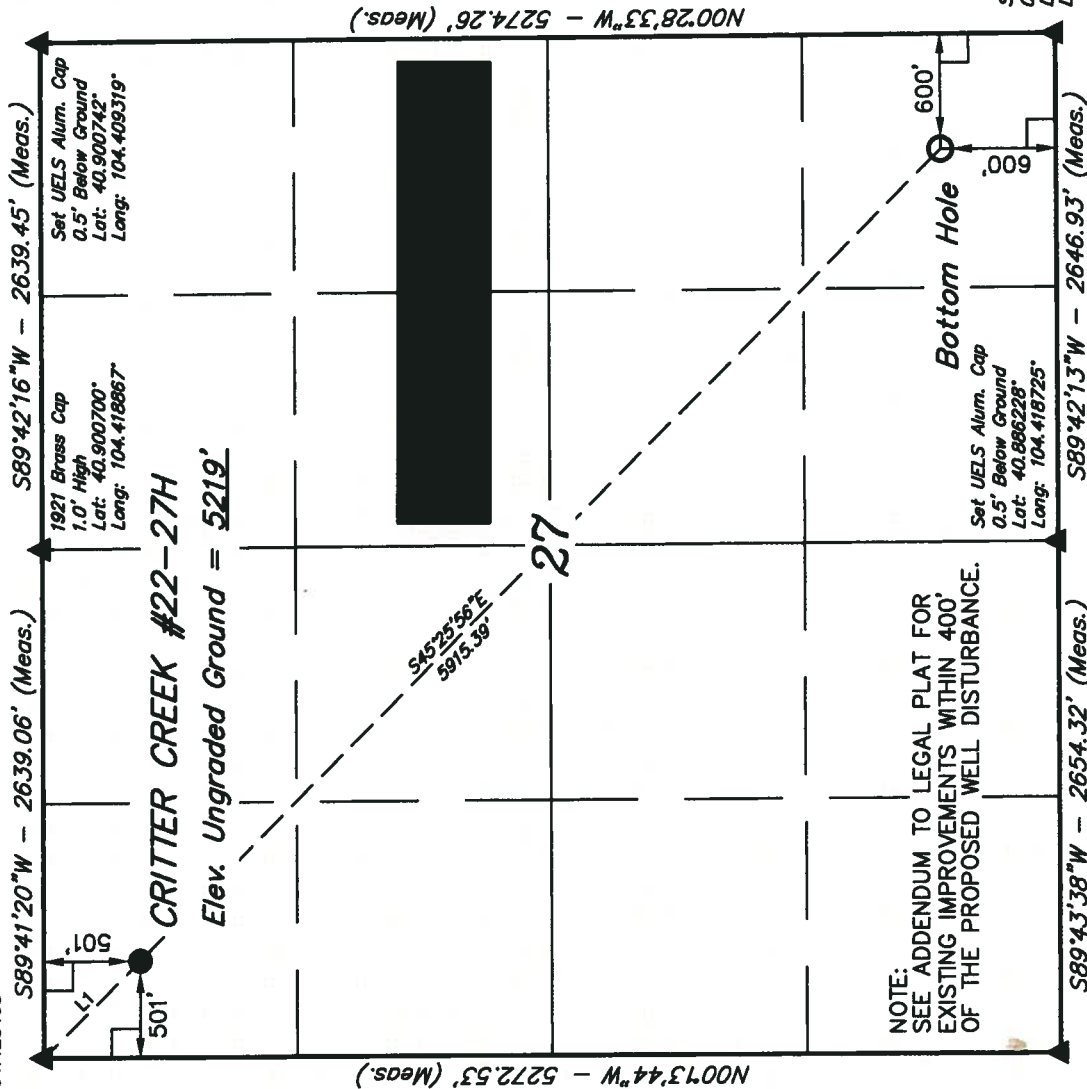
Well location, CRITTER CREEK #22-27H, located as shown in the NW 1/4 NW 1/4 of Section 27, T11N, R63W, 6th P.M., Weld County, Colorado.

BASIS OF ELEVATION

SPOT ELEVATION AT THE NORTHEAST CORNER OF SECTION 1, T11N, R63W, 6th P.M. TAKEN FROM THE HEREFORD, QUADRANGLE, COLORADO, WELD COUNTY, 7.5 MINUTE QUAD (TOPOGRAPHIC MAP) PUBLISHED BY THE UNITED STATES DEPARTMENT OF THE INTERIOR, GEOLOGICAL SURVEY. SAID ELEVATION IS MARKED AS BEING 5352 FEET.

BASIS OF BEARINGS

BASIS OF BEARINGS IS A G.P.S. OBSERVATION.



NOTE: SEE ADDENDUM TO LEGAL PLAT FOR EXISTING IMPROVEMENTS WITHIN 400' OF THE PROPOSED WELL DISTURBANCE.

Set UELS Alum. Cap
0.5' Below Ground
Lat: 40.886228°
Long: 104.418725°

Set UELS Alum. Cap
0.5' Below Ground
Lat: 40.886269°
Long: 104.409153°



SCALE

CERTIFICATE

THIS IS TO CERTIFY THAT THE ABOVE PLAT WAS PREPARED FROM FIELD NOTES OF ACTUAL SURVEYS MADE BY ME OR UNDER MY SUPERVISION AND THAT THE SAME ARE TRUE AND CORRECT TO THE BEST OF MY KNOWLEDGE AND BELIEF.

REGISTERED LAND SURVEYOR
REGISTRATION NO. 172492
STATE OF COLORADO

Set UELS Alum. Cap
Lat: 40.886189°
Long: 104.428322°

S89°43'38"W - 2654.32' (Meas.)

S89°42'13"W - 2646.93' (Meas.)

N00°28'33"W - 5274.26' (Meas.)

S89°42'16"W - 2639.45' (Meas.)

Set UELS Alum. Cap
0.5' Below Ground
Lat: 40.900742°
Long: 104.409319°

CRITTER CREEK #22-27H
Elev. Ungraded Ground = 5219'

1921 Brass Cap
1.0' High
Lat: 40.900700°
Long: 104.418867°

PDOP = 1.8

NAD 83 (TARGET BOTTOM HOLE)		NAD 83 (SURFACE LOCATION)	
LATITUDE = 40°53'16.46"	(40.887906)	LATITUDE = 40°53'57.45"	(40.899292)
LONGITUDE = 104°24'40.83"	(104.411342)	LONGITUDE = 104°25'35.72"	(104.426589)
NAD 27 (TARGET BOTTOM HOLE)		NAD 27 (SURFACE LOCATION)	
LATITUDE = 40°53'16.52"	(40.887922)	LATITUDE = 40°53'57.51"	(40.899308)
LONGITUDE = 104°24'38.89"	(104.410831)	LONGITUDE = 104°25'33.88"	(104.426078)
STATE PLANE NAD 83 (COLORADO NORTH)		STATE PLANE NAD 83 (COLORADO NORTH)	
TARGET BOTTOM HOLE		SURFACE LOCATION	
N: 1568162.43 E: 3301012.59		N: 1572258.71 E: 3298746.92	
STATE PLANE NAD 27 (COLORADO NORTH)		STATE PLANE NAD 27 (COLORADO NORTH)	
TARGET BOTTOM HOLE		SURFACE LOCATION	
N: 568160.64 E: 2301161.91		N: 572256.84 E: 2298896.29	

LEGEND:

— = 90° SYMBOL

● = PROPOSED WELL HEAD.

▲ = SECTION CORNERS LOCATED.

UNTIAH ENGINEERING & LAND SURVEYING

85 SOUTH 200 EAST - VERNAL, UTAH 84078
(435) 789-1017

SCALE 1" = 1000'
DATE SURVEYED: 02-03-10
DATE DRAWN: 02-11-10

PARTY B.H. J.M. C.C.
REFERENCES G.L.O. PLAT

WEATHER COLD

FILE EOG RESOURCES, INC.