

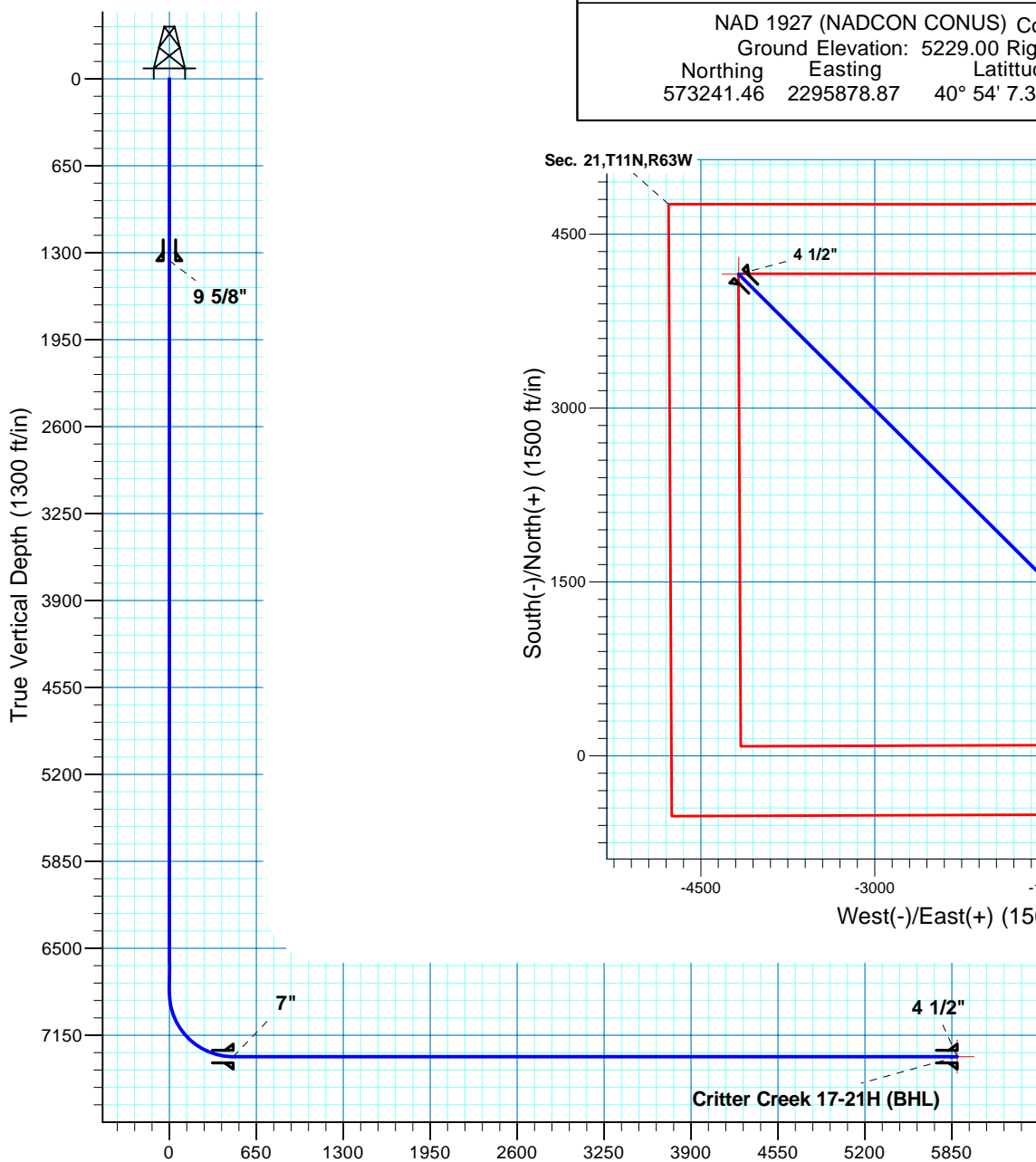
Critter Creek 17-21H

Section 21 T11N R63W
Weld County, CO



Surface Location

NAD 1927 (NADCON CONUS) Colorado North 501
Ground Elevation: 5229.00 Rig @ 5254.00ft
Northing Easting Latitude Longitude
573241.46 2295878.87 40° 54' 7.358 N 104° 25' 46.970 W



Vertical Section at 314.87deg (1300 ft/in)

T M
Azimuths to True North
Magnetic North: 8.88°

Magnetic Field
Strength: 53595.9snT
Dip Angle: 67.57°
Date: 12/31/2009
Model: IGRF200510

Project: DJ - Hereford Ranch
Site: Critter Creek 17-21H
Well: Critter Creek 17-21H
Plan: APD Directional Plan

SECTION DETAILS

Sec	MD	Inc	Azi	TVD	+N/-S	+E/-W	DLeg	TFace	VSec	Target
1	0.00	0.00	0.00	0.00	0.00	0.00	0.00	0.00	0.00	
2	6832.53	0.00	0.00	6832.53	0.00	0.00	0.00	0.00	0.00	
3	7582.54	90.00	314.87	7310.00	336.87	-338.37	12.00	314.87	477.47	
4	12995.78	90.00	314.87	7310.00	4156.09	-4174.60	0.00	0.00	5890.71	Critter Creek 17-21H (BHL)

TARGET DETAILS

Name	TVD	+N/-S	+E/-W	Northing	Easting	Latitude	Longitude	Shape
Critter Creek 17-21H (BHL)	7310.00	4156.09	-4174.60	577346.86	2291654.41	40° 54' 48.420 N	104° 26' 41.341 W	Point