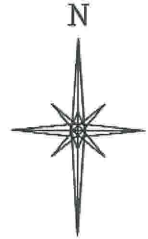


R. 97 W.



SCALE 1" = 1000'

T. 6 S.

SHL

LATITUDE (NAD 83)

NORTH 39.529566 DEG.

LONGITUDE (NAD 83)

WEST 108.213084 DEG.

NORTHING (NAD 27)

629189.19

EASTING (NAD 27)

1235006.02

BASIS OF BEARING/DATUM

SPCS CO CENTRAL NAD 27
BASED ON NGS TRIANGULATION
STATION "SHALE"

THE BASIS OF BEARINGS FOR
THIS SURVEY IS THE NORTH
LINE OF THE NW ¼ OF
SECTION 15, MONUMENTED BY
GLO BC'S AND BEARING
N 88° 13' 57" W.

LEGEND

◆ WELL LOCATION

L DENOTES 90° TIE

● FOUND MONUMENT

NOTES

1. GPS OPERATOR JOHN RICHARDSON
OBSERVED A PDOP OF 1.3.

2. ALL GPS OBSERVATIONS ARE IN
COMPLIANCE WITH COGCC RULE
No.215.

3. EXISTING IMPROVEMENTS WITHIN
400' OF LOCATION. SEE EXHIBIT 2D.

4. SURROUNDING SURFACE USE IS
GRAZING, NON CROP & RANGELAND.

CASCADE CREEK

697-10-42B

AS CONSTRUCTED PAD

ELEVATION: 8347.0'

BASIS OF ELEVATION: USGS
STATION SHALE. LOCATED IN THE
SW 1/4 SEC. 13, T 7 S, R 97 W
ELEVATION = 8949'

15

DRG AC
PLS 37065

1000 500 0 1000 2000

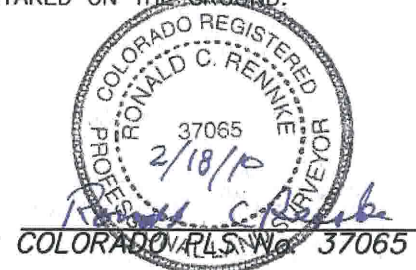
SCALE FEET

SURVEYOR'S STATEMENT

I, RONALD C. RENNKE, AN EMPLOYEE AND AGENT ON BEHALF OF D.R. GRIFFIN & ASSOCIATES, INC. STATE
THE PLAT HEREON IS A CORRECT REPRESENTATION OF A SURVEY MADE UNDER MY SUPERVISION ON
DECEMBER 23, 2009 OF THE SHOWN CASCADE CREEK 697-10-42B AS STAKED ON THE GROUND.

Notice: In accordance with Colorado State Law, any legal
action based upon any defect in this survey plat must
commence within three (3) years after first discovery of
such defect. In no event, may any action based upon any
defect in this survey plat be commenced more than ten
(10) years from the date of certification shown hereon.

697-15-01 PAD



RIFFIN & ASSOCIATES, INC.
1414 ELK ST., ROCK SPRINGS, WY 82901

(307) 362-6028

DRAWN: 2/16/2010 - DEH

SCALE: 1" = 1000'

REVISED: N/A

DRG JOB No. 10845

EXHIBIT 1

PLAT OF DRILLING LOCATION FOR

OXY USA WTP LP

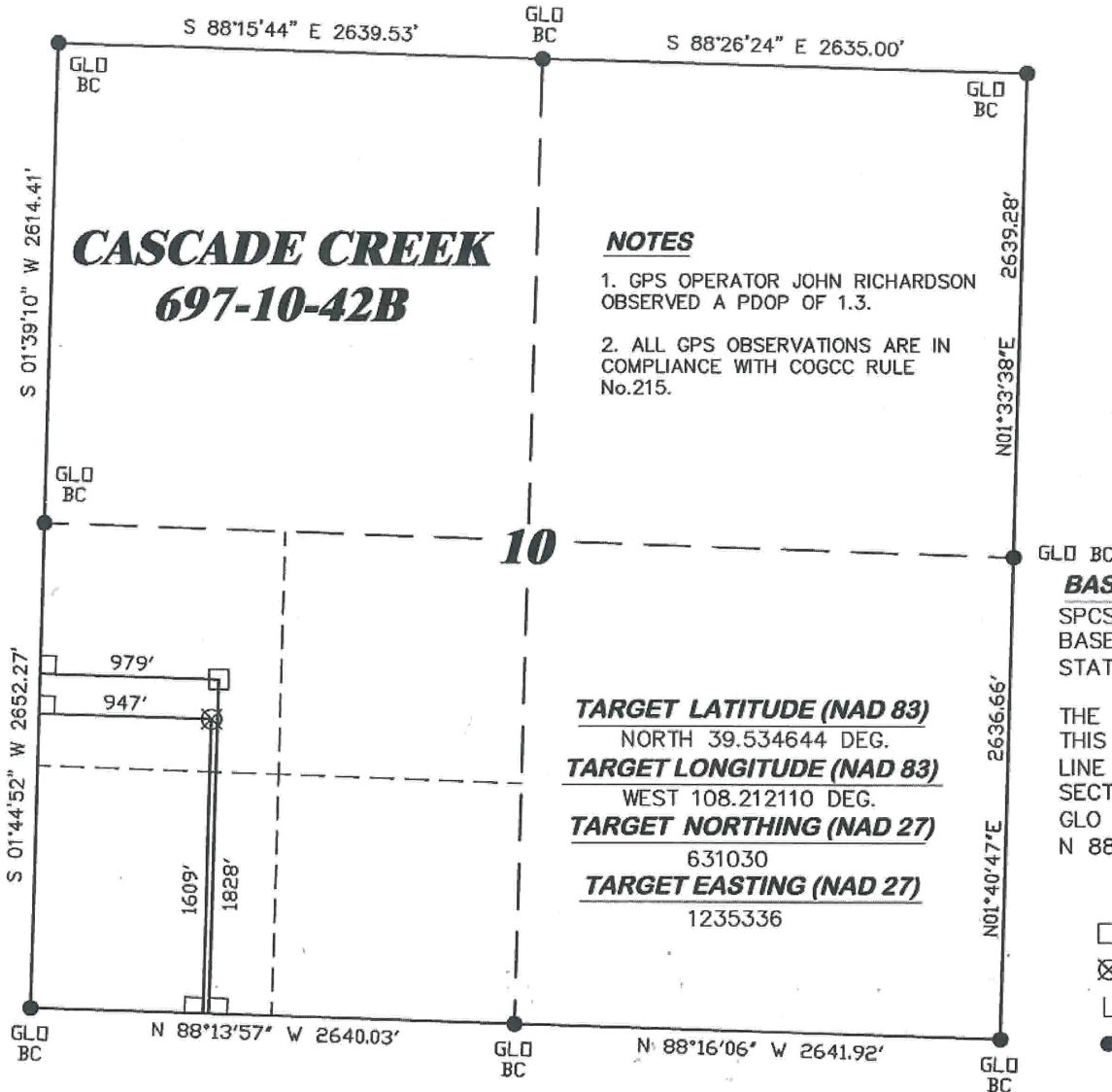
SHL IN NWNW SECTION 15

241' F/NL & 673' F/WL, SECTION 15,

T. 6 S., R. 97 W., 6th P.M.

GARFIELD COUNTY, COLORADO

R. 97 W.



SCALE 1" = 1000'

T. 6 S.

BHL

LATITUDE (NAD 83)
NORTH 39.535245 DEG.
LONGITUDE (NAD 83)
WEST 108.211995 DEG.
NORTHING (NAD 27)
631248
EASTING (NAD 27)
1235375

BASIS OF BEARING/DATUM
SPCS CO CENTRAL NAD 27
BASED ON NGS TRIANGULATION
STATION "SHALE"

THE BASIS OF BEARINGS FOR
THIS SURVEY IS THE NORTH
LINE OF THE NW ¼ OF
SECTION 15, MONUMENTED BY
GLO BC'S AND BEARING
N 88° 13' 57" W.

LEGEND

- ☐ APPROXIMATE BHL
- ☒ TARGET LOCATION
- L DENOTES 90° TIE
- FOUND MONUMENT

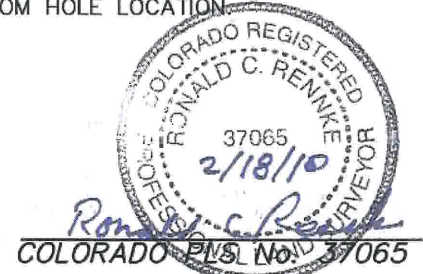


SURVEYOR'S STATEMENT

I, RONALD C. RENNKE, AN EMPLOYEE AND AGENT ON BEHALF OF D.R. GRIFFIN & ASSOCIATES, INC. STATE THE PLAT HEREON IS A CORRECT REPRESENTATION OF A SURVEY MADE UNDER MY SUPERVISION ON DECEMBER 23, 2009 OF THE SHOWN CASCADE CREEK 697-10-42B BOTTOM HOLE LOCATION.

Notice: In accordance with Colorado State Law, any legal action based upon any defect in this survey plat must commence within three (3) years after first discovery of such defect. In no event, may any action based upon any defect in this survey plat be commenced more than ten (10) years from the date of certification shown hereon.

697-15-01 PAD



DRG RIFFIN & ASSOCIATES, INC.
(307) 362-5028 1414 ELK ST., ROCK SPRINGS, WY 82901

DRAWN: 2/16/2010 - DEH

SCALE: 1" = 1000'

REVISED: N/A

DRG JOB No. 10845

EXHIBIT 1

**PLAT OF BOTTOM HOLE LOCATION FOR
OXY USA WTP LP
SHL IN NWNW SECTION 15**

**BHL 1828' F/SL & 979' F/WL, SECTION 10,
T. 6 S., R. 97 W., 6th P.M.
GARFIELD COUNTY, COLORADO**