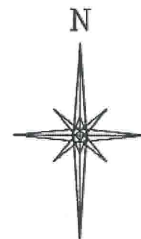


R. 97 W.



SCALE 1" = 1000'

T. 6 S.

SHL

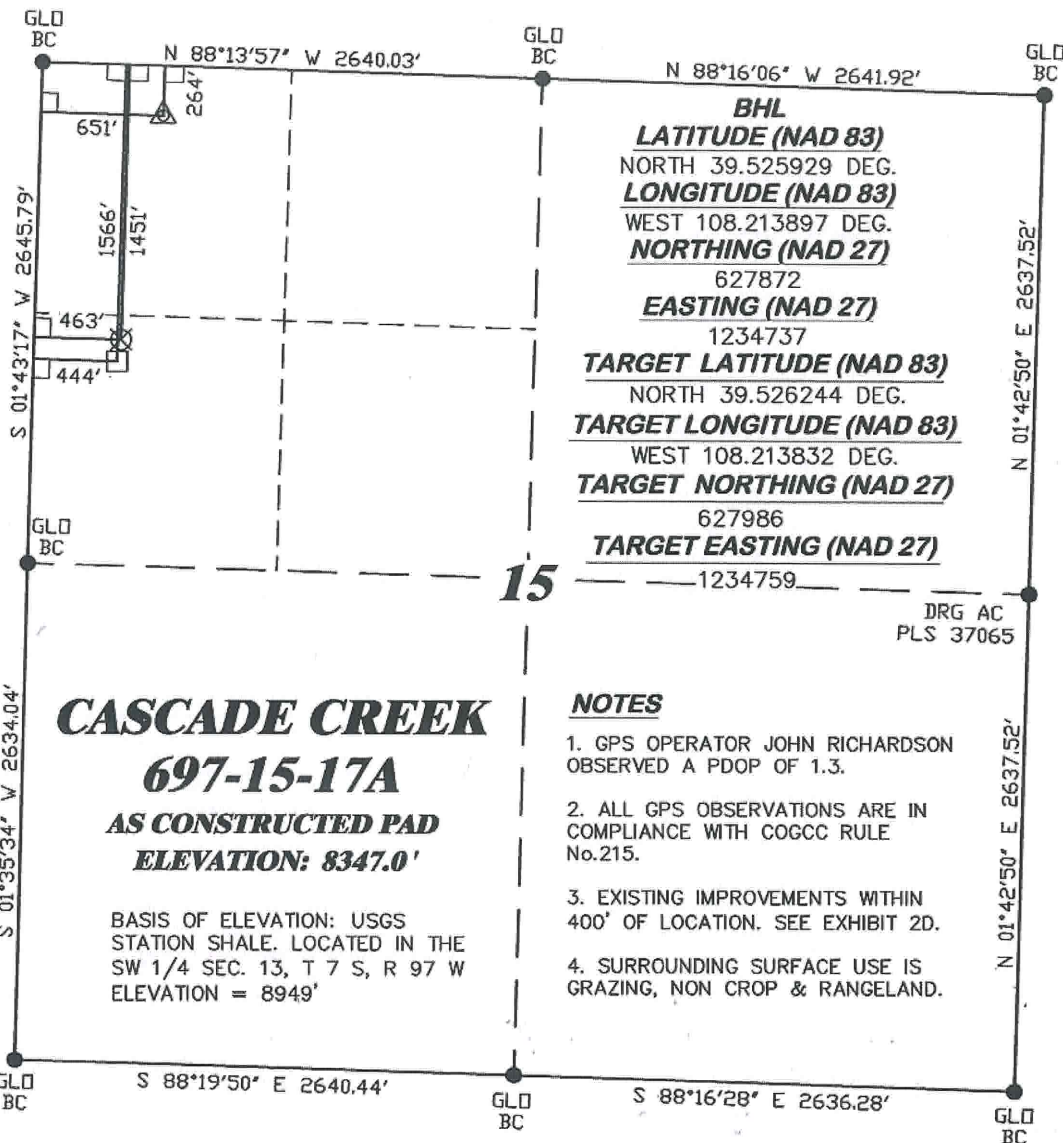
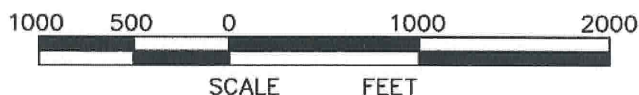
LATITUDE (NAD 83)
NORTH 39.529503 DEG.
LONGITUDE (NAD 83)
WEST 108.213163 DEG.
NORTHING (NAD 27)
629167.16
EASTING (NAD 27)
1234983.28

BASIS OF BEARING/DATUM
SPCS CO CENTRAL NAD 27
BASED ON NGS TRIANGULATION
STATION "SHALE"

THE BASIS OF BEARINGS FOR
THIS SURVEY IS THE NORTH
LINE OF THE NW 1/4 OF
SECTION 15, MONUMENTED BY
GLO BC'S AND BEARING
N 88° 13' 57" W.

LEGEND

- △ AS-DRILLED CONDUCTOR
- APPROXIMATE BHL
- ⊗ TARGET LOCATION
- └ DENOTES 90° TIE
- FOUND MONUMENT



NOTES

1. GPS OPERATOR JOHN RICHARDSON
OBSERVED A PDOP OF 1.3.
2. ALL GPS OBSERVATIONS ARE IN
COMPLIANCE WITH COGCC RULE
No.215.
3. EXISTING IMPROVEMENTS WITHIN
400' OF LOCATION. SEE EXHIBIT 2D.
4. SURROUNDING SURFACE USE IS
GRAZING, NON CROP & RANGELAND.

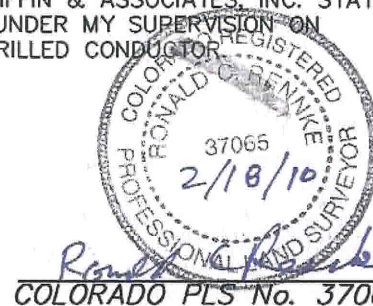
DRG AC
PLS 37065

SURVEYOR'S STATEMENT

I, RONALD C. RENNKE, AN EMPLOYEE AND AGENT ON BEHALF OF D.R. GRIFFIN & ASSOCIATES, INC. STATE
THE PLAT HEREON IS A CORRECT REPRESENTATION OF A SURVEY MADE UNDER MY SUPERVISION ON
DECEMBER 23, 2009 OF THE SHOWN CASCADE CREEK 697-15-17A AS DRILLED CONDUCTOR.

Notice: In accordance with Colorado State Law, any legal
action based upon any defect in this survey plat must
commence within three (3) years after first discovery of
such defect. In no event, may any action based upon any
defect in this survey plat be commenced more than ten
(10) years from the date of certification shown hereon.

697-15-01 PAD



COLORADO PLS No. 37065



RIFFIN & ASSOCIATES, INC.
1414 ELK ST., ROCK SPRINGS, WY 82901

(307) 362-5028

DRAWN: 2/16/2010 - DEH

SCALE: 1" = 1000'

REVISED: N/A

DRG JOB No. 10845

EXHIBIT 1

**PLAT OF AS DRILLED CONDUCTOR FOR
OXY USA WTP LP
SHL IN NWNW SECTION 15**

**264' F/NL & 651' F/WL, SECTION 15,
T. 6 S., R. 97 W., 6th P.M.
GARFIELD COUNTY, COLORADO**