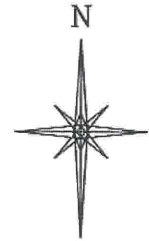


R. 97 W.



SCALE 1" = 1000'

T. 6 S.

SHL

LATITUDE (NAD 83)
NORTH 39.529541 DEG.
LONGITUDE (NAD 83)
WEST 108.213068 DEG.
NORTHING (NAD 27)
629180.27
EASTING (NAD 27)
1235010.26

BASIS OF BEARING/DATUM
SPCS CO CENTRAL NAD 27
BASED ON NGS TRIANGULATION
STATION "SHALE"

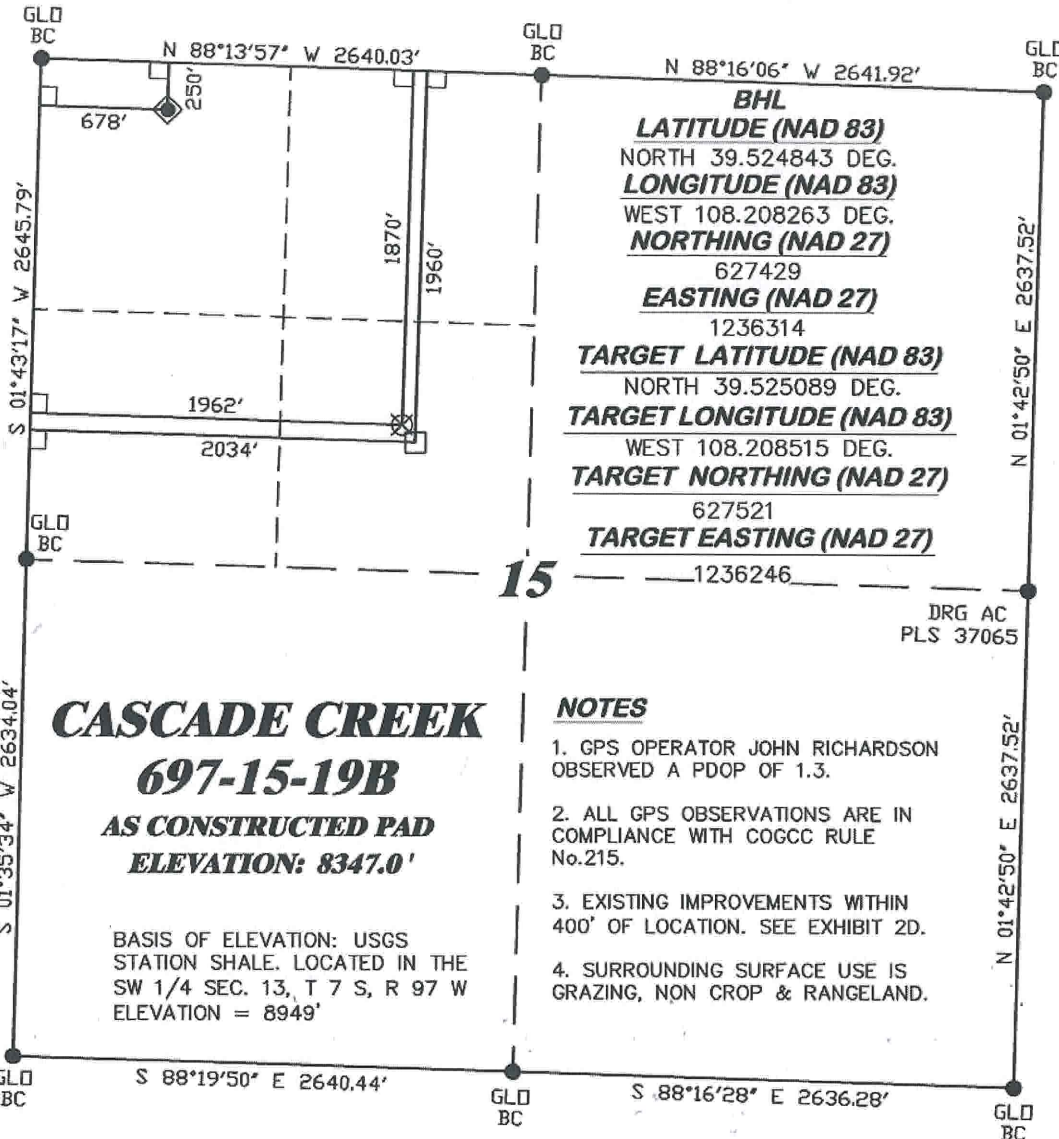
THE BASIS OF BEARINGS FOR
THIS SURVEY IS THE NORTH
LINE OF THE NW 1/4 OF
SECTION 15, MONUMENTED BY
GLO BC'S AND BEARING
N 88° 13' 57" W.

LEGEND

- ◆ WELL LOCATION
- APPROXIMATE BHL
- ⊗ TARGET LOCATION
- └ DENOTES 90° TIE
- FOUND MONUMENT

1000 500 0 1000 2000

SCALE FEET



NOTES

1. GPS OPERATOR JOHN RICHARDSON OBSERVED A PDOP OF 1.3.
2. ALL GPS OBSERVATIONS ARE IN COMPLIANCE WITH COGCC RULE No.215.
3. EXISTING IMPROVEMENTS WITHIN 400' OF LOCATION. SEE EXHIBIT 2D.
4. SURROUNDING SURFACE USE IS GRAZING, NON CROP & RANGELAND.

DRG AC
PLS 37065

SURVEYOR'S STATEMENT

I, RONALD C. RENNKE, AN EMPLOYEE AND AGENT ON BEHALF OF D.R. GRIFFIN & ASSOCIATES, INC. STATE THE PLAT HEREON IS A CORRECT REPRESENTATION OF A SURVEY MADE UNDER MY SUPERVISION ON DECEMBER 23, 2009 OF THE SHOWN CASCADE CREEK 697-15-19B AS STAKED ON THE GROUND.

Notice: In accordance with Colorado State Law, any legal action based upon any defect in this survey plat must commence within three (3) years after first discovery of such defect. In no event, may any action based upon any defect in this survey plat be commenced more than ten (10) years from the date of certification shown hereon.

697-15-01 PAD

PROFESSIONAL SURVEYOR
RONALD C. RENNKE
37065
2/18/10
COLORADO PLS No. 37065



RIFFIN & ASSOCIATES, INC.
1414 ELK ST., ROCK SPRINGS, WY 82901

(307) 362-5028

DRAWN: 2/16/2010 - DEH

SCALE: 1" = 1000'

REVISED: N/A

DRG JOB No. 10845

EXHIBIT 1

**PLAT OF DRILLING LOCATION FOR
OXY USA WTP LP
SHL IN NWNW SECTION 15**

**250' F/NL & 678' F/WL, SECTION 15,
T. 6 S., R. 97 W., 6th P.M.
GARFIELD COUNTY, COLORADO**