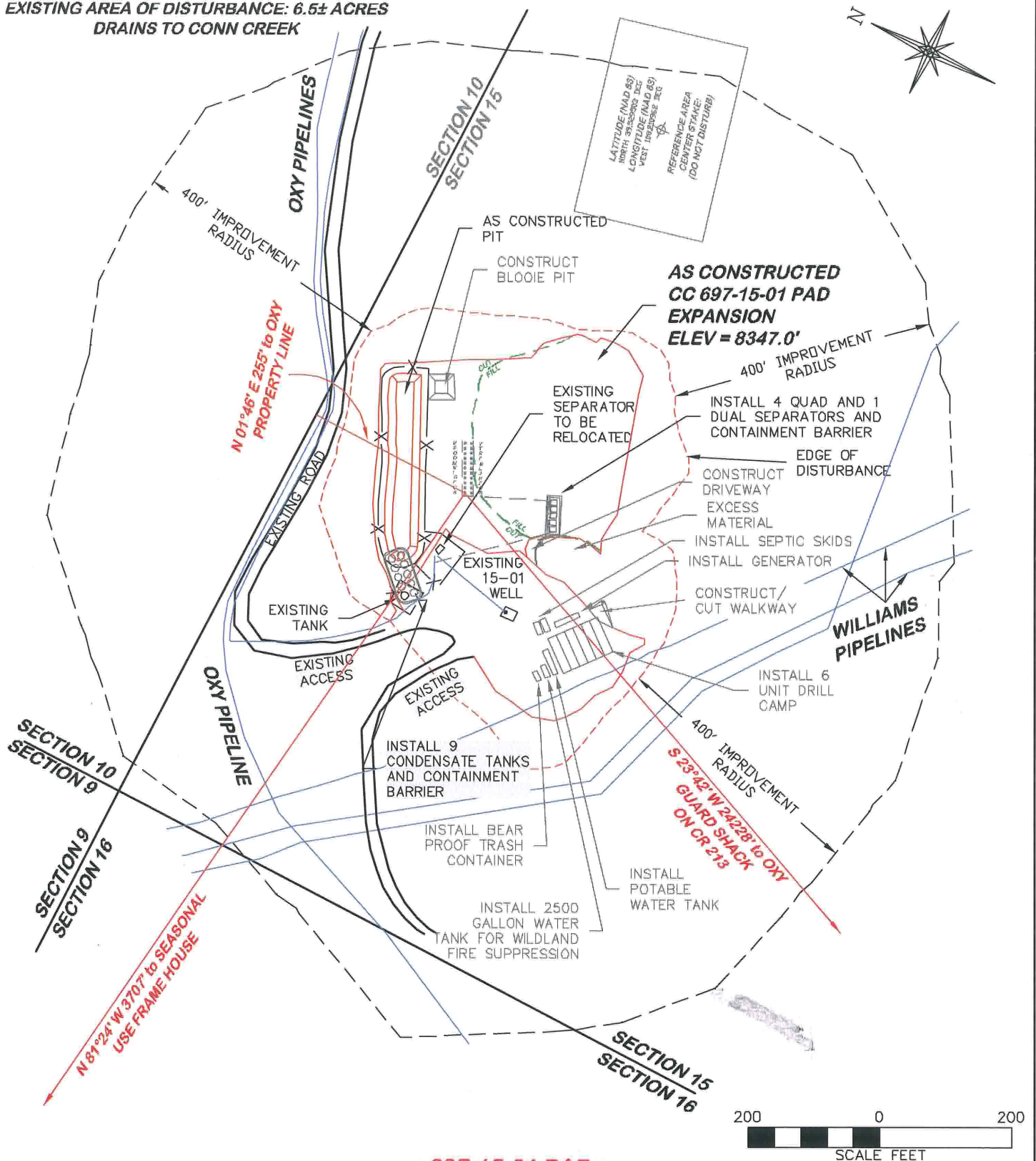


AS CONSTRUCTED ELEVATION: 8347.0'
 EXISTING AREA OF DISTURBANCE: 6.5± ACRES
 DRAINS TO CONN CREEK



697-15-01 PAD



RIFFIN & ASSOCIATES, INC.

(307) 362-5028

1414 ELK ST., ROCK SPRINGS, WY 82901

DRAWN: 2/16/2010 - DEH

SCALE: 1" = 200'

REVISED: N/A

DRG JOB No. 10845

EXHIBIT 2D

LOCATION DRAWING

OXY USA WTP LP

CC 697-09-56B, 64A, 697-10-50A, 50B, 58, 59, 42B, 42C,
 697-15-03A, 03B, 09B, 11A, 11B, 19A, 19B, 17A, 26, 28A,
 NWNW, SECTION 15, T. 6 S., R. 97 W., 6th P.M.,
 GARFIELD COUNTY, COLORADO