

Muti Well plan

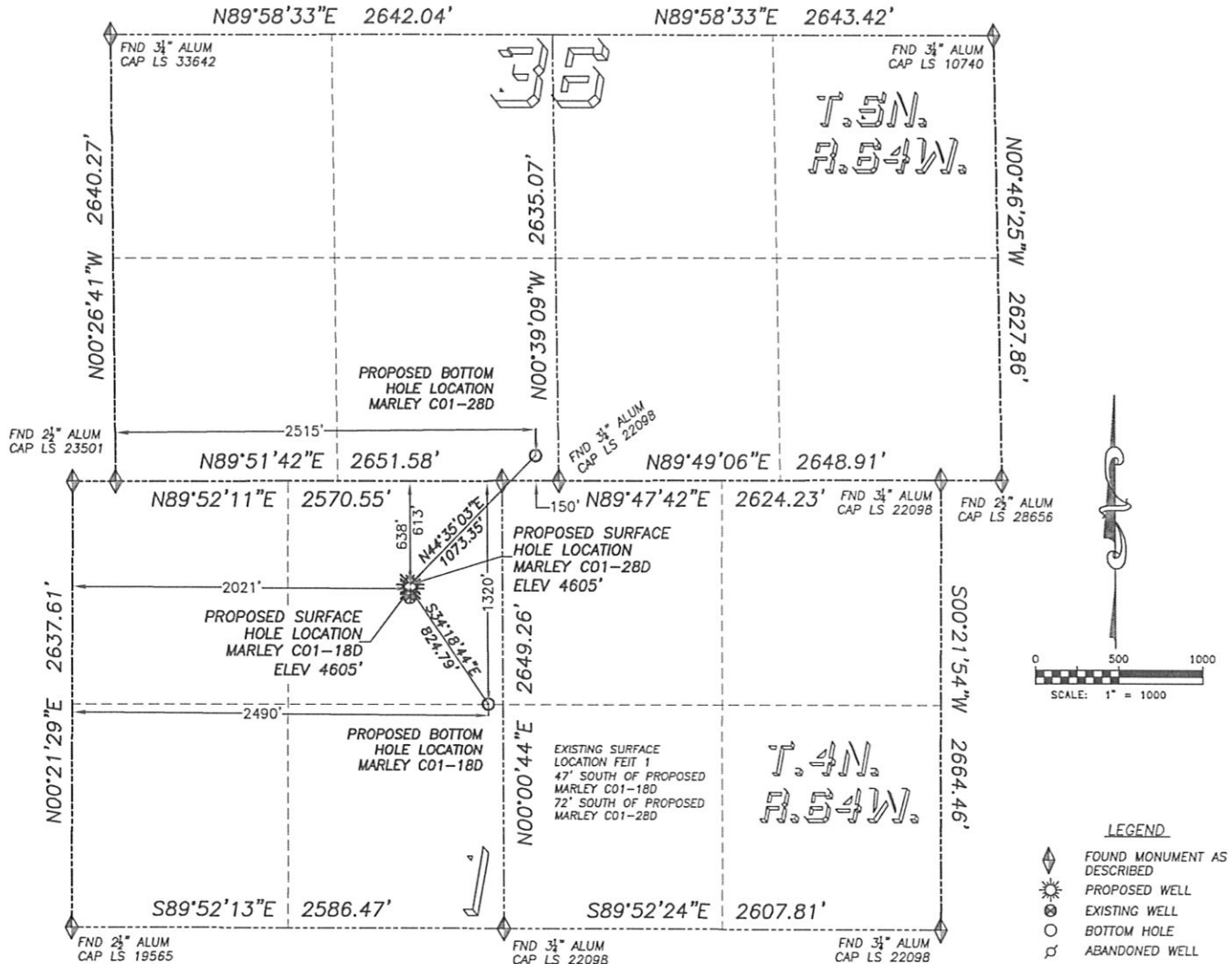
DALEY LAND SURVEYING, INC.

PARKER, CO. 80134

303 953 9841

DIRECTIONAL LAYOUT MARLEY C01-18D & MARLEY C01-28D

SECTION 1, TOWNSHIP 4 NORTH, RANGE 64 WEST OF THE 6TH PRINCIPAL MERIDIAN



NAD 83 LATITUDE AND LONGITUDE

MARLEY C01-18D SURFACE HOLE:

LATITUDE: N40.34691°
LONGITUDE: W104.50090°
ELEVATION: 4605'
PDOP 1.7
638' FNL, 2021' FWL

BOTTOM HOLE:

LATITUDE: N40.34504°
LONGITUDE: W104.49923°
1320' FNL, 2490' FWL

NEAREST EXISTING WELL:

FEIT 1 SURFACE HOLE
LATITUDE: N40.34678°
LONGITUDE: W104.50091°
ELEVATION: 4604'
47' SOUTH

NAD 83 LATITUDE AND LONGITUDE

MARLEY C01-28D SURFACE HOLE:

LATITUDE: N40.34698°
LONGITUDE: W104.50090°
ELEVATION: 4605'
PDOP 2.4
613' FNL, 2021' FWL

BOTTOM HOLE:

LATITUDE: N40.34908°
LONGITUDE: W104.49819°
150' FSL, 2515' FWL, S36, T5N, R64W

NEAREST EXISTING WELL:

FEIT 1 SURFACE HOLE
LATITUDE: N40.34678°
LONGITUDE: W104.50091°
ELEVATION: 4604'
72' SOUTH