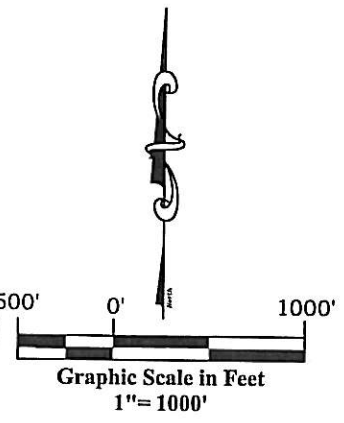
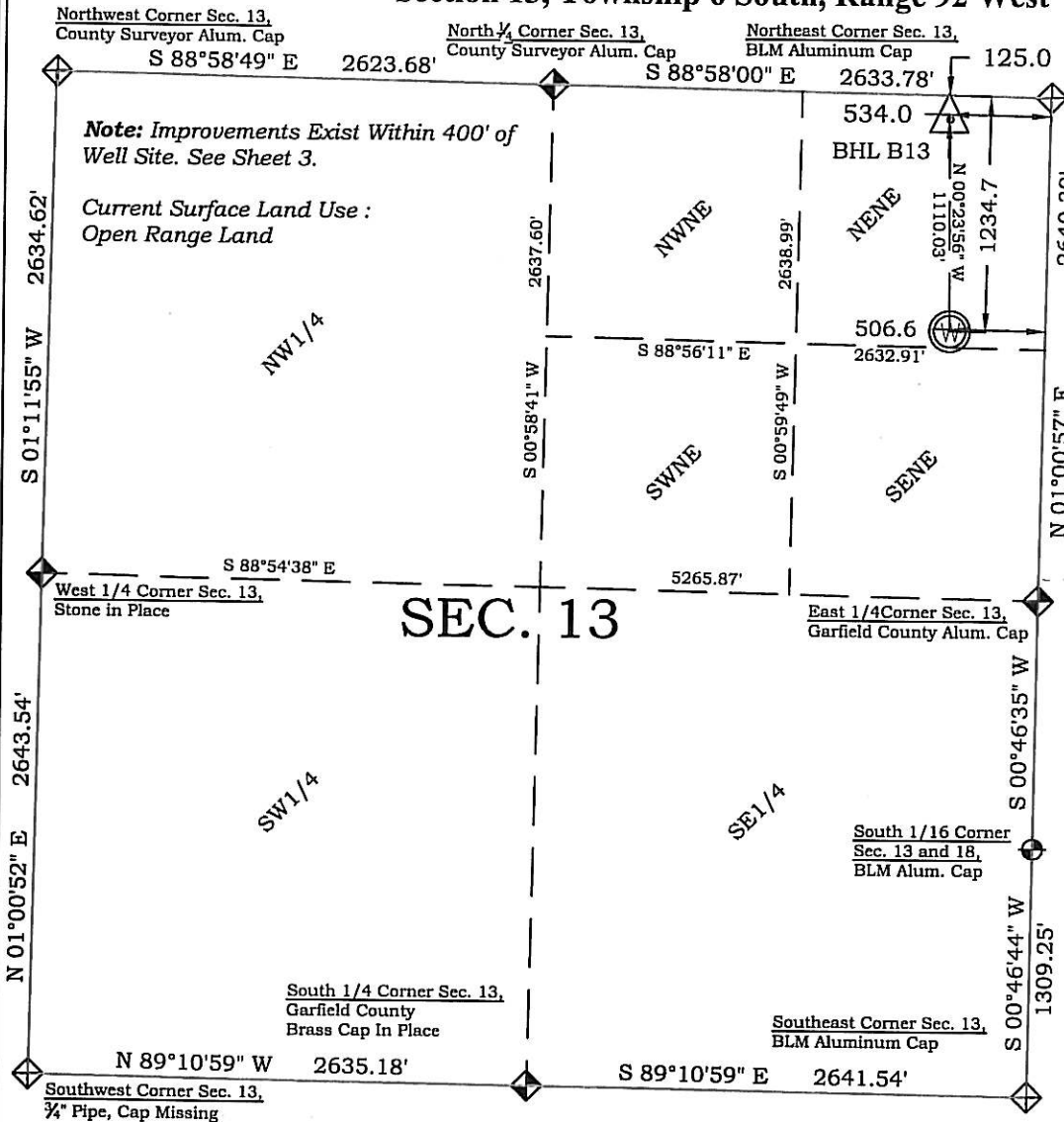


# Well Location Plat McLin B13

Section 13, Township 6 South, Range 92 West



## Legend

- ◆ - Field Surveyed Section Corner
- ◆ - Field Surveyed Quarter Corner
- ⊙ - Calculated Section Corner Location
- ⊙ - Field Surveyed 1/6 Corner

## Surface: McLin B13

1235' FNL  
507 FEL  
Gnd El= 5595.8  
Pad El= 5597.8  
**NAD83**  
Lat: 39.531077457°N  
Long: 107.608245849°W  
**NAD27**  
Lat: 39.531096847°N  
Long: 107.607632722°W  
UTM 13 NORTH  
NAD 1983  
NORTHING  
14366645.787  
EASTING  
904954.363

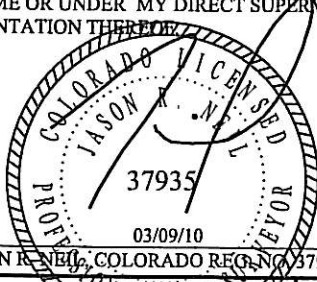
## Bottom Hole: McLin B13

125' FNL  
534' FEL  
**NAD83**  
Lat: 39.534122210°N  
Long: 107.608387273°W  
**NAD27**  
Lat: 39.534141600°N  
Long: 107.607774100°W

Prepared For Antero Resources  
Proposed McLin B13 Well Situate in The NE1/4NE1/4 Section  
13, Township 6 South, Range 92 West of the 6 th. Principal  
Meridian, County of Garfield, State of Colorado

## SURVEYOR'S CERTIFICATE

I, JASON R. NEIL, A REGISTERED LAND SURVEYOR, LICENSED UNDER THE LAWS OF THE STATE OF COLORADO DO HEREBY CERTIFY THAT THE SURVEY SHOWN HEREON WAS PREPARED BY RIVER VALLEY SURVEY, INC., FOR ANTERO RESOURCES, BY ME OR UNDER MY DIRECT SUPERVISION AND THAT THIS PLAT IS A TRUE REPRESENTATION THEREOF.



BY: JASON R. NEIL, COLORADO REG. NO. 37935  
03/09/10

## Notes:

1. LATITUDE AND LONGITUDE COORDINATES ARE DIFFERENTIALLY CORRECTED AND BASED ON PUBLISHED NGS CONTROL STATION "WDP-5". SYSTEM: UTM ZONE: 13 NORTH DATUM: NAD 1983 (CONUS)
2. ELEVATIONS ARE BASED ON NAVD OF 1983.
3. ALL BOTTOM AND TOP HOLE LOCATIONS ARE MEASURED 90 DEGREES FROM SECTION LINE.
4. USGS QUADRANGLE MAP "SILT".
5. CURRENT SURFACE LAND USE: HAY FIELD.
6. PDOP AT THE TIME OF LOCATION OF SURFACE WELL = 2.4



River Valley Survey, Inc.  
110 East 3rd. Street, Suite 213  
Rifle, Colorado 81650  
Ph: 970-379-7846

Project: McLin B PAD

Field Date: 01-19-10

Date: 02-27-10

Scale: 1"= 1000'

Sheet: 1 of 9

Well Location Plat  
Prepared For Antero Resources

Situate In:  
NE1/4 Section 13, T6S., R. 92 W. of the  
6th P.M., Garfield County, Colorado

