

Steil Surveying Services, LLC

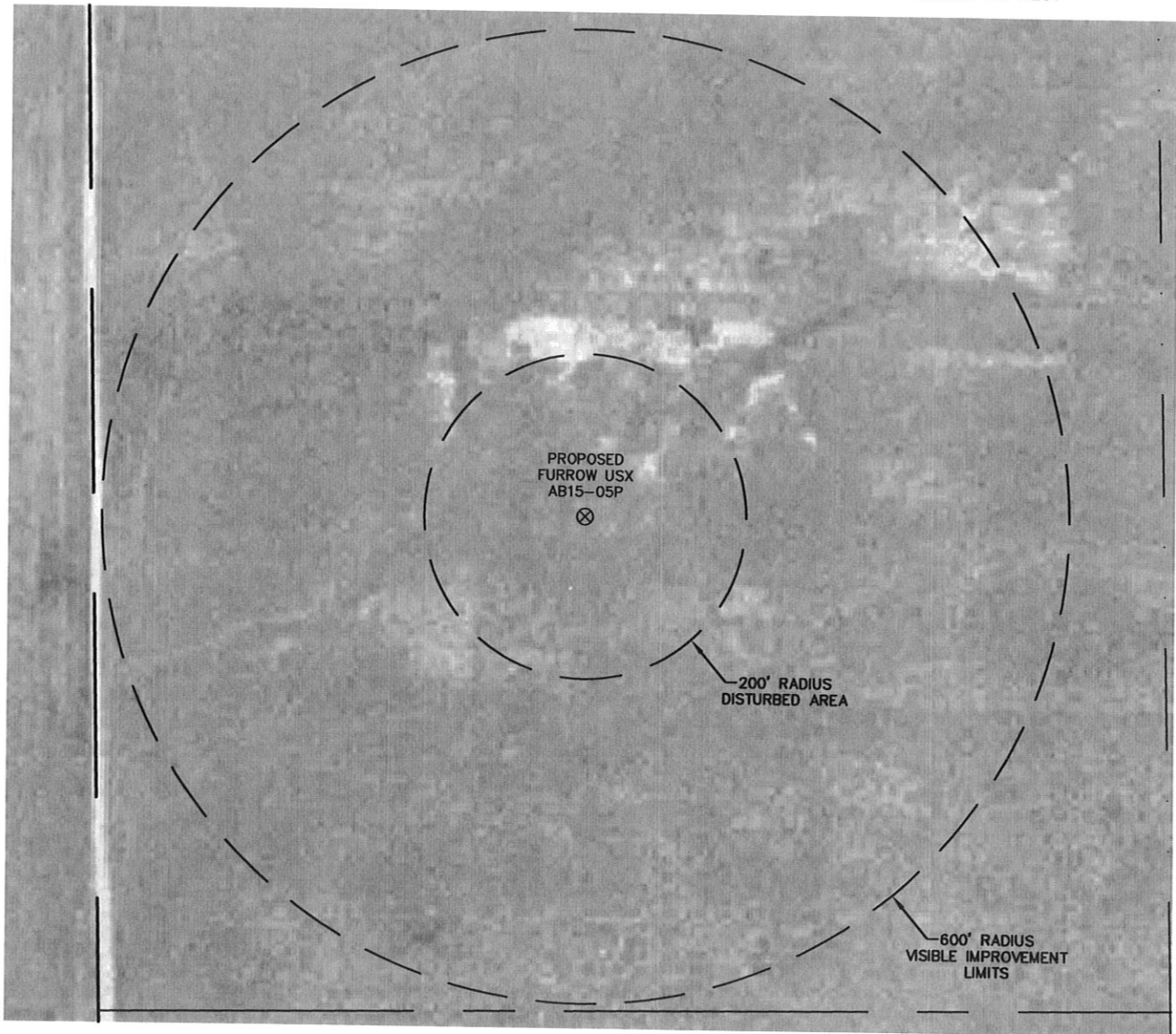
1102 West 19th Street P.O. BOX 2073

Cheyenne, Wyoming 82009

VISIBLE IMPROVEMENTS

THIS MAP DOES NOT REPRESENT A BOUNDARY SURVEY

SECTION 15
TOWNSHIP 7 NORTH
RANGE 64 WEST



THERE ARE NO VISIBLE IMPROVEMENTS WITHIN 600'.

THE NEAREST OVERHEAD POWER LINE IS 7300'+/- TO THE NORTH.

NOTICE: According to Colorado law you MUST commence any legal action based upon any defect in this W.L.C. within three years after you first discover such defect. In no event may any action based upon any defect in this W.L.C. be commenced more than ten years from this sold date of the certification shown hereon.



0 200

Scale: 1" = 200'