

**EOG RESOURCES, INC.**  
**CRITTER CREEK #22-27H**  
LOCATED IN WELD COUNTY, COLORADO  
SECTION 27, T11N, R63W, 6th P.M.

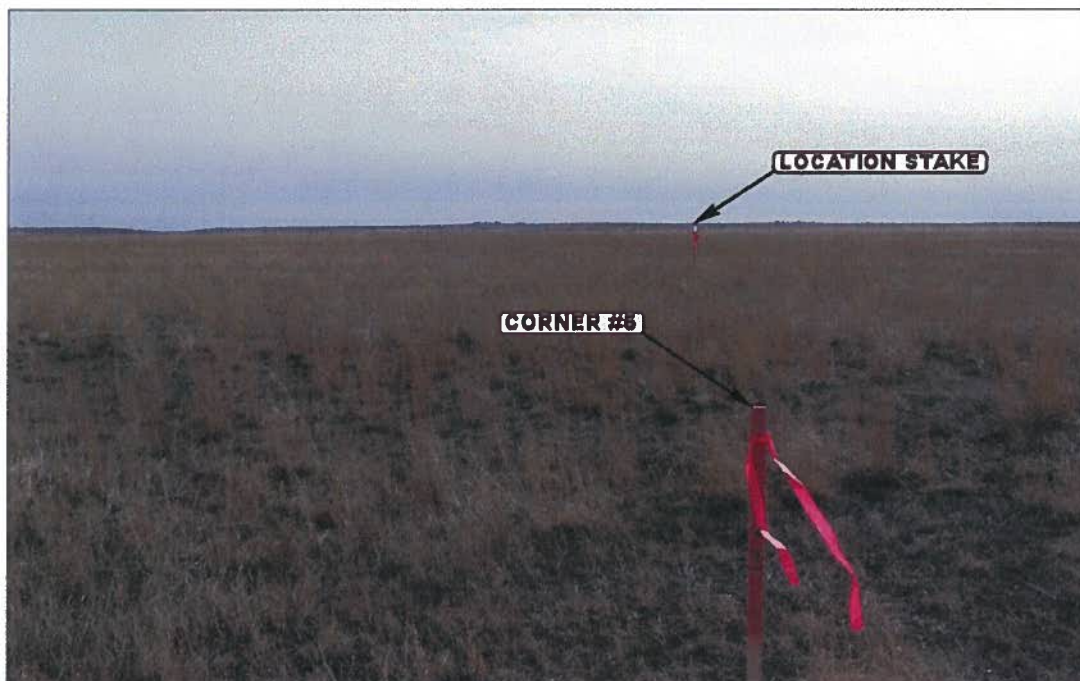


PHOTO: VIEW FROM CORNER #5 TO LOCATION STAKE

CAMERA ANGLE: SOUTHERLY



PHOTO: VIEW FROM BEGINNING OF PROPOSED ACCESS

CAMERA ANGLE: EASTERLY



- Since 1964 -

**UELS**

Uintah Engineering & Land Surveying  
85 South 200 East Vernal, Utah 84078  
435-789-1017 FAX (435) 789-1813

**LOCATION PHOTOS**

**02** **19** **10**  
MONTH DAY YEAR

TAKEN BY: B.H.

DRAWN BY: Z.L.

REVISED: 00-00-00

PHOTO  
**P1**

**EOG RESOURCES, INC.**  
**CRITTER CREEK #22-27H**  
LOCATED IN WELD COUNTY, COLORADO  
SECTION 27, T11N, R63W, 6th P.M.



PHOTO: VIEW OF LOCATION STAKE

CAMERA ANGLE: NORTHERLY



PHOTO: VIEW OF LOCATION STAKE

CAMERA ANGLE: EASTERLY



**UELS**

Uintah Engineering & Land Surveying  
85 South 200 East Vernal, Utah 84078  
435-789-1017 FAX (435) 789-1813

**LOCATION PHOTOS**

**02 19 10**  
MONTH DAY YEAR

TAKEN BY: B.H.

DRAWN BY: Z.L.

REVISED: 00-00-00

**PHOTO**  
**P2**



**EOG RESOURCES, INC.**  
**CRITTER CREEK #22-27H**  
LOCATED IN WELD COUNTY, COLORADO  
SECTION 27, T11N, R63W, 6th P.M.

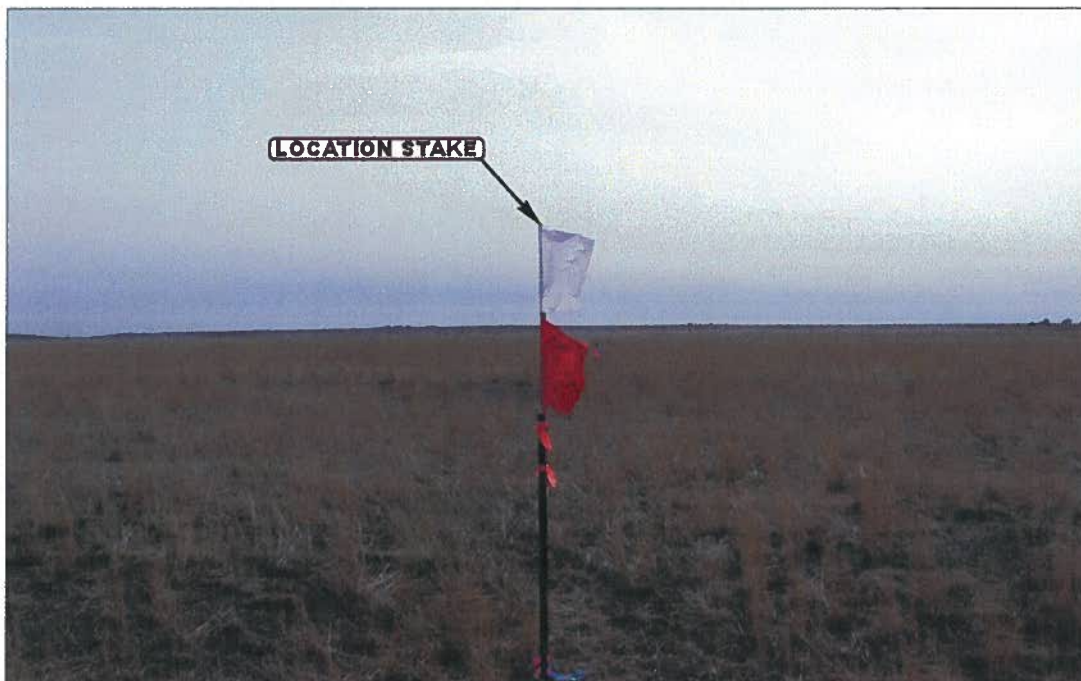


PHOTO: VIEW OF LOCATION STAKE

CAMERA ANGLE: SOUTHERLY



PHOTO: VIEW OF LOCATION STAKE

CAMERA ANGLE: WESTERLY



- Since 1964 -



Uintah Engineering & Land Surveying  
85 South 200 East Vernal, Utah 84078  
435-789-1017 FAX (435) 789-1813

**LOCATION PHOTOS**

**02 19 10**  
MONTH DAY YEAR

**PHOTO**

**P3**

TAKEN BY: B.H.

DRAWN BY: Z.L.

REVISED: 00-00-00