

# **BILL BARRETT CORP**

**GARFIELD COUNTY, COLORADO NAD 1983**

**Kaufman Pad #1 NESW-25-692**

**Kaufman 22B-25-692**

**Wellbore #1**

**Plan: Design #1**

## **Standard Planning Report**

**16 March, 2010**

# BBC

## Planning Report

<b>Database:</b>	Compass	<b>Local Co-ordinate Reference:</b>	Well Kaufman 22B-25-692
<b>Company:</b>	BILL BARRETT CORP	<b>TVD Reference:</b>	WELL @ 5936.00ft (Original Well Elev)
<b>Project:</b>	GARFIELD COUNTY, COLORADO NAD 1983	<b>MD Reference:</b>	WELL @ 5936.00ft (Original Well Elev)
<b>Site:</b>	Kaufman Pad #1 NESW-25-692	<b>North Reference:</b>	True
<b>Well:</b>	Kaufman 22B-25-692	<b>Survey Calculation Method:</b>	Minimum Curvature
<b>Wellbore:</b>	Wellbore #1		
<b>Design:</b>	Design #1		

<b>Project</b>	GARFIELD COUNTY, COLORADO NAD 1983		
<b>Map System:</b>	US State Plane 1983	<b>System Datum:</b>	Mean Sea Level
<b>Geo Datum:</b>	North American Datum 1983		
<b>Map Zone:</b>	Colorado Central Zone		

<b>Site</b>	Kaufman Pad #1 NESW-25-692		
<b>Site Position:</b>		<b>Northing:</b>	1,612,955.301 ft
<b>From:</b>	Lat/Long	<b>Easting:</b>	2,402,300.892 ft
<b>Position Uncertainty:</b>	0.00 ft	<b>Slot Radius:</b>	"
		<b>Latitude:</b>	39° 29' 49.949 N
		<b>Longitude:</b>	107° 37' 5.6028 W
		<b>Grid Convergence:</b>	-1.34 °

<b>Well</b>	Kaufman 22B-25-692		
<b>Well Position</b>	<b>+N/-S</b>	-72.49 ft	<b>Northing:</b>
	<b>+E/-W</b>	-234.22 ft	<b>Easting:</b>
<b>Position Uncertainty</b>		0.00 ft	<b>Wellhead Elevation:</b>
			ft
			<b>Latitude:</b>
			39° 29' 49.232 N
			<b>Longitude:</b>
			107° 37' 8.5908 W
			<b>Ground Level:</b>
			0.00 ft

<b>Wellbore</b>	Wellbore #1				
<b>Magnetics</b>	<b>Model Name</b>	<b>Sample Date</b>	<b>Declination (°)</b>	<b>Dip Angle (°)</b>	<b>Field Strength (nT)</b>
	BGGM2007	3/16/2010	10.40	65.83	52,403

<b>Design</b>	Design #1			
<b>Audit Notes:</b>				
<b>Version:</b>	<b>Phase:</b>	PROTOTYPE	<b>Tie On Depth:</b>	0.00
<b>Vertical Section:</b>	<b>Depth From (TVD) (ft)</b>	<b>+N/-S (ft)</b>	<b>+E/-W (ft)</b>	<b>Direction (°)</b>
	0.00	0.00	0.00	21.44

<b>Plan Sections</b>										
<b>Measured Depth (ft)</b>	<b>Inclination (°)</b>	<b>Azimuth (°)</b>	<b>Vertical Depth (ft)</b>	<b>+N/-S (ft)</b>	<b>+E/-W (ft)</b>	<b>Dogleg Rate (°/100ft)</b>	<b>Build Rate (°/100ft)</b>	<b>Turn Rate (°/100ft)</b>	<b>TFO (°)</b>	<b>Target</b>
0.00	0.00	0.00	0.00	0.00	0.00	0.00	0.00	0.00	0.00	
750.00	0.00	0.00	750.00	0.00	0.00	0.00	0.00	0.00	0.00	
1,464.05	17.85	21.44	1,452.56	102.70	40.34	2.50	2.50	0.00	21.44	
3,875.67	17.85	21.44	3,748.07	790.80	310.61	0.00	0.00	0.00	0.00	
5,065.76	0.00	0.00	4,919.00	961.97	377.85	1.50	-1.50	0.00	180.00	
7,565.76	0.00	0.00	7,419.00	961.97	377.85	0.00	0.00	0.00	0.00	Kaufman 22B-25-692

**BBC**  
Planning Report

<b>Database:</b>	Compass	<b>Local Co-ordinate Reference:</b>	Well Kaufman 22B-25-692
<b>Company:</b>	BILL BARRETT CORP	<b>TVD Reference:</b>	WELL @ 5936.00ft (Original Well Elev)
<b>Project:</b>	GARFIELD COUNTY, COLORADO NAD 1983	<b>MD Reference:</b>	WELL @ 5936.00ft (Original Well Elev)
<b>Site:</b>	Kaufman Pad #1 NESW-25-692	<b>North Reference:</b>	True
<b>Well:</b>	Kaufman 22B-25-692	<b>Survey Calculation Method:</b>	Minimum Curvature
<b>Wellbore:</b>	Wellbore #1		
<b>Design:</b>	Design #1		

Planned Survey									
Measured Depth (ft)	Inclination (°)	Azimuth (°)	Vertical Depth (ft)	+N/-S (ft)	+E/-W (ft)	Vertical Section (ft)	Dogleg Rate (°/100ft)	Build Rate (°/100ft)	Turn Rate (°/100ft)
0.00	0.00	0.00	0.00	0.00	0.00	0.00	0.00	0.00	0.00
100.00	0.00	0.00	100.00	0.00	0.00	0.00	0.00	0.00	0.00
200.00	0.00	0.00	200.00	0.00	0.00	0.00	0.00	0.00	0.00
300.00	0.00	0.00	300.00	0.00	0.00	0.00	0.00	0.00	0.00
400.00	0.00	0.00	400.00	0.00	0.00	0.00	0.00	0.00	0.00
500.00	0.00	0.00	500.00	0.00	0.00	0.00	0.00	0.00	0.00
600.00	0.00	0.00	600.00	0.00	0.00	0.00	0.00	0.00	0.00
700.00	0.00	0.00	700.00	0.00	0.00	0.00	0.00	0.00	0.00
750.00	0.00	0.00	750.00	0.00	0.00	0.00	0.00	0.00	0.00
9 5/8"									
800.00	1.25	21.44	800.00	0.51	0.20	0.55	2.50	2.50	0.00
900.00	3.75	21.44	899.89	4.57	1.79	4.91	2.50	2.50	0.00
1,000.00	6.25	21.44	999.50	12.68	4.98	13.62	2.50	2.50	0.00
1,100.00	8.75	21.44	1,098.64	24.83	9.75	26.67	2.50	2.50	0.00
1,200.00	11.25	21.44	1,197.11	40.99	16.10	44.04	2.50	2.50	0.00
1,300.00	13.75	21.44	1,294.74	61.13	24.01	65.68	2.50	2.50	0.00
1,400.00	16.25	21.44	1,391.32	85.22	33.47	91.56	2.50	2.50	0.00
1,464.05	17.85	21.44	1,452.56	102.70	40.34	110.34	2.50	2.50	0.00
1,500.00	17.85	21.44	1,486.77	112.96	44.37	121.36	0.00	0.00	0.00
1,600.00	17.85	21.44	1,581.96	141.49	55.58	152.01	0.00	0.00	0.00
1,700.00	17.85	21.44	1,677.14	170.02	66.78	182.67	0.00	0.00	0.00
1,800.00	17.85	21.44	1,772.33	198.56	77.99	213.32	0.00	0.00	0.00
1,900.00	17.85	21.44	1,867.51	227.09	89.20	243.98	0.00	0.00	0.00
2,000.00	17.85	21.44	1,962.70	255.62	100.40	274.63	0.00	0.00	0.00
2,100.00	17.85	21.44	2,057.89	284.15	111.61	305.29	0.00	0.00	0.00
2,200.00	17.85	21.44	2,153.07	312.69	122.82	335.94	0.00	0.00	0.00
2,300.00	17.85	21.44	2,248.26	341.22	134.03	366.60	0.00	0.00	0.00
2,400.00	17.85	21.44	2,343.44	369.75	145.23	397.25	0.00	0.00	0.00
2,500.00	17.85	21.44	2,438.63	398.28	156.44	427.91	0.00	0.00	0.00
2,600.00	17.85	21.44	2,533.81	426.82	167.65	458.56	0.00	0.00	0.00
2,700.00	17.85	21.44	2,629.00	455.35	178.85	489.22	0.00	0.00	0.00
2,800.00	17.85	21.44	2,724.18	483.88	190.06	519.87	0.00	0.00	0.00
2,900.00	17.85	21.44	2,819.37	512.42	201.27	550.53	0.00	0.00	0.00
3,000.00	17.85	21.44	2,914.56	540.95	212.48	581.18	0.00	0.00	0.00
3,100.00	17.85	21.44	3,009.74	569.48	223.68	611.84	0.00	0.00	0.00
3,200.00	17.85	21.44	3,104.93	598.01	234.89	642.49	0.00	0.00	0.00
3,300.00	17.85	21.44	3,200.11	626.55	246.10	673.15	0.00	0.00	0.00
3,400.00	17.85	21.44	3,295.30	655.08	257.31	703.80	0.00	0.00	0.00
3,500.00	17.85	21.44	3,390.48	683.61	268.51	734.45	0.00	0.00	0.00
3,556.22	17.85	21.44	3,444.00	699.65	274.81	751.69	0.00	0.00	0.00
Mesaverde									
3,600.00	17.85	21.44	3,485.67	712.14	279.72	765.11	0.00	0.00	0.00
3,700.00	17.85	21.44	3,580.85	740.68	290.93	795.76	0.00	0.00	0.00
3,800.00	17.85	21.44	3,676.04	769.21	302.13	826.42	0.00	0.00	0.00
3,875.67	17.85	21.44	3,748.07	790.80	310.61	849.62	0.00	0.00	0.00
3,900.00	17.49	21.44	3,771.25	797.67	313.31	857.00	1.50	-1.50	0.00
4,000.00	15.99	21.44	3,867.01	824.48	323.84	885.80	1.50	-1.50	0.00
4,100.00	14.49	21.44	3,963.49	848.94	333.45	912.08	1.50	-1.50	0.00
4,200.00	12.99	21.44	4,060.63	871.04	342.13	935.82	1.50	-1.50	0.00
4,300.00	11.49	21.44	4,158.35	890.77	349.88	957.01	1.50	-1.50	0.00
4,400.00	9.99	21.44	4,256.60	908.10	356.69	975.64	1.50	-1.50	0.00
4,458.21	9.11	21.44	4,314.00	917.09	360.22	985.30	1.50	-1.50	0.00
Price Coal									

# BBC

## Planning Report

<b>Database:</b>	Compass	<b>Local Co-ordinate Reference:</b>	Well Kaufman 22B-25-692
<b>Company:</b>	BILL BARRETT CORP	<b>TVD Reference:</b>	WELL @ 5936.00ft (Original Well Elev)
<b>Project:</b>	GARFIELD COUNTY, COLORADO NAD 1983	<b>MD Reference:</b>	WELL @ 5936.00ft (Original Well Elev)
<b>Site:</b>	Kaufman Pad #1 NESW-25-692	<b>North Reference:</b>	True
<b>Well:</b>	Kaufman 22B-25-692	<b>Survey Calculation Method:</b>	Minimum Curvature
<b>Wellbore:</b>	Wellbore #1		
<b>Design:</b>	Design #1		

### Planned Survey

Measured Depth (ft)	Inclination (°)	Azimuth (°)	Vertical Depth (ft)	+N/-S (ft)	+E/-W (ft)	Vertical Section (ft)	Dogleg Rate (°/100ft)	Build Rate (°/100ft)	Turn Rate (°/100ft)
4,500.00	8.49	21.44	4,355.30	923.04	362.56	991.69	1.50	-1.50	0.00
4,600.00	6.99	21.44	4,454.39	935.57	367.48	1,005.16	1.50	-1.50	0.00
4,700.00	5.49	21.44	4,553.79	945.68	371.45	1,016.02	1.50	-1.50	0.00
4,800.00	3.99	21.44	4,653.45	953.37	374.47	1,024.28	1.50	-1.50	0.00
4,890.70	2.63	21.44	4,744.00	958.24	376.38	1,029.51	1.50	-1.50	0.00
<b>Top Gas</b>									
4,900.00	2.49	21.44	4,753.29	958.62	376.53	1,029.92	1.50	-1.50	0.00
5,000.00	0.99	21.44	4,853.24	961.44	377.64	1,032.95	1.50	-1.50	0.00
5,065.76	0.00	0.00	4,919.00	961.97	377.85	1,033.52	1.50	-1.50	0.00
5,100.00	0.00	0.00	4,953.24	961.97	377.85	1,033.52	0.00	0.00	0.00
5,200.00	0.00	0.00	5,053.24	961.97	377.85	1,033.52	0.00	0.00	0.00
5,300.00	0.00	0.00	5,153.24	961.97	377.85	1,033.52	0.00	0.00	0.00
5,400.00	0.00	0.00	5,253.24	961.97	377.85	1,033.52	0.00	0.00	0.00
5,500.00	0.00	0.00	5,353.24	961.97	377.85	1,033.52	0.00	0.00	0.00
5,600.00	0.00	0.00	5,453.24	961.97	377.85	1,033.52	0.00	0.00	0.00
5,700.00	0.00	0.00	5,553.24	961.97	377.85	1,033.52	0.00	0.00	0.00
5,800.00	0.00	0.00	5,653.24	961.97	377.85	1,033.52	0.00	0.00	0.00
5,900.00	0.00	0.00	5,753.24	961.97	377.85	1,033.52	0.00	0.00	0.00
6,000.00	0.00	0.00	5,853.24	961.97	377.85	1,033.52	0.00	0.00	0.00
6,100.00	0.00	0.00	5,953.24	961.97	377.85	1,033.52	0.00	0.00	0.00
6,200.00	0.00	0.00	6,053.24	961.97	377.85	1,033.52	0.00	0.00	0.00
6,300.00	0.00	0.00	6,153.24	961.97	377.85	1,033.52	0.00	0.00	0.00
6,400.00	0.00	0.00	6,253.24	961.97	377.85	1,033.52	0.00	0.00	0.00
6,500.00	0.00	0.00	6,353.24	961.97	377.85	1,033.52	0.00	0.00	0.00
6,600.00	0.00	0.00	6,453.24	961.97	377.85	1,033.52	0.00	0.00	0.00
6,700.00	0.00	0.00	6,553.24	961.97	377.85	1,033.52	0.00	0.00	0.00
6,800.00	0.00	0.00	6,653.24	961.97	377.85	1,033.52	0.00	0.00	0.00
6,900.00	0.00	0.00	6,753.24	961.97	377.85	1,033.52	0.00	0.00	0.00
7,000.00	0.00	0.00	6,853.24	961.97	377.85	1,033.52	0.00	0.00	0.00
7,100.00	0.00	0.00	6,953.24	961.97	377.85	1,033.52	0.00	0.00	0.00
7,200.00	0.00	0.00	7,053.24	961.97	377.85	1,033.52	0.00	0.00	0.00
7,300.00	0.00	0.00	7,153.24	961.97	377.85	1,033.52	0.00	0.00	0.00
7,345.76	0.00	0.00	7,199.00	961.97	377.85	1,033.52	0.00	0.00	0.00
<b>Rollins</b>									
7,400.00	0.00	0.00	7,253.24	961.97	377.85	1,033.52	0.00	0.00	0.00
7,500.00	0.00	0.00	7,353.24	961.97	377.85	1,033.52	0.00	0.00	0.00
7,565.76	0.00	0.00	7,419.00	961.97	377.85	1,033.52	0.00	0.00	0.00

### Casing Points

Measured Depth (ft)	Vertical Depth (ft)	Name	Casing Diameter (")	Hole Diameter (")
750.00	750.00	9 5/8"	9-5/8	12-1/4

# BBC

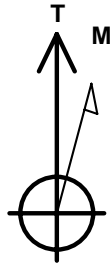
## Planning Report

<b>Database:</b>	Compass	<b>Local Co-ordinate Reference:</b>	Well Kaufman 22B-25-692
<b>Company:</b>	BILL BARRETT CORP	<b>TVD Reference:</b>	WELL @ 5936.00ft (Original Well Elev)
<b>Project:</b>	GARFIELD COUNTY, COLORADO NAD 1983	<b>MD Reference:</b>	WELL @ 5936.00ft (Original Well Elev)
<b>Site:</b>	Kaufman Pad #1 NESW-25-692	<b>North Reference:</b>	True
<b>Well:</b>	Kaufman 22B-25-692	<b>Survey Calculation Method:</b>	Minimum Curvature
<b>Wellbore:</b>	Wellbore #1		
<b>Design:</b>	Design #1		

Formations						
Measured Depth (ft)	Vertical Depth (ft)	Name	Lithology	Dip (°)	Dip Direction (°)	
3,556.22	3,444.00	Mesaverde		0.00		
4,458.21	4,314.00	Price Coal		0.00		
4,890.70	4,744.00	Top Gas		0.00		
7,345.76	7,199.00	Rollins		0.00		
	7,419.00	TD		0.00		

## WELL DETAILS: Kaufman 22B-25-692

Ground Level: 0.00  
 +N/-S+E/-W Northing Easting Latitude Longitude Slot  
 0.00 0.00 1612888.290 2402065.038 29° 49.237' N 8.5908 W



Azimuths to True North  
 Magnetic North: 10.40°

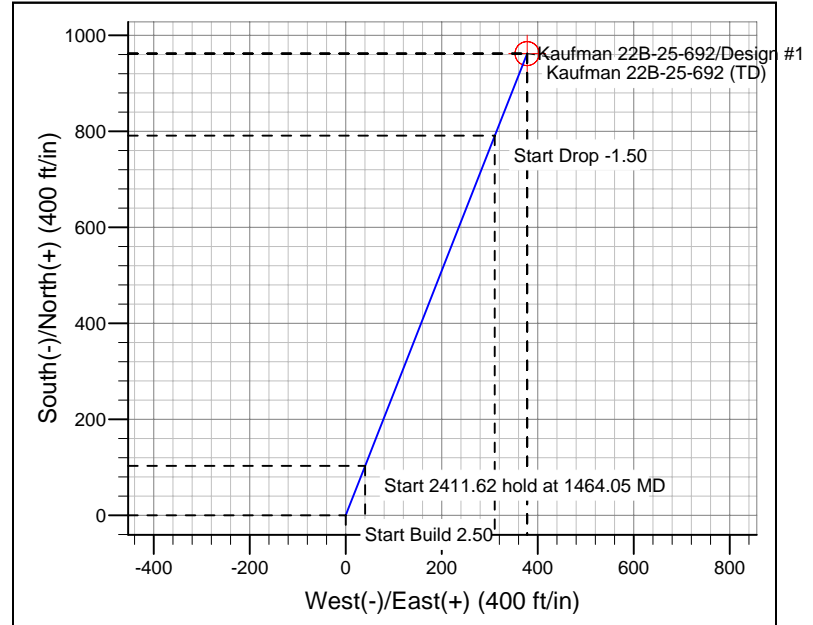
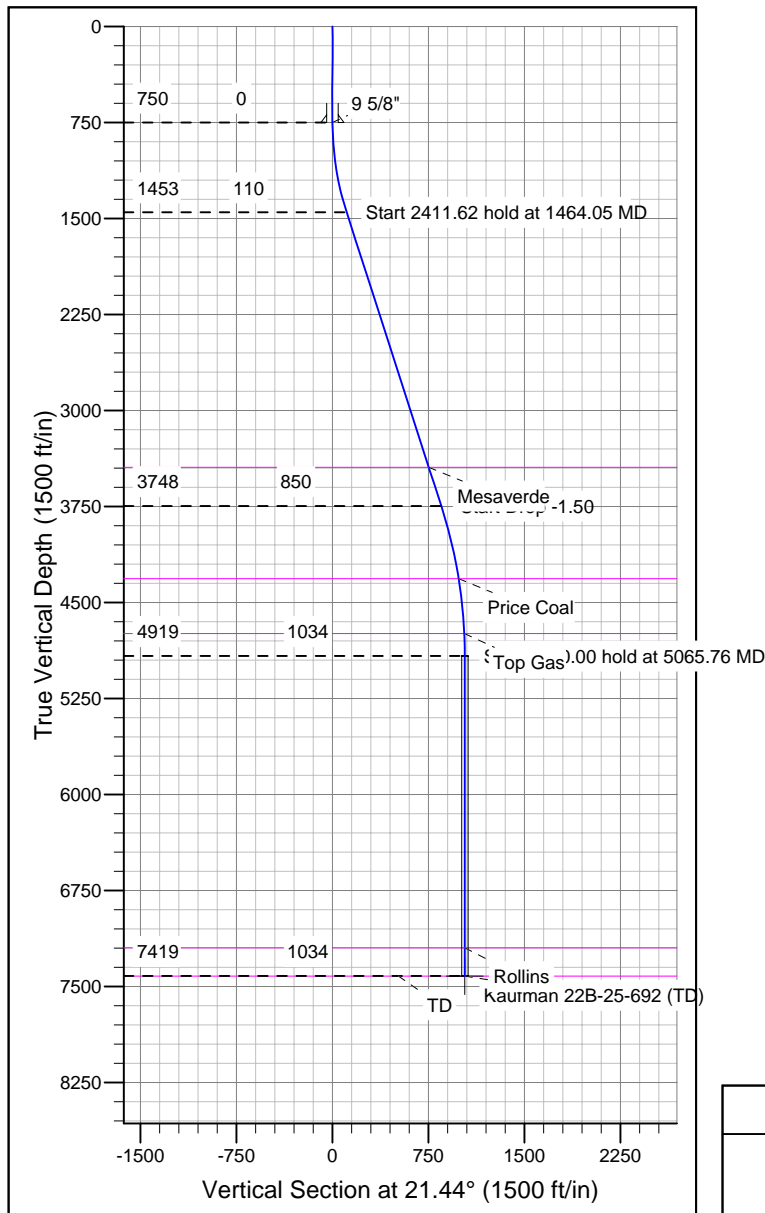
Magnetic Field  
 Strength: 52402.6snT  
 Dip Angle: 65.83°  
 Date: 3/16/2010  
 Model: BGGM2007

## SECTION DETAILS

Sec	MD	Inc	Azi	TVD	+N/-S	+E/-W	DLeg	TFace	VSec	Target
1	0.00	0.00	0.00	0.00	0.00	0.00	0.00	0.00	0.00	
	2750.00	0.00	0.00	750.00	0.00	0.00	0.00	0.00	0.00	
	1464.05	17.85	21.44	1452.56	102.70	40.34	2.50	21.44	110.34	
	3875.67	17.85	21.44	3748.07	790.80	310.61	0.00	0.00	849.62	
	5065.76	0.00	0.00	4919.00	961.97	377.85	1.50	180.00	1033.52	
	7565.76	0.00	0.00	7419.00	961.97	377.85	0.00	0.00	1033.52	Kaufman 22B-25-692 (TD)

## WELLBORE TARGET DETAILS

Name TVD +N/-S +E/-W Shape  
 Kaufman 22B-25-692 (TD) 961.97 377.85 Circle (Radius: 25.00)



## CASING DETAILS

TVD MD Name Size  
 750.00 750.00 9 5/8" 9-5/8"

## FORMATION TOP DETAILS

TVDPATH	MDPATH	FORMATION
3444.00	3556.22	Mesaverde
4314.00	4458.21	Price Coal
4744.00	4890.70	Top Gas
7199.00	7345.76	Rollins

## REFERENCE INFORMATION

Co-ordinate (N/E) Reference: Well Kaufman 22B-25-692, True North  
 Vertical (TVD) Reference: WELL @ 5936.00ft (Original Well Elev)  
 Section (VS) Reference: Slot - (0.00N, 0.00E)  
 Measured Depth Reference: WELL @ 5936.00ft (Original Well Elev)  
 Calculation Method: Minimum Curvature