

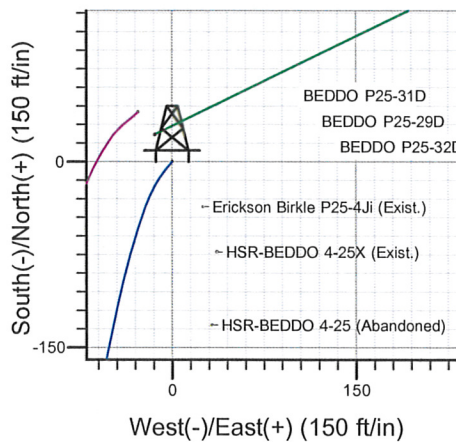
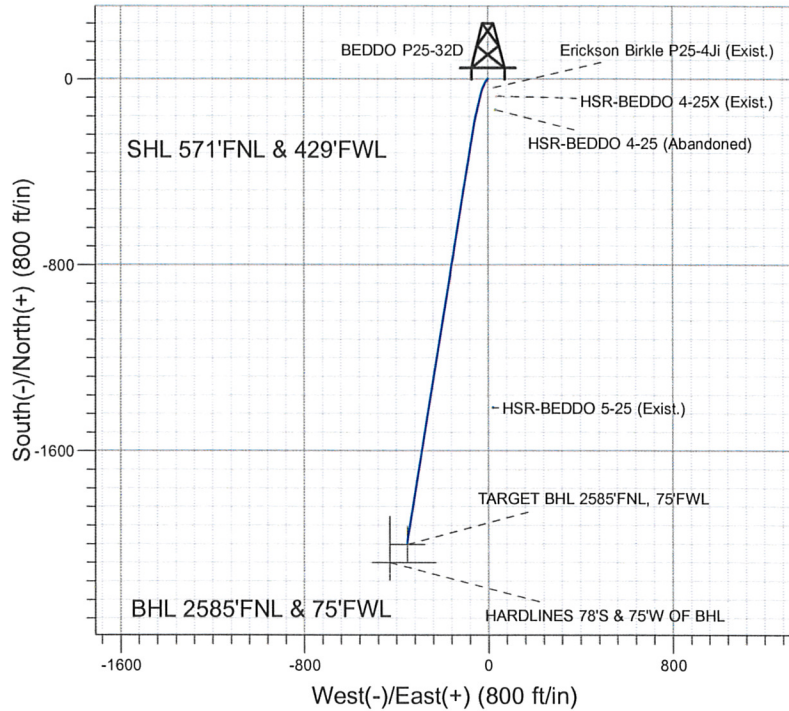
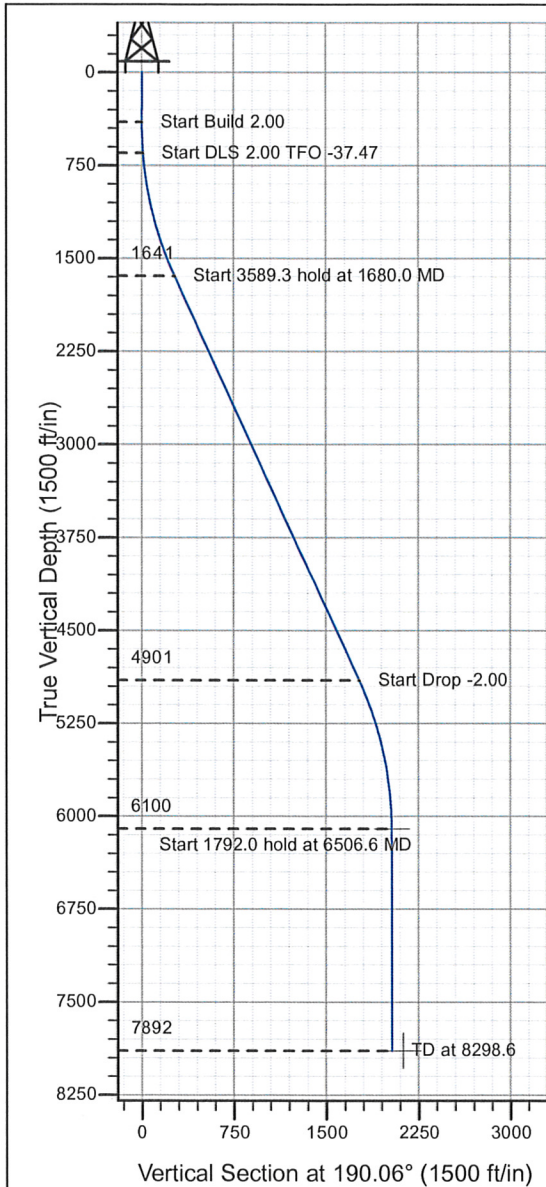
### Well Name: BEDDO P25-32D

Surface Location: BEDDO P25-31D Sec.25-T3N-R67W  
North American Datum 1983 , US State Plane 1983 , Colorado Northern Zone

Ground Elevation: 4799.0

+N/-S+E/-W Northing Easting Latitude Longitude Slot  
0.0 0.0 1317051.28 3182352.46 40° 12' 6.696 N 104° 50' 49.776 W  
Original Well Elev WELL @ 4812.0ft (Original Well Elev)

### NOBLE ENERGY INC WELD COUNTY CO



BEDDO P25-31D Sec.25-T3N-R67W  
BEDDO P25-32D  
Plan #1 (9-14-09)  
18:28, October 06 2009



Azimuths to True North  
Magnetic North: 9.09°

Magnetic Field  
Strength: 53221.8snT  
Dip Angle: 66.94°  
Date: 9/14/2009  
Model: IGRF200510

#### WELLBORE TARGET DETAILS (LAT/LONG)

Name	TVD	+N/-S	+E/-W	Latitude	Longitude	Shape
TARGET BHL 2585'FNL, 75'FWL	6100.0	-2000.9	-355.0	40° 11' 46.923 N	104° 50' 54.350 W	Point
HARDLINES 78'S & 75'W OF BHL	7892.0	-2078.9	-430.0	40° 11' 46.152 N	104° 50' 55.317 W	Polygon

#### SECTION DETAILS

Sec	MD	Inc	Azi	TVD	+N/-S	+E/-W	DLeg	TFace	VSec	Target
1	0.0	0.00	0.00	0.0	0.0	0.0	0.00	0.00	0.0	
2	400.0	0.00	0.00	400.0	0.0	0.0	0.00	0.00	0.0	
3	650.0	5.00	220.00	649.7	-8.4	-7.0	2.00	220.00	9.4	
4	1680.0	24.75	189.25	1641.1	-258.2	-71.2	2.00	-37.47	266.7	
5	5269.2	24.75	189.25	4900.8	-1741.2	-312.7	0.00	0.00	1769.1	
6	6506.6	0.00	0.00	6100.0	-2000.9	-355.0	2.00	180.00	2032.1	TARGET BHL 2585'FNL, 75'FWL
7	8298.6	0.00	0.00	7892.0	-2000.9	-355.0	0.00	0.00	2032.1	



## **Directional**

### **NOBLE ENERGY INC WELD COUNTY CO**

**SEC.25-T3N-R67W  
BEDDO P25-31D Sec.25-T3N-R67W  
BEDDO P25-32D**

**Wellbore #1**

**Plan: Plan #1 (9-14-09)**

### **Standard Planning Report**

**06 October, 2009**





Database:	EDM den0-adp01 Server Data	Local Co-ordinate Reference:	Well BEDDO P25-32D
Company:	NOBLE ENERGY INC WELD COUNTY CO	TVD Reference:	WELL @ 4812.0ft (Original Well Elev)
Project:	SEC.25-T3N-R67W	MD Reference:	WELL @ 4812.0ft (Original Well Elev)
Site:	BEDDO P25-31D Sec.25-T3N-R67W	North Reference:	True
Well:	BEDDO P25-32D	Survey Calculation Method:	Minimum Curvature
Wellbore:	Wellbore #1		
Design:	Plan #1 (9-14-09)		

Project	SEC.25-T3N-R67W, Weld County, Colorado		
Map System:	US State Plane 1983	System Datum:	Mean Sea Level
Geo Datum:	North American Datum 1983		Using Well Reference Point
Map Zone:	Colorado Northern Zone		Using geodetic scale factor

Site		BEDDO P25-31D Sec.25-T3N-R67W			
Site Position:		Northing:	1,317,051.27ft	Latitude:	40° 12' 6.696 N
From:	Lat/Long	Easting:	3,182,349.67ft	Longitude:	104° 50' 49.812 W
Position Uncertainty:	0.0 ft	Slot Radius:	"	Grid Convergence:	0.42 °

Well	BEDDO P25-32D					
Well Position	+N/-S	0.0 ft	Northing:	1,317,051.28 ft	Latitude:	40° 12' 6.696 N
	+E/-W	2.8 ft	Easting:	3,182,352.46 ft	Longitude:	104° 50' 49.776 W
Position Uncertainty		0.0 ft	Wellhead Elevation:	ft	Ground Level:	4,799.0 ft

Wellbore	Wellbore #1
----------	-------------

Magnetics	Model Name	Sample Date	Declination (°)	Dip Angle (°)	Field Strength (nT)
	IGRF200510	9/14/2009	9.09	66.94	53,222

Design	Plan #1 (9-14-09)
--------	-------------------

Audit Notes:				
Version:	Phase:	PROTOTYPE	Tie On Depth:	0.0
Vertical Section:	Depth From (TVD) (ft)	+N-S (ft)	+E-W (ft)	Direction (°)
	0.0	0.0	0.0	190.06

Plan Sections										
Measured Depth (ft)	Inclination (°)	Azimuth (°)	Vertical Depth (ft)	+N/-S (ft)	+E/-W (ft)	Dogleg Rate (°/100ft)	Build Rate (°/100ft)	Turn Rate (°/100ft)	TFO (°)	Target
0.0	0.00	0.00	0.0	0.0	0.0	0.00	0.00	0.00	0.00	
400.0	0.00	0.00	400.0	0.0	0.0	0.00	0.00	0.00	0.00	
650.0	5.00	220.00	649.7	-8.4	-7.0	2.00	2.00	0.00	220.00	
1,680.0	24.75	189.25	1,641.1	-258.2	-71.2	2.00	1.92	-2.99	-37.47	
5,269.2	24.75	189.25	4,900.8	-1,741.2	-312.7	0.00	0.00	0.00	0.00	
6,506.6	0.00	0.00	6,100.0	-2,000.9	-355.0	2.00	-2.00	0.00	180.00	TARGET BHL 2585
8,298.6	0.00	0.00	7,892.0	-2,000.9	-355.0	0.00	0.00	0.00	0.00	



Database:	EDM den0-adp01 Server Data	Local Co-ordinate Reference:	Well BEDDO P25-32D
Company:	NOBLE ENERGY INC WELD COUNTY CO	TVD Reference:	WELL @ 4812.0ft (Original Well Elev)
Project:	SEC.25-T3N-R67W	MD Reference:	WELL @ 4812.0ft (Original Well Elev)
Site:	BEDDO P25-31D Sec.25-T3N-R67W	North Reference:	True
Well:	BEDDO P25-32D	Survey Calculation Method:	Minimum Curvature
Wellbore:	Wellbore #1		
Design:	Plan #1 (9-14-09)		

## Planned Survey

Measured Depth (ft)	Inclination (°)	Azimuth (°)	Vertical Depth (ft)	+N/-S (ft)	+E/-W (ft)	Vertical Section (ft)	Dogleg Rate (°/100ft)	Build Rate (°/100ft)	Turn Rate (°/100ft)
0.0	0.00	0.00	0.0	0.0	0.0	0.0	0.00	0.00	0.00
40.0	0.00	0.00	40.0	0.0	0.0	0.0	0.00	0.00	0.00
80.0	0.00	0.00	80.0	0.0	0.0	0.0	0.00	0.00	0.00
120.0	0.00	0.00	120.0	0.0	0.0	0.0	0.00	0.00	0.00
160.0	0.00	0.00	160.0	0.0	0.0	0.0	0.00	0.00	0.00
200.0	0.00	0.00	200.0	0.0	0.0	0.0	0.00	0.00	0.00
240.0	0.00	0.00	240.0	0.0	0.0	0.0	0.00	0.00	0.00
280.0	0.00	0.00	280.0	0.0	0.0	0.0	0.00	0.00	0.00
320.0	0.00	0.00	320.0	0.0	0.0	0.0	0.00	0.00	0.00
360.0	0.00	0.00	360.0	0.0	0.0	0.0	0.00	0.00	0.00
400.0	0.00	0.00	400.0	0.0	0.0	0.0	0.00	0.00	0.00
440.0	0.80	220.00	440.0	-0.2	-0.2	0.2	2.00	2.00	0.00
480.0	1.60	220.00	480.0	-0.9	-0.7	1.0	2.00	2.00	0.00
520.0	2.40	220.00	520.0	-1.9	-1.6	2.2	2.00	2.00	0.00
560.0	3.20	220.00	559.9	-3.4	-2.9	3.9	2.00	2.00	0.00
600.0	4.00	220.00	599.8	-5.3	-4.5	6.0	2.00	2.00	0.00
640.0	4.80	220.00	639.7	-7.7	-6.5	8.7	2.00	2.00	0.00
650.0	5.00	220.00	649.7	-8.4	-7.0	9.4	2.00	2.00	0.00
680.0	5.49	216.18	679.6	-10.5	-8.7	11.9	2.00	1.63	-12.73
720.0	6.17	212.05	719.4	-13.9	-11.0	15.6	2.00	1.70	-10.32
760.0	6.88	208.75	759.1	-17.8	-13.3	19.8	2.00	1.77	-8.24
800.0	7.60	206.07	798.8	-22.3	-15.6	24.7	2.00	1.81	-6.70
840.0	8.34	203.86	838.4	-27.3	-17.9	30.0	2.00	1.85	-5.53
880.0	9.09	202.01	877.9	-32.9	-20.3	35.9	2.00	1.87	-4.63
920.0	9.85	200.44	917.4	-39.0	-22.6	42.4	2.00	1.89	-3.92
960.0	10.61	199.10	956.7	-45.7	-25.0	49.4	2.00	1.91	-3.37
1,000.0	11.38	197.93	996.0	-52.9	-27.5	56.9	2.00	1.92	-2.92
1,040.0	12.15	196.91	1,035.2	-60.7	-29.9	65.0	2.00	1.93	-2.55
1,080.0	12.93	196.01	1,074.2	-69.1	-32.4	73.6	2.00	1.94	-2.25
1,120.0	13.71	195.21	1,113.1	-77.9	-34.8	82.8	2.00	1.95	-2.00
1,160.0	14.49	194.49	1,151.9	-87.3	-37.3	92.5	2.00	1.95	-1.79
1,200.0	15.27	193.85	1,190.6	-97.3	-39.9	102.8	2.00	1.96	-1.61
1,240.0	16.05	193.27	1,229.1	-107.8	-42.4	113.6	2.00	1.96	-1.46
1,280.0	16.84	192.74	1,267.5	-118.8	-44.9	124.9	2.00	1.96	-1.32
1,320.0	17.63	192.25	1,305.7	-130.4	-47.5	136.7	2.00	1.97	-1.21
1,360.0	18.42	191.81	1,343.7	-142.5	-50.1	149.1	2.00	1.97	-1.11
1,400.0	19.21	191.40	1,381.6	-155.1	-52.7	162.0	2.00	1.97	-1.02
1,440.0	19.99	191.02	1,419.3	-168.3	-55.3	175.4	2.00	1.97	-0.94
1,480.0	20.79	190.68	1,456.7	-182.0	-57.9	189.3	2.00	1.98	-0.87
1,520.0	21.58	190.35	1,494.0	-196.2	-60.5	203.8	2.00	1.98	-0.81
1,560.0	22.37	190.05	1,531.1	-210.9	-63.2	218.7	2.00	1.98	-0.76
1,600.0	23.16	189.76	1,568.0	-226.2	-65.8	234.2	2.00	1.98	-0.71
1,640.0	23.95	189.50	1,604.7	-241.9	-68.5	250.2	2.00	1.98	-0.66
1,680.0	24.75	189.25	1,641.1	-258.2	-71.2	266.7	2.00	1.98	-0.62
1,720.0	24.75	189.25	1,677.5	-274.7	-73.9	283.4	0.00	0.00	0.00
1,760.0	24.75	189.25	1,713.8	-291.3	-76.6	300.2	0.00	0.00	0.00
1,800.0	24.75	189.25	1,750.1	-307.8	-79.3	316.9	0.00	0.00	0.00
1,840.0	24.75	189.25	1,786.4	-324.3	-82.0	333.7	0.00	0.00	0.00
1,880.0	24.75	189.25	1,822.8	-340.9	-84.7	350.4	0.00	0.00	0.00
1,920.0	24.75	189.25	1,859.1	-357.4	-87.3	367.1	0.00	0.00	0.00
1,960.0	24.75	189.25	1,895.4	-373.9	-90.0	383.9	0.00	0.00	0.00
2,000.0	24.75	189.25	1,931.7	-390.4	-92.7	400.6	0.00	0.00	0.00
2,040.0	24.75	189.25	1,968.1	-407.0	-95.4	417.4	0.00	0.00	0.00
2,080.0	24.75	189.25	2,004.4	-423.5	-98.1	434.1	0.00	0.00	0.00



Database:	EDM den0-adp01 Server Data	Local Co-ordinate Reference:	Well BEDDO P25-32D
Company:	NOBLE ENERGY INC WELD COUNTY CO	TVD Reference:	WELL @ 4812.0ft (Original Well Elev)
Project:	SEC.25-T3N-R67W	MD Reference:	WELL @ 4812.0ft (Original Well Elev)
Site:	BEDDO P25-31D Sec.25-T3N-R67W	North Reference:	True
Well:	BEDDO P25-32D	Survey Calculation Method:	Minimum Curvature
Wellbore:	Wellbore #1		
Design:	Plan #1 (9-14-09)		

Planned Survey									
Measured Depth (ft)	Inclination (°)	Azimuth (°)	Vertical Depth (ft)	+N/-S (ft)	+E/-W (ft)	Vertical Section (ft)	Dogleg Rate (°/100ft)	Build Rate (°/100ft)	Turn Rate (°/100ft)
2,120.0	24.75	189.25	2,040.7	-440.0	-100.8	450.9	0.00	0.00	0.00
2,160.0	24.75	189.25	2,077.0	-456.5	-103.5	467.6	0.00	0.00	0.00
2,200.0	24.75	189.25	2,113.4	-473.1	-106.2	484.3	0.00	0.00	0.00
2,240.0	24.75	189.25	2,149.7	-489.6	-108.9	501.1	0.00	0.00	0.00
2,280.0	24.75	189.25	2,186.0	-506.1	-111.6	517.8	0.00	0.00	0.00
2,320.0	24.75	189.25	2,222.4	-522.7	-114.3	534.6	0.00	0.00	0.00
2,360.0	24.75	189.25	2,258.7	-539.2	-117.0	551.3	0.00	0.00	0.00
2,400.0	24.75	189.25	2,295.0	-555.7	-119.6	568.1	0.00	0.00	0.00
2,440.0	24.75	189.25	2,331.3	-572.2	-122.3	584.8	0.00	0.00	0.00
2,480.0	24.75	189.25	2,367.7	-588.8	-125.0	601.5	0.00	0.00	0.00
2,520.0	24.75	189.25	2,404.0	-605.3	-127.7	618.3	0.00	0.00	0.00
2,560.0	24.75	189.25	2,440.3	-621.8	-130.4	635.0	0.00	0.00	0.00
2,600.0	24.75	189.25	2,476.6	-638.3	-133.1	651.8	0.00	0.00	0.00
2,640.0	24.75	189.25	2,513.0	-654.9	-135.8	668.5	0.00	0.00	0.00
2,680.0	24.75	189.25	2,549.3	-671.4	-138.5	685.3	0.00	0.00	0.00
2,720.0	24.75	189.25	2,585.6	-687.9	-141.2	702.0	0.00	0.00	0.00
2,760.0	24.75	189.25	2,621.9	-704.4	-143.9	718.7	0.00	0.00	0.00
2,800.0	24.75	189.25	2,658.3	-721.0	-146.6	735.5	0.00	0.00	0.00
2,840.0	24.75	189.25	2,694.6	-737.5	-149.2	752.2	0.00	0.00	0.00
2,880.0	24.75	189.25	2,730.9	-754.0	-151.9	769.0	0.00	0.00	0.00
2,920.0	24.75	189.25	2,767.3	-770.6	-154.6	785.7	0.00	0.00	0.00
2,960.0	24.75	189.25	2,803.6	-787.1	-157.3	802.5	0.00	0.00	0.00
3,000.0	24.75	189.25	2,839.9	-803.6	-160.0	819.2	0.00	0.00	0.00
3,040.0	24.75	189.25	2,876.2	-820.1	-162.7	835.9	0.00	0.00	0.00
3,080.0	24.75	189.25	2,912.6	-836.7	-165.4	852.7	0.00	0.00	0.00
3,120.0	24.75	189.25	2,948.9	-853.2	-168.1	869.4	0.00	0.00	0.00
3,160.0	24.75	189.25	2,985.2	-869.7	-170.8	886.2	0.00	0.00	0.00
3,200.0	24.75	189.25	3,021.5	-886.2	-173.5	902.9	0.00	0.00	0.00
3,240.0	24.75	189.25	3,057.9	-902.8	-176.2	919.7	0.00	0.00	0.00
3,280.0	24.75	189.25	3,094.2	-919.3	-178.8	936.4	0.00	0.00	0.00
3,320.0	24.75	189.25	3,130.5	-935.8	-181.5	953.1	0.00	0.00	0.00
3,360.0	24.75	189.25	3,166.8	-952.4	-184.2	969.9	0.00	0.00	0.00
3,400.0	24.75	189.25	3,203.2	-968.9	-186.9	986.6	0.00	0.00	0.00
3,440.0	24.75	189.25	3,239.5	-985.4	-189.6	1,003.4	0.00	0.00	0.00
3,480.0	24.75	189.25	3,275.8	-1,001.9	-192.3	1,020.1	0.00	0.00	0.00
3,520.0	24.75	189.25	3,312.1	-1,018.5	-195.0	1,036.9	0.00	0.00	0.00
3,560.0	24.75	189.25	3,348.5	-1,035.0	-197.7	1,053.6	0.00	0.00	0.00
3,600.0	24.75	189.25	3,384.8	-1,051.5	-200.4	1,070.3	0.00	0.00	0.00
3,640.0	24.75	189.25	3,421.1	-1,068.0	-203.1	1,087.1	0.00	0.00	0.00
3,680.0	24.75	189.25	3,457.5	-1,084.6	-205.8	1,103.8	0.00	0.00	0.00
3,720.0	24.75	189.25	3,493.8	-1,101.1	-208.5	1,120.6	0.00	0.00	0.00
3,760.0	24.75	189.25	3,530.1	-1,117.6	-211.1	1,137.3	0.00	0.00	0.00
3,800.0	24.75	189.25	3,566.4	-1,134.1	-213.8	1,154.1	0.00	0.00	0.00
3,840.0	24.75	189.25	3,602.8	-1,150.7	-216.5	1,170.8	0.00	0.00	0.00
3,880.0	24.75	189.25	3,639.1	-1,167.2	-219.2	1,187.6	0.00	0.00	0.00
3,920.0	24.75	189.25	3,675.4	-1,183.7	-221.9	1,204.3	0.00	0.00	0.00
3,960.0	24.75	189.25	3,711.7	-1,200.3	-224.6	1,221.0	0.00	0.00	0.00
4,000.0	24.75	189.25	3,748.1	-1,216.8	-227.3	1,237.8	0.00	0.00	0.00
4,040.0	24.75	189.25	3,784.4	-1,233.3	-230.0	1,254.5	0.00	0.00	0.00
4,080.0	24.75	189.25	3,820.7	-1,249.8	-232.7	1,271.3	0.00	0.00	0.00
4,120.0	24.75	189.25	3,857.0	-1,266.4	-235.4	1,288.0	0.00	0.00	0.00
4,160.0	24.75	189.25	3,893.4	-1,282.9	-238.1	1,304.8	0.00	0.00	0.00
4,200.0	24.75	189.25	3,929.7	-1,299.4	-240.7	1,321.5	0.00	0.00	0.00
4,240.0	24.75	189.25	3,966.0	-1,315.9	-243.4	1,338.2	0.00	0.00	0.00



Database:	EDM den0-adp01 Server Data	Local Co-ordinate Reference:	Well BEDDO P25-32D
Company:	NOBLE ENERGY INC WELD COUNTY CO	TVD Reference:	WELL @ 4812.0ft (Original Well Elev)
Project:	SEC.25-T3N-R67W	MD Reference:	WELL @ 4812.0ft (Original Well Elev)
Site:	BEDDO P25-31D Sec.25-T3N-R67W	North Reference:	True
Well:	BEDDO P25-32D	Survey Calculation Method:	Minimum Curvature
Wellbore:	Wellbore #1		
Design:	Plan #1 (9-14-09)		

## Planned Survey

Measured Depth (ft)	Inclination (°)	Azimuth (°)	Vertical Depth (ft)	+N/-S (ft)	+E/-W (ft)	Vertical Section (ft)	Dogleg Rate (°/100ft)	Build Rate (°/100ft)	Turn Rate (°/100ft)
4,280.0	24.75	189.25	4,002.4	-1,332.5	-246.1	1,355.0	0.00	0.00	0.00
4,320.0	24.75	189.25	4,038.7	-1,349.0	-248.8	1,371.7	0.00	0.00	0.00
4,360.0	24.75	189.25	4,075.0	-1,365.5	-251.5	1,388.5	0.00	0.00	0.00
4,400.0	24.75	189.25	4,111.3	-1,382.1	-254.2	1,405.2	0.00	0.00	0.00
4,440.0	24.75	189.25	4,147.7	-1,398.6	-256.9	1,422.0	0.00	0.00	0.00
4,480.0	24.75	189.25	4,184.0	-1,415.1	-259.6	1,438.7	0.00	0.00	0.00
4,520.0	24.75	189.25	4,220.3	-1,431.6	-262.3	1,455.4	0.00	0.00	0.00
4,560.0	24.75	189.25	4,256.6	-1,448.2	-265.0	1,472.2	0.00	0.00	0.00
4,600.0	24.75	189.25	4,293.0	-1,464.7	-267.7	1,488.9	0.00	0.00	0.00
4,640.0	24.75	189.25	4,329.3	-1,481.2	-270.3	1,505.7	0.00	0.00	0.00
4,680.0	24.75	189.25	4,365.6	-1,497.7	-273.0	1,522.4	0.00	0.00	0.00
4,720.0	24.75	189.25	4,401.9	-1,514.3	-275.7	1,539.2	0.00	0.00	0.00
4,760.0	24.75	189.25	4,438.3	-1,530.8	-278.4	1,555.9	0.00	0.00	0.00
4,800.0	24.75	189.25	4,474.6	-1,547.3	-281.1	1,572.6	0.00	0.00	0.00
4,840.0	24.75	189.25	4,510.9	-1,563.9	-283.8	1,589.4	0.00	0.00	0.00
4,880.0	24.75	189.25	4,547.3	-1,580.4	-286.5	1,606.1	0.00	0.00	0.00
4,920.0	24.75	189.25	4,583.6	-1,596.9	-289.2	1,622.9	0.00	0.00	0.00
4,960.0	24.75	189.25	4,619.9	-1,613.4	-291.9	1,639.6	0.00	0.00	0.00
5,000.0	24.75	189.25	4,656.2	-1,630.0	-294.6	1,656.4	0.00	0.00	0.00
5,040.0	24.75	189.25	4,692.6	-1,646.5	-297.3	1,673.1	0.00	0.00	0.00
5,080.0	24.75	189.25	4,728.9	-1,663.0	-300.0	1,689.8	0.00	0.00	0.00
5,120.0	24.75	189.25	4,765.2	-1,679.5	-302.6	1,706.6	0.00	0.00	0.00
5,160.0	24.75	189.25	4,801.5	-1,696.1	-305.3	1,723.3	0.00	0.00	0.00
5,200.0	24.75	189.25	4,837.9	-1,712.6	-308.0	1,740.1	0.00	0.00	0.00
5,240.0	24.75	189.25	4,874.2	-1,729.1	-310.7	1,756.8	0.00	0.00	0.00
5,269.2	24.75	189.25	4,900.8	-1,741.2	-312.7	1,769.1	0.00	0.00	0.00
5,280.0	24.53	189.25	4,910.5	-1,745.6	-313.4	1,773.5	2.00	-2.00	0.00
5,320.0	23.73	189.25	4,947.0	-1,761.8	-316.0	1,789.9	2.00	-2.00	0.00
5,360.0	22.93	189.25	4,983.8	-1,777.4	-318.6	1,805.7	2.00	-2.00	0.00
5,400.0	22.13	189.25	5,020.7	-1,792.5	-321.0	1,821.1	2.00	-2.00	0.00
5,440.0	21.33	189.25	5,057.9	-1,807.2	-323.4	1,835.9	2.00	-2.00	0.00
5,480.0	20.53	189.25	5,095.2	-1,821.3	-325.7	1,850.2	2.00	-2.00	0.00
5,520.0	19.73	189.25	5,132.8	-1,834.8	-327.9	1,863.9	2.00	-2.00	0.00
5,560.0	18.93	189.25	5,170.5	-1,847.9	-330.1	1,877.2	2.00	-2.00	0.00
5,600.0	18.13	189.25	5,208.4	-1,860.5	-332.1	1,889.9	2.00	-2.00	0.00
5,640.0	17.33	189.25	5,246.5	-1,872.5	-334.1	1,902.1	2.00	-2.00	0.00
5,680.0	16.53	189.25	5,284.8	-1,884.0	-335.9	1,913.7	2.00	-2.00	0.00
5,720.0	15.73	189.25	5,323.2	-1,895.0	-337.7	1,924.8	2.00	-2.00	0.00
5,760.0	14.93	189.25	5,361.8	-1,905.4	-339.4	1,935.4	2.00	-2.00	0.00
5,800.0	14.13	189.25	5,400.5	-1,915.3	-341.0	1,945.4	2.00	-2.00	0.00
5,840.0	13.33	189.25	5,439.4	-1,924.7	-342.6	1,954.9	2.00	-2.00	0.00
5,880.0	12.53	189.25	5,478.4	-1,933.5	-344.0	1,963.9	2.00	-2.00	0.00
5,920.0	11.73	189.25	5,517.5	-1,941.8	-345.4	1,972.3	2.00	-2.00	0.00
5,960.0	10.93	189.25	5,556.7	-1,949.6	-346.6	1,980.1	2.00	-2.00	0.00
6,000.0	10.13	189.25	5,596.0	-1,956.8	-347.8	1,987.4	2.00	-2.00	0.00
6,040.0	9.33	189.25	5,635.4	-1,963.5	-348.9	1,994.2	2.00	-2.00	0.00
6,080.0	8.53	189.25	5,675.0	-1,969.6	-349.9	2,000.4	2.00	-2.00	0.00
6,120.0	7.73	189.25	5,714.6	-1,975.2	-350.8	2,006.1	2.00	-2.00	0.00
6,160.0	6.93	189.25	5,754.2	-1,980.2	-351.6	2,011.2	2.00	-2.00	0.00
6,200.0	6.13	189.25	5,794.0	-1,984.7	-352.3	2,015.7	2.00	-2.00	0.00
6,240.0	5.33	189.25	5,833.8	-1,988.6	-353.0	2,019.7	2.00	-2.00	0.00
6,280.0	4.53	189.25	5,873.6	-1,992.0	-353.5	2,023.2	2.00	-2.00	0.00
6,320.0	3.73	189.25	5,913.5	-1,994.9	-354.0	2,026.0	2.00	-2.00	0.00
6,360.0	2.93	189.25	5,953.5	-1,997.2	-354.4	2,028.4	2.00	-2.00	0.00



Database:	EDM den0-adp01 Server Data	Local Co-ordinate Reference:	Well BEDDO P25-32D
Company:	NOBLE ENERGY INC WELD COUNTY CO	TVD Reference:	WELL @ 4812.0ft (Original Well Elev)
Project:	SEC.25-T3N-R67W	MD Reference:	WELL @ 4812.0ft (Original Well Elev)
Site:	BEDDO P25-31D Sec.25-T3N-R67W	North Reference:	True
Well:	BEDDO P25-32D	Survey Calculation Method:	Minimum Curvature
Wellbore:	Wellbore #1		
Design:	Plan #1 (9-14-09)		

Planned Survey

Measured Depth (ft)	Inclination (°)	Azimuth (°)	Vertical Depth (ft)	+N/-S (ft)	+E/-W (ft)	Vertical Section (ft)	Dogleg Rate (°/100ft)	Build Rate (°/100ft)	Turn Rate (°/100ft)
6,400.0	2.13	189.25	5,993.4	-1,998.9	-354.7	2,030.1	2.00	-2.00	0.00
6,440.0	1.33	189.25	6,033.4	-2,000.1	-354.8	2,031.3	2.00	-2.00	0.00
6,480.0	0.53	189.25	6,073.4	-2,000.8	-354.9	2,032.0	2.00	-2.00	0.00
6,506.6	0.00	0.00	6,100.0	-2,000.9	-355.0	2,032.1	2.00	-2.00	0.00
<b>TARGET BHL 2585'FNL, 75'FWL</b>									
6,520.0	0.00	0.00	6,113.4	-2,000.9	-355.0	2,032.1	0.00	0.00	0.00
6,560.0	0.00	0.00	6,153.4	-2,000.9	-355.0	2,032.1	0.00	0.00	0.00
6,600.0	0.00	0.00	6,193.4	-2,000.9	-355.0	2,032.1	0.00	0.00	0.00
6,640.0	0.00	0.00	6,233.4	-2,000.9	-355.0	2,032.1	0.00	0.00	0.00
6,680.0	0.00	0.00	6,273.4	-2,000.9	-355.0	2,032.1	0.00	0.00	0.00
6,720.0	0.00	0.00	6,313.4	-2,000.9	-355.0	2,032.1	0.00	0.00	0.00
6,760.0	0.00	0.00	6,353.4	-2,000.9	-355.0	2,032.1	0.00	0.00	0.00
6,800.0	0.00	0.00	6,393.4	-2,000.9	-355.0	2,032.1	0.00	0.00	0.00
6,840.0	0.00	0.00	6,433.4	-2,000.9	-355.0	2,032.1	0.00	0.00	0.00
6,880.0	0.00	0.00	6,473.4	-2,000.9	-355.0	2,032.1	0.00	0.00	0.00
6,920.0	0.00	0.00	6,513.4	-2,000.9	-355.0	2,032.1	0.00	0.00	0.00
6,960.0	0.00	0.00	6,553.4	-2,000.9	-355.0	2,032.1	0.00	0.00	0.00
7,000.0	0.00	0.00	6,593.4	-2,000.9	-355.0	2,032.1	0.00	0.00	0.00
7,040.0	0.00	0.00	6,633.4	-2,000.9	-355.0	2,032.1	0.00	0.00	0.00
7,080.0	0.00	0.00	6,673.4	-2,000.9	-355.0	2,032.1	0.00	0.00	0.00
7,120.0	0.00	0.00	6,713.4	-2,000.9	-355.0	2,032.1	0.00	0.00	0.00
7,160.0	0.00	0.00	6,753.4	-2,000.9	-355.0	2,032.1	0.00	0.00	0.00
7,200.0	0.00	0.00	6,793.4	-2,000.9	-355.0	2,032.1	0.00	0.00	0.00
7,240.0	0.00	0.00	6,833.4	-2,000.9	-355.0	2,032.1	0.00	0.00	0.00
7,280.0	0.00	0.00	6,873.4	-2,000.9	-355.0	2,032.1	0.00	0.00	0.00
7,320.0	0.00	0.00	6,913.4	-2,000.9	-355.0	2,032.1	0.00	0.00	0.00
7,360.0	0.00	0.00	6,953.4	-2,000.9	-355.0	2,032.1	0.00	0.00	0.00
7,400.0	0.00	0.00	6,993.4	-2,000.9	-355.0	2,032.1	0.00	0.00	0.00
7,413.6	0.00	0.00	7,007.0	-2,000.9	-355.0	2,032.1	0.00	0.00	0.00
<b>NIOBRARA</b>									
7,440.0	0.00	0.00	7,033.4	-2,000.9	-355.0	2,032.1	0.00	0.00	0.00
7,480.0	0.00	0.00	7,073.4	-2,000.9	-355.0	2,032.1	0.00	0.00	0.00
7,520.0	0.00	0.00	7,113.4	-2,000.9	-355.0	2,032.1	0.00	0.00	0.00
7,560.0	0.00	0.00	7,153.4	-2,000.9	-355.0	2,032.1	0.00	0.00	0.00
7,600.0	0.00	0.00	7,193.4	-2,000.9	-355.0	2,032.1	0.00	0.00	0.00
7,640.0	0.00	0.00	7,233.4	-2,000.9	-355.0	2,032.1	0.00	0.00	0.00
7,680.0	0.00	0.00	7,273.4	-2,000.9	-355.0	2,032.1	0.00	0.00	0.00
7,703.6	0.00	0.00	7,297.0	-2,000.9	-355.0	2,032.1	0.00	0.00	0.00
<b>CODELL</b>									
7,720.0	0.00	0.00	7,313.4	-2,000.9	-355.0	2,032.1	0.00	0.00	0.00
7,760.0	0.00	0.00	7,353.4	-2,000.9	-355.0	2,032.1	0.00	0.00	0.00
7,800.0	0.00	0.00	7,393.4	-2,000.9	-355.0	2,032.1	0.00	0.00	0.00
7,840.0	0.00	0.00	7,433.4	-2,000.9	-355.0	2,032.1	0.00	0.00	0.00
7,880.0	0.00	0.00	7,473.4	-2,000.9	-355.0	2,032.1	0.00	0.00	0.00
7,920.0	0.00	0.00	7,513.4	-2,000.9	-355.0	2,032.1	0.00	0.00	0.00
7,960.0	0.00	0.00	7,553.4	-2,000.9	-355.0	2,032.1	0.00	0.00	0.00
8,000.0	0.00	0.00	7,593.4	-2,000.9	-355.0	2,032.1	0.00	0.00	0.00
8,040.0	0.00	0.00	7,633.4	-2,000.9	-355.0	2,032.1	0.00	0.00	0.00
8,080.0	0.00	0.00	7,673.4	-2,000.9	-355.0	2,032.1	0.00	0.00	0.00
8,120.0	0.00	0.00	7,713.4	-2,000.9	-355.0	2,032.1	0.00	0.00	0.00
8,148.6	0.00	0.00	7,742.0	-2,000.9	-355.0	2,032.1	0.00	0.00	0.00
<b>J-SAND</b>									
8,160.0	0.00	0.00	7,753.4	-2,000.9	-355.0	2,032.1	0.00	0.00	0.00

Database:	EDM den0-adp01 Server Data	Local Co-ordinate Reference:	Well BEDDO P25-32D
Company:	NOBLE ENERGY INC WELD COUNTY CO	TVD Reference:	WELL @ 4812.0ft (Original Well Elev)
Project:	SEC.25-T3N-R67W	MD Reference:	WELL @ 4812.0ft (Original Well Elev)
Site:	BEDDO P25-31D Sec.25-T3N-R67W	North Reference:	True
Well:	BEDDO P25-32D	Survey Calculation Method:	Minimum Curvature
Wellbore:	Wellbore #1		
Design:	Plan #1 (9-14-09)		

**Planned Survey**

Measured Depth (ft)	Inclination (°)	Azimuth (°)	Vertical Depth (ft)	+N/-S (ft)	+E/-W (ft)	Vertical Section (ft)	Dogleg Rate (°/100ft)	Build Rate (°/100ft)	Turn Rate (°/100ft)
8,200.0	0.00	0.00	7,793.4	-2,000.9	-355.0	2,032.1	0.00	0.00	0.00
8,240.0	0.00	0.00	7,833.4	-2,000.9	-355.0	2,032.1	0.00	0.00	0.00
8,280.0	0.00	0.00	7,873.4	-2,000.9	-355.0	2,032.1	0.00	0.00	0.00
8,298.6	0.00	0.00	7,892.0	-2,000.9	-355.0	2,032.1	0.00	0.00	0.00

**HARDLINES 78'S & 75'W OF BHL**

**Targets**

Target Name	Dip Angle (°)	Dip Dir. (°)	TVD (ft)	+N/-S (ft)	+E/-W (ft)	Northing (ft)	Easting (ft)	Latitude	Longitude
- hit/miss target									
- Shape									
TARGET BHL 2585'F	0.00	0.00	6,100.0	-2,000.9	-355.0	1,315,047.93	3,182,012.24	40° 11' 46.923 N	104° 50' 54.350 W
- plan hits target center									
- Point									
HARDLINES 78'S & 7	0.00	0.00	7,892.0	-2,078.9	-430.0	1,314,969.36	3,181,937.79	40° 11' 46.152 N	104° 50' 55.317 W
- plan misses target center by 108.2ft at 8298.6ft MD (7892.0 TVD, -2000.9 N, -355.0 E)									
- Polygon									
Point 1			7,892.0	0.0	0.0	1,314,969.36	3,181,937.79		
Point 2			7,892.0	0.0	200.0	1,314,970.83	3,182,137.78		
Point 3			7,892.0	0.0	0.0	1,314,969.36	3,181,937.79		
Point 4			7,892.0	200.0	0.0	1,315,169.35	3,181,936.32		

**Formations**

Measured Depth (ft)	Vertical Depth (ft)	Name	Lithology	Dip (°)	Dip Direction (°)
7,413.6	7,007.0	NIOBRARA		0.00	
7,703.6	7,297.0	CODELL		0.00	
8,148.6	7,742.0	J-SAND		0.00	